 <p style="text-align: center;">Council Communication Office of the City Manager</p>	Date: April 25, 2016
	Agenda Item No. 49 Roll Call No. <u>16-707</u> Communication No. <u>16-227</u> Submitted by: Pamela S. Cooksey, P.E., City Engineer

AGENDA HEADING:

Amending Chapter 114 of the Municipal Code Regarding Traffic Regulation Changes as follows:

- A. Revisions to the Municipal Code related to opening of East Martin Luther King Jr Parkway between SE 15th Street and SE 30th Street.
- B. Revisions to the Municipal Code related to the closure of Scott Avenue between SE 15th Court and SE 18th Street.
- C. Revisions to the Municipal Code related to the addition of streets in the Woods of Copper Creek Development.
- D. Extension of No Parking Restriction on 31st Street South of Ingersoll Avenue.
- E. Yield control for southbound Bradway Place at Harwood Drive.

SYNOPSIS:

Recommend approval of the staff recommendations, including first reading of the ordinance regarding the traffic regulation changes.

FISCAL IMPACT:

Amount: Minor costs for signing modifications.

Funding Source: 2016-17 Operating Budget, Page 78 Engineering Department Traffic and Transportation – Sign Installation and Maintenance, EG062080

ADDITIONAL INFORMATION:

- A. Construction of E Martin Luther King Jr Parkway between SE 15th Street and SE 30th Street is nearing completion. As part of the completion of this segment of roadway, there are a several traffic regulations that are required. These include designation of speed limits, traffic controls, through streets, truck routes, and parking regulations. Staff recommends the following Municipal Code modifications:

Traffic Control

Identify new traffic signals at the intersections of SE 18th Street/E Martin Luther King Jr Parkway, SE 23rd Street/ E Martin Luther King Jr Parkway, SE 25th Court/ E Martin Luther King Jr Parkway, and SE 30th Street/ E Martin Luther King Jr Parkway in the Municipal Code.

Sec. 114-1476.01. East Martin Luther King Jr Parkway.

East Martin Luther King Jr Parkway and Southeast Eighteenth Street, traffic control signal.
East Martin Luther King Jr Parkway and Southeast Twenty-third Street, traffic control signal.
East Martin Luther King Jr Parkway and Southeast Twenty-fifth Court, traffic control signal.
East Martin Luther King Jr Parkway and Southeast Thirtieth Street, traffic control signal.

Speed Limits

Designate the speed limit on E Martin Luther King Jr Parkway as 35 mph. This is consistent with the speed limit on the existing portion of E Martin Luther King Jr Parkway between Fleur Drive and SE 15th Street. Make corrections to define the new limits of Maury Street.

Sec. 114-1335.01. East Martin Luther King Jr Parkway.

East Martin Luther King Jr Parkway, from the center of Des Moines River to Southeast ~~Fifteenth~~ Thirtieth Street, 35 miles per hour.

Sec. 114-1336. Maury Street.

Maury Street, from Southeast Twenty-fourth Street to Southeast ~~Thirtieth~~ Twenty-eighth Street, 30 miles per hour.

Snow Routes, Through Streets, and Truck Routes

- Designate E Martin Luther King Jr Parkway and SE 18th Street as a snow routes, truck routes, and through streets. Make corrections to define the new limits of Maury Street.
- Designate SE 23rd Street and SE 25th Court as through streets between E Martin Luther King Jr Parkway and Maury Street.

Sec. 114-1712.02. East Martin Luther King Jr Parkway.

East Martin Luther King Jr Parkway, from the center of Des Moines River to Southeast ~~Fifteenth~~ Thirtieth Street.

Sec. 114-1713. Maury Street.

Maury Street, from Southeast Sixth Street to Southeast ~~Thirtieth~~ Twenty-eighth Street.

Sec. 114-2024.5. Southeast Twenty-fifth Court.

Southeast Twenty-fifth Court, from the south line of East Martin Luther King Jr Parkway to the north line of Maury Street, stop.

Sec. 114-2280.01. East Martin Luther King Jr Parkway.

East Martin Luther King Jr Parkway, from the center of Des Moines River to the east line of Southeast ~~Fifteenth~~ Thirtieth Street, stop.

Sec. 114-2280.01. East Martin Luther King Jr Parkway.

East Martin Luther King Jr Parkway, from the center of Des Moines River to the east line of Southeast ~~Fifteenth~~ Thirtieth Street, stop.

Sec. 114-2282. Maury Street.

Maury Street, from the east line of Southeast Sixth Street to the ~~west~~ east line of Southeast ~~Thirtieth~~ Twenty-eighth Street, stop.

Sec. 114-2479.05 Southeast Twenty-third Street.

Southeast Twenty-third Street, from Maury Street to East Martin Luther King Jr. Parkway.

Sec. 114-2528.01. East Martin Luther King Jr Parkway.

East Martin Luther King Jr Parkway, from the center of Des Moines River to the east line of Southeast ~~Fifteenth~~ Thirtieth Street, stop.

Sec. 114-2529. Maury Street.

Maury Street, from Southeast Sixth Street to Southeast ~~Thirtieth~~ Twenty-third Street.

Parking Restrictions

Prohibit parking on E Martin Luther King Jr Parkway and on sections of intersecting streets. Make corrections to define the new limits of Maury Street.

Sec. 114-2800. Southeast Twentieth Street--East ~~Market Street~~ Caulder Avenue to Evergreen Avenue.

~~Southeast Twentieth Street, on the east side, from East Market Street to Scott Avenue, no parking any time.~~

Sec. 114-2813. Southeast Twenty-third Court--Scott Avenue to East Philip Street.

Southeast Twenty-third Court, on the east side, from ~~Scott Avenue~~ the dead end north of Shaw Street to Maury Street, no parking any time.

Sec. 114-2817. Southeast Twenty-third Street--~~Scott Avenue~~ East Martin Luther King Jr Parkway to East Southdale Drive.

Southeast Twenty-third Street, on ~~the east both~~ sides, from ~~Scott Avenue~~ East Martin Luther King Jr Parkway to Maury Street, no parking any time.

Sec. 114-2825. Southeast Twenty-fourth Street--~~Scott Avenue~~ Shaw Street to East Payton Avenue.

Southeast Twenty-fourth Street, on the east side, from ~~Scott Avenue~~ Shaw Street to Maury Street, no parking any time.

Sec. 114-2828. Southeast Twenty-fifth Court--East Market Street to C.B. & Q.

Southeast Twenty-fifth Court, on both sides, from Scott Avenue to Maury Street, no parking any time.

Sec. 114-2843. Southeast Twenty-seventh Court--East Market Street to East Leach Avenue.

Southeast Twenty-seventh Court, on the west side, from East Market Street to the dead end south of Scott Avenue and including the turnaround ~~C.B. & Q. Street~~, no parking any time.

Southeast Twenty-seventh Court, on the east side, from a point 665 feet south of Scott Avenue to the dead end south of Scott Avenue, no parking any time.

Southeast Twenty-seventh Court, on the west side, from the dead end north of Maury Street to Railroad Avenue, no parking any time.

Southeast Twenty-seventh Court, on the east side, from a point 345 feet north of Maury Street to the dead end north of Maury Street and including the turnaround, no parking any time.

Sec. 114-2846. Southeast Twenty-seventh Street--East Market Street to East Pine Avenue.

Southeast Twenty-seventh Street, on the west side, from a ~~point 600 feet~~ the dead end north of Maury Street to East Railroad Avenue, no parking any time.

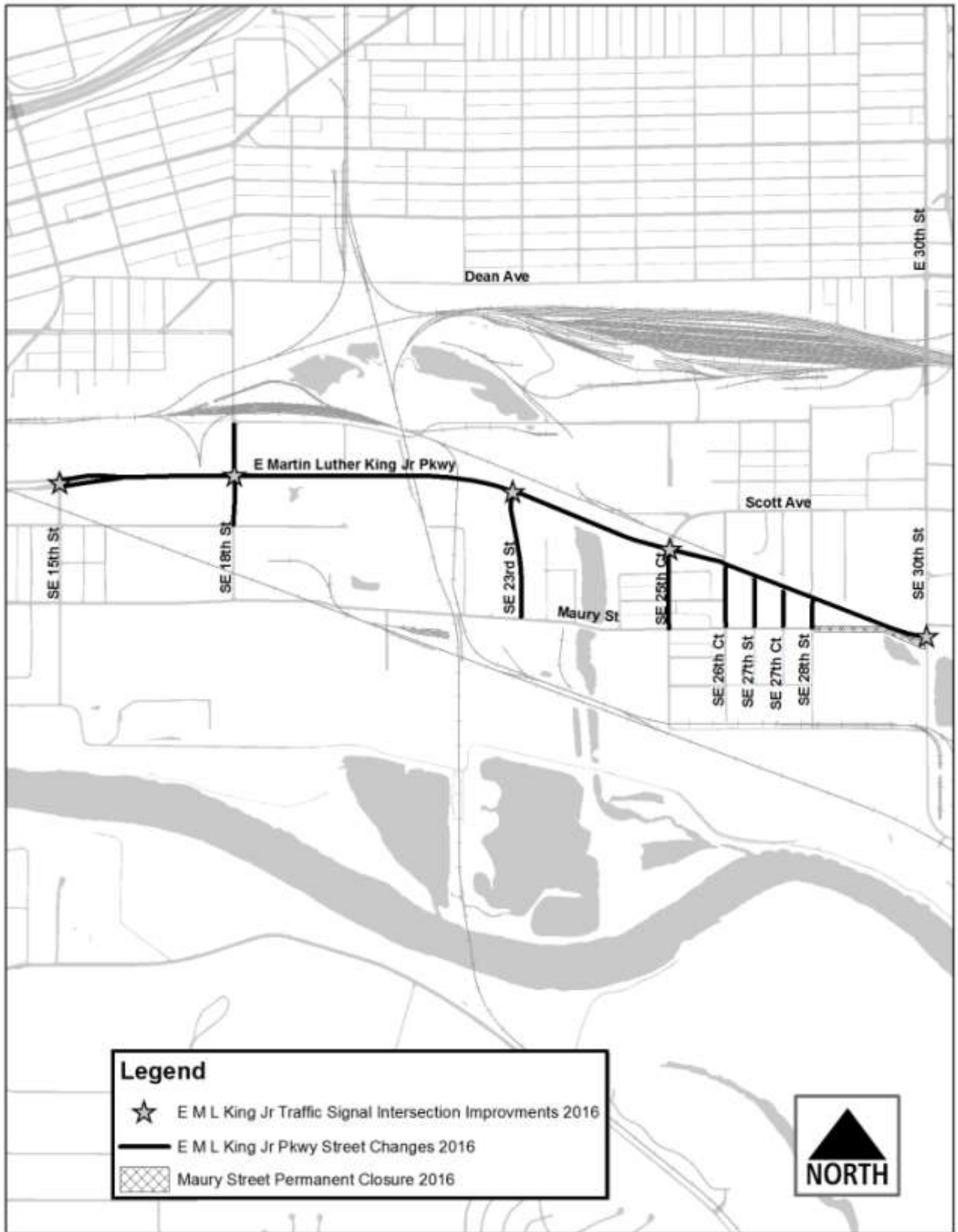
Southeast Twenty-seventh Street, on the east side, from a point 470 feet north of Maury Street to the dead end north of Maury Street and including the turnaround, no parking any time.

Sec. 114-3469.06. East Martin Luther King Jr Parkway—Center of Des Moines River to East City Limits.

East Martin Luther King Jr Parkway, on both sides, from the center of Des Moines River to Southeast ~~Fifteenth~~ Thirtieth Street, no parking any time.

Sec. 114-3481. Maury Street--Southeast Fifth Street to Southeast Thirty-second Street.

Maury Street, on both sides, from Southeast Eighteenth Street to Southeast ~~Thirtieth~~ Twenty-eighth Street, no parking any time.



- B. As part of the SE Connector project, the agreement with Burlington Northern Santa Fe Railway (Roll Call No. 12-1912) requires the closure of Scott Avenue at the railroad tracks east of SE 15th Court when E Martin Luther King Jr Parkway opens. Staff recommends the following Code modifications to update the Municipal Code to reflect this closure of Scott Avenue and the opening of E Martin Luther King Jr Parkway:

Sec. 114-2996. Astor Street--Maury Street to Dean Avenue.

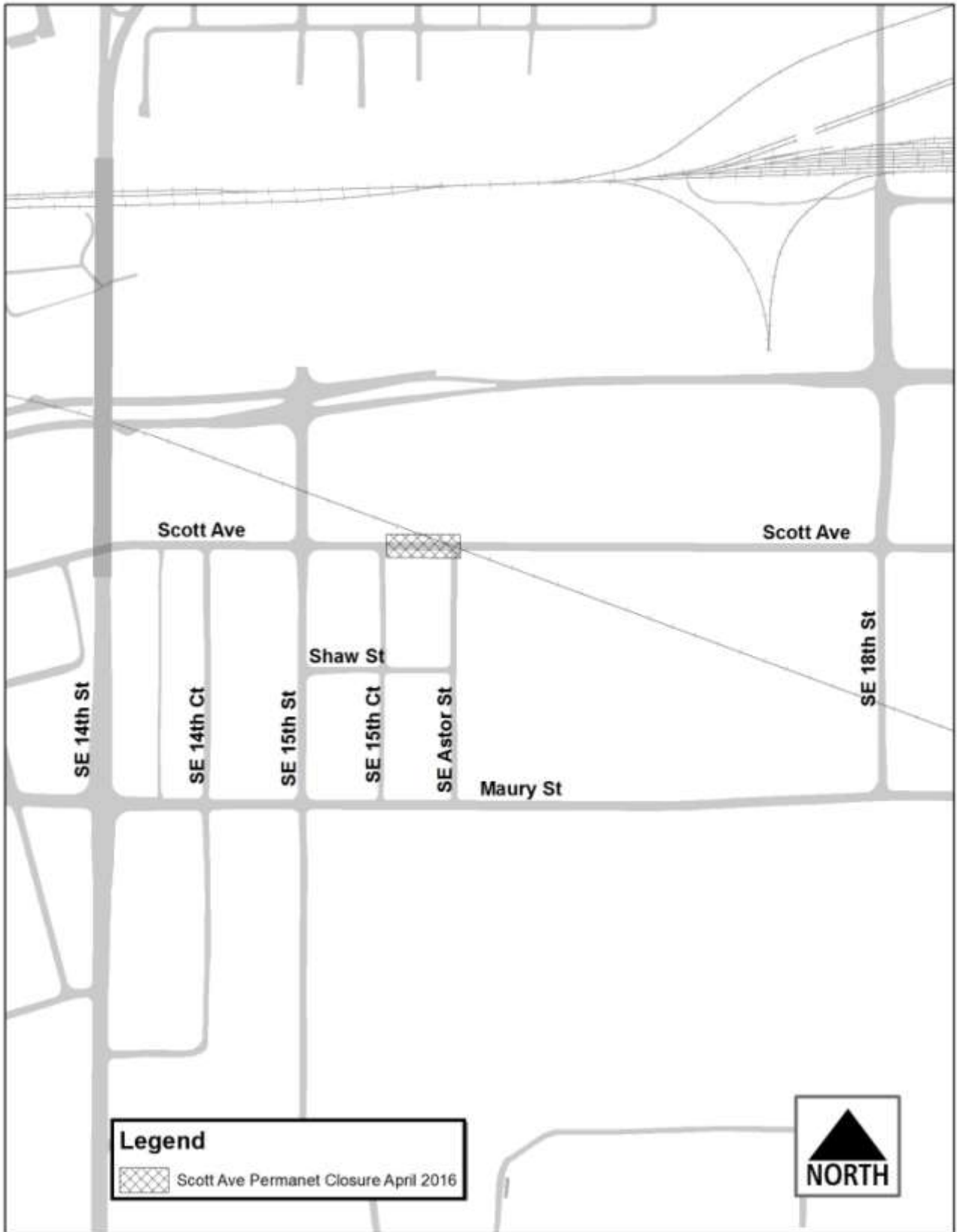
Astor Street, on the east side, from ~~Raccoon Street~~ Scott Avenue to Maury Street, no parking any time.

Sec. 114-3625. Scott Avenue--Southeast First Street to east city limits.

Scott Avenue, on the south side, from Southeast Fifteenth Street to Southeast ~~Twenty-fifth Court~~ Fifteenth Court, no parking any time.

Scott Avenue, on the north side, from the dead end west of Southeast Eighteenth Street ~~Southeast Sixteenth Court~~ to the dead end east of Southeast Eighteenth Street ~~Southeast Nineteenth Street~~, no parking any time.

Scott Avenue, on the north side, from Southeast Twenty-fifth Court to Southeast Twenty-seventh Street, no parking any time.



- C. The proposed code changes are necessary to restrict parking on one (1) side of the street on recently constructed sections of Wisconsin Avenue and E 48th Street to meet the requirements outlined in the City’s parking restriction policy. Staff recommends to following Municipal Code modifications to implement these changes:

Sec. 114-2936.5. East Forty-eighth Street--~~East Valdez Drive~~ Wisconsin Avenue to north city limits.

East Forty-eighth Street, on the west side, from Wisconsin Avenue to the dead end north and including any part of the cul-de-sac, no parking any time.

Sec. 114-3785. Wisconsin Avenue--North Union Street to ~~East Twenty-ninth Street~~ dead end east of East Forty-eighth Street.

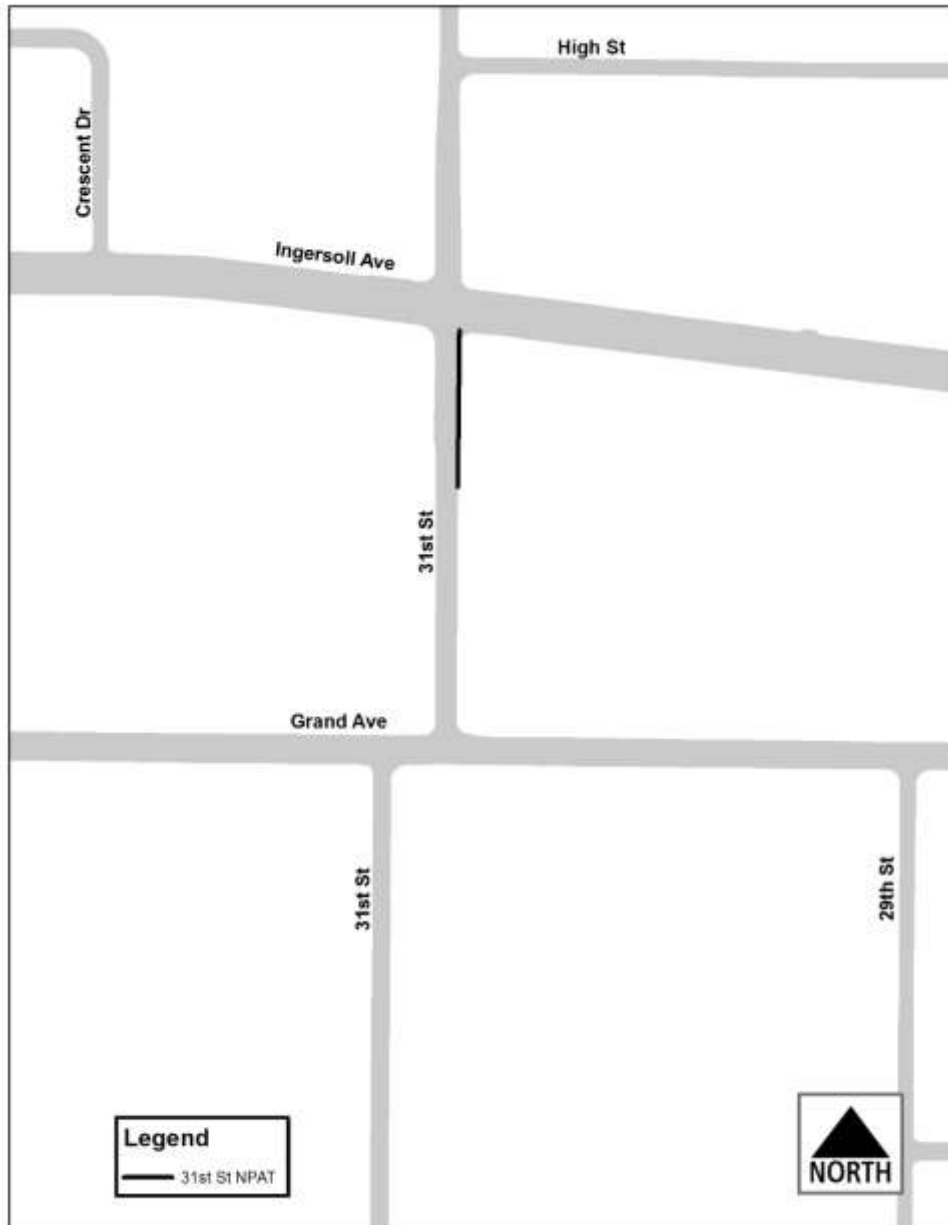
Wisconsin Avenue, on the north side, from the dead end west of East Forty-seventh Street and including any part of the cul-de-sac to the dead end east of East Forty-eighth Street and including any part of the cul-de-sac, no parking any time.



- D. Concerns were raised by residents regarding traffic on 31st Street south of Ingersoll Avenue. Currently there is no parking allowed on the east side of 31st Street for 190 feet south of Ingersoll Avenue. Traffic patterns have changed for 31st Street in this area with the striping changes on Ingersoll and the addition of a freeway interchange for I-235 on 31st Street. The changes in traffic patterns have created a need for increased maneuvering distance on approach to Ingersoll Avenue at northbound 31st Street. To make this change, the existing No Parking Any Time area will be increased from 190 feet south of Ingersoll Avenue to 220 feet south of Ingersoll Avenue.

Sec. 114-2868. Thirty-first Street--John Lynde Road to dead end north of Lincoln Avenue.

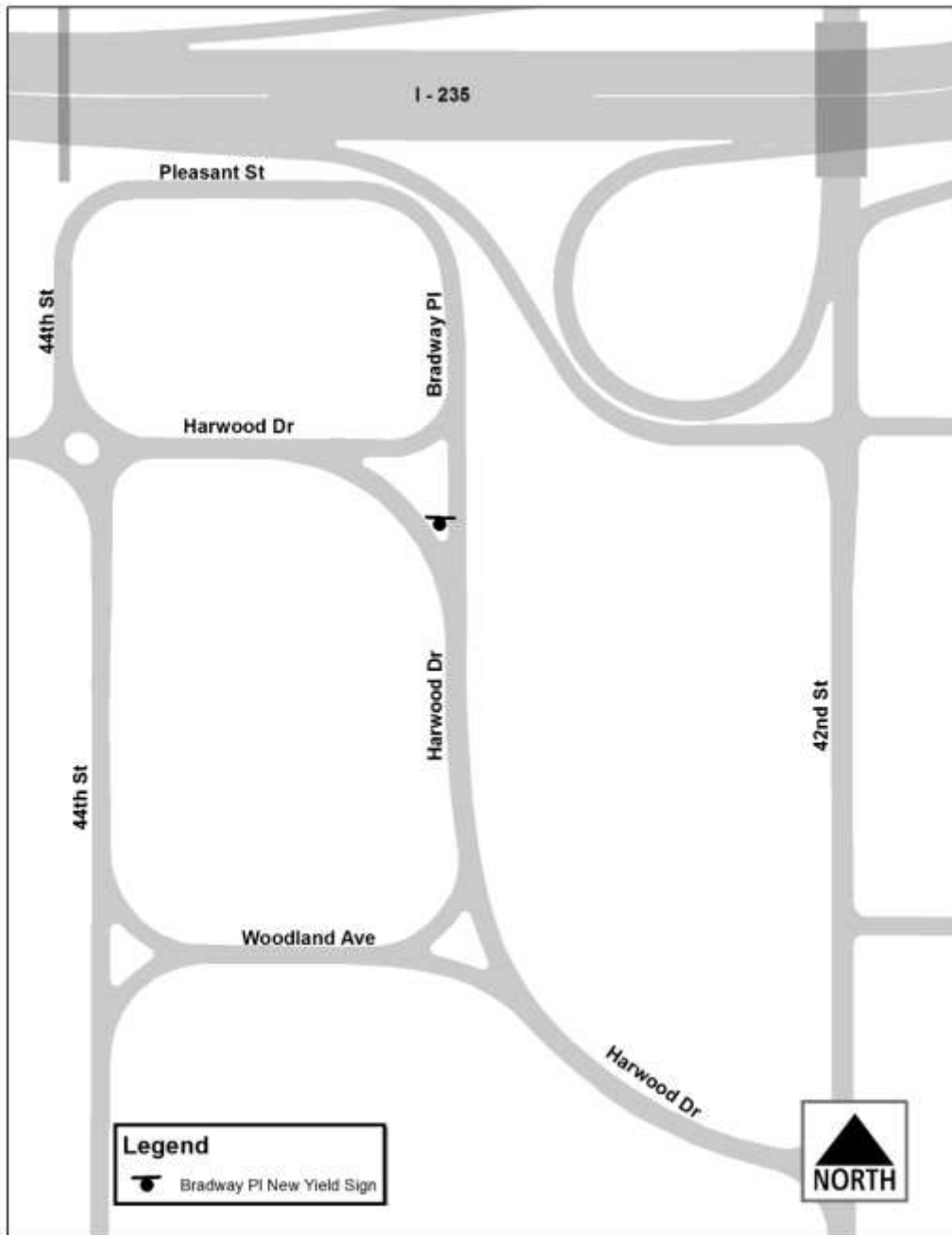
Thirty-first Street, on the east side, from Ingersoll Avenue to a point ~~190~~ 220 feet south thereof, no parking any time.



- E. Yield control for southbound Bradway Place at Harwood Drive is being added in response to a request to communicate which direction of travel has the right-of-way at the intersection.

Sec. 114-2227. Harwood Drive.

Harwood Drive, at Bradway Place, yield.



PREVIOUS COUNCIL ACTION(S):

Date: June 10, 2013

Roll Call Number: [13-0948http://www.dmgov.org/government/citycouncil/rollcalls/2013/13-0606.pdf](http://www.dmgov.org/government/citycouncil/rollcalls/2013/13-0606.pdf)

Action: [On](#) SE Connector Paving – SE 15th Street to SE 30th Street: Resolution approving plans, specifications, form of contract documents, engineer’s estimate and designating lowest responsible bidder as C. J. Moyna & Sons, Inc., (John P. Moyna, President), \$31,166,419.37. ([Council Communication No. 13-280](#)) Moved by Meyer to adopt. Motion Carried 7-0.

BOARD/COMMISSION ACTION(S): NONE

ANTICIPATED ACTIONS AND FUTURE COMMITMENTS: NONE

For more information on this and other agenda items, please call the City Clerk’s Office at 515-283-4209 or visit the Clerk’s Office on the first floor of City Hall, 400 Robert D. Ray Drive. Council agendas are available to the public at the City Clerk’s Office on Thursday afternoon preceding Monday’s Council meeting. Citizens can also request to receive meeting notices and agendas by email by calling the Clerk’s Office or sending their request via email to cityclerk@dmgov.org.