


COUNCIL COMMUNICATION

	Number: 19-324	Meeting: July 15, 2019
	Agenda Item: 47	Roll Call: 19-1120
	Submitted by: Benjamin R. Page, Park and Recreation Director	

AGENDA HEADING:

Approving amendment to donation, construction, and maintenance agreement between the City of Des Moines and the Central Iowa Trail Association (CITA) for a new advanced loop (mountain bike trail) in Ewing Park.

SYNOPSIS:

Recommend approval amendment to the agreement with CITA to fund, construct, and maintain a new advanced loop in Ewing Park.

FISCAL IMPACT:

Amount: \$15,000 (donation)

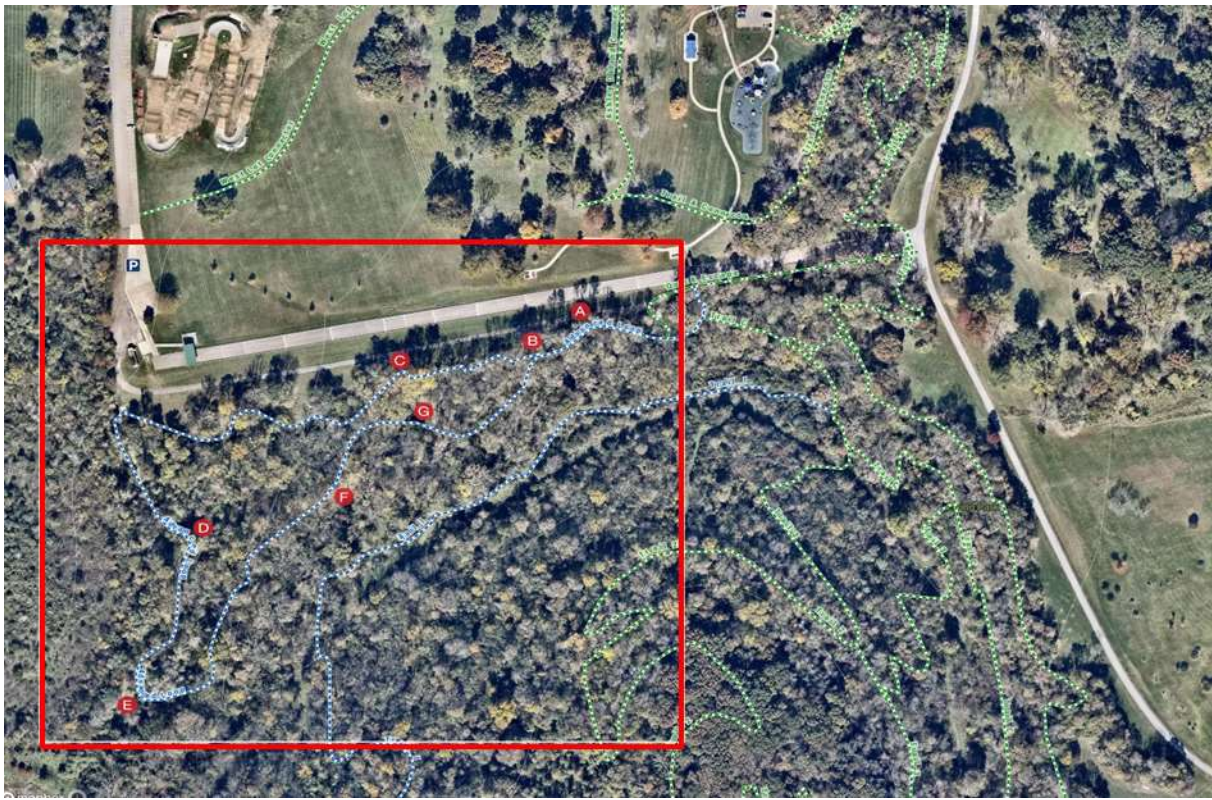
Funding Source: CITA is responsible for all costs associated with the construction and maintenance of the advanced loop. No City funds will be used.

ADDITIONAL INFORMATION:

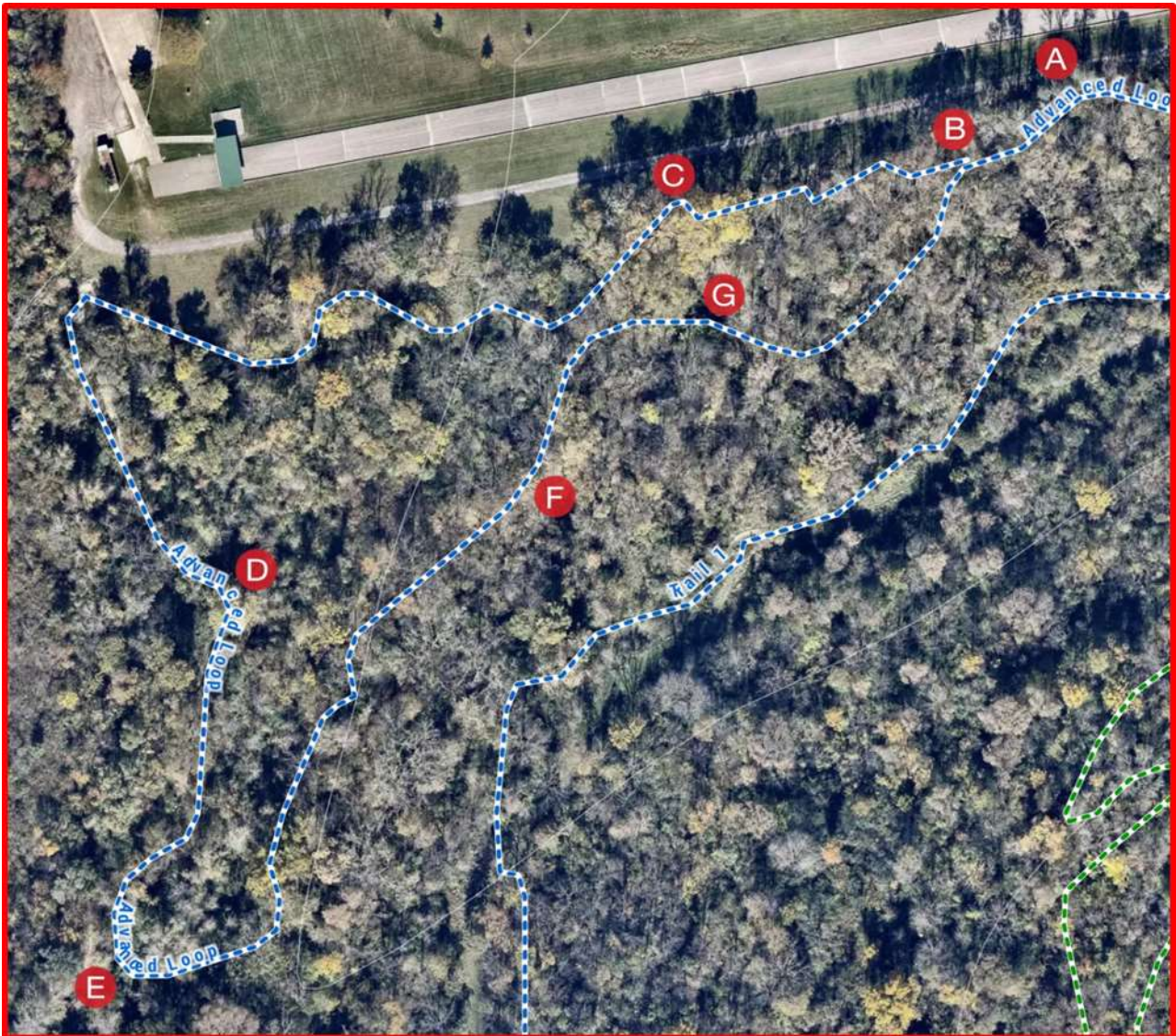
- The insurance and indemnification requirements in Attachment 1 in the donation, construction and maintenance agreement have been revised to bring the coverage requirements more in line with the City's standard minor requirements. These changes include:
 1. The requirement to include the City as an additional insured on the Contractor's insurance was removed.
 2. Reference to auto liability insurance requirement was removed.
- CITA is a 501 (c) (3) non-profit organization and a local chapter of the International Mountain Biking Association (IMBA) that promotes multi-model off-road trail use including mountain biking, running, and hiking. Over the past several years CITA has provided countless volunteer hours assisting the City with the maintenance of nature trails in Ashworth, Greenwood, and Ewing Parks.

- As the sport of mountain biking has evolved over the past decades, it has driven the development of a new style of trail with features and concepts that push the limits of traditional 18-24-inches wide single-track dirt trail. An increasing number of public land agencies, ski areas and communities now embrace the importance of more advanced trails built specifically for mountain bikes.
- Advanced Trails take mountain bikers on a terrain-induced roller coaster experience, with little pedaling and braking necessary. This style of trail typically contains features like banked turns, rolling terrain, and inconsistent and unpredictable surfaces.
- CITA has approached the Park and Recreation Department with proposal to build an advanced loop in Ewing Park. If approved, the new advanced loop would upgrade an existing portion of the mountain bike trail in Ewing Park that is directly south of the Soapbox Derby track.

Advanced Loop Location in Ewing Park



Advanced Loop Map

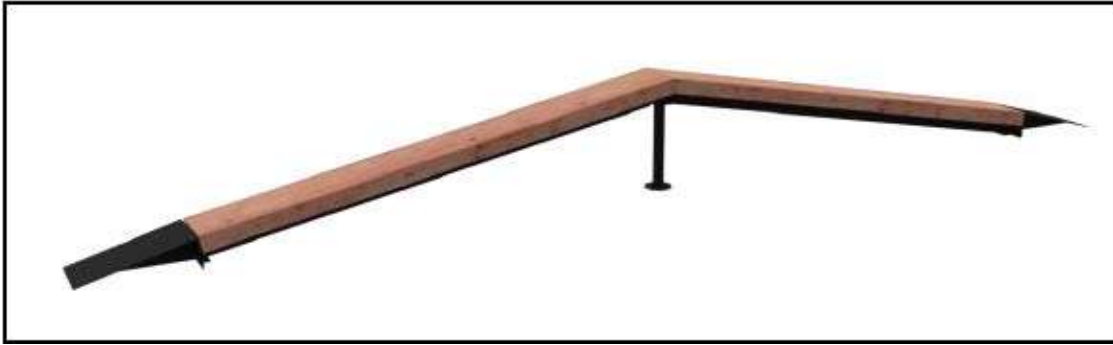


A. Elevated bridge

B. Directional signage



C. "Skinny" a narrow balance-beam



D. Wooden berm for high speed cornering



E. Flagstone rock corner



F. Double roller with drop off



PREVIOUS COUNCIL ACTION(S):

Date: April 22, 2019

Roll Call Number: [19-0650](#)

Action: [Donation](#), Construction and Maintenance Agreement with Central Iowa Trail Association, Inc. regarding Advanced Loop Mountain Bike Trail in Ewing Park. ([Council Communication No. 19-169](#)) Moved by Gatto to adopt. Motion Carried 7-0.

BOARD/COMMISSION ACTION(S): NONE

ANTICIPATED ACTIONS AND FUTURE COMMITMENTS:

Normal Council actions for implementation and acceptance of the project.

For more information on this and other agenda items, please call the City Clerk's Office at 515-283-4209 or visit the Clerk's Office on the first floor of City Hall, 400 Robert D Ray Drive. Council agendas are available to the public at the City Clerk's Office on Thursday afternoon preceding Monday's Council meeting. Citizens can also request to receive meeting notices and agendas by email by calling the Clerk's Office or sending their request via email to cityclerk@dmgov.org.