


COUNCIL COMMUNICATION

	Number:	22-303	Meeting:	June 27, 2022
	Agenda Item:	80	Roll Call:	22-303
	Submitted by:	Steven L. Naber, P.E., City Engineer		

AGENDA HEADING:

Amending Chapter 114 of the Municipal Code regarding Traffic Regulation changes as follows:

- A. Parking Restriction—Restrict parking on both sides of Hartford Avenue from SE 22nd Street to Cownie Soccer Park Driveway.
- B. Parking Restriction—Restrict parking on both sides of Easton Boulevard from E University Avenue to Wayne Street.
- C. Parking Restriction—Restrict parking on the south side of Urbandale Avenue from Beaver Avenue to 41st Place.
- D. Speed Limit Change—Reduction of the speed limit on Easton Boulevard from Hubbell Avenue to the east City limits.

SYNOPSIS:

Recommend approval of the staff recommendation and the ordinance regarding the traffic regulation changes.

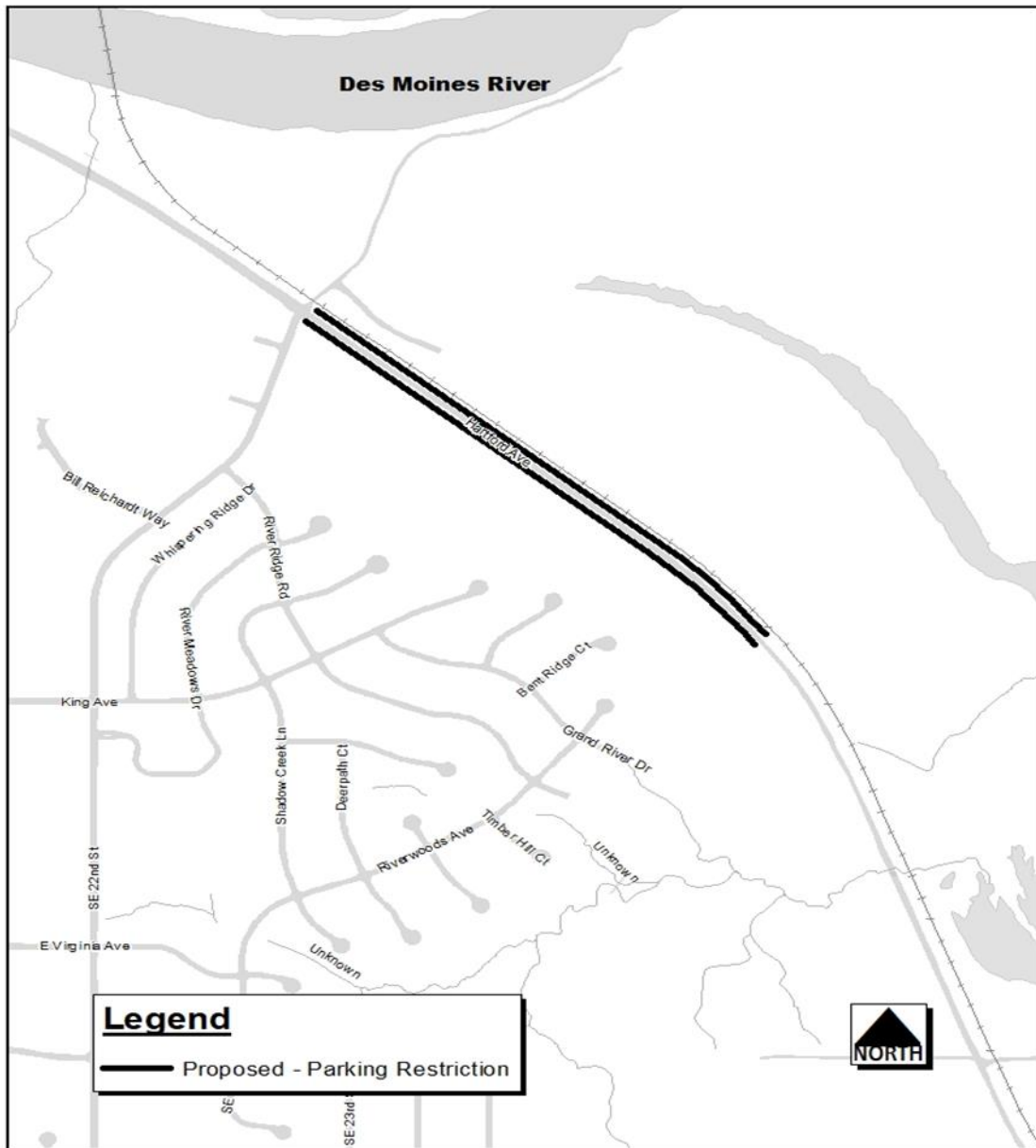
FISCAL IMPACT:

Amount: Costs for sign installations and period maintenance of signs.

Funding Source: 2022-23 Operating Budget, Page 61, Engineering Department, T&T – Sign, Painting, Signal and Lighting, EG062080, Road Use Tax Fund.

ADDITIONAL INFORMATION:

- A. The Park and Recreation Department requested parking be restricted on Hartford Avenue from SE 22nd Street to 300 feet east of the Cownie Soccer Complex’s driveway. Hartford Avenue is a rural cross-section in this area with no curb or shoulder. Vehicles parking on the roadway impede traffic flow. Pedestrians crossing Hartford Avenue from vehicles parking on-street are also crossing the railroad tracks to access the soccer complex creating an unsafe situation. The proposed changes to the code will add the parking restriction east of SE 22nd Street and correct an error in the code for the west boundary of the existing restriction. The following revisions to the Municipal Code are necessary to place this change into effect.



Sec. 114-3292. Hartford Avenue--South Union Street to East Watrous Avenue.

Hartford Avenue, on the north side, from a point 230 feet west of Southeast Fourteenth Street to a point 50 feet east of Southeast Fourteenth Street, no parking any time.

~~Hartford Avenue, on the north side, from Southeast Fourteenth Street to a point 50 feet east thereof, no parking any time.~~

~~Hartford Avenue, on the south side, from Southeast Fourteenth Street to a point 50 feet east thereof, no parking any time.~~

Hartford Avenue, on both sides, from Southeast ~~Eighteenth~~ Fourteenth Street to 2700 feet east of Southeast Twenty-second Street, no parking any time.

B. Councilmember Westergaard requested that staff prepare code modifications to restrict parking on the south side of Easton Boulevard from E. University Avenue to Wayne Street. Based on

the width of the street, parking is permitted per the City’s Parking Restriction Policy. As part of the field review for Councilmember Westergaard’s request, City staff reviewed the intersections with Easton Boulevard between E. University Avenue and E. Wayne Street for vision clearance and sight distance. Based on the speed limit, roadway type, intersection skew and sight distance requirements, parking should be prohibited on the north side of Easton Boulevard from E. University Avenue to Wayne Street. It was also discovered during the field review that the parking restrictions on both sides of Easton Boulevard between E. 20th Street and E. 22nd Street do not match field conditions. The proposed changes to the code will restrict the parking on the south side of Easton Boulevard per Councilmember Westergaard’s request and on the north side of Easton Boulevard to meet sight distance requirements. Existing errors in the code will also be corrected. The following revisions to the Municipal Code are necessary to place these changes into effect.



Sec. 114-3168. Easton Boulevard--East University Avenue to east city limits.

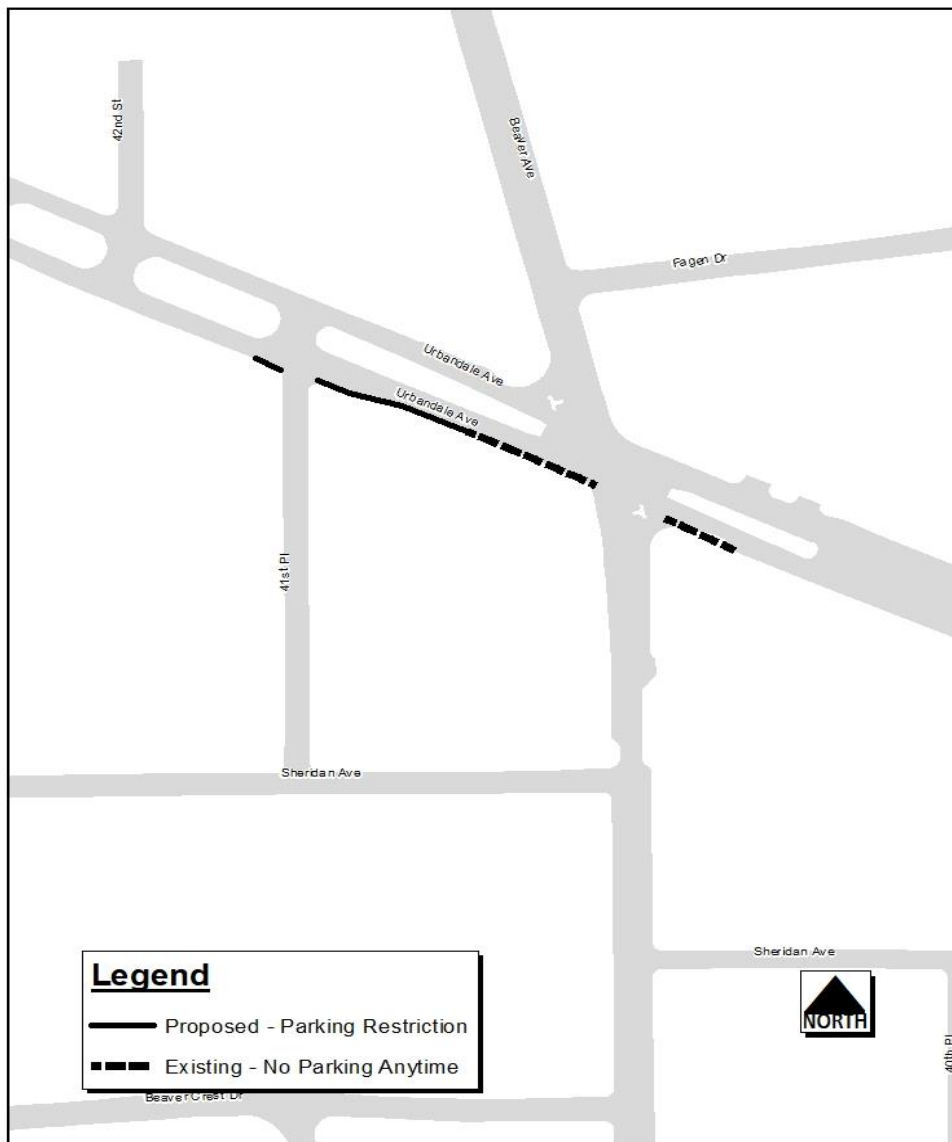
~~Easton Boulevard, on the south both sides, from East University Avenue to a point 100 feet east thereof East Twenty-second Street, no parking any time.~~

~~Easton Boulevard, on both sides, from Dixon Avenue to a point 100 feet east of Stewart Street, no parking any time.~~

~~Easton Boulevard, on the north side, from East Nineteenth Street to a point 75 feet west thereof, no parking any time.~~

~~Easton Boulevard, from 100 feet west of Delaware Avenue/East Twenty-first Street to East Twenty-second Street, no parking any time.~~

- C. The curb line on the south side of Urbandale Avenue between Beaver Avenue and Forty-fourth Street was modified as part of the redevelopment in the southwest corner of Beaver Avenue and Urbandale Avenue, reducing the pavement width. The proposed code changes extend the existing parking restriction on the south side of Beaver Avenue to address the new curb line and add a corner clearance west of Forty-first Place to improve visibility. The following revisions to the Municipal Code are necessary to place this change into effect.

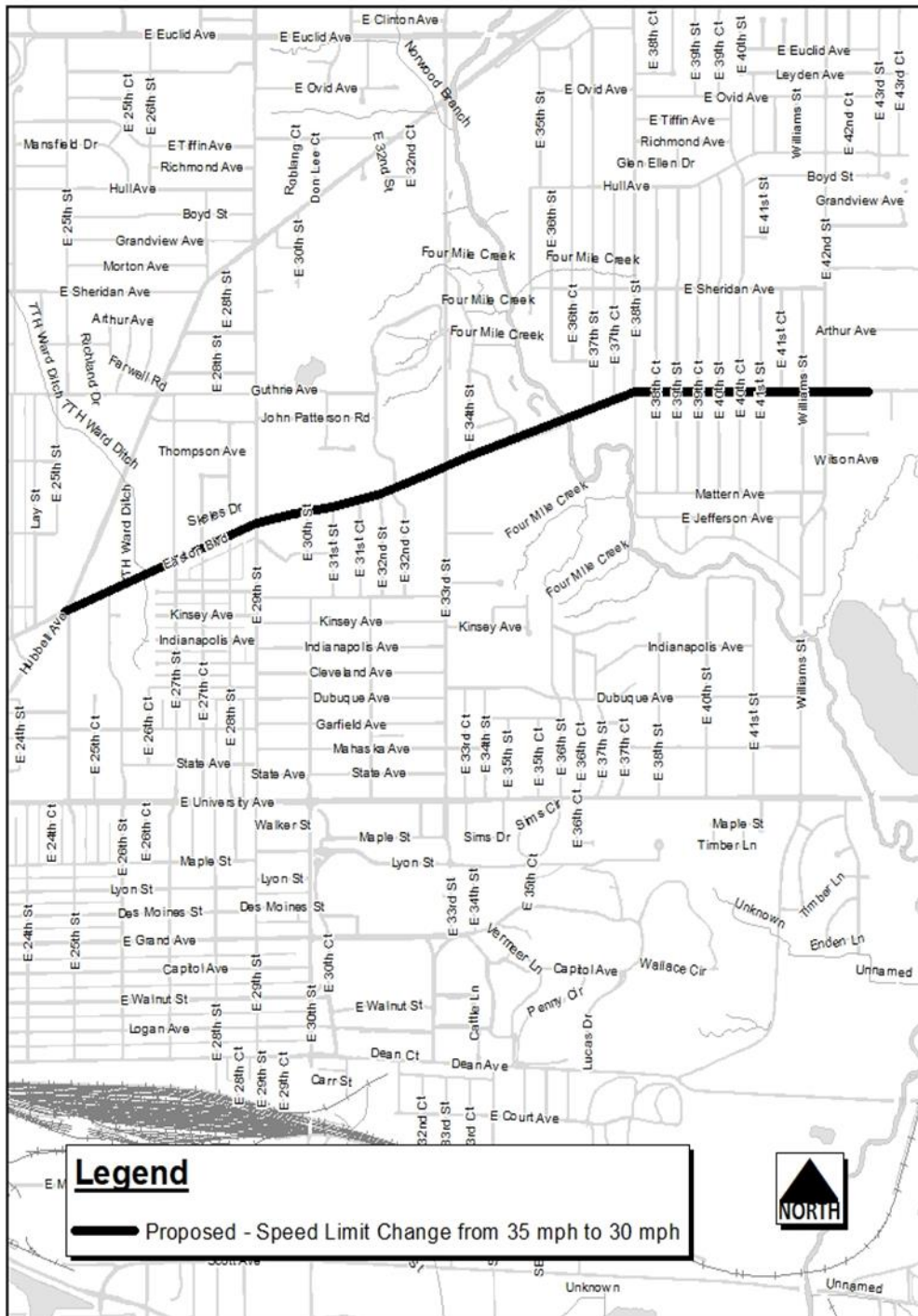


Sec. 114-3697. Urbandale Avenue--Martin Luther King Jr Parkway to Forty-fourth Street.

~~Urbandale Avenue, on the south side, from Beaver Avenue to a point 85 feet east thereof, no parking any time.~~

Urbandale Avenue, on the south side, from a point 85 feet east of Beaver Avenue to a point ~~13050~~ feet west of Forty-first Place thereof, no parking any time.

- D. In 2019, the City hired a consultant to perform a traffic study along Easton Boulevard from E University Avenue to the east City limits. At that time, speed limits were evaluated, and it was not recommended to change the current 35 mph speed limit between Hubbell Avenue and the east City limits. However, the study did recommend converting Easton Boulevard between Hubbell Avenue and E. 29th Street from a two-lane roadway with wide lanes to a three-lane cross-section. Those geometric changes were completed in the fall of 2020. When geometric changes are made that could impact speeds, before and after data is typically collected. Speed data was collected in 2021, approximately one (1) year after the changes were implemented. Speed data showed that the 85th percentile speed had reduced by two (2) mph and the average speed had reduced by three (3) mph. As a result of these changes, speed limit analysis was performed, using the City's current process, for the entire corridor from Hubbell Avenue to the east City limits. The analysis indicated that the credible speed limit for the corridor is 30 mph. The proposed code change will reduce the speed limit on Easton Boulevard from Hubbell Avenue to the east City limits from 35 mph to 30 mph. The following revision to the Municipal Code is necessary to place this change into effect.



Sec. 114-1312. Easton Boulevard.

Easton Boulevard, from East University Avenue to the east city limits East Twenty-fifth Street, 30 miles per hour.

~~Easton Boulevard, from East Twenty-fifth Street to the east city limits, 35 miles per hour.~~

PREVIOUS COUNCIL ACTION(S): NONE

BOARD/COMMISSION ACTION(S): NONE

ANTICIPATED ACTIONS AND FUTURE COMMITMENTS: NONE

For more information on this and other agenda items, please call the City Clerk's Office at 515-283-4209 or visit the Clerk's Office on the first floor of City Hall, 400 Robert D Ray Drive. Council agendas are available to the public at the City Clerk's Office on Thursday afternoon preceding Monday's Council meeting. Citizens can also request to receive meeting notices and agendas by email by calling the Clerk's Office or sending their request via email to cityclerk@dmgov.org.