


COUNCIL COMMUNICATION

 CITY OF DES MOINES OFFICE OF THE CITY MANAGER	Number:	25-091	Meeting:	March 10, 2025
	Agenda Item:	8	Roll Call:	25-0332
	Submitted by:	Steven L. Naber, P.E., City Engineer		

AGENDA HEADING:

Approving Supplemental Agreement No. 1 to the Professional Services Agreement (PSA) with Stantec Consulting Services, Inc. for construction administration services for realignment of the Phase G Southeast Des Moines Levee that is being constructed as a part of the Southeast Connector roadway project for Des Moines Levee Alterations – Phases F, G & H, for an amount not to exceed \$120,460.

SYNOPSIS:

Recommend approval of Supplemental Agreement No. 1 to the PSA with Stantec Consulting Services, Inc. (Gordon A. Johnston, President; 10220 103 Avenue NW, Suite 400, Edmonton, AB, Canada T5J 0K4), for an additional amount not to exceed \$120,460, based on hourly labor rates and reimbursable costs, to provide construction administration services for realignment of the Phase G Southeast Des Moines Levee that is being constructed as part of the Southeast Connector roadway project from S.E. 30th Street to Highway 65.

FISCAL IMPACT:

Amount: \$120,460

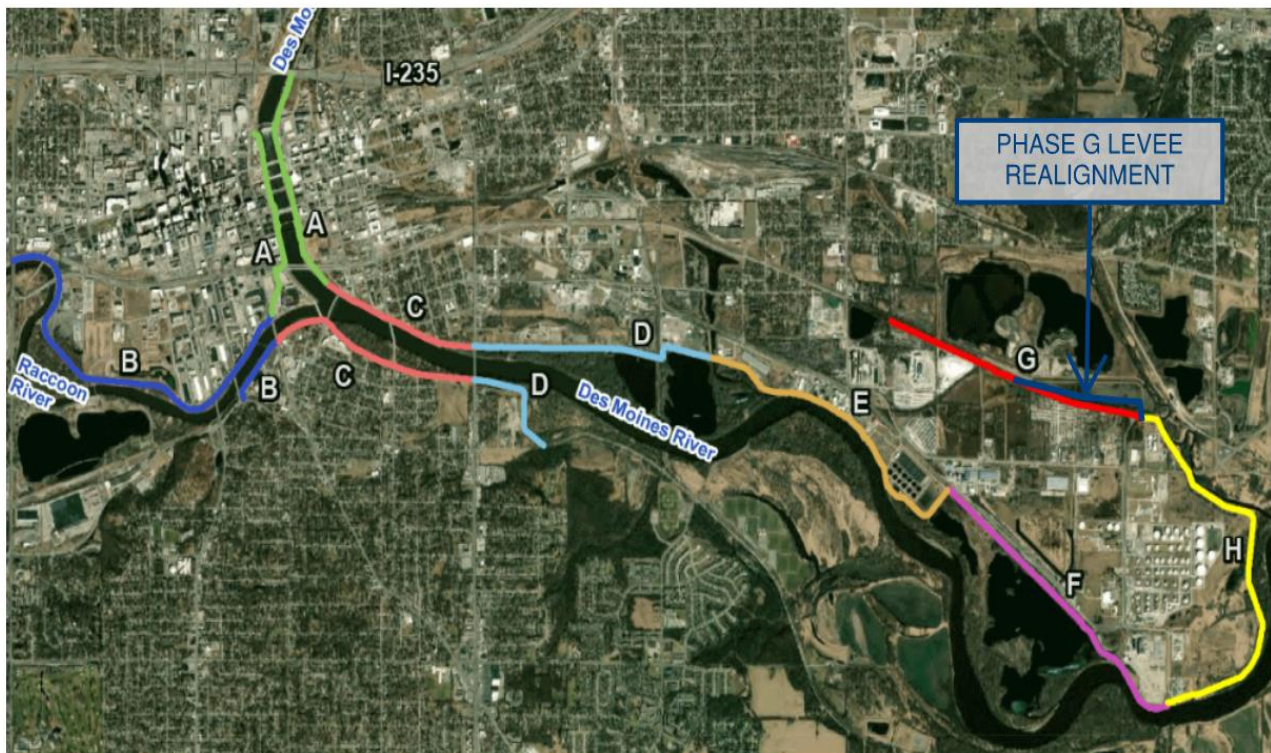
Funding Source: Fiscal Year (FY) 2024-2025 Capital Improvement Program (CIP), Page 93, Flood Mitigation Improvements, SM087, Being: Sales Tax Increment Fund and Storm Water Utility Fund

ADDITIONAL INFORMATION:

- Following the 2008 Midwest flood, the United States Army Corps of Engineers (USACE) conducted the Des Moines River Regulated Flow Frequency Study (DMRRFFS) to estimate the frequency and magnitude of future reservoir outflows and downstream river flows. Completed in November 2010 and released in January 2011, the results of the DMRRFFS showed flood flow frequencies have increased over previous USACE estimates and floods like the 1993 and 2008 events are more likely to occur than previously estimated. In addition to identifying the higher risk of flooding, the DMRRFFS showed that the existing levees in downtown Des Moines do not meet the standards for Federal Emergency Management Agency (FEMA) accreditation of levees provided in Title 44 of the Code of Federal Regulations (44 CFR) Section 65.10 of the National Flood Insurance Program regulations impacting FEMA flood hazard mapping.

- In March 2011, the City initiated professional services to begin responding to the USACE DMRRFFS by working through the USACE Section 408 requirements to improve the levee system to satisfy FEMA accreditation requirements. The City has worked closely with the USACE Rock Island District staff to prepare a Section 408 Concept Submittal to improve the levee system to meet accreditation requirements with City and Iowa Flood Mitigation Program funding. The Section 408 Concept Submittal was submitted to the USACE in May 2017 for review and the City has received approval of the Section 408 Concept from USACE. Individual (detailed) Section 408 submittals will be required for individual projects.
- Phase 1 Analyses have been conducted and documented to identify deficiencies relative to 44 CFR 65.10 accreditation requirements. The City plans to address these deficiencies by implementing various projects along the levee systems. These projects include levee raises, modification of gatewell and closure structures, pump station modifications, installation of embankment protection, and embankment and foundation stability mitigating features such as cutoff trenches or seepage berms. In accordance with the Flood Mitigation Program Agreement (Roll Call No. 15-1094, June 22, 2015), the project completion date is December 31, 2024. As projects move forward, the terms of the agreement will be reconciled to match project schedules. The projects will be constructed in multiple phases, generally from upstream to downstream along the system and the phases are identified as Phases A thru H.
- Phases F, G & H incorporate the Southeast Des Moines levee system (SEDM), which is part of the Lake Red Rock Remedial Works and is hydraulically connected to the DM-I levee system. SEDM is an eight (8) mile levee system located along the Des Moines River starting just upstream of the Des Moines Metropolitan Wastewater Reclamation Facility to the confluence of Fourmile Creek, then runs along Fourmile Creek to about a quarter mile east of SE 30th Street. Phases F, G & H are maintained and operated by USACE.
- On May 10, 2021, by Roll Call No. 21-0676, City Council approved the PSA for Phases F, G & H with Stantec Consulting Services, Inc. for a total cost not to exceed \$3,665,100, based on hourly rates, to provide design phase services.
- The Southeast Connector roadway project from SE 30th Street to US 65 requires relocation of half of the Phase G SEDM Levee. Kirkham Michael & Associates, Inc. completed design of the Southeast Connector project and was assisted by Stantec Consulting Services, Inc. on impacted Phase G levee relocation items contained in the design.
- On February 10, 2025, under Roll Call No. 25-0226, the City Council approved plans and specifications for the Southeast Connector from SE 30th Street to US 65 and designated the lowest responsible bidder as C.J. Moyna & Sons, LLC for \$58,999,314.12.
- This project is a two (2)-lane extension of the east-west segment of Martin Luther King, Jr. Parkway from SE 30th Street to South Pleasant Hill Boulevard, as highlighted in yellow in the figure below, and includes:
 - Construction of 2.2 miles of two (2)-lane roadway,
 - Construction of a 1,515-foot-long bridge over Fourmile Creek,
 - Construction of a 12-foot-wide 2.2-mile multi-use trail along the south side of the SE Connector,

- Relocation and improvement of 4,000 feet of the SE Des Moines Levee system,
 - Reconstruction and widening of SE 30th Street between CB & Q Street and Raccoon Street,
 - Construction of SE 36th Street from SE Connector to Vandalia Road,
 - Construction of SE 43rd Street from SE Connector to Vandalia Road,
 - Construction of Onawa Street and SE 32nd Street between SE 30th Street and Maury Street, and
 - Acquisition of all necessary right-of-way and grading to accommodate a future four (4)-lane arterial roadway, if future traffic volumes warrant expansion.
- Construction for the Southeast Connector from SE 30th Street to US 65, including the Phase G SEDM Levee realignment, will begin in 2025 and is scheduled for completion at the end of 2027.
 - Staff negotiated Supplemental Agreement No. 1 to the Agreement for Professional Services with Stantec Consulting Services, Inc. for an additional amount not to exceed \$120,460, based on hourly rates and reimbursable costs, to provide construction administration and observation services related to Phase G SEDM Levee realignment that will be constructed as part of the Southeast Connector Project.



PREVIOUS COUNCIL ACTION(S):

Date: May 10, 2021

Roll Call Number: [21-0676](#)

Action: [Approving](#) exception to Request for Proposal process for good cause and approving the following PSA for Des Moines Levee Alterations – Phases D-H: ([Council Communication No. 21-210](#)) Stantec Consulting Services, Inc. for professional services for Des Moines Levee Alterations – Phases F, G & H, not to exceed \$3,665,100. Moved by Gatto to adopt. Motion Carried 7-0.

BOARD/COMMISSION ACTION(S): NONE

ANTICIPATED ACTIONS AND FUTURE COMMITMENTS:

Additional Supplemental Agreements for construction phase services for Des Moines Levee Alterations – Phases F, G & H and any changes to the U.S. Army Corps of Engineers requirements or risk assessment evaluation of the projects.

For more information on this and other agenda items, please call the City Clerk’s Office at 515-283-4209 or visit the Clerk’s Office on the first floor of City Hall, 400 Robert D Ray Drive. Council agendas are available to the public at the City Clerk’s Office on Thursday afternoon preceding Monday’s Council meeting. Citizens can also request to receive meeting notices and agendas by email by calling the Clerk’s Office or sending their request via email to cityclerk@dmgov.org.