

Date March 8, 2010

An Ordinance entitled, "AN ORDINANCE to amend the Municipal Code of the City of Des Moines, Iowa, 2000, adopted by Ordinance No. 13,827, passed June 5, 2000, and amended by Ordinance No. 13,957 passed June 18, 2001, and Ordinance No. 13,973 passed July 23, 2001, and Ordinance 14,023 passed December 3, 2001, and Ordinance No. 14,075 passed April 22, 2002, and Ordinance No. 14,371 passed September 13, 2004, and Ordinance No. 14,830 passed January 26, 2009, and Ordinance 14,833 passed February 9, 2009, and Ordinance 14,855 passed May 18, 2009, by amending Sections 114-2622, 114-2832, 114-3691 and 114-4112, relating to traffic and vehicle regulations",

presented.

Moved by _____ that this ordinance be considered and given first vote for passage.

FORM APPROVED:

(First of three required readings)

K. Massier
 Katharine Massier
 Assistant City Attorney

(Council Communication No. 10-121)

COUNCIL ACTION	YEAS	NAYS	PASS	ABSENT
COWNIE				
COLEMAN				
GRIESS				
HENSLEY				
MAHAFFEY				
MEYER				
MOORE				
TOTAL				
MOTION CARRIED	APPROVED			

CERTIFICATE

I, DIANE RAUH, City Clerk of said City hereby certify that at a meeting of the City Council of said City of Des Moines, held on the above date, among other proceedings the above was adopted.

IN WITNESS WHEREOF, I have hereunto set my hand and affixed my seal the day and year first above written.

_____ Mayor

_____ City Clerk

SUMMARY OF ORDINANCE NO. _____

AN ORDINANCE to amend the Municipal Code of the City of Des Moines, Iowa, 2000, adopted by Ordinance No. 13,827, passed June 5, 2000, as heretofore amended, by amending Chapter 114 Traffic & Vehicle Regulations as summarized below. The complete text of the ordinance is available in the City of Des Moines City Clerk's Office, 400 Robert D. Ray Drive, Des Moines, Iowa, or on the City of Des Moines' website at www.dmgov.org.

DES MOINES TRAFFIC REGULATION CHANGES

Amending Chapter 114 of the Municipal Code regarding traffic regulation changes as follows:

- A. One side parking restriction—east side of E 4th Street north of Des Moines Street.
- B. Parking restriction extension—south side of University Avenue west of 28th Street.
- C. Code revisions for streets that have had field adjustments.

FORM APPROVED:

Katharine Massier, Assistant City Attorney

T.M. Franklin Cownie, Mayor

Attest:

I, Diane Rauh, City Clerk of the City of Des Moines, Iowa, hereby certify that the above and foregoing is a summary of Ordinance No. _____, passed by the City Council of said City on _____, signed by the Mayor on _____, and published as provided by law in the Business Record on _____. Authorized by Publication Order No. _____.

Diane Rauh, City Clerk

ORDINANCE NO. _____

AN ORDINANCE to amend the Municipal Code of the City of Des Moines, Iowa, 2000, adopted by Ordinance No. 13,827, passed June 5, 2000, and amended by Ordinance No. 13,957 passed June 18, 2001, and Ordinance No. 13,973 passed July 23, 2001, and Ordinance 14,023 passed December 3, 2001, and Ordinance No. 14,075 passed April 22, 2002, and Ordinance No. 14,371 passed September 13, 2004, and Ordinance No. 14,830 passed January 26, 2009, and Ordinance 14,833 passed February 9, 2009, and Ordinance 14,855 passed May 18, 2009, by amending Sections 114-2622, 114-2832, 114-3691 and 114-4112, relating to traffic and vehicle regulations.

Be It Ordained by the City Council of the City of Des Moines, Iowa:

Section 1. That the Municipal Code of the City of Des Moines, Iowa, 2000, adopted by Ordinance No. 13,827, passed June 5, 2000, and amended by Ordinance No. 13,957 passed June 18, 2001, and Ordinance No. 13,973 passed July 23, 2001, and Ordinance 14,023 passed December 3, 2001, and Ordinance No. 14,075 passed April 22, 2002, and Ordinance No. 14,371 passed September 13, 2004, and Ordinance No. 14,830 passed January 26, 2009, and Ordinance 14,833 passed February 9, 2009, and Ordinance 14,855 passed May 18, 2009, is hereby amended by amending Sections 114-2622, 114-2832, 114-3691 and 114-4112, relating to traffic and vehicle regulations, as follows:

Sec. 114-2622. East Fourth Street--East Vine Street to Maple Street.

East Fourth Street, on the east side, from East Vine Street to East Court Avenue, no parking any time.

East Fourth Street, on the west side, from East Walnut Street to a point 220 feet south thereof, no parking any time.

East Fourth Street, on both sides, from a point 50 feet north of East Grand Avenue to a point 50 feet south thereof, no parking any time.

East Fourth Street, on both sides, from a point 50 feet south of Des Moines Street to Des Moines Street, no parking any time.

East Fourth Street, on the east side, from Des Moines Street to a point 50 feet north thereof, no parking any time.

East Fourth Street, on the east side, from a point 200 feet north of Des Moines Street to a point 90 feet north thereof, no parking any time.

East Fourth Street, on the west side, from Des Moines Street to Maple Street, no parking any time.

Sec. 114-2832. Southeast Twenty-fifth Street--East Court Avenue to East Payton Avenue.

Southeast Twenty-fifth Street, on the east side, from Shaw Street to Maury Street, no parking any time.

Southeast Twenty-fifth Street, on both sides, from Railroad Court to East Railroad Avenue, no parking any time.

Southeast Twenty-fifth Street, on the east side, from East Park Avenue south to and including the cul-de-sac, no parking any time.

Southeast Twenty-fifth Street, on the eastwest side, from Southeast Twenty-fourth Court to East Leach Avenue, no parking any time.

Southeast Twenty-fifth Street, on the west side, from Hart Avenue to East Payton Avenue, no parking any time.

Sec. 114-3691. University Avenue--Twenty-eighth Street to Thirty-first Street.

University Avenue, on the south side, from Twenty-eighth Street to a point 200 feet west thereof, no parking any time.

University Avenue, on the south side, from a point 200 feet west of Twenty-eighth Street to a point ~~340~~260 feet west thereof, no parking 7:00 a.m. to 9:00 a.m.

University Avenue, on the south side, from a point ~~540~~460 feet west of Twenty-eighth Street to Twenty-ninth Street, no parking any time.

University Avenue, on the south side, from Twenty-ninth Street to a point 75 feet west thereof, no parking any time.

University Avenue, on the south side, from a point 75 feet west of Twenty-ninth Street to a point 195 feet west thereof, no parking 7:00 a.m. to 9:00 a.m.

University Avenue, on the south side, from a point 270 feet west of Twenty-ninth Street to Thirty-first Street, no parking any time.

University Avenue, on the north side, from Twenty-eighth Street to a point 50 feet west thereof, no parking any time.

University Avenue, on the north side, from a point 50 feet west of Twenty-eighth Street to a point 100 feet west thereof, passenger loading and unloading, ten minutes only.

University Avenue, on the north side, from a point 150 feet west of Twenty-eighth Street, to a point 50 feet west thereof, no parking any time.

University Avenue, on the north side, from a point 200 feet west of Twenty-eighth Street to a point 200 feet west thereof, no parking 4:00 p.m. to 6:00 p.m.

University Avenue, on the north side, from a point 400 feet west of Twenty-eighth Street to a point 210 feet west thereof, no parking any time.

University Avenue, on the north side, from a point 610 feet west of Twenty-eighth Street to a point 80 feet west thereof, no parking 4:00 p.m. to 6:00 p.m.

University Avenue, on the north side, from a point 690 feet west of Twenty-eighth Street to a point 175 feet west thereof, no parking any time.

University Avenue, on the north side, from a point 865 feet west of Twenty-eighth Street to a point 120 feet west thereof, no parking 4:00 p.m. to 6:00 p.m.

University Avenue, on the north side, from a point 985 feet west of Twenty-eighth Street to a point 100 feet west thereof, no parking any time.

University Avenue, on the north side, from a point 1085 feet west of Twenty-eighth Street to a point 80 feet east of Thirty-first Street, no parking 4:00 p.m. to 6:00 p.m.

University Avenue, on the north side, from a point 1085 feet west of Twenty-eighth Street to a point 80 feet east of Thirty-first Street, two-hour parking 9:00 a.m. to 4:00 p.m.

University Avenue, on the north side, from Thirty-first Street to a point 80 feet east thereof, no parking any time.

Sec. 114-4112. East Walnut Street--East Third Street to East Fourth Street.

East Walnut Street, on the north side, from a point 50 feet east of East Third Street to East Fourth Street, ten-hour meters, 8:00 a.m. to 6:00 p.m.

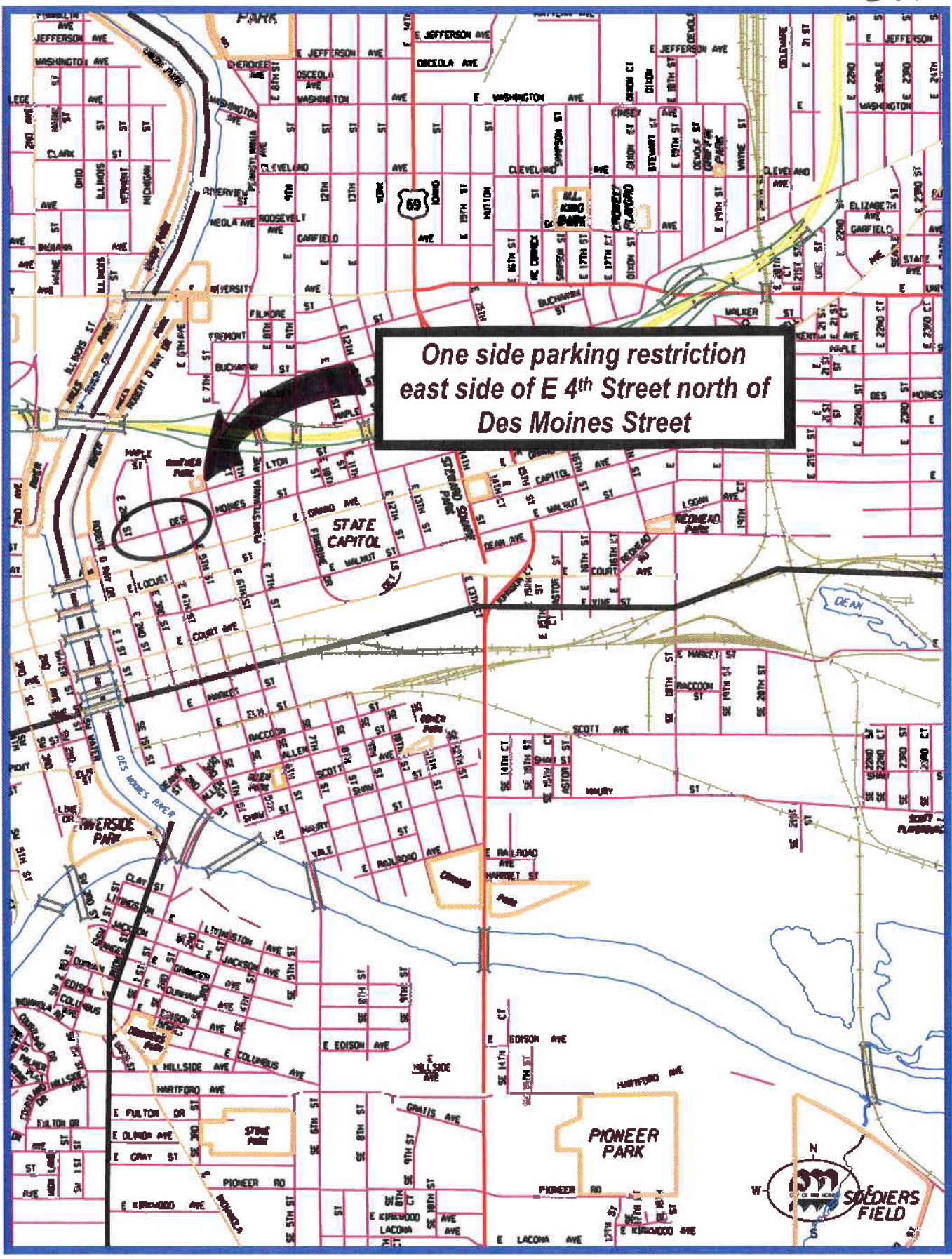
East Walnut Street, on the south side, from a point 40 feet east of East Third Street to a point 11575 feet east thereof, two-hour meters, 8:00 a.m. to 6:00 p.m.

East Walnut Street, on the south side, from a point 270 feet east of East Third Street to East Fourth Street, two-hour meters, 8:00 a.m. to 6:00 p.m.

Sec. 2. This ordinance shall be in full force and effect from and after its passage and publication as provided by law.

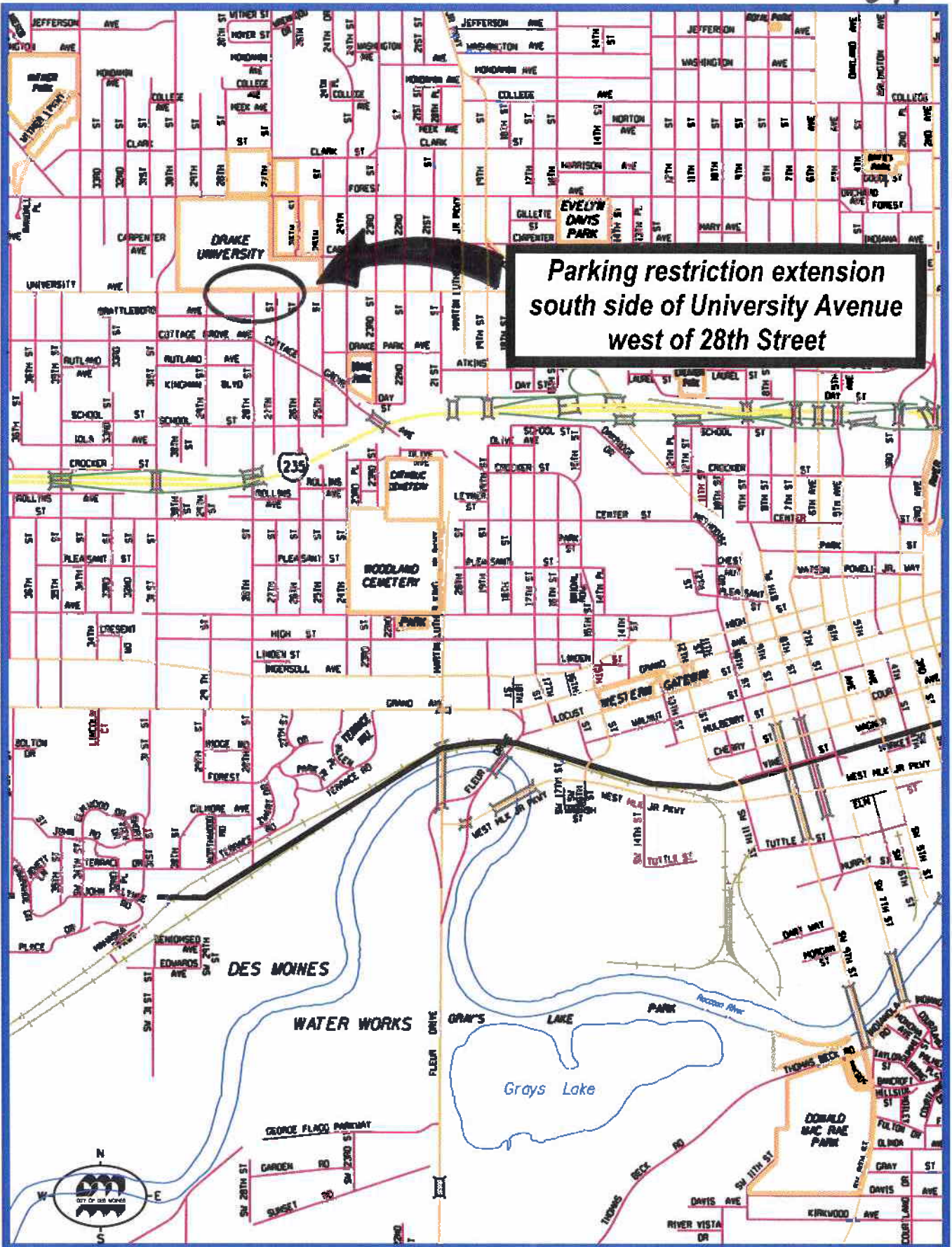
FORM APPROVED:

K. Massier
Katharine Massier
Assistant City Attorney



**One side parking restriction
east side of E 4th Street north of
Des Moines Street**





**Parking restriction extension
south side of University Avenue
west of 28th Street**

