



Date May 18, 2009

An Ordinance entitled, "AN ORDINANCE to amend the Municipal Code of the City of Des Moines, Iowa, 2000, adopted by Ordinance No. 13,827, passed June 5, 2000, and amended by Ordinance No. 13,855 passed August 21, 2000, and Ordinance 13,870 passed October 16, 2000, and Ordinance No. 13,893 passed December 4, 2000, and Ordinance No. 13,918 passed February 12, 2001, and Ordinance No. 13,924 passed February 26, 2001, and Ordinance No. 13,958 passed June 18, 2001, and Ordinance No. 13,973 passed July 23, 2001, and Ordinance No. 14,038 passed January 7, 2002, and Ordinance No. 14,071 passed April 8, 2002, and Ordinance No. 14,087 passed May 6, 2002, and Ordinance No. 14,110 passed June 17, 2002, and Ordinance No. 14,197 passed January 6, 2003, and Ordinance No. 14,212 passed March 10, 2003, and Ordinance No. 14,336 passed April 19, 2004, and Ordinance No. 14,338 passed May 17, 2004, and Ordinance No. 14,348 passed June 21, 2004, and Ordinance No. 14,371 passed September 13, 2004, and Ordinance No. 14,421 passed March 7, 2005, and Ordinance No. 14,428 passed April 11, 2005, and Ordinance No. 14,437 passed April 25, 2005, and Ordinance No. 14,449 passed May 23, 2005, and Ordinance No. 14,476 passed August 8, 2005, and Ordinance No. 14,518 passed December 5, 2005, and Ordinance No. 14,542 passed February 6, 2006, and Ordinance 14,627 passed February 12, 2007, and Ordinance No. 14,653 passed May 21, 2007, and Ordinance No. 14,727 passed December 3, 2007, and Ordinance No. 14,748 passed March 10, 2008, and Ordinance No. 14,764 passed May 5, 2008, and Ordinance No. 14,833 passed February 9, 2009, and Ordinance No. 14,844 passed April 6, 2009 by amending Sections 114-1302, 114-1313, 114-1314, 114-1441, 114-1460, 114-1468.01, 114-1480.01, 114-1546.05, 114-1550.05, 114-2029, 114-2177, 114-2205, 114-2321.06, 114-2466, 114-2496, 114-2609, 114-2622, 114-2632, 114-2633, 114-2656, 114-2670, 114-2682, 114-2823, 114-2921, 114-3109, 114-3196, 114-3267, 114-3276, 114-3283, 114-3284, 114-3288, 114-3466, 114-3602.1, 114-3605.06, 114-3629.1, 114-3873, 114-3926, 114-3966, and 114-3967 and repealing Sections 114-1456, 114-2735, 114-2739, 114-2751, 114-3076.05, 114-3503, 114-3569, 114-3671.01, 114-3972, 114-3989, 114-3996 and 114-4007, and adding enacting new Sections 114-1312.05, 114-1546.01, 114-1547.02, 114-1551.01, 114-2196.05, 114-3137.05, 114-3166.05, 114-3171.05, 114-3602.05, and 114-3775.5 thereof, relating to traffic and vehicle regulations",

presented.

Moved by _____ that this ordinance be considered and given first vote for passage.

FORM APPROVED:

K. Massier
Katharine Massier
Assistant City Attorney

(First of three required readings)

(Council Communication No. 09-324)

Table with columns: COUNCIL ACTION, YEAS, NAYS, PASS, ABSENT. Rows include COWNIE, COLEMAN, HENSLEY, KIERNAN, MAHAFFEY, MEYER, VLASSIS, TOTAL, MOTION CARRIED, APPROVED, Mayor.

CERTIFICATE

I, DIANE RAUH, City Clerk of said City hereby certify that at a meeting of the City Council of said City of Des Moines, held on the above date, among other proceedings the above was adopted.

IN WITNESS WHEREOF, I have hereunto set my hand and affixed my seal the day and year first above written.

City Clerk

SUMMARY OF ORDINANCE NO. _____

AN ORDINANCE to amend the Municipal Code of the City of Des Moines, Iowa, 2000, adopted by Ordinance No. 13,827, passed June 5, 2000, as heretofore amended, by amending Chapter 114 Traffic & Vehicle Regulations as summarized below. The complete text of the ordinance is available in the City of Des Moines City Clerk's Office, 400 Robert D. Ray Drive, Des Moines, Iowa, or on the City of Des Moines' website at www.dmgov.org.

DES MOINES TRAFFIC REGULATION CHANGES

Amending Chapter 114 of the Municipal Code regarding traffic regulation changes as follows:

- A. Parking Modifications—5th Avenue from School Street to Grand Avenue.
- B. Parking Restrictions—Woods on the River Plats 6, 8, and 9.
- C. Parking Restrictions for Traffic Calming Measures on 41st Street and 42nd Street Between University Avenue and Forest Avenue.
- D. Euclid Avenue Speed Limit Changes
- E. Code Revisions for Streets that have been Vacated, Renamed, or had Field Adjustments.

FORM APPROVED:

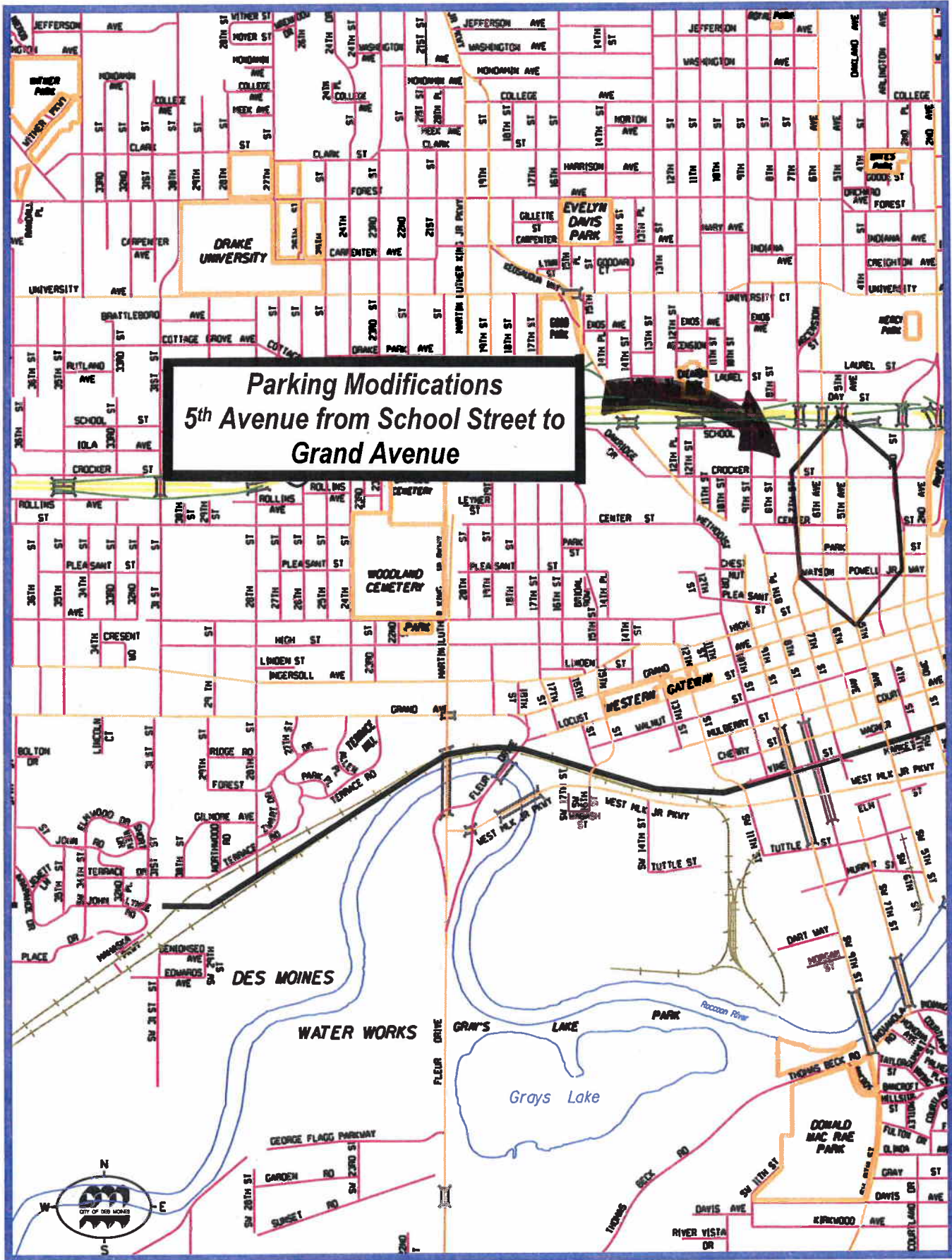
K. Massier
 Katharine Massier, Assistant City Attorney

 T.M. Franklin Cownie, Mayor

Attest:

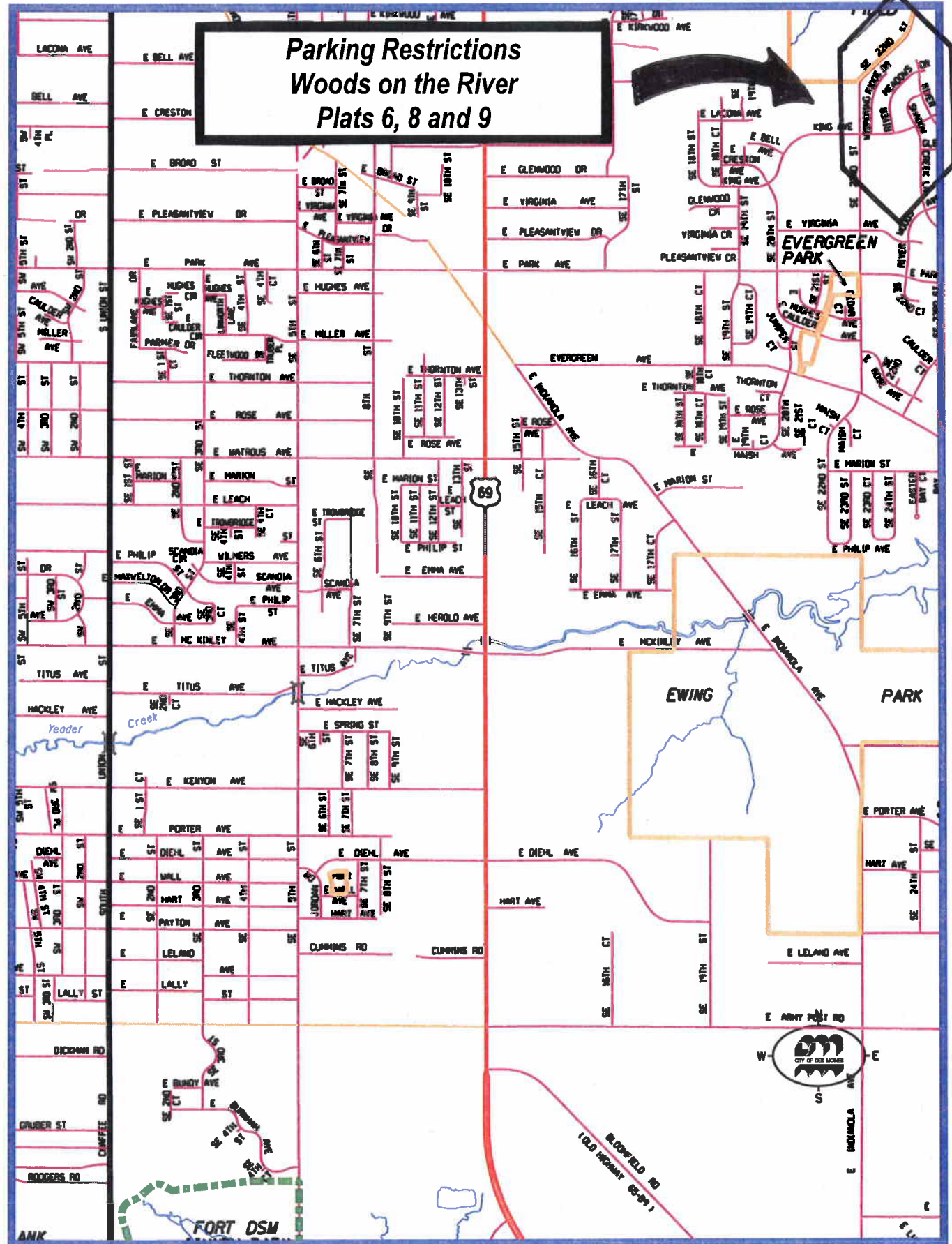
I, Laura Baumgartner, Chief Deputy City Clerk of the City of Des Moines, Iowa, hereby certify that the above and foregoing is a summary of Ordinance No. _____, passed by the City Council of said City on _____, signed by the Mayor on _____, and published as provided by law in the Business Record on _____. Authorized by Publication Order No. _____.

Laura Baumgartner, Chief Deputy City Clerk



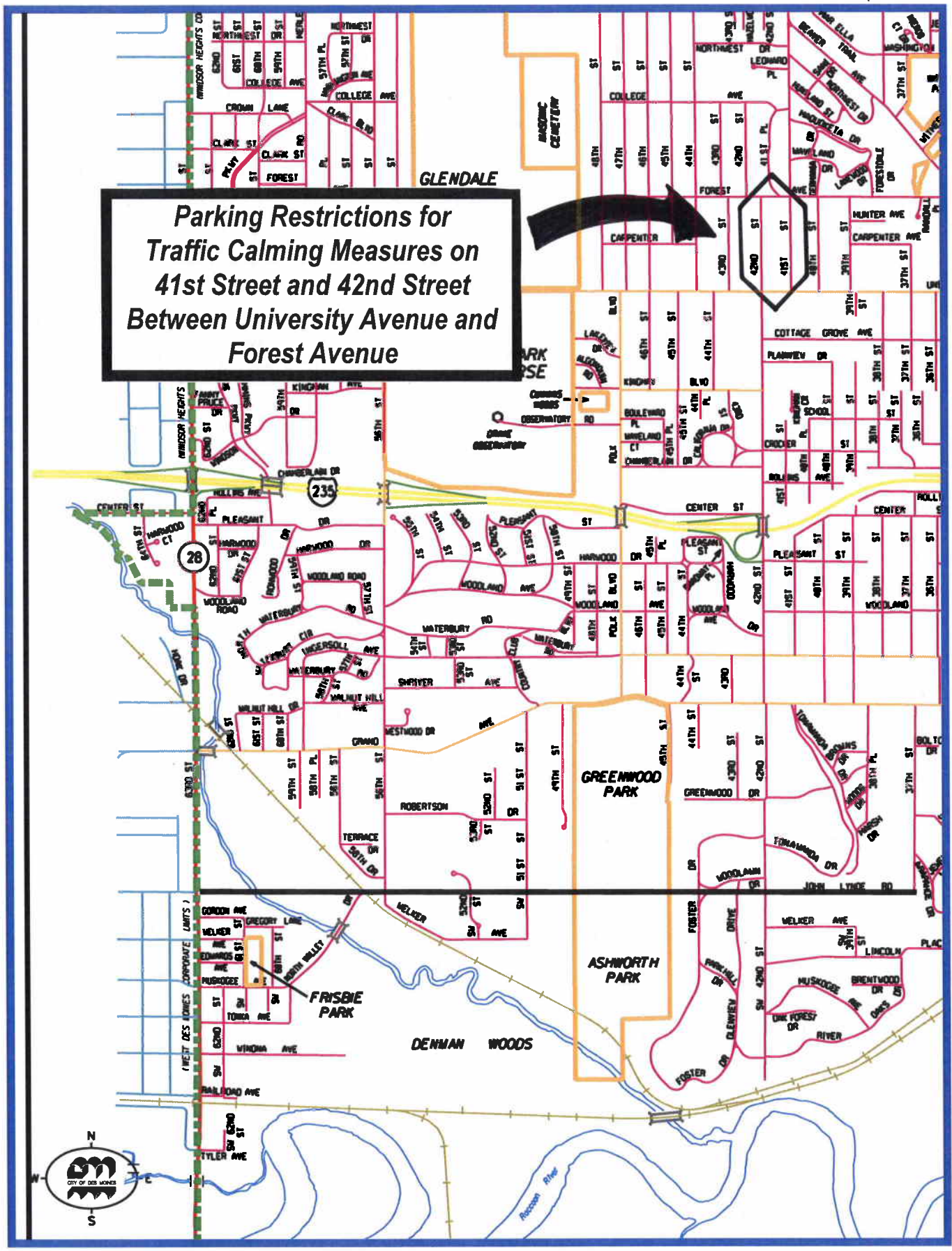
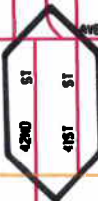
59B.

**Parking Restrictions
Woods on the River
Plats 6, 8 and 9**

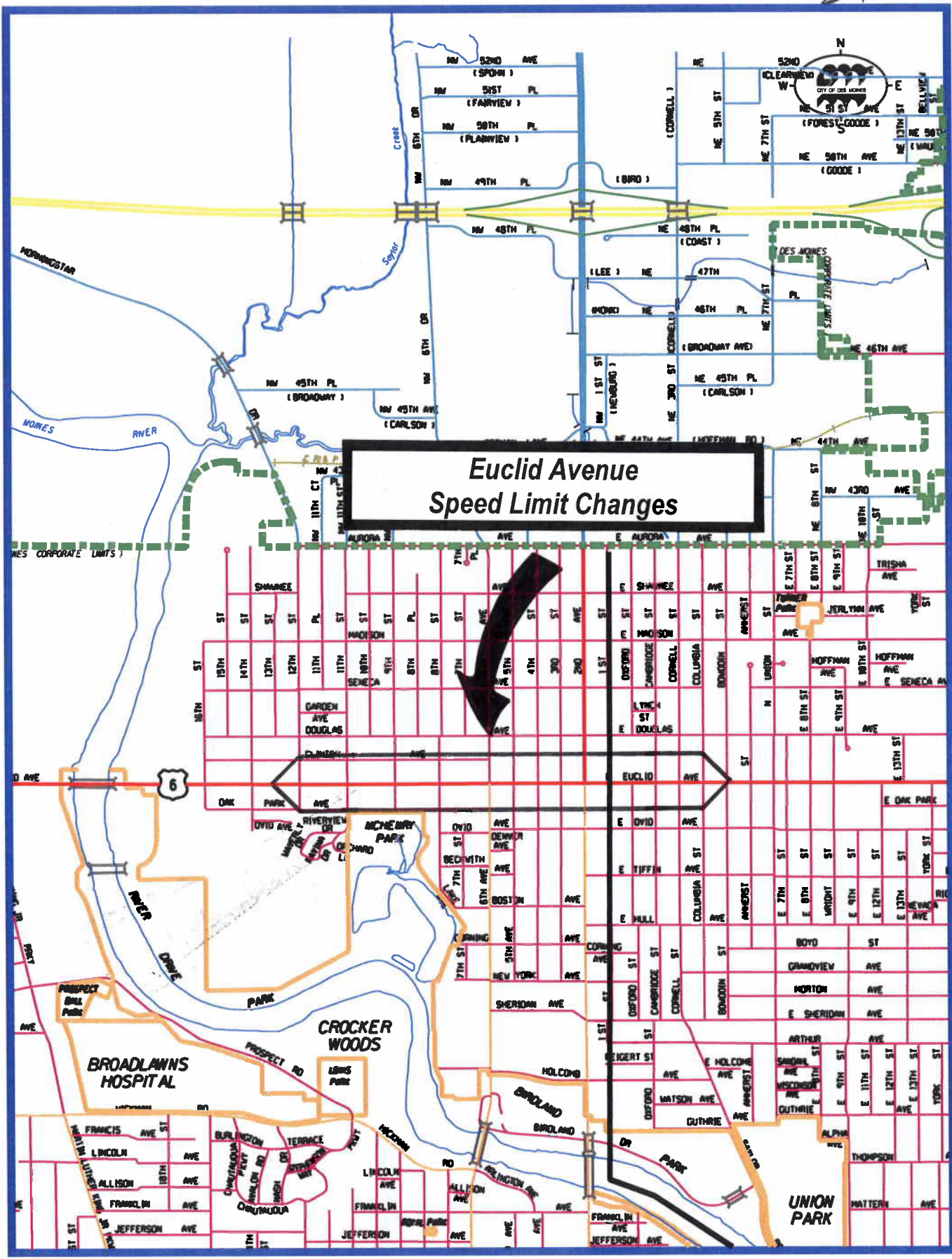


59c.

**Parking Restrictions for
Traffic Calming Measures on
41st Street and 42nd Street
Between University Avenue and
Forest Avenue**



59D.



ORDINANCE NO. _____

AN ORDINANCE to amend the Municipal Code of the City of Des Moines, Iowa, 2000, adopted by Ordinance No. 13,827, passed June 5, 2000, and amended by Ordinance No. 13,855 passed August 21, 2000, and Ordinance 13,870 passed October 16, 2000, and Ordinance No. 13,893 passed December 4, 2000, and Ordinance No. 13,918 passed February 12, 2001, and Ordinance No. 13,924 passed February 26, 2001, and Ordinance No. 13,958 passed June 18, 2001, and Ordinance No. 13,973 passed July 23, 2001, and Ordinance No. 14,038 passed January 7, 2002, and Ordinance No. 14,071 passed April 8, 2002, and Ordinance No. 14,087 passed May 6, 2002, and Ordinance No. 14,110 passed June 17, 2002, and Ordinance No. 14,197 passed January 6, 2003, and Ordinance No. 14,212 passed March 10, 2003, and Ordinance No. 14,336 passed April 19, 2004, and Ordinance No. 14,338 passed May 17, 2004, and Ordinance No. 14,348 passed June 21, 2004, and Ordinance No. 14,371 passed September 13, 2004, and Ordinance No. 14,421 passed March 7, 2005, and Ordinance No. 14,428 passed April 11, 2005, and Ordinance No. 14,437 passed April 25, 2005, and Ordinance No. 14,449 passed May 23, 2005, and Ordinance No. 14,476 passed August 8, 2005, and Ordinance No. 14,518 passed December 5, 2005, and Ordinance No. 14,542 passed February 6, 2006, and Ordinance 14,627 passed February 12, 2007, and Ordinance No. 14,653 passed May 21, 2007, and Ordinance No. 14,727 passed December 3, 2007, and Ordinance No. 14,748 passed March 10, 2008, and Ordinance No. 14,764 passed May 5, 2008, and Ordinance No. 14,833 passed February 9, 2009, and Ordinance No. 14,844 passed April 6, 2009 by amending Sections 114-1302, 114-1313, 114-1314, 114-1441, 114-1460, 114-1468.01, 114-1480.01, 114-1546.05, 114-1550.05, 114-2029, 114-2177, 114-2205, 114-2321.06, 114-2466, 114-2496, 114-2609, 114-2622, 114-2632, 114-2633, 114-2656, 114-2670, 114-2682, 114-2823, 114-2921, 114-3109, 114-3196, 114-3267, 114-3276, 114-3283, 114-3284, 114-3288, 114-3466, 114-3602.1, 114-3605.06, 114-3629.1, 114-3873, 114-3926, 114-3966, and 114-3967 and repealing Sections 114-1456, 114-2735, 114-2739, 114-2751, 114-3076.05, 114-3503, 114-3569, 114-3671.01, 114-3972, 114-3989, 114-3996 and 114-4007, and adding enacting new Sections 114-1312.05, 114-1546.01, 114-1547.02, 114-1551.01, 114-2196.05, 114-3137.05, 114-3166.05, 114-3171.05, 114-3602.05, and 114-3775.5 thereof, relating to traffic and vehicle regulations.

Be It Ordained by the City Council of the City of Des Moines, Iowa:

Section 1. That the Municipal Code of the City of Des Moines, Iowa, 2000, adopted by Ordinance No. 13,827, passed June 5, 2000, and amended by Ordinance No. 13,855 passed August 21, 2000, and Ordinance 13,870 passed October 16, 2000, and Ordinance No. 13,893 passed December 4, 2000, and Ordinance No. 13,918 passed February 12, 2001, and Ordinance No. 13,924 passed February 26, 2001, and Ordinance No. 13,958 passed

June 18, 2001, and Ordinance No. 13,973 passed July 23, 2001, and Ordinance No. 14,038 passed January 7, 2002, and Ordinance No. 14,071 passed April 8, 2002, and Ordinance No. 14,087 passed May 6, 2002, and Ordinance No. 14,110 passed June 17, 2002, and Ordinance No. 14,197 passed January 6, 2003, and Ordinance No. 14,212 passed March 10, 2003, and Ordinance No. 14,336 passed April 19, 2004, and Ordinance No. 14,338 passed May 17, 2004, and Ordinance No. 14,348 passed June 21, 2004, and Ordinance No. 14,371 passed September 13, 2004, and Ordinance No. 14,421 passed March 7, 2005, and Ordinance No. 14,428 passed April 11, 2005, and Ordinance No. 14,437 passed April 25, 2005, and Ordinance No. 14,449 passed May 23, 2005, and Ordinance No. 14,476 passed August 8, 2005, and Ordinance No. 14,518 passed December 5, 2005, and Ordinance No. 14,542 passed February 6, 2006, and Ordinance 14,627 passed February 12, 2007, and Ordinance No. 14,653 passed May 21, 2007, and Ordinance No. 14,727 passed December 3, 2007, and Ordinance No. 14,748 passed March 10, 2008, and Ordinance No. 14,764 passed May 5, 2008, and Ordinance No. 14,833 passed February 9, 2009, and Ordinance No. 14,844 passed April 6, 2009 is hereby amended by amending Sections 114-1302, 114-1313, 114-1314, 114-1441, 114-1460, 114-1468.01, 114-1480.01, 114-1546.05, 114-1550.05, 114-2029, 114-2177, 114-2205, 114-2321.06, 114-2466, 114-2496, 114-2609, 114-2622, 114-2632, 114-2633, 114-2656, 114-2670, 114-2682, 114-2823, 114-2921, 114-3109, 114-3196, 114-3267, 114-3276, 114-3283, 114-3284, 114-3288, 114-3466, 114-3602.1, 114-3605.06, 114-3629.1, 114-3873, 114-3926, 114-3966, and 114-3967 and repealing Sections 114-1456, 114-2735, 114-2739, 114-2751, 114-3076.05, 114-3503, 114-3569, 114-3671.01, 114-3972, 114-3989, 114-3996 and 114-4007, and adding enacting new Sections 114-1312.05, 114-1546.01, 114-1547.02, 114-1551.01, 114-2196.05, 114-3137.05, 114-3166.05, 114-3171.05, 114-3602.05, and 114-3775.5 thereof, relating to traffic and vehicle regulations, as follows:

Sec. 114-1302. County Line Road.

County Line Road, from South Union Street to Southwest Ninth Street, 35 miles per hour.

County Line Road, from Southwest Ninth Street to a point 300 feet west of Southwest Eleventh Street, 30 miles per hour.

County Line Road, from a point 300 feet west of Southwest Eleventh Street to Fleur Drive, 35 miles per hour.

~~County Line Road, from Fleur Drive to a point 2,500 feet west of Fleur Drive, 40 miles per hour.~~

~~County Line Road, from a point 2,500 feet west of Fleur Drive to the west city limits, 50 miles per hour.~~

Sec. 1312.05. Echo Valley Drive.

Echo Valley Drive, from Fleur Drive to a point 2,500 feet west of Fleur Drive, 40 miles per hour.

Echo Valley Drive, from a point 2,500 feet west of Fleur Drive to the west city limits, 50 miles per hour.

Sec. 114-1313. Euclid Avenue.

Euclid Avenue, from a point ~~500~~²²⁵ feet west of ~~Sixth Avenue~~^{Twelfth Street}, to a point ~~100 feet east of~~ First Street, 30 miles per hour.

Euclid Avenue, from Douglas Avenue to a point ~~500~~²²⁵ feet west of ~~Sixth Avenue~~^{Twelfth Street}, 35 miles per hour.

Euclid Avenue, from Thirtieth Street to Douglas Avenue, 30 miles per hour.

Sec. 114-1314. East Euclid Avenue.

East Euclid Avenue, from First Street to a point 150 feet east of Columbia Street, 30 miles per hour.

East Euclid Avenue, from a point ~~100 feet east of First Street~~ 150 feet east of Columbia Street to East Twenty-ninth Street, 35 miles per hour.

East Euclid Avenue, from East Twenty-ninth Street to Avenue Frederick M. Hubbell, 40 miles per hour.

Sec. 114-1441. Crocker Street.

Crocker Street and Second Avenue, traffic control signal.

Crocker Street and Third Street, traffic control signal.

Crocker Street and Fifth Avenue, traffic control signal.

Crocker Street and Sixth Avenue, traffic control signal.

Crocker Street and Seventh Avenue, traffic control signal.

Sec. 114-1442.05. Dart Way

Dart Way and Southwest Ninth Street, traffic control signal.

Sec. 114-1457. ~~Grandview Avenue~~ Repealed by Ord. No. 14,---

~~Grandview Avenue and East Fourteenth Street, traffic control signal.~~

Sec. 114-1460. Hickman Road.

Hickman Road and Martin Luther King, Jr. Parkway, traffic control signal.

Hickman Road and Thirtieth Street, traffic control signal.

Hickman Road and Forty-eighth Street, traffic control signal.

Hickman Road and Merle Hay Road, traffic control signal.

Hickman Road and Sixty-third Street, traffic control signal.

Sec. 114-1468.01. Kingman Boulevard.

Kingman Boulevard and Thirty-first Street, traffic control signal.

Kingman Boulevard and Forty-second Street, traffic control signal.

Sec. 114-1480.01. ~~MTA Lane~~ Morton Avenue.

~~MTA Lane and Southwest Ninth Street, traffic control signal~~ Morton Avenue and East Fourteenth Street, traffic control signal.

Sec. 114-1546.01. Merle Hay Road.

Merle Hay Road, on the east side, at a point 650 feet north of Douglas Avenue, traffic control signal.

Sec. 114-1546.~~01~~05. Park Avenue.

Park Avenue, on the south side, at a point 156 feet east of Southwest Twenty-eighth Street, school signal.

Park Avenue, on the north side, at a point 1,305 feet west of George Flagg Parkway, traffic control signal.

Park Avenue, on the north side, at a point 2,755 feet west of George Flagg Parkway, traffic control signal.

Sec. 114-1547.02. University Avenue.

University Avenue, on the south side, at a point 125 feet east of Twenty-ninth Street, school signal.

Sec. 114-1550.03. Fourteenth Street.

East Fourteenth Street, on the east side, at a point 300 feet north of Morton Avenue, school signal.

Sec. 114-1551.01. Thirtieth Street.

Thirtieth Street, on the west side, at a point 5 feet north of Carpenter Avenue, school signal.

Sec. 114-2029. Fourteenth Street.

Fourteenth Street, from the north line of Locust Street to the south line of ~~Woodland Avenue~~Ingersoll Avenue, stop.

Fourteenth Street, from the north curblineline of Euclid Avenue to the south curblineline of Madison Avenue, stop.

Fourteenth Street, at Seneca Avenue, stop.

Sec. 114-2177. County Line Road.

County Line Road, on the north half, from the west line of Southwest Ninth Street to the ~~west corporate limits~~east line of Fleur Drive, stop.

County Line Road, on the north half, from the east line of Southwest Ninth Street to the west line of Southeast Fourteenth Street, stop.

Sec. 114-2196.05. Echo Valley Drive.

County Line Road, on the north half, from the west line of Fleur Drive to the west corporate limits, stop.

Sec. 114-2205. Filmore Street.

Filmore Street, at East Eight Street, stop.

~~The driver of a vehicle southbound on East River Drive at Filmore Street shall yield the right-of-way to westbound traffic on Filmore Street, yield.~~

Sec. 114-2321.06. Robert D Ray Drive.

Robert D Ray Drive, from the north line of East Locust Street to the north line of Des Moines Street, stop.

The driver of a vehicle southbound on Robert D Ray Drive at East Sixth Street shall yield the right-of-way to westbound traffic from East Sixth Street, yield.

Sec. 114-2466. Thirteenth Street.

Thirteenth Street, from ~~Cherry~~Mulberry Street to ~~High Street~~Grand Avenue.

Sec. 114-2496. Cherry Street.

Cherry Street, from Fifth Avenue to ~~Thirteenth~~Twelfth Street.

Sec. 114-2593. Second Place--~~Short Street~~Forest Avenue to College Avenue.

Second Place, on the west side, from Forest Avenue to College Avenue, no parking any time.

Second Place, on the east side, from College Avenue to a point 50 feet south thereof, no parking any time.

Sec. 114-2609. Third Street--School Street to University Avenue.

Third Street, on both sides, from School Street to Laurel Street, no parking any time.

~~Third Street, on the east side, from Laurel Street to a point 330 feet north thereof, no parking any time.~~

~~Third Street, on the west side, from Laurel Street to University Avenue, no parking any time.~~

~~Third Street, on the east side, from University Avenue to a point 90 feet south thereof, no parking any time.~~

Sec. 114-2622. East Fourth Street--East Vine Street to Maple Street.

East Fourth Street, on the east side, from East Vine Street to East Court Avenue, no parking any time.

East Fourth Street, on the west side, from East Walnut Street to a point ~~75~~220 feet south thereof, no parking any time.

East Fourth Street, on both sides, from a point 50 feet north of East Grand Avenue to a point 50 feet south thereof, no parking any time.

East Fourth Street, on both sides, from a point 50 feet south of Des Moines Street to Des Moines Street, no parking any time.

East Fourth Street, on the east side, from Des Moines Street to a point 50 feet north thereof, no parking any time.

East Fourth Street, on the west side, from Des Moines Street to Maple Street, no parking any time.

Sec. 114-2632. Fifth Avenue--Grand Avenue to Watson Powell Jr Way.

~~Fifth Avenue, on the east side, from Grand Avenue to a point 35 feet north thereof, no parking any time.~~

Fifth Avenue, on the east side, from a point 212 feet south of Watson Powell Jr Way to a point 21 feet south thereof, loading zone.

~~Fifth Avenue, on the east side, from a point 212 feet south of Watson Powell Jr Way to a point 21 feet south thereof, no stopping or standing, 7:00 a.m. to 9:00 a.m., weekdays.~~

Fifth Avenue, on the east side, from a point ~~50~~60 feet north of Grand Avenue to a point 35 feet north thereof, commercial loading zone, 9:00 a.m. to 6:00 p.m., Monday through Friday and 8:00 a.m. to 6:00 p.m. Saturday.

Fifth Avenue, on the east side, from a point 60 feet north of Grand Avenue to a point 35 feet north thereof, no stopping or standing, 7:00 a.m. to 9:00 a.m., weekdays.

Fifth Avenue, on the east side, from a point ~~185~~175 feet north of Grand Avenue to a point ~~150~~110 feet north thereof, no parking any time.

Fifth Avenue, on the east side, from Grand Avenue to Watson Powell Jr Way, no parking 7:00 a.m. to 9:00 a.m.

Fifth Avenue, on the west side, from Grand Avenue to a point 150 feet north thereof, no parking any time.

~~Fifth Avenue, on the west side, from a point 150 feet north of Grand Avenue to Watson Powell Jr Way, no parking 7:00 a.m. to 9:00 a.m.~~

Fifth Avenue, on the west side, from Watson Powell Jr Way to a point 30 feet south thereof, no parking any time.

Fifth Avenue, on the east side, from Watson Powell Jr Way to a point 40 feet south thereof, no parking any time.

Sec. 114-2633. Fifth Avenue--Watson Powell Jr Way to School Street.

Fifth Avenue, on the east side, from Watson Powell Jr Way to a point 20 feet north thereof, no parking any time.

Fifth Avenue, on the west side, from Watson Powell Jr Way to a point ~~30~~55 feet north thereof, no parking any time.

Fifth Avenue, on the east side, from a point ~~120~~130 feet north of Watson Powell Jr Way to a point 25 feet north thereof, commercial loading zone.

Fifth Avenue, on the west side, from Park Street to a point 20 feet north thereof, no parking any time.

Fifth Avenue, on both sides, from Park Street to a point 20 feet north thereof, no parking any time.

Fifth Avenue, on the east side, from Park Street to a point 45 feet south thereof, no parking any time.

Fifth Avenue, on the east side, from Center Street to Crocker Street, no parking any time.

Fifth Avenue, on the west side, from School Street to ~~a point 290 feet south thereof~~Crocker Street, no parking any time.

~~Fifth Avenue, on the west side, from a point 290 feet south of School Street to Crocker Street, no parking 7:00 a.m. to 9:00 a.m., weekdays.~~

Fifth Avenue, on the west side, from Center Street to a point 20 feet south thereof, no parking any time.

Fifth Avenue, on the east side, from Center Street to a point 40 feet south thereof, no parking any time.

Fifth Avenue, on the west side, from Center Street to a point 50 feet north thereof, no parking any time.

Fifth Avenue, on the east side, from Crocker Street to School Street, no parking any time.

Sec. 114-2656. East Sixth Street--Des Moines Street to East University Avenue.

East Sixth Street, on both sides, from Des Moines Street to Lyon Street, no parking

any time.

East Sixth Street, on the west side, from a point 125 feet north of Buchanan Street to a point 75 feet north thereof, no parking any time.

East Sixth Street, on the east side, from Buchanan Street to a point 775 feet north thereof, school passenger loading and unloading 7:00 a.m. to 5:00 p.m. school days.

East Sixth Street, on the west side, from a point 75 feet south of ~~Filmore Street~~ Robert D Ray Drive to East University Avenue, no parking any time.

East Sixth Street, on the east side, from 775 feet north of Buchanan Street to East University Avenue, no parking any time.

Sec. 114-2670. East Seventh Street--East Vine Street to East Aurora Avenue.

East Seventh Street, on the east side, from East Vine Street to East Court Avenue, no parking any time.

East Seventh Street, on the west side, from a point 160 feet north of East Court Avenue to a point 40 feet north thereof, commercial loading zone.

East Seventh Street, on the east side, from a point 110 feet north of East Walnut Street to a point 30 feet north thereof, commercial loading zone.

East Seventh Street, on the west side, from Lyon Street to a point 340 feet north thereof, no parking any time.

East Seventh Street, on the east side, from Walker Street to a point 55 feet north thereof, no parking any time.

East Seventh Street, on the east side, from Buchanan Street to a point 50 feet south thereof, no parking any time.

East Seventh Street, on the west side, from Walker Street to Fremont Street, no parking any time.

East Seventh Street, on the east side, from Fremont Street to a point 50 feet south thereof, no standing or stopping.

East Seventh Street, on the east side, from a point 50 feet south of Fremont Street to a point 120 feet south thereof, passenger loading and unloading 7:00 a.m. to 5:00 p.m. school days.

~~East Seventh Street, on the west side, from Filmore Street to East University Avenue, no parking any time.~~

East Seventh Street, on the east side, from Hull Avenue to a point 75 feet north thereof, no parking any time.

East Seventh Street, on the west side, from Hull Avenue to East Douglas Avenue, no parking any time.

East Seventh Street, on the east side, from East Euclid Avenue to a point 50 feet south thereof, no parking any time.

East Seventh Street, on the east side, from East Euclid Avenue to a point 50 feet north thereof, no parking any time.

East Seventh Street, on the west side, from East Shawnee Avenue to East Aurora Avenue, no parking any time.

Sec. 114-2682. Eighth Street--Park Street to Aurora Avenue.

~~Eighth Street, on the west side, from Center Street to a point twenty-five feet south,~~

~~no parking any time.~~

~~———— Eighth Street, on the east side, from Center Street to a point thirty five feet south, no parking any time.~~

Eighth Street, on both sides, from Crocker Street to a point 50 feet south thereof, no parking any time.

Eighth Street, on the west side, from Crocker Street to a point 50 feet north thereof, no parking any time.

Eighth Street, on the west side, from a point 210 feet north of Crocker Street to a point 75 feet north thereof, no parking any time.

Eighth Street, on the east side, from Crocker Street to School Street, no parking any time.

Eighth Street, on the west side, from School Street to a point 50 feet south thereof, no parking any time.

Eighth Street, on the east side, from University Avenue to a point 125 feet south thereof, no parking any time.

Eighth Street, on the west side, from a point 310 feet south of University Avenue to Forest Avenue, no parking any time.

Eighth Street, on the east side from Indiana Avenue to a point 75 feet north thereof, no parking any time.

Eighth Street, on the west side, from College Avenue to a point 35 feet south thereof, commercial loading zone.

Eighth Street, on the west side, from a point 35 feet south of College Avenue to a point 20 feet south thereof, is designated a handicapped parking space and is subject to the same prohibition as is found in section 114-616(a) of this Code.

Eighth Street, on the east side, from Clark Street to a point 200 feet south of College Avenue, passenger loading and unloading.

Eighth Street, on the east side, from College Avenue to a point 140 feet south thereof, no stopping or standing.

Eighth Street, on the east side, from a point 140 feet south of College Avenue to a point 250 feet south thereof, bus loading and unloading.

Eighth Street, on the west side, from a point 40 feet south of Franklin Avenue to Hickman Road, no parking any time.

Eighth Street, on the east side, from a point 50 feet south of Franklin Avenue to a point 50 feet north of Franklin Avenue, no parking any time.

Eighth Street, on the east side, from Lake Avenue to Oak Park Avenue, no parking any time.

Eighth Street, on both sides, from Euclid Avenue to a point 50 feet south thereof, no parking any time.

Eighth Street, on the west side, from Euclid Avenue to a point 50 feet north thereof, no parking any time.

Eighth Street, on the east side, from Euclid Avenue to Aurora Avenue, no parking any time.

Sec. 114-2735. ~~Thirteenth Street—Cherry Street to Mulberry Street~~ Repealed by Ord. No. 14,---

~~Thirteenth Street, on the east side, from Cherry Street to a point 25 feet north~~

thereof, no parking any time.

Sec. 114-2739. ~~Thirteenth Street—Grand Avenue to High Street~~Repealed by Ord. No. 14,---

~~Thirteenth Street, on the east side, from Grand Avenue to a point 45 feet north thereof, no parking any time.~~

~~————Thirteenth Street, on the east side, from a point 45 feet north of Grand Avenue to High Street, no parking 10:00 a.m. to 7:00 a.m.~~

~~————Thirteenth Street, on the west side, from Grand Avenue to a point 75 feet south of High Street, no parking 10:00 a.m. to 7:00 a.m.~~

~~————Thirteenth Street, on the west side, from High Street to a point 75 feet south thereof, no parking any time.~~

~~————Thirteenth Street, on the east side, from High Street to a point 40 feet south thereof, no parking any time.~~

Sec. 114-2751. ~~Fourteenth Street—High Street to Woodland Avenue~~Repealed by Ord. No. 14,---

~~Fourteenth Street, on the east side, from High Street to a point 50 feet north thereof, no parking any time.~~

Sec. 114-2823. Twenty-fourth Street--Ingersoll Avenue to Bennett Avenue.

Twenty-fourth Street, on the east side, from Ingersoll Avenue to Olive Street, no parking any time.

Twenty-fourth Street, on the west side, from Ingersoll Avenue to a point 200 feet north of Woodland Avenue, no parking any time.

Twenty-fourth Street, on the east side, from Rollins Avenue to Cottage Grove Avenue, no parking any time.

Twenty-fourth Street, on the west side, from a point 50 feet south of Pleasant Street to a point 50 feet north of Pleasant Street.

Twenty-fourth Street, on the west side, from a point 50 feet south of Center Street to a point 50 feet north of Center Street.

Twenty-fourth Street, on the west side, from a point 50 feet south of Rollins Avenue to a point 50 feet north of Rollins Avenue.

Twenty-fourth Street, on the west side, from Olive Street north to the dead end at I-235, no parking any time.

Twenty-fourth Street, on both sides, from a point 50 feet south of Drake Park Avenue to a point 50 feet north of Drake Park Avenue.

Twenty-fourth Street, on the east side, from University Avenue to a point 50 feet south thereof, no parking any time.

Twenty-fourth Street, on the east side, from a point 160 feet south of University Avenue to a point 110 feet south thereof, two-hour parking, 9:00 a.m. to 4:00 p.m.

Twenty-fourth Street, on the east side, from a point 270 feet South of University Avenue to a point 293 feet south thereof, is designated a handicapped parking space and is subject to the same prohibition as is found in section 114-616(a) of this Code.

Twenty-fourth Street, on the west side, from University Avenue to a point 260 feet south thereof, two-hour parking, 9:00 a.m. to 4:00 p.m.

Twenty-fourth Street, on the east side, from University Avenue to a point 50 feet north thereof, no parking any time.

Twenty-fourth Street, on the west side, from University Avenue to a point 205 feet south of Carpenter Avenue, no parking any time.

Twenty-fourth Street, on the east side, from Carpenter Avenue to a point 100 feet north thereof, no parking any time.

Twenty-fourth Street, on the east side, from a point 250 feet north of University Avenue to a point 50 feet north thereof, Loading Zone.

Twenty-fourth Street, on the east side, from a point 300 feet north of University Avenue to Carpenter Avenue, no parking any time.

Twenty-fourth Street, on the west side, from a point 155 feet south of Carpenter Avenue to a point 50 feet south thereof, two-hour parking.

Twenty-fourth Street, on the west side, from a point 25 feet south of Carpenter Avenue to a point 120 feet south thereof, reserved parking for marked police vehicles only.

Twenty-fourth Street, on the west side, from Carpenter Avenue to a point 35 feet south thereof, no parking any time.

Twenty-fourth Street, on the west side, from Forest Avenue to a point 100 feet north thereof, no parking any time.

Twenty-fourth Street, on the west side, from Clark Street to Twenty-fourth Drive, no parking any time.

Twenty-fourth Street, on the east side, from a point 50 feet south of Clark Street to a point 53 feet north of Clark Street, no parking any time.

Twenty-fourth Street, on the eastwest side, from Forest Avenue to Clark Street, no parking any time.

Twenty-fourth Street, on the east side, from a point 50 feet south of Twenty-fourth Drive to a point 50 feet north of Twenty-fourth Drive, no parking any time.

Twenty-fourth Street, on the west side, from College Avenue to a point 95 feet north thereof, no parking any time.

Twenty-fourth Street, on the east side, from College Avenue to a point 50 feet south thereof, no parking any time.

Twenty-fourth Street, on the east side, from Twenty-fourth Drive to a point 500 feet north of Franklin Avenue, no parking any time.

Twenty-fourth Street, on the east side, from Hickman Road to Bennett Avenue, no parking any time.

Twenty-fourth Street, on the west side, from a point 100 feet south of Holcomb Avenue to a point 100 feet north of Holcomb Avenue, no parking any time.

Sec. 114-2921. Forty-first Street--Grand Avenue to north city limits.

Forty-first Street, on the east side, from Grand Avenue to Ingersoll Avenue, no parking any time.

Forty-first Street, on the east side, from Ingersoll Avenue to a point 30 feet north thereof, no parking any time.

Forty-first Street, on the west side, from Ingersoll Avenue to Center Street, no parking any time.

Forty-first Street, on the east side, from Crocker Street to a point 50 feet south thereof, no parking any time.

Forty-first Street, on the east side, from University Avenue to Forest Avenue, no parking any time.

Forty-first Street, on the west side, from University Avenue to a point 125 feet north thereof, no parking any time.

Forty-first Street, on the west side, from a point 125 feet north of University Avenue to a point 100 feet south of Forest Avenue, no parking 8:00 a.m. to 4:00 p.m., Friday.

Forty-first Street, on the west side, from a point 375 feet north of University Avenue to a point 125 feet north thereof, no parking any time.

Forty-first Street, on the west side, from a point 775 feet north of University Avenue to a point 125 feet north thereof, no parking any time.

Forty-first Street, on the west side, from Forest Avenue to a point 100 feet south thereof, no parking any time.

Forty-first Street, on the east side, from a point 50 feet south of Northwest Drive to a point 75 feet north of Northwest Drive, no parking any time.

Forty-first Street, on the west side, from Forest Avenue to Beaver Avenue, no parking any time.

Forty-first Street, on the east side, from a point 100 feet south of College Avenue to a point 100 feet north of College Avenue, no parking any time.

Forty-first Street, on the east side, from Germania Drive to a point 85 feet south thereof, no parking any time.

Forty-first Street, on the east side, from Beaver Avenue to Northwest Drive, no parking any time.

Forty-first Street, on the east side, from Douglas Avenue to a point 50 feet north thereof, no parking any time.

Forty-first Street, on the west side, from Douglas Avenue to Shawnee Avenue, no parking any time.

Forty-first Street, on the west side, from Aurora Avenue to a point 730 feet north thereof, no parking any time.

Forty-first Street, on the east side, from Aurora Avenue to a point 50 feet north thereof, no parking any time.

Sec. 114-3076.05. ~~Cherry Street--Twelfth Street to Thirteenth Street~~Repealed by Ord. No. 14,---

~~Cherry Street, on the north side, from Twelfth Street to a point 25 feet west thereof, no parking any time.~~

~~Cherry Street, on both sides, from a point 25 feet west of Twelfth Street to Thirteenth Street, no parking 10:00 p.m. to 7:00 a.m.~~

~~Cherry Street, on the south side, from Twelfth Street to a point 50 feet west thereof, no parking any time.~~

Sec. 114-3109. County Line Road--South Union Street to ~~west city limits~~Fleur Drive.

County Line Road, on the north side, from Southwest Ninth Street to ~~the west city~~

~~limits~~ Fleur Drive, no parking any time.

Sec. 114-3137.05. Dart Way—Southwest Ninth Street to dead end west of Southwest Ninth Street.

Dart Way, on the north side, from Southwest Ninth Street to a point 870 feet west thereof, no parking any time.

Dart Way, on the south side, from Southwest Ninth Street to a point 600 feet west thereof, no parking any time.

Sec. 114-3166.05. Eagle Point Court—Grand River Drive to the dead end north of Grand River Drive.

Eagle Point Court, on the west side, Grand River Drive to and including the cul-de-sac north thereof, no parking any time.

Sec. 114-3171.05. Echo Valley Drive—Fleur Drive to west city limits.

Echo Valley Drive, on the north side, from Fleur Drive to the west city limits, no parking any time.

Sec. 114-3196. Filmore Street--East River Drive to East Thirteenth Street.

~~Filmore Street, on both sides, from East River Drive to East Sixth Street, no parking any time.~~

Filmore Street, on the south side, from ~~East Seventh Street~~ Pennsylvania Avenue to East Ninth Street, no parking any time.

Filmore Street, on the north side, from East Ninth Street to a point 50 feet west thereof, no parking any time.

~~Filmore Street, on the north side, from Pine Street to a point 40 feet west thereof, no parking any time.~~

Filmore Street, on the north side, from Pennsylvania Avenue to a point 75 feet east thereof, no parking any time.

Filmore Street, on the north side, from East Ninth Street to East Thirteenth Street, no parking any time.

Sec. 114-3267. East Grand Avenue--~~Watson Powell Jr Way~~ Des Moines River to Robert D Ray Drive.

East Grand Avenue, on the north side, from Robert D Ray Drive to a point 125 feet west thereof, no parking any time.

East Grand Avenue, on the south side, from Robert D Ray Drive to a point 87 feet west thereof, no parking any time.

East Grand Avenue, on the south side, from a point 87 feet west of Robert D Ray Drive to a point 50 feet west thereof, two-hour parking 8:00 a.m. to 6:00 p.m.

East Grand Avenue, on the south side, from a point 137 feet west of Robert D Ray Drive to a point 55 feet west thereof, no parking any time.

Sec. 114-3276. Grandview Avenue--Cornell Street to east city limits.

Grandview Avenue, on the north side, from Cornell Street to East ~~Fourteenth~~Thirteenth Street, no parking any time.

Grandview Avenue, on the south side, from Cornell Street to a point 60 feet east thereof, no parking any time.

Grandview Avenue, on the south side, from a point 50 feet west of East Ninth Street to a point 50 feet east of East Ninth Street, no parking any time.

Grandview Avenue, on the south side, from ~~a point 75 feet east of~~ East Thirteenth Street to a point 75 feet west of East Thirteenth Street, no parking any time.

~~Grandview Avenue, on the south side, from East Fourteenth Street to a point 100 feet west thereof, no parking any time.~~

Grandview Avenue, on the north side, from East Twenty-fifth Street to East Twenty-ninth Street, no parking any time.

Grandview Avenue, on the south side, from East Twenty-fifth Street to a point 55 feet east thereof, no parking any time.

Grandview Avenue, on the north side, from East Twenty-ninth Court to East Thirtieth Street, no parking any time.

Grandview Avenue, on the south side, from East Forty-second Street to a point 60 feet east thereof, no parking any time.

Grandview Avenue, on the north side, from the dead end east of East Forty-second Street to a point 90 feet west thereof, no parking Wednesday, 7:00 a.m. to 5:00 p.m.

Grandview Avenue, on the south side, from the dead end east of East Forty-second Street to a point 65 feet west thereof, no parking Wednesday, 7:00 a.m. to 5:00 p.m.

~~Sec. 114-3283. Gregory Lane--Dead end east of Southwest Sixtieth Street to Southwest Sixty-first Street~~Repealed by Ord. No. 14,---

~~Gregory Lane, on the north side, from a point 150 feet east of Southwest Sixtieth Street to Southwest Sixty-first Street, no parking any time.~~

~~Sec. 114-3284. Grove Street--Ninth Street to Tenth Street~~Repealed by Ord. No. 14,---

~~Grove Street, on the north side, from Ninth Street to Tenth Street, no parking any time.~~

Sec. 114-3288. Hart Avenue--South Union Street to Southeast Thirty-first Street.

Hart Avenue, on the north side, from South Union Street to Southeast Eighth Street, no parking any time.

Hart Avenue, on the north side, from Southeast Fourteenth Street to a point 50 feet east thereof, no parking any time.

Hart Avenue, on the south side, from Southeast Fourteenth Street to the dead end east of Southeast Fourteenth Street, no parking any time.

Hart Avenue, on the south side, from Indianola Avenue to Southeast Twenty-fourth Court, no parking any time.

Hart Avenue, on the north side, from Southeast Twenty-fourth Court to the dead end east of Southeast Twenty-fifth Street, no parking any time.

Hart Avenue, on the south side, from Southeast Twenty-ninth Court to Southeast Thirty-first, no parking any time.

Hart Avenue, on the north side, from Southeast Thirty-third Street to Southeast Thirty-fourth Street, no parking any time.

Hart Avenue, on the north side, from Sterling Trace to Southeast Thirty-sixth Street, no parking any time.

Sec. 114-3288.5. ~~East Hart Avenue Indianola Avenue to East City Limits~~ Repealed by Ord. No. 14,---

~~East Hart Avenue, on the north side, from Southeast Thirty-third Street to Southeast Thirty-fourth Street, no parking any time.~~

~~East Hart Avenue, on the north side, from Sterling Trace to Southeast Thirty-sixth Street, no parking any time.~~

Sec. 114-3466. Market Street--Southwest Water Street to Southwest Sixth Street.

Market Street, on the south side, from a point 135 feet west of Southwest Water Street to a point forty feet west thereof, loading zone.

Market Street, on the south side, from Southwest Second Street to a point 22 feet west thereof, no parking any time.

Market Street on the south side, from a point 135 feet west of Southwest Second Street to a point 55 feet west thereof, no parking any time.

Market Street, on the north side, from Southwest Water Street to Southwest Third Street, no parking 7:00 a.m. to 6:00 p.m., Monday through Friday.

Market Street, on the south side, from Southwest Fourth Street, to a point 25 feet west thereof, no parking any time.

Market Street, on the north side, from Southwest Fourth Street, to a point 25 feet west thereof, no parking any time.

Market Street, on the south side, from Southwest Fifth Street to a point 25 feet east thereof, no parking any time.

Market Street, on the north side, from a point 165 feet west of Southwest Fourth Street to a point 40 feet west thereof, no parking any time.

Market Street, on the north side, from Southwest Fifth Street to a point 25 feet east thereof, no parking any time.

Sec. 114-3503. ~~MTA Lane Southwest Ninth Street to dead end west of Southwest Ninth Street~~ Repealed by Ord. No. 14,---

~~MTA Lane, on the north side, from Southwest Ninth Street to a point 870 feet west thereof, no parking any time.~~

~~MTA Lane, on the south side, from Southwest Ninth Street to a point 600 feet west~~

~~thereof, no parking any time.~~

Sec. 114-3569. ~~Pine Street—Filmore Street to East University Avenue~~Repealed by Ord. No. 14,---

~~Pine Street, on the west side, from Filmore Street to East University Avenue, no parking any time.~~

Sec. 114-3602.1. River Ridge Road--Dead end north of East King Avenue to dead end south of Riverwoods Avenue.

~~River Ridge Road, on the south side, from the dead end north of East King Avenue to the dead end south of Riverwoods Avenue, no parking any time.~~

River Ridge Road, on the south side, from the dead end south of Riverwoods Avenue to King Avenue, no parking any time.

River Ridge Road, on the west side, from King Avenue to the dead end north of River Meadows Drive, no parking any time.

Sec. 114-3602.05. River Meadows Drive—King Avenue to River Ridge Road.

River Meadows Drive, on the west side, from King Avenue to River Ridge Road, no parking any time.

Sec. 114-3605.06. Robert D Ray Drive--East Grand Avenue to Filmore Street.

Robert D Ray Drive, on the east side, from East Grand Avenue to Des Moines Street, no parking any time.

Robert D Ray Drive, on the west side, from East Grand Avenue to a point 40 feet north thereof, no parking any time.

Robert D Ray Drive, on the west side, from Des Moines Street to a point 25 feet north thereof, commercial loading zone.

Robert D Ray Drive, on the west side, from a point 115 feet north of Des Moines Street to a point 45 feet north thereof, commercial loading zone.

Robert D Ray Drive, on the west side, from a point 370 feet north of Des Moines Street to a point 50 feet north thereof, no parking any time.

Robert D Ray Drive, on the east side, from Des Moines Street to a point 525 feet north thereof, no parking any time.

Robert D Ray Drive, on the west side, from a point 190 feet north of Des Moines Street to a point 290 feet north thereof, official city vehicles.

Robert D Ray Drive, on the west side, from a point 480 feet north of Des Moines Street to a point 100 feet north thereof, no parking any time.

Robert D Ray Drive, on the east side, from ~~East Grand Avenue~~Des Moines Street to FilmoreEast Sixth Street, no parking any time.

Sec. 114-3629.1. Shadow Creek Lane--~~East King Avenue to cul-de-sac south~~Cul-de-sac south of Riverwoods Avenue to River Ridge Road.

Shadow Creek Lane, on the west side, from East King Avenue to and including the cul-de-sac south of Riverwoods Avenue, no parking any time.

Shadow Creek Lane, on the west side, from King Avenue to River Ridge Road, no parking any time.

Sec. 114-3761.01. ~~Watson Powell Jr Way Grand Avenue to Second Avenue~~Repealed by Ord. No. 14,---

~~Watson Powell Jr Way, on both sides, from Grand Avenue to Second Avenue, no parking any time.~~

Sec. 114-3775.5. ~~Whispering Ridge Drive--King Avenue to dead end north of King Avenue.~~

Whispering Ridge Drive, on the west side, from King Avenue to the dead end north of King Avenue, no parking any time.

Sec. 114-3873. Fifth Avenue--Grand Avenue to Watson Powell Jr Way.

Fifth Avenue, on the east side, parking meter 5-501, two-hour meter, 9:00 a.m. to 6:00 p.m., is designated a handicapped parking space and is subject to the same prohibition as is found in subsection 114-616(a) of this chapter.

Fifth Avenue, on the east side, parking meter 5-509, two-hour meter, 9:00 a.m. to 6:00 p.m., is designated a handicapped parking space and is subject to the same prohibition as is found in subsection 114-616(a) of this chapter.

Fifth Avenue, on the east side, from a point 35 feet north of Grand Avenue to a point ~~50~~22 feet north thereof, two-hour meters, 9:00 a.m. to 6:00 p.m.

Fifth Avenue, on the east side, from a point 85 feet north of Grand Avenue to a point 100 feet north thereof, two-hour meters, 9:00 a.m. to 6:00 p.m.

Fifth Avenue, on the east side, from a point 365 feet north of Grand Avenue to Watson Powell Jr Way, two-hour meters, 9:00 a.m. to 6:00 p.m.

Fifth Avenue, on the east side, from a point ~~85~~95 feet north of Grand Avenue to a point ~~100~~85 feet north thereof, two-hour meters, 8:00 a.m. to 6:00 p.m.

Fifth Avenue, on the east side, from a point 315 feet north of Grand Avenue to a point 40 feet south of Watson Powell Jr Way, two-hour meters, 9:00 a.m. to 6:00 p.m.

Fifth Avenue, on the west side, from a point 150 feet north of Grand Avenue to a point 30 feet south of Watson Powell Jr Way, four-hour meters, 9:00 a.m. to 6:00 p.m.

Sec. 114-3926. Market Street--Southwest Water Street to Southwest Third Street.

Market Street, on the south side, from Southwest Water Street to a point 135 feet west thereof, ten-hour meters, 8:00 a.m. to 6:00 p.m.

Market Street, on the south side, from a point 175 feet west of Southwest Water

Street to Southwest Second Street, ten-hour meters, 8:00 a.m. to 6:00 p.m.

Market Street, on the south side, from a point 22 feet west of Southwest Second Street to a point 110 feet west thereof, ten-hour meters, 8:00 a.m. to 6:00 p.m.

Market Street, on the south side, from a point 187 feet west of Southwest Second Street to Southwest Third Street, ten-hour meters, 8:00 a.m. to 6:00 p.m.

Sec. 114-3966. Fifth Avenue--Watson Powell Jr Way to Park Street.

Fifth Avenue, on the west side, from a point ~~30~~⁵⁵ feet north of Watson Powell Jr Way to Park Street, four-hour meters, 8:00 a.m. to 6:00 p.m.

Fifth Avenue, on the east side, from a point 20 feet north of Watson Powell Jr Way to a point ~~120~~¹¹⁰ feet north thereof, four-hour meters, 8:00 a.m. to 6:00 p.m.

Fifth Avenue, on the east side, from a point ~~145~~¹³⁰ feet north of Watson Powell Jr Way to a point 90 feet north thereof, four-hour meters, 8:00 a.m. to 6:00 p.m.

Sec. 114-3967. Fifth Avenue--Park Street to School Street.

Fifth Avenue, on the west side, from a point 20 feet north of Park Street to a point 20 feet south of Center Street, four-hour meters, 8:00 a.m. to 6:00 p.m.

Fifth Avenue, on the east side, from a point 20 feet north of Park Street to a point 40 feet south of Center Street, four-hour meters, 8:00 a.m. to 6:00 p.m.

Fifth Avenue, on the west side, from a point ~~290~~⁴⁰ feet south of ~~School~~^{Crocker} Street to a point 50 feet north of Center Street, ten-hour meters, ~~9:00~~^{8:00} a.m. to 6:00 p.m.

Sec. 114-3972. ~~Eighth Street--Park Street to Center Street~~ Repealed by Ord. No. 14,---

~~Eighth Street, on the west side, from Park Street to a point 25 feet south of Center Street, ten-hour meters, 8:00 a.m. to 6:00 p.m.~~

~~— Eighth Street, on the east side, from Park Street to a point 35 feet south of Center Street, ten-hour meters, 8:00 a.m. to 6:00 p.m.~~

Sec. 114-3989. ~~Thirteenth Street--Cherry Street to Mulberry Street~~ Repealed by Ord. No. 14,---

~~Thirteenth Street, on the west side, from Cherry Street to Mulberry Street, ten-hour meters, 8:00 a.m. to 6:00 p.m.~~

~~— Thirteenth Street, on the east side, from Mulberry Street to a point 25 feet north of Cherry Street, ten-hour meters, 8:00 a.m. to 6:00 p.m.~~

Sec. 114-3996. ~~Fourteenth Street--High Street to Woodland Avenue~~ Repealed by Ord. No. 14,---

~~Fourteenth Street, on the east side, from a point 50 feet north of High Street to Woodland Avenue, ten-hour meters, 8:00 a.m. to 6:00 p.m.~~

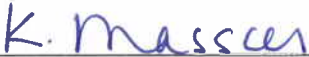
~~— Fourteenth Street, on the west side, from High Street to Woodland Avenue, ten-hour meters, 8:00 a.m. to 6:00 p.m.~~

Sec. 114-4007. ~~Cherry Street—Twelfth Street to Thirteenth Street~~Repealed by Ord. No. 14,---

~~Cherry Street, on the south side, from a point 50 feet west of Twelfth Street to Thirteenth Street, ten hour meters, 8:00 a.m. to 6:00 p.m.
—Cherry Street, on the north side, from a point 25 feet west of Twelfth Street to Thirteenth Street, ten hour meters, 8:00 a.m. to 6:00 p.m.~~

Sec. 2. This ordinance shall be in full force and effect from and after its passage and publication as provided by law.

FORM APPROVED:



Katharine Massier
Assistant City Attorney