

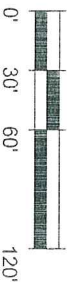
**Beaverdale Mixed Use**  
 Rice Development Partners

Des Moines, Iowa / September 24, 2007



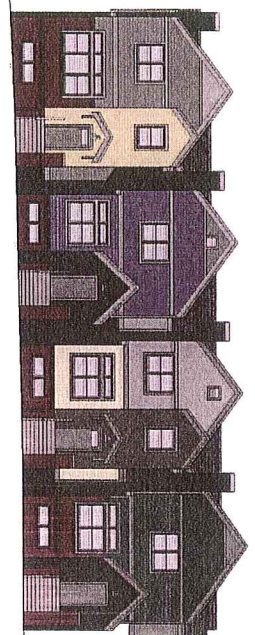
NORTH

SCALE: 1" = 60"

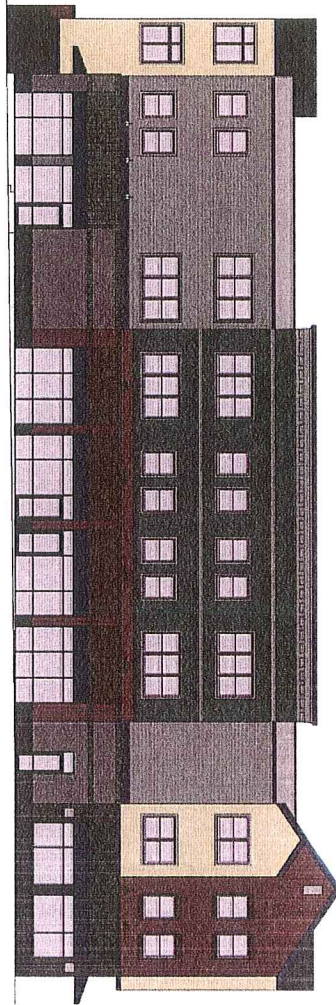


**Final Master Plan**

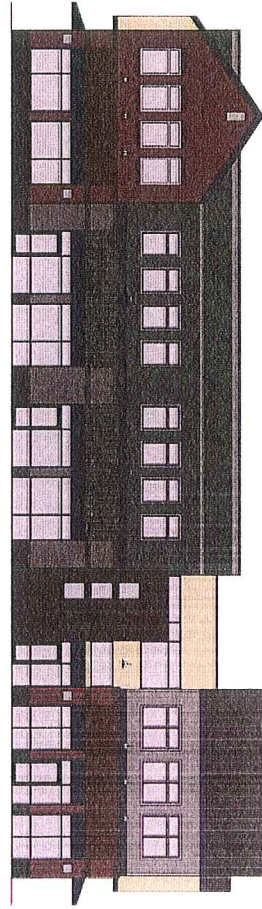
 **BRIAN CLARK + ASSOCIATES**  
 LANDSCAPE ARCHITECTURE | PLANNING | URBAN DESIGN



1 WEST ELEVATION - RH2



1 BEAVER AVENUE FRONT ELEVATION



1 ADAMS STREET FRONT ELEVATION



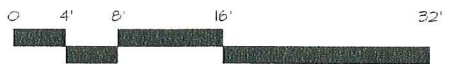
PRELIMINARY - NOT FOR CONSTRUCTION

Value Studies VS-1	DATE: 2006-32 DRAWN BY: [blank] CHECKED BY: [blank]	<b>smith metzger</b> architects 2155 grand avenue, suite 200 denver, color 80202 303.241.2111 fax: 303.441.0033 email: adm@smithmetzger.com	CONSULTANTS: STRUCTURAL ENGINEER: Shuck Britson Consulting Engineers LANDSCAPE ARCHITECT: Brian Clark and Associates CIVIL ENGINEER: Cooper-Crawford Engineering	2006-32
	BEAVERDALE MIXED USE		Value Studies	



1 WEST ELEVATION - RH2

SCALE: 1/8" = 1'-0"



4 SOUTH ELEVATION

SCALE: 1/8" = 1'-0"