

★ **Roll Call Number**

Agenda Item Number

21

Date December 8, 2008

Receipt of the Roosevelt Cultural District Vision Committee Report & Recommendations as presented to the Roosevelt Cultural District Board

Moved by _____ to receive and file the attached report

COUNCIL ACTION	YEAS	NAYS	PASS	ABSENT
COWNIE				
COLEMAN				
HENSLEY				
KIERNAN				
MAHAFFEY				
MEYER				
VLASSIS				
TOTAL				

CERTIFICATE

I, DIANE RAUH, City Clerk of said City hereby certify that at a meeting of the City Council of said City of Des Moines, held on the above date, among other proceedings the above was adopted.

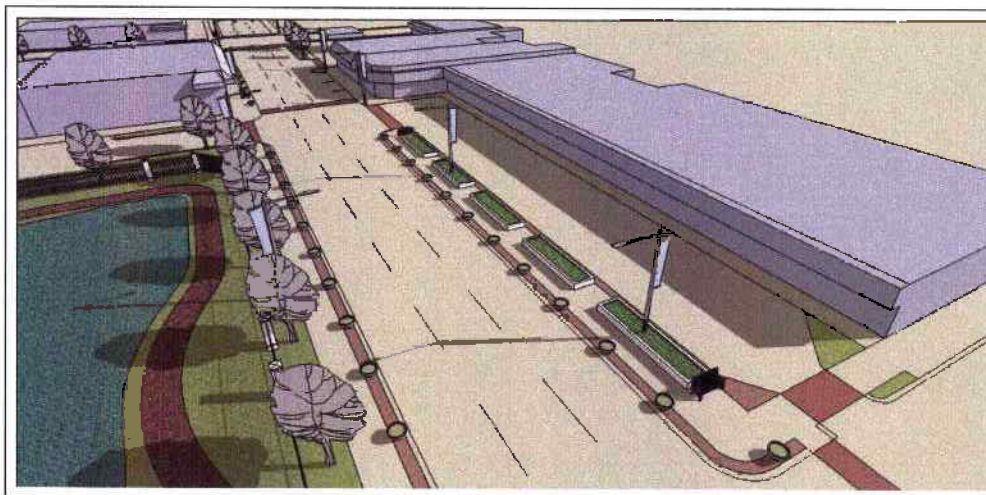
IN WITNESS WHEREOF, I have hereunto set my hand and affixed my seal the day and year first above written.

MOTION CARRIED

APPROVED

Mayor

City Clerk



**Roosevelt Cultural District
Vision Committee**

Report & Recommendations

Presented to
Roosevelt Cultural District Board

September 23, 2008

Roosevelt Cultural District Vision Committee Members

- Brian Browning, Community Representative
- Mary Brubaker, Ingersoll Park Neighborhood Association
- Kathie Danielson, Roosevelt High School Principal
- Robert Gernes, Waveland Park Neighborhood Association
- Kimberly Hansen, North of Grand Neighbors
- Rod McCullough, Des Moines Playhouse
- Anita Micich, Roosevelt High School Principal
- Susan Noland, Susan Noland Designs in Gold
- Diane Proctor, Community Representative
- Mary Reid, North of Grand Neighbors
- Tim Schott, Hubbell Elementary School Principal
- Mike Simonson, The Shops at Roosevelt
- Sheena Thomas, Elements, Ltd.

Purpose of Vision Committee

The Roosevelt Cultural District Vision Committee was created by the RCD Board and first convened in September 2006. Its purpose as defined by the Board is to

Develop an overall plan or sense of complete design for the Roosevelt Cultural District.

Focus of Vision Committee

The Vision Committee determined that its goal was to

Enhance the RCD for district properties and adjoining neighborhoods.

To accomplish that goal, the committee adopted three objectives, all of equal importance:

Objective 1: Improve the appearance and perception of the RCD

Objective 2: Accommodate existing levels of vehicular traffic

Objective 3: Increase safety for pedestrians

The Vision Committee decided that to enhance public perception and awareness of the Roosevelt Cultural District, it would be essential to improve the appearance of the District's primary street, 42nd Street. The committee agreed to concentrate on 42nd Street initially and look at the remainder of the District in subsequent phases. The committee thus focused on improvements along 42nd Street and three adjoining side streets: Rollins Avenue, Chamberlain Avenue, and Crocker Street.

Existing Conditions

42nd Street Appearance. In its current state the 42nd Street right-of-way between the freeway and Chamberlain Avenue is a rather desolate four-lane concrete strip. Even as it narrows to three lanes north of Chamberlain Avenue, and then narrows again to two lanes north of Crocker Street, its main function is obviously to move vehicular traffic quickly through the area, without regard for aesthetics. The west side of 42nd Street is lined with utility poles carrying overhead electrical transmission lines and cable television distribution lines. No street trees are planted along either side of 42nd Street between the freeway and Crocker Street.

42nd Street Heavy Vehicular Traffic. In addition to being the District's primary street, 42nd Street is one of the city's major thoroughfares. It is very heavily traveled between the freeway and University Avenue, carrying over 16,000 vehicles per day*.

* City of Des Moines, 42nd Street/Kingman Boulevard Streetlight Study, October 2005. 42nd St. average 24 hour weekday count immediately south of Kingman Boulevard: southbound 8,418, northbound 7,941.

42nd Street Pedestrian Safety and Convenience. Pedestrian travel is promoted in the neighborhood. Hubbell Elementary School encourages its students to walk to and from school. Quite a few Roosevelt students also walk to and from school. And the Waveland Park Neighborhood Association's Action Plan designates the entire neighborhood as a pedestrian-friendly area. But pedestrian safety and convenience along 42nd between the freeway and Crocker Street is inconsistent. Pedestrian signals are installed at Center Street and Chamberlain Avenue. But neither signals nor crosswalks are in place at Crocker Street, where during their lunch break and after school significant numbers of Roosevelt students dodge traffic daily to reach the convenience and pizza stores on the east side of the street. Nor is there a crosswalk at 43rd and Chamberlain, which is along the designated safe route for Hubbell School children walking to and from school. Continuous sidewalk is in place along the west side of 42nd Street. But none exists on the east side of the street south of Chamberlain Avenue, where the apparent pedestrian route is the walkways immediately in front of the shops and the Playhouse. No signage or painted markings are in place there to guide pedestrians along that route. Therefore, pedestrians frequently walk along the narrow traffic island that separates the Shops at Roosevelt parking lot from 42nd Street.

Plan Elements

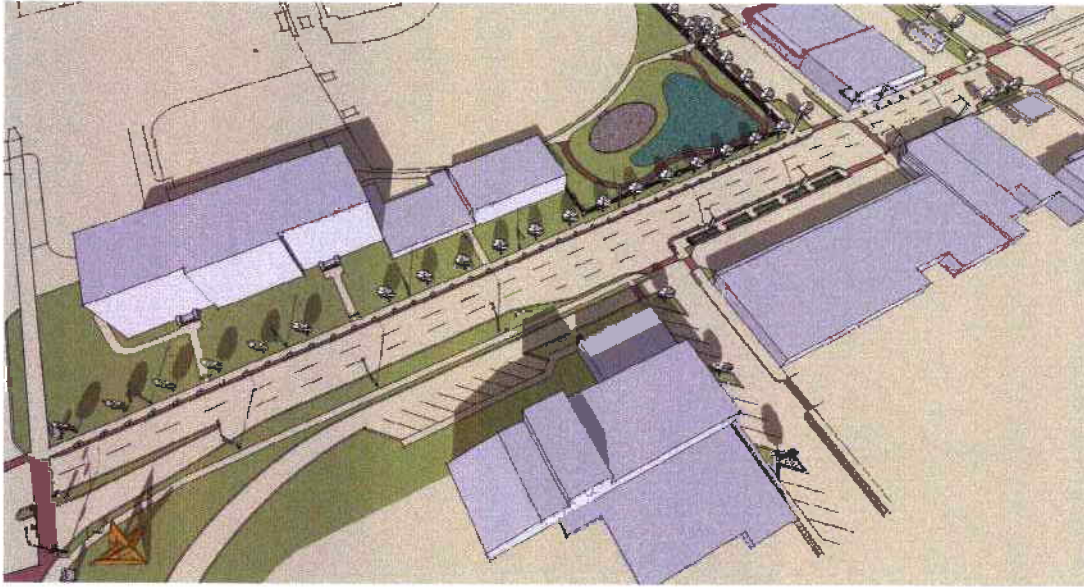
The Vision Committee proposes several **Plan Elements** to improve the appearance of 42nd Street, to enable it to continue to accommodate heavy vehicular traffic. These Plan Elements are described and illustrated on pages 4 through 6 of this report.

The Plan Elements are described area by area as follows:

- 42nd Street between the freeway and Crocker Streets
- Chamberlain Avenue / Crocker Street route
- Chamberlain Avenue east of 43rd Street
- Rollins Avenue
- Hubbell School Property

Vision Committee Recommendation

The Vision Committee further proposes that the RCD Board adopt these recommended Plan Elements and work with the City of Des Moines to begin implementation.



42nd Street: Center Street at far left, Crocker Street at far right

42nd Street

- Locate a major focal point at the northeast corner of 42nd and the freeway for an RCD welcome and ID signage, and as a potential site for outdoor art.
- Locate an RCD welcome and ID signage at the southwest corner of 42nd and Crocker.
- Examine the potential for outdoor art location west of the fire station in the traffic island between freeway on- and off-ramps (not shown).
- Reconfigure 42nd Street between Crocker and Center as a three-lane street with one lane northbound, one lane southbound, and a center turn lane.
- Retain the fourth lane in front of Hillyer's Cleaners as parallel parking space.
- Include a short fourth lane in front of the Playhouse to accommodate right-hand turns onto Rollins and into the Shops at Roosevelt front parking lot.
- Convert the easternmost lane of 42nd between Chamberlain and Center into a wide sidewalk and planting spaces for trees, grass, and flowerbeds.
- Add a wide sidewalk to the east side of the street between Rollins and the freeway off-ramp.
- Widen the sidewalk on the west side of the street in front of Hubbell Elementary School.
- Retain the pedestrian crossing signal at 42nd and Chamberlain.
- Plant street trees along both sides of the street, but delay planting along the Playhouse frontage until it is determined whether potential renovation to that facility will take place.
- Set freestanding planters on both sides of the street between the curb and sidewalk to separate pedestrians from vehicular traffic.
- Replace the narrow strip of turf along the west side of the street between the curb and sidewalk with textured paving.
- Bury the overhead electrical and cable TV lines between the freeway and Crocker.



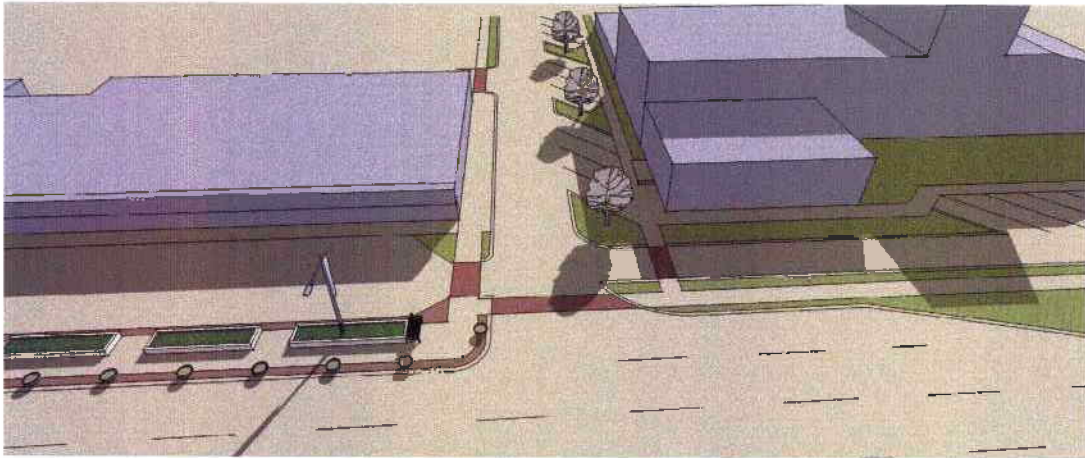
Chamberlain and Crocker Looking West: Chamberlain at left; Crocker at right

Chamberlain Avenue / Crocker Street Route

- Re-establish the historic Chamberlain-Crocker alignment as a two-way street to provide a continuous route connecting neighborhoods east and west of 42nd Street.
- Add a pedestrian crosswalk table across Crocker Street in front of the Roosevelt Manor apartments.
- Reconfigure the Chamberlain-Crocker intersection in front of Roosevelt Manor apartments, bumping out the curb on the south side of the street to narrow the intersection and add green space.
- Add street trees along Crocker Street west of 42nd Street.
- Study the necessity/desirability for a signalized intersection at 42nd and Crocker, after it is determined how the new traffic signals at 42nd and Kingman Blvd. modify southbound 42nd Street traffic flow.

Chamberlain Avenue east of 43rd Street

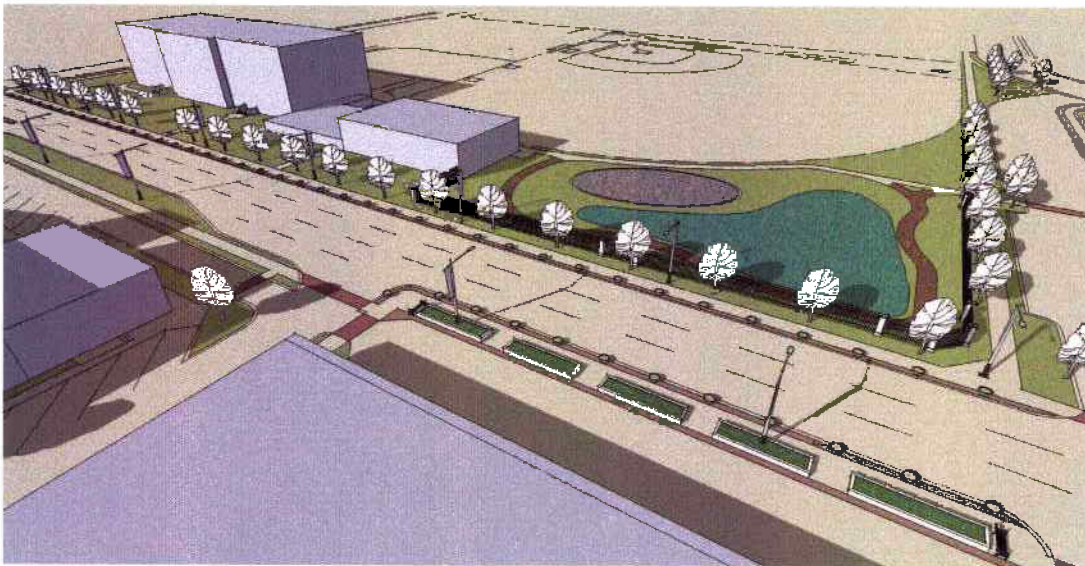
- Relocate the mid-block pedestrian crosswalk slightly east to align with walk leading into Hubbell School property and add curb bump-outs for pedestrian safety.
- Reconfigure the parking lot entry drives west of Boulevard Sports to put them at a safe distance from the relocated crosswalk.
- Keep the current configuration of Chamberlain Avenue between 42nd and 43rd as a two-way street with parallel parking along both sides.
- Reconfigure the Chamberlain-Crocker intersection so that Chamberlain east of 43rd Street forms a right-angled tee with the Chamberlain-Crocker realignment.
- Narrow Chamberlain at the east end to define parallel parking areas near 42nd Street and add green space.
- Add street trees along the south side of Chamberlain west of 42nd Street.



Rollins Avenue Looking East: Shops at Roosevelt at left; Playhouse at right

Rollins Avenue

- Retain the current one-way eastbound configuration.
- Add back-in diagonal parking stalls to the south side of the street.



Hubbell School: 42nd Street and Chamberlain Avenue frontages

Hubbell School Property

- Support school site committee efforts to improve playground north of new gym addition.
- Support school site committee efforts to convert the storm water detention basin near 42nd and Chamberlain to a rain garden.
- Support school site committee efforts to replace the chain link fence along 42nd and Chamberlain with a brick pier and wrought iron fence.
- Support school site committee efforts to add tree and shrub plantings to school grounds along 42nd Street.

City and Community Involvement

Vision Committee representatives presented its initial Plan Elements to various City of Des Moines officials, the general public, and several west side neighborhood associations. Committee members also discussed the Plan Elements with RCD merchants. Comments and concerns raised at these presentations resulted in modification of some initial Plan Elements to what is proposed in this report. Transcripts of the comments and concerns, letters of endorsement from neighborhood associations, and a petition signed by several neighborhood merchants are presented at the end of this report.

Meetings with City Officials

- Mayor Frank Cownie discussed the Plan Elements with the RCD Vision Committee at a meeting he attended on August 28, 2007.
- Councilwoman Christine Hensley discussed the Plan Elements with the RCD Vision Committee at meetings she attended on October 17, 2006 and May 29, 2007.
- City Traffic and Transportation Department head Gary Fox discussed the Plan elements on two occasions. He met with two members of the RCD Vision Committee on March 5, 2007; he also attended a Vision Committee meeting on May 29, 2007.
- One member of the RCD Vision Committee met with City Forester L G (Skip) Moore on August 29, 2007 to look over the area and discuss possibilities for street trees.

General Public Presentations of the Plan Elements

Comments received from people viewing a display of the Plan Elements are shown on the following pages.

- RCD Festival Week and Jazz in July performance, July 10, 2007
- RCD Festival Week, July 12, 2007

Neighborhood Association Presentations of the Plan Elements

Comments about the Plan Elements received from people attending various neighborhood associations are shown on the following pages.

- Drake Neighborhood Association board meeting, August 8, 2007
- Ingersoll Park Neighborhood general meeting, September 13, 2007
- Merle Hay Neighborhood Association board meeting, September 17, 2007
- North of Grand Neighbors board meeting, July 25, 2007
- North of Grand Neighbors general meeting, August 13, 2007
- Salisbury Oaks Neighborhood Association general meeting, August 22, 2007
- Waterbury Neighborhood Association board meeting, August 19, 2007
- Waveland Park Neighborhood Association board meeting, August 14, 2007
- Waveland Park Neighborhood Association general meeting, October 2, 2007

Neighborhood Association Endorsements

The RCD Vision Committee received endorsements from three neighborhood associations. Copies of the endorsement letters are presented on the following pages.

- Drake Neighborhood Association endorsement, dated August 13, 2007
- Ingersoll Park Neighborhood endorsement, (undated) received in September 2007
- North of Grand Neighbors endorsement, voice vote at July 25 meeting, no letter received

Local Merchants' Concerns

The RCD Vision Committee received a petition In September 2007 signed by several local merchants stating their concerns about some of the Plan Elements. A copy of the undated petition and signature sheet are presented on the following pages.

Comments from July 10 & 12 Open House During Festival Week			
Nice!			
Looks Good			
Trees are needed on the east side of 42nd street.			
Let's continue to move forward!			
A great improvement!			
Fantastic			
I can see some definite benefit for the community.			
OK. Looks Good.			
Keep going-Good beginning			
Add pedestrian-carried red flags in cylindrical tubes to E & W sides of 42nd at pedestrian crosswalk	Feel Roosevelt Shops are in danger of extinction, recommend improvements on 42nd St. first and ASAP.	Would like 'Shops' signs at entrance to street	Would insist on green space on 42nd by Shops. If it means giving up center median space by shops, would do it.
Slow the traffic down - Pronto!			
Trees are great.			
Support all except the one-way on Chamberlain			
Would oppose one-way Chamberlain & re-direct of traffic to Crocker unless all businesses agreed on Huge signage to make Bike World and Tailor visible - note that addition of trees along Hubbell yard would	Also need BIG WIDE PEDESTRIAN CROSSING W/FLASHING YELLOW LIGHT TO CROSS Crocker & Chamberlain.	Want Roosevelt H.S. to have community event signage so we can see plays, games, etc.	
Concern about increased fights, more Crocker traffic and student garbage disposal.			
Great ideas-will love to see it finished.	Need a fountain & pond @ 42nd & Interstate ramp.		
We need contributors.			
Good ideas. What about bicycle			
Very interesting plan.			
Comments from July 25 North of Grand Neighborhood Board of Directors			
Endorsed the plan.	Suggested contact with schools about bus accessibility.	Also, it was noted that combination light pole/planters (as opposed to two separate poles) on the east side of 42 nd could preclude the addition of trees at some point.	Hopeful that the bike/hike path would soon be installed on the north side of the 1235 sound wall from 42 nd to the pedestrian bridge.

Roosevelt Cultural District
Presentation to Drake Neighborhood Association Board Meeting
August 8, 2007, 7pm at Holiday Inn Express

Concept presented by Rod McCullough with assistance from Sheena Thomas, Tim Schott and Bob Gernes

The Board voted to endorse the concept as presented and will send a letter of endorsement to Rod McCullough or Sheena Thomas

Comments and Suggestions from Individual Board Members:

- Like the traffic calming aspects of the plan and the way it reduces confusion
- Will RCD be searching for grant money as a 501-C3 organization?
- Would like to have RCD ask DSM Traffic & Transportation Dept. to address confusing lane shift for westbound drivers heading west along Center Street from the westbound I-235 off-ramp.
- Current right turn on red from southbound 42nd Street to westbound I-235 on-ramp and Center Street may need to be modified because numerous school-age children cross there on the way to and from Roosevelt and Hubbell
- There could be possibility of working with Hubbell and Roosevelt schools to create a Children's Garden in the Hubbell North Field area.
- There may be a possibility of coordinating with Drake Neighborhood Association to use their Neighborhood Revitalization funds for certain streetscape improvements.

Roosevelt Cultural District Vision Committee
Presentation to Ingersoll Park Neighborhood General Meeting
September 13, 2007, 7 pm at Waveland Hall in Plymouth Church

Concept presented by Rod McCullough with assistance from Tim Schott and Bob Gernes

Comments and Suggestions from Neighborhood Association Members:

- There may be increased cross traffic at Crocker that will impact neighborhoods near Crocker east and west of 42nd Street
- How will this be funded? *(City street improvements done through capital improvements plan; non-city property improvements through efforts by property owners, including grants and donations, e.g. Hubbell play equipment by Hubbell PTA)*
- Will Chamberlain west of 43rd be two-way? *(Yes)*
- What is a cultural district? Is it a state or federal designation? *(Described cultural districts)*
- What's the process? What's holding this up? *(Described this as the very beginning of a process. 1st step is to gather public input at neighborhood meetings. Next step is probably to present the concept and public input comments to City Council; Council and City staff will then determine process from that point forward. The proposed improvements are a series of smaller, distinct projects that could be incorporated into the City's capital improvement plan over several years.)*
- Raised medians don't seem to be a good idea; paint would be better
- Traffic lights at Center, Crocker, Kingman, and University need to be sequenced

Roosevelt Cultural District
 Presentation to Merle Hay Neighborhood Association Board Meeting
 September 17, 2007, 6pm at Linthicum residence, 1505 Merle Hay Road

Concept presented by Bob Gernes

Comments and Suggestions from Individual Board Members:

- How will this be paid for? (*Public street improvements through City's capital improvements budgets; public streetscape improvements through combination of public funds, grants, fund-raising, and donations; non-city property through fund-raising, grants, and donations, e.g. Hubbell playground equipment by Hubbell PTA*)
- What shops will replace Reichardt's in Shops at Roosevelt?
- Thinks the 3-lane is a good idea since the westbound exit ramp's dedicated right-turn lane has been removed
- Some board members commented that the ideas were good and would benefit the neighborhoods, the west side, and the City.
- Questions about whether and when there will be a trail from 42nd east to the 40th St pedestrian bridge
- Will Chamberlain east of 43rd be one-way east or west? (*Could go either way*)
- Is this a neighborhood project? (*RCD is an overlay within two neighborhoods but is a separate entity*)
- When will the project start? (*Described the process as gathering and compiling public input; presenting concept and input to City; study and recommendations by Planning staff; action by City Council to accept or modify or reject; and if accepted, adding public projects to capital improvements plan and private projects seeking funding*)

Roosevelt Cultural District
Presentation to North of Grand Neighborhood Association General Meeting
August 13, 2007, 7pm at Grand Suites

Concept presented by Rod McCullough with assistance from Bob Gernes

Questions, Comments and Suggestions from Association Members:

- Will there be road closures during construction?
- How will the pedestrian bridge at 40th St connect to 42nd (*Discussed the new trail along the noise wall*)
- How much interaction is there among the shops in the area, and the schools and the Playhouse?
- When might Rollins be paved east of 41st St.?
- Are there places for benches? (*Yes; pointed out the Chamberlain-Crocker convergence as an example*)
- What is the Hubbell Rain Garden? (*Described the Rain Garden purpose.*)
- What about the art: Where does it come from and who decides? (*Pam Bookey attended a meeting and is aware of the concept.*)
- This is a wonderful idea that will calm down 42nd St traffic.
- Any thought about what goes in the medians? (*Not yet.*)
- The area needs a unified identity; it is now seen as an assemblage of independent units and not a single place.
- Is the Roosevelt lawn in the plan?
- Music Under the Stars may be looking for a new home, and the Roosevelt campus is being considered.
- Artwork could be embedded in the sidewalks.
- Benches provide resting places for older pedestrians who might need to stop a while.
- Crossing the 42nd Street bridge is scary, and I'd like to see improvements to make it feel safer.
- Expand the tree-planting and area identity east to 41st St., Rollins, and Crocker.
- Do you have a website?

Roosevelt Cultural District Vision Committee
August 20, 2007

Presentation to Waterbury Neighborhood Association Board
5 pm Sunday, August 19
5306 Grand Avenue

Concept presented by Bob Gernes

6 Board members present

Several board members voiced interest and support for the concept, but wanted to discuss it among themselves at a separate meeting prior to agreeing to endorse it.

Comments from Individual Board Members (and responses):

- Waterbury NH is supportive of the Roosevelt Cultural District as demonstrated by a donation to the RCD of _____. (He mentioned the amount but I don't remember – I think it was either \$100 or \$500).
- Where is RCD in the process? *(Making presentations to adjoining NH association boards and general meetings.)*
- Who with the City has seen this and what did they think? *(Gary Fox, Traffic Engineering, liked it. Christine Hensley, Ward 3 City Council rep., liked it and encouraged us to show it to neighborhood organizations and at public gatherings and ask for input.)*
- What other neighborhoods have you presented to so far? *(North of Grand Neighbors Board meeting and General meeting; Drake Neighborhood Board; Waveland Park Neighborhood Board. Drake and NOG voted to endorse; Waveland Park wanted to delay endorsement until after RCD had presented concept at their Fall general meeting.)*
- Have you had any opposition? *(Yes; Boulevard Sports likes neither the Chamberlain one-way east nor the prospect of trees along 42nd and Chamberlain.)*

Roosevelt Cultural District
Presentation to Waveland Park Neighborhood Association Board Meeting
August 14, 2007, 7pm at College Ave Christian Church

Concept presented by Rod McCullough with assistance from Tim Schott and Bob Gernes

The Board decided to wait until the results of the WPNA Fall general meeting to see whether or not to endorse the concept.

Later in the meeting the board asked the RCD to present the concept as part of the WPNA Fall general meeting program on future neighborhood streetscape improvement projects.

Questions, Comments and Suggestions from Individual Board Members:

- What will the width of the sidewalk be along east side of 42nd? (*Up to 8 ft is possible; 6 ft is more likely*)
- I would like to see RCD signage show up on the drawing.
- What are the traffic counts on 42nd Street?
- What about a pedestrian bridge across 42nd?
- What is the rationale for pedestrian crossing at Crocker? Would it replace the pedestrian signal at Chamberlain? (*Explained that the signal at Chamberlain would be converted to a pedestrian-activated light similar to those being installed on University Ave in front to Drake*)
- Back-in angle parking is safer for several reasons.
- Has Boulevard Sports been told of this? (*Yes. They didn't like it, primarily because of the one-way west. They also thought the trees along 42nd and Chamberlain would interfere with the view toward their store from 42nd Street.*)
- Will DSM Traffic Engineering accept the 42nd and Crocker 3 lanes? (*Yes. Gary Fox has seen the concept and approved of it.*)
- What funding sources will we use? (*As many as we can find, including Lillian Swartzell grant for trees along 42nd Street.*)
- Gary Fox has said that if NH groups take the initiative and raise funds, the City can match with street and utility work.
- Suggest that it's time to contact the DM Register Neighbors Section reporters to explain the plan.
- Has this been presented to the Traffic Safety Committee? (*No, but Gary Fox has seen it.*)
- Who in the City Administration has seen the concept? (*Christine Hensley and Gary Fox.*)

Roosevelt Cultural District
Presentation to Waveland Park Neighborhood Association General Meeting
October 2, 2007, 7pm at Northwest Community Center

Concept presented by Rod McCullough with assistance from Bob Gernes

Questions, Comments and Suggestions from Association Members:

- Concerned about parking lot access routes to Blvd Sports and other shops west of 42nd at Chamberlain
- Will Crocker Street be two way? [Yes]
- Supports idea of a cultural district
- We live at 900 43rd and we would be backing out of our driveway onto a much busier street
- What's the purpose for narrowing Chamberlain? [Traffic calming; More parking for businesses; Safer crossing for Hubbell students; More space to plant trees]
- Who will use additional parking on Chamberlain, students?
- Shops at Roosevelt are always fighting to keep [Playhouse] parking out of the front lot; maybe more Chamberlain parking would help
- Lots of trash/litter from Roosevelt kids along Chamberlain
- Should there be more trash receptacles in front of the shops along Chamberlain so the Roosevelt kids might throw less trash around?
- Is street parking at Chamberlain useful for Roosevelt evening activities?
- Are the Crocker street traffic lights a reality or on a wish list? [On a wish list]
- The street alignment geometry at Chamberlain/Crocker/43rd could be modified to sharpen the curb and slow traffic
- Would the stoplight at Crocker clog up traffic more on 42nd?
- I think one-way streets are confusing and may keep people away from the area
- Raised medians in 42nd will take away street area that could be better used for traffic, especially if the medians slow down emergency vehicles
- Should the short stretch of Chamberlain be closed altogether?
- Moving traffic onto Crocker will make a busy and dangerous place even more so
- All merchants fronting Chamberlain, most merchants west of 42nd, and some east of 42nd are opposed to traffic changes on Chamberlain



P.O. Box 41128
Des Moines, Iowa 50311
President: 255-9293
E-mail:
info@drakeneighborhood.org
Web:
www.drakeneighborhood.org

August 13, 2007

Rod McCullough
Roosevelt Cultural District
c/o The Des Moines Playhouse
831 42nd Street
Des Moines, Iowa 50312

Dear Mr. McCullough;

Thank you for taking the time to present the plans for the 42nd street corridor at the recent Drake Neighborhood Board meeting. The Board of the Drake Neighborhood Association voted to support the Roosevelt Cultural Districts preliminary plans to improve the traffic flow and streetscape along 42nd Street

We understand this is a preliminary plan and will need to be presented and approved by various city boards in the future. Please let us know if you need any additional assistance with this matter.

Yours Truly,

Martha (Marty) Schmitt
President
Drake Neighborhood Association

CC: Sheena Thomas

21

Roosevelt Cultural District Vision Committee
Bob Gemes
1011 45th Street
Des Moines, IA 50311

Dear Bob,

The Ingersoll Park Neighborhood Association Board of Directors and the general membership have had an opportunity to review the traffic and streetscape changes proposed for the area surrounding the Roosevelt Shopping Center. The Board and members overwhelmingly approve the design concept. The beautification and traffic control efforts are long overdue and will enhance the unique character of the district.

Our membership did have a few concerns or suggestions that we wanted to share. First, it was not clear to us if the 42nd Street medians were to be raised and planted like those along Fleur Drive or left as undecorated concrete. Concerns were expressed about the possibility of raised medians making it harder for drivers to see the children that swarm around Hubbell 9 months of the year. Second, we thought that changing the direction of the one-way on Chamberlain (from east to west) would make it easier to access the businesses along the stretch of Chamberlain just west of 42nd. Finally, it was suggested that any beautification efforts for the area would fall short as long as the massive billboard remains in place beside the Playhouse.

We would like to thank the vision committee for all of its hard work and time. Please keep us informed as the RCD plans progress.

Sincerely,

David DeForest Colvig
President, Ingersoll Park Neighborhood Association

We, the undersigned Roosevelt area Merchants would like to voice our objections to some of the proposed changes contained in the Roosevelt Cultural District Vision Plan. We would like the following points and objections considered.

1. We strenuously object to having our businesses unnecessarily disrupted by once again by being in a construction zone, and by some of the resulting proposed changes for our area. Since March 2004 there have been numerous construction projects going on in the immediate area. The previous construction projects and congestion, and interference with accessibility have resulted in lost business and permanently lost customers for many of the merchants. Since March of 2004, the area has endured the I-235 bridge construction, the 42nd St sewer construction, the Hubbell School remodel project and most recently, the Hubbell Gymnasium construction.

2. The proposed addition of traffic lights and medians will create more of a traffic bottleneck on 42nd. At the present time there are 12 blocks between Grand and University, additional lights at Crocker and Kingman (which we have heard are proposed) would bring the total to 8 lights w/in 12 blocks. Already, since the addition of the stoplight at 42nd and Pleasant, more of a bottleneck has been created, especially for the people in the northbound lanes. We fear that the additional traffic light and other traffic slowing means will obstruct the flow of traffic rather than just slowing the flow of traffic on 42nd. Most importantly, 42nd Street, is a very crucial emergency vehicle route. Emergency vehicles must be able to pass through the area unimpeded. Additionally, if 42nd St. becomes a stop and go traffic situation, it will become inconvenient for people, and could create the opposite effect, with motorists avoiding 42nd rather than using it. For the sake of convenience, motorists could be motivated to avoid 42nd rather than using it, shifting more traffic to Polk Blvd. and 35th Street, both of which, allow for fairly unobstructed north/south travel.

3. Proposed traffic pattern changes for Crocker and Chamberlain have the potential to negatively affect property values for residents on 43rd and Crocker, the owner of the Roosevelt Shopping Center, in addition to loss of business for the merchants on Chamberlain and 42nd Street. We feel that increased traffic on Crocker and reduced access to Chamberlain, will have negative affects for all. The owner of the Roosevelt Shopping Center is opposed to any proposed changes to his property, access to his parking lot, and directional and parking changes to Chamberlain.

4. As people who are in the area on a daily basis, we feel the additional angle parking spaces on Chamberlain are un-needed and unnecessary. The merchants on the west side of 42nd Street have sufficient parking. The proposed parking spots along Chamberlain would most likely receive little daily use with the exception of the Roosevelt students who would use them. And if that is the case, who will be responsible to pick up the trash that the students routinely leave next to their vehicles?

5. Trees and plantings, as long as they are judiciously spaced as to not obstruct views of motorists are a good addition. However, such trees and plantings should not obscure the businesses along Chamberlain, or the view of any children in the area. We feel strongly that for the children's and other pedestrian's safety, and the merchant's well being that good lines of sight are of the utmost importance. Aesthetically, a lot could be achieved with low plantings and well - spaced trees, however, great care should be taken so as not to interfere with motorist's line of sight.

As some of the locally owned, family businesses, who have invested years in the Roosevelt Community, and depend on the area for our financial livelihoods, and that of our employees, we oppose many aspects of the Roosevelt Vision Project which would result in another construction project in the immediate area, the additional stoplight, and the changing of the traffic direction of Chamberlain, and proposed alterations to 42nd Street. We feel that there are a number of things which can be done to beautify the area, slow down the 42nd St. traffic, which would minimize the inconvenience to neighbors, merchants and visitors to the area. Beaverdale is a good example of an area, which utilizes a slower speed limit, turning lanes, bicycle lanes, pedestrian crosswalks, plantings, and regular Police traffic patrols. These methods would use fewer financial and material resources, would create less confusion, and would not be harmful to our businesses and neighbor's property values and the environment.

Name	Business
Chuck + Anne Irvine	Boulevard Sports
Jeff Olmquist	Tri Point Audio
Viggo Horn	Alteration by Fran
_____	Band Creative
Andy (Phan) Kasmussen	Adam's Aquatics
Ande Cannon	For Corporate
Carl Cooper	Drake Garage Caldwell
N.W. [Signature]	Dose Salon
Julie [Signature]	Action Agents
Muddendorf	Curves