

Date January 24, 2011

An Ordinance entitled, "AN ORDINANCE to amend the Municipal Code of the City of Des Moines, Iowa, 2000, adopted by Ordinance No. 13,827, passed June 5, 2000, as heretofore amended, by amending Sections 114-241, 114-319.02, 114-2021, 114-2642, 114-2653, 114-2781, 114-2885, 114-2891, 114-2993, 114-3137.05, 114-3431, 114-3513, 114-4003, 114-4028 and 114-4087, relating to traffic and vehicle regulations",

presented.

Moved by \_\_\_\_\_ that this ordinance be considered and given first vote for passage.

FORM APPROVED:

(First of three required readings)

K. Massier  
 Katharine J. Massier  
 Assistant City Attorney

(Council Communication No. **11-037**)

COUNCIL ACTION	YEAS	NAYS	PASS	ABSENT
COWNIE				
COLEMAN				
GRIESS				
HENSLEY				
MAHAFFEY				
MEYER				
MOORE				
TOTAL				

**CERTIFICATE**

I, DIANE RAUH, City Clerk of said City hereby certify that at a meeting of the City Council of said City of Des Moines, held on the above date, among other proceedings the above was adopted.

IN WITNESS WHEREOF, I have hereunto set my hand and affixed my seal the day and year first above written.

MOTION CARRIED

APPROVED

\_\_\_\_\_  
 Mayor

\_\_\_\_\_  
 City Clerk

ORDINANCE NO. \_\_\_\_\_

AN ORDINANCE to amend the Municipal Code of the City of Des Moines, Iowa, 2000, adopted by Ordinance No. 13,827, passed June 5, 2000, as heretofore amended, by amending Sections 114-241, 114-319.02, 114-2021, 114-2642, 114-2653, 114-2781, 114-2885, 114-2891, 114-2993, 114-3137.05, 114-3431, 114-3513, 114-4003, 114-4028 and 114-4087, relating to traffic and vehicle regulations.

Be It Ordained by the City Council of the City of Des Moines, Iowa:

Section 1. That the Municipal Code of the City of Des Moines, Iowa, 2000, adopted by Ordinance No. 13,827, passed June 5, 2000, as heretofore amended, is hereby amended by amending Sections 114-241, 114-319.02, 114-2021, 114-2642, 114-2653, 114-2781, 114-2885, 114-2891, 114-2993, 114-3137.05, 114-3431, 114-3513, 114-4003, 114-4028 and 114-4087 relating to traffic and vehicle regulations, as follows:

**Sec. 114-241. Created; composition; appointment; terms.**

- (a) There is established in and for the city a traffic safety advisory committee.
- (b) The traffic safety advisory committee shall consist of eleven voting members. Seven of the members shall be appointed by the city council. One member shall be appointed by the superintendent of the Des Moines Independent Community School District to represent the interest of the schools citywide. ~~Four~~ Three of the members shall be ex officio members, consisting of the following officials or their designees: the chief of police, the city engineer, and the superintendent of the Des Moines Independent Community School District ~~and the chairperson of the citywide PTA.~~
- (c) The term of office of each of the seven appointed members of the traffic safety advisory committee shall be for staggered terms of three years. The expiration date for all terms of appointed members shall be December 31. Each member of the city council may recommend a candidate to fill one position on the board.

**Sec. 114-319.02. Locations of three-way stop intersections.**

The following intersections are hereby designated as three-way intersections. Stop signs shall be installed and maintained at the following intersections and the driver of a vehicle approaching these intersections from the directions hereinafter designated shall stop in accordance with this chapter before entering these intersections:

- (1) Avenue Frederick M. Hubbell and East Euclid Avenue. The driver of a vehicle approaching this intersection from the west, north and south shall stop before entering the intersection.
- (2) Pennsylvania Avenue and East Washington Avenue. The driver of a vehicle approaching this intersection from the east, north and south shall stop before entering the intersection.
- (3) County Line Road and Southeast Fifth Street. The driver of a vehicle approaching this intersection from the north, east and west shall stop before entering this intersection.
- (4) Watrous Avenue and Southwest Twenty-sixth Street. The driver of a vehicle approaching this intersection from the east, north and south shall stop before entering the intersection.
- (5) Guthrie Avenue (west) and North Union Street. The driver of a vehicle approaching this intersection from the north, south and west shall stop before entering the intersection.
- (6) Mulberry Street and Thirteenth Street. The driver of a vehicle approaching this intersection from the north, east and west shall stop before entering the intersection.
- (7) Southwest Eleventh and DART Way. The driver of a vehicle approaching this intersection from the north, south, and east shall stop before entering the intersection.

**Sec. 114-2021. Southwest Eleventh Street.**

Southwest Eleventh Street, at Geil Street, stop.

Southwest Eleventh Street, at Burnham Street, stop.

Southwest Eleventh Street, from the south line of Rittenhouse Street to the north line of Amos Avenue, stop.

Southwest Eleventh Street, at Murphy Street, stop.

**Sec. 114-2642. Sixth Avenue--Locust Street to Grand Avenue.**

Sixth Avenue, on the east side, from Locust Street to Grand Avenue, no parking 7:00 a.m. to 9:00 a.m. and 4:00 p.m. to 6:00 p.m.

Sixth Avenue, on the east side, from a point 70 feet north of Locust Street to a point 80 feet north thereof, commercial loading zone.

Sixth Avenue, on the west side, from a point 100 feet north of Locust Street to a point ~~123~~ 100 feet north thereof, ~~commercial~~ loading zone.

~~Sixth Avenue, on the west side, from Locust Street to a point 223 feet north thereof, no parking 7:00 a.m. to 9:00 a.m. and 4:00 p.m. to 6:00 p.m.~~

Sixth Avenue, on the west side, from a point ~~223~~ 200 feet north of Locust Street to Grand Avenue, no parking 7:00 a.m. to 6:00 p.m., Monday through Friday.

**Sec. 114-2653. East Sixth Street--East Walnut Street to East Locust Street.**

East Sixth Street, on the west side, from East Walnut Street to a point 135 feet north thereof, no parking any time.

East Sixth Street, on the east side, from East Walnut Street to a point 130 feet north thereof, no parking any time.

East Sixth Street, on the east side, from a point 130 feet north of East Walnut Street to a point 25 feet north thereof, commercial loading zone.

East Sixth Street, on the east side, from East Locust Street to a point 20 feet south thereof, no parking any time.

East Sixth Street, on the west side, from East Locust Street to a point ~~80~~ 25 feet south thereof, no parking any time.

**Sec. 114-2781. Eighteenth Street--Locust Street to Ingersoll Avenue.**

Eighteenth Street, on both sides, from Locust Street to Grand Avenue, no stopping or standing.

Eighteenth Street, on the east side, from Grand Avenue to a point 35 feet north thereof, no parking any time.

~~Eighteenth Street, on the east side, from a point 105 feet north of Grand Avenue to a point 35 feet north thereof, commercial loading zone.~~

**Sec. 114-2885. Thirty-fourth Street--John Lynde Road to Seneca Avenue.**

Thirty-fourth Street, on the west side, from St. John's Road to Elmwood Drive, no parking any time.

Thirty-fourth Street, on the west side, from Ingersoll Avenue to Woodland Avenue, no parking any time.

Thirty-fourth Street, on the east side, from Woodland Avenue to Center Street, no parking any time.

Thirty-fourth Street, on the west side, from Woodland Avenue to a point 50 feet north thereof, no parking any time.

Thirty-fourth Street, on the east side from Forest Avenue to a point 50 feet north thereof, no parking any time.

Thirty-fourth Street, on the east side, from University Avenue to Forest Avenue, no parking any time.

Thirty-fourth Street, on the west side, from University Avenue to Clark Street, no parking any time.

Thirty-fourth Street, on the east side, from a point 75 feet south of Clark Street to a point 75 feet north of Clark Street, no parking any time.

Thirty-fourth Street, on the east side, from a point 50 feet south of Jefferson Avenue to a point 50 feet north of Jefferson Avenue, no parking any time.

Thirty-fourth Street, on the west side, from a point 300 feet north of Clark Street to Urbandale Avenue, no parking any time.

Thirty-fourth Street, on the east side, from a point 50 feet south of Franklin Avenue to a point 50 feet north of Franklin Avenue, no parking any time.

Thirty-fourth Street, on the east side, from Lincoln Avenue to a point 50 feet south thereof, no parking any time.

Thirty-fourth Street, on the east side, from Hickman Road to a point 75 feet south thereof, no parking any time.

Thirty-fourth Street, on the east side, from Hickman Road to a point 60 feet north thereof, no parking any time.

Thirty-fourth Street, on the east side, from Sheridan Avenue to a point 50 feet south thereof, no parking any time.

Thirty-fourth Street, on the east side, from Urbandale Avenue to Adams Avenue, no parking any time.

Thirty-fourth Street, on the east side, from Douglas Avenue to a point 50 feet north thereof, no parking any time.

Thirty-fourth Street, on the west side, from Douglas Avenue to Seneca Avenue, no parking any time.

Thirty-fourth Street, on the east side, from a point 50 feet north of Douglas Avenue to Seneca Avenue, no parking 9:00 a.m. to 3:00 p.m., Monday through Friday.

**Sec. 114-2891. East Thirty-fifth Street--East Court Avenue to Avenue Frederick M. Hubbell.**

East Thirty-fifth Street, on the west side, from East Court Avenue to Dean Avenue, no parking any time.

East Thirty-fifth Street, on the east side, from Sims Drive to Garfield Avenue, no parking any time.

East Thirty-fifth Street, on the west side, from a point 50 feet south of East University Avenue to a point 50 feet north of East University Avenue, no parking any time.

East Thirty-fifth Street, on the west side, from a point 60 feet south of Kinsey Avenue and any part of the cul-de-sac to a point 120 feet north of Eastwood Drive, no parking any time.

East Thirty-fifth Street, on the west side, from East University Avenue to a point 50 feet north thereof, no parking any time.

East Thirty-fifth Street ~~on both sides~~ the east side, from ~~Thompson Avenue~~ Easton Boulevard to Arthur Avenue, no parking any time.

East Thirty-fifth Street, on the west side, from a point 25 feet south of Thompson Avenue to a point 25 feet north of Thompson Avenue, no parking any time.

East Thirty-fifth Street, on the west side, from Arthur Avenue to Hull Avenue, no parking any time.

East Thirty-fifth Street, on the east side, from East Ovid Avenue to a point 100 feet north thereof, no parking any time.

East Thirty-fifth Street, on the east side, from East Euclid Avenue to a point 70 feet south thereof, no parking any time.

**Sec. 114-2993. Arthur Avenue--First Street to east city limits.**

Arthur Avenue, on the north side, from First Street to a point 75 feet east of East Fourteenth Street, no parking any time.

Arthur Avenue, on the south side, from a point 50 feet west of Amherst Street to a point 130 feet east of Amherst Street, no parking any time.

Arthur Avenue, on the south side, from East Ninth Street to a point 50 feet west thereof, no parking any time.

Arthur Avenue, on the south side, from a point 50 feet west of East Eleventh Street to a point 50 feet east of East Eleventh Street, no parking any time.

Arthur Avenue, on the south side, from East Fourteenth Street to a point 75 feet west thereof, no parking any time.

Arthur Avenue, on the south side, from East Fourteenth Street to Glenbrook Drive, no parking any time.

Arthur Avenue, on the south side, from East Twenty-third Street to East Twenty-fourth Street, no parking any time.

Arthur Avenue, on the north side, from Lay Street to Farwell Road, no parking any time.

Arthur Avenue, on the north side, from a point 130 feet west of Farwell Road and any part of the cul-de-sac to Reynolds Lane, no parking any time.

Arthur Avenue, on the south side, from Avenue Frederick M. Hubbell to East Twenty-ninth Street, no parking any time.

Arthur Avenue, ~~on both sides~~ the north side, from East Thirty-fourth Street to East Thirty-fifth Street, no parking any time.

Arthur Avenue, on the south side, from East Thirty-fourth Street to a point 50 feet east thereof, no parking any time.

Arthur Avenue, on the south side, from East Thirty-~~fifth~~sixth Street to East Thirty-seventh Street, no parking any time.

Arthur Avenue, on the north side, from East Forty-second Street to east city limits, no parking any time.

**Sec. 114-3137.05. Dart Way--Southwest Ninth Street to dead end west of Southwest Ninth Street.**

Dart Way, on the north side, from Southwest Ninth Street to ~~Southwest Eleventh Street~~ ~~point 870 feet west thereof~~, no parking any time.

Dart Way, on the south side, from Southwest Ninth Street to ~~Southwest Eleventh Street~~ ~~point 690 feet west thereof~~, no parking any time.

**Sec. 114-3431. Locust Street--Thirteenth Street to Fifteenth Street.**

Locust Street, on the north side, from Thirteenth Street to a point 20 feet west thereof, no parking any time.

Locust Street, on the south side, from Thirteenth Street to a point 70 feet west thereof, commercial loading zone.

~~Locust Street, on the south side, from a point 70 feet west of Thirteenth Street to Fourteenth Street, no parking any time.~~

Locust Street, on the north side, from a point 20 feet west of Thirteenth Street to a point 90 feet west thereof, resident parking permit parking.

Locust Street, on the north side, from a point 110 feet west of Thirteenth Street to a point 55 feet west thereof, no parking any time.

Locust Street, on the north side, from a point 165 feet west of Thirteenth Street to a point 140 feet west thereof, resident parking permit parking.

Locust Street, on the south side, from a point 300 feet west of Thirteenth Street to Fifteenth Street, no parking any time.

Locust Street, on the north side, from Fifteenth Street to a point 20 feet east thereof, no parking any time.

**Sec. 114-3513. Murphy Street--Southwest Fifth Street to dead end west of Southwest Ninth Street.**

Murphy Street, on the north side, from Southwest Fifth Street to a point ~~320~~ 215 feet west of Southwest Ninth Street, no parking any time.

Murphy Street, on the south side, from Southwest Fifth Street to a point 75 feet west thereof, no parking any time.

Murphy Street, on the south side, from Southwest Seventh Street to a point ~~320~~ 215 feet west of Southwest Ninth Street, no parking any time.

**Sec. 114-4003. Eighteenth Street--Grand Avenue to Ingersoll Avenue.**

Eighteenth Street, on the east side, from a point 35 feet north of Grand Avenue to a point 70 feet north thereof, two-hour meters, 8:00 a.m. to 6:00 p.m.

Eighteenth Street, on the east side, from a point ~~140~~ 105 feet north of Grand Avenue to Ingersoll Avenue, four-hour meters, 8:00 a.m. to 6:00 p.m.

Eighteenth Street, on the west side, from Grand Avenue to Ingersoll Avenue, ten-hour meters, 8:00 a.m. to 6:00 p.m.

**Sec. 114-4028. Locust Street--Thirteenth Street to Fifteenth Street.**

Locust Street, on the south side, from a point 70 feet west of Thirteenth Street to Fourteenth Street, two-hour meters, 9:00 a.m. to 4:00 p.m.

~~Locust Street, on the north side, from a point 20 feet west of Thirteenth Street to a point 90 feet west thereof, four-hour meters, 9:00 a.m. to 6:00 p.m.~~

Locust Street, on the north side, from a point ~~165~~ 20 feet west of Thirteenth Street to a point 20 feet east of Fifteenth Street, four-hour meters, ~~9:00~~ 8:00 a.m. to 6:00 p.m.

**Sec. 114-4087. East Sixth Street--East Walnut Street to East Locust Street.**

East Sixth Street, on the west side, from a point 135 feet north of East Walnut Street to a point ~~80~~ 25 feet south of East Locust Street, four-hour meters, 8:00 a.m. to 6:00 p.m.

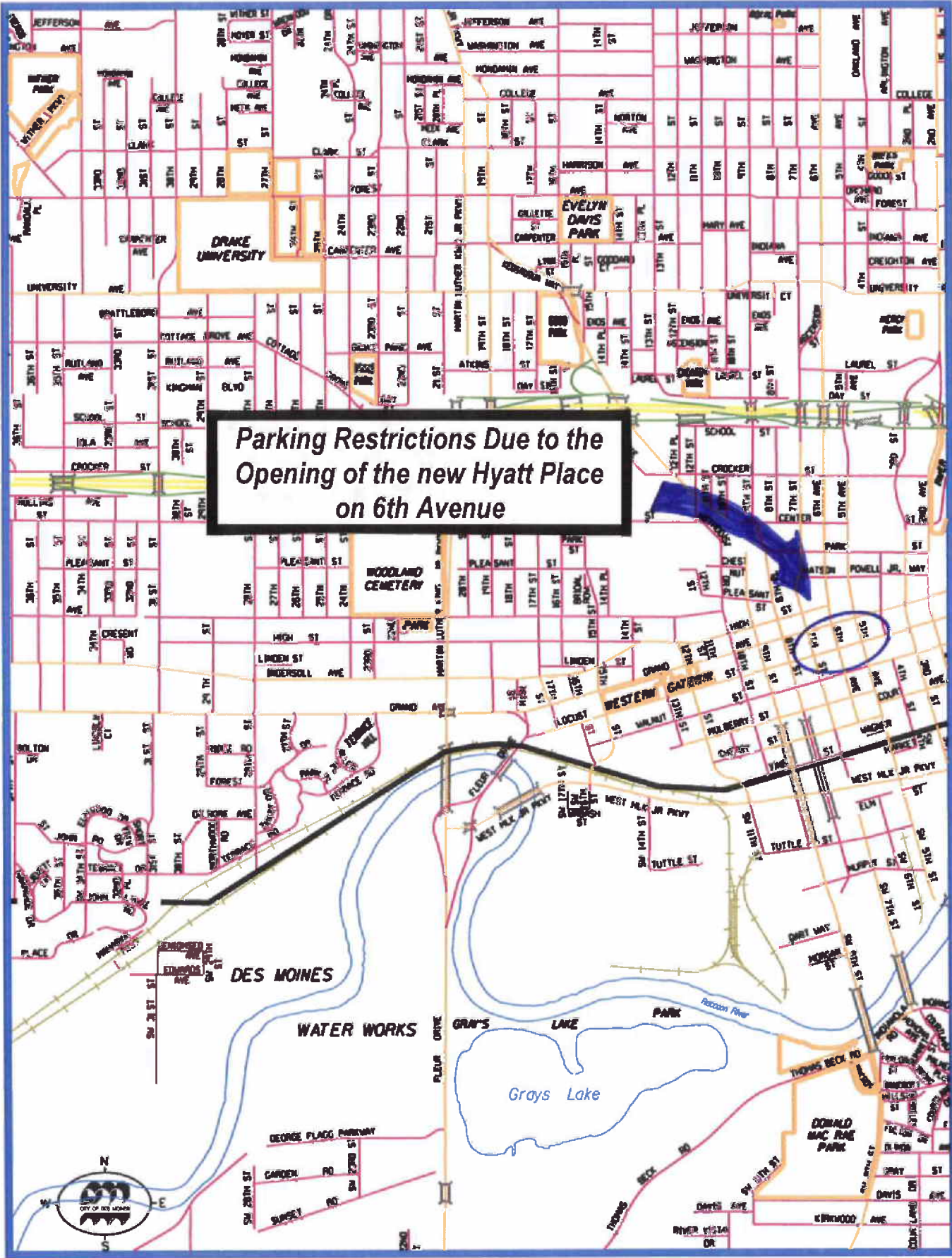
East Sixth Street, on the east side, from a point 20 feet south of East Locust Street to a point 155 feet north of East Walnut Street, four-hour meters, 8:00 a.m. to 6:00 p.m.

Section 2. This ordinance shall be in full force and effect from and after its passage and publication as provided by law.

FORM APPROVED:

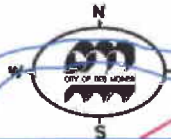
K. Massier  
Katharine J. Massier  
Assistant City Attorney

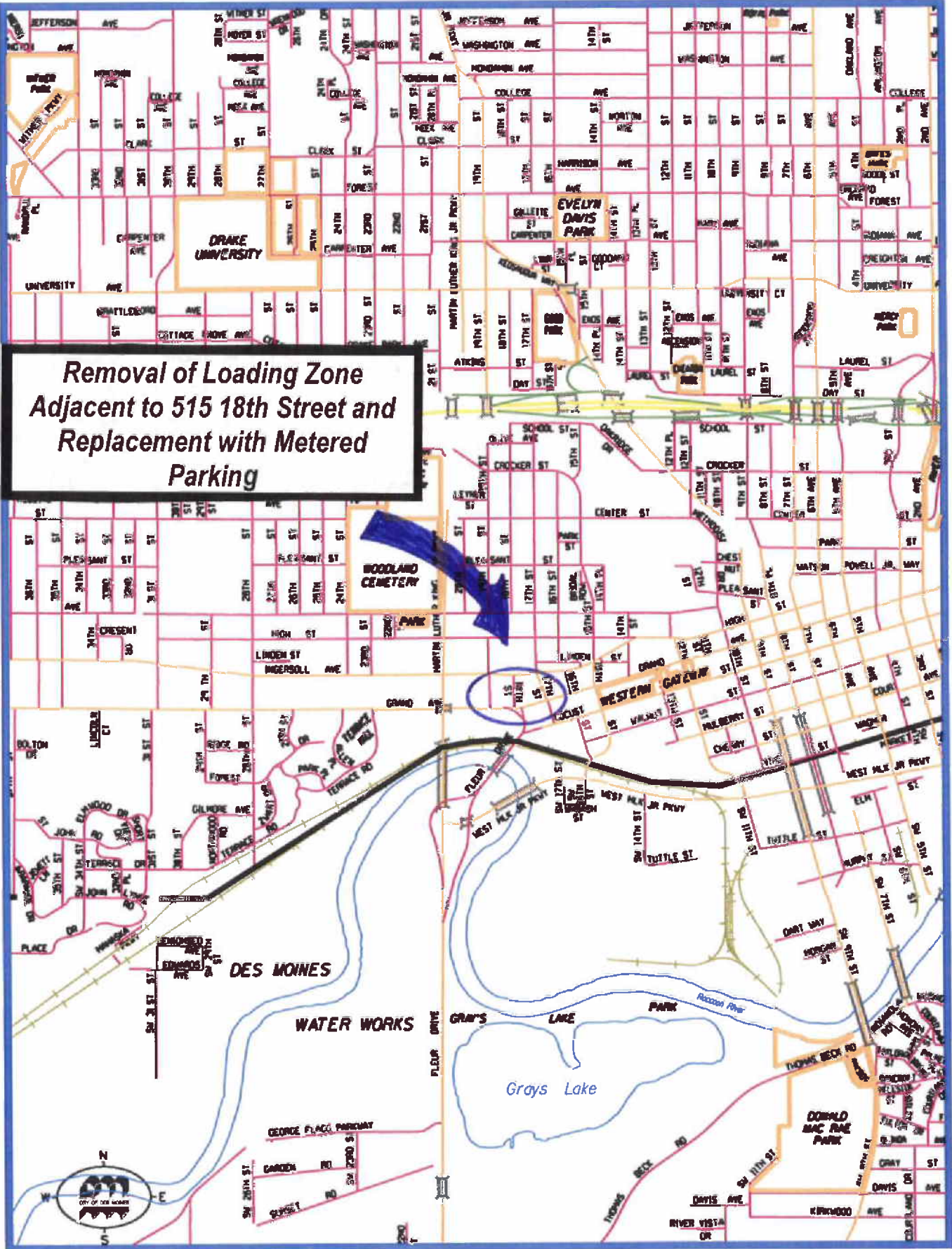


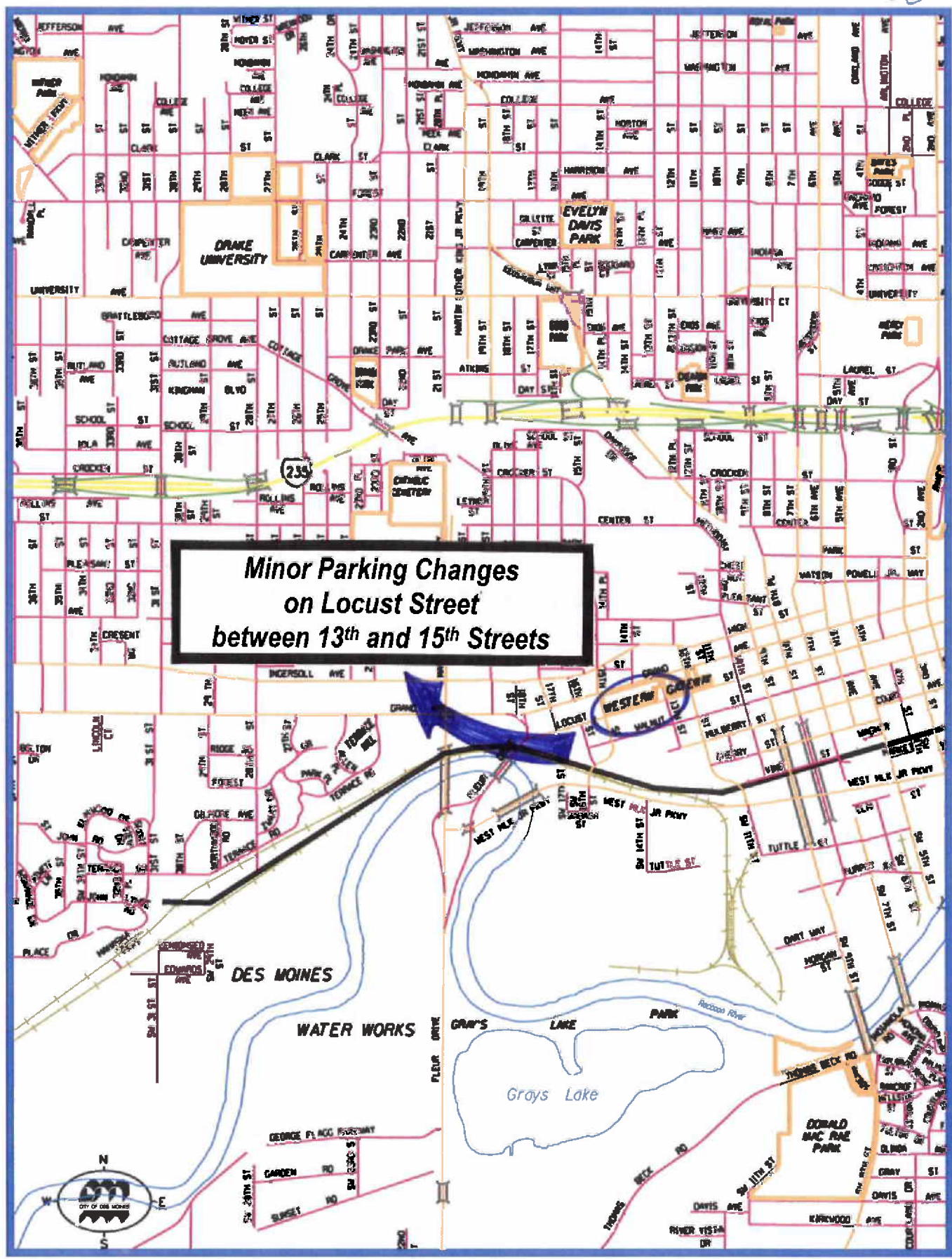


**Parking Restrictions Due to the Opening of the new Hyatt Place on 6th Avenue**

15 HILL ST  
16 HILL ST

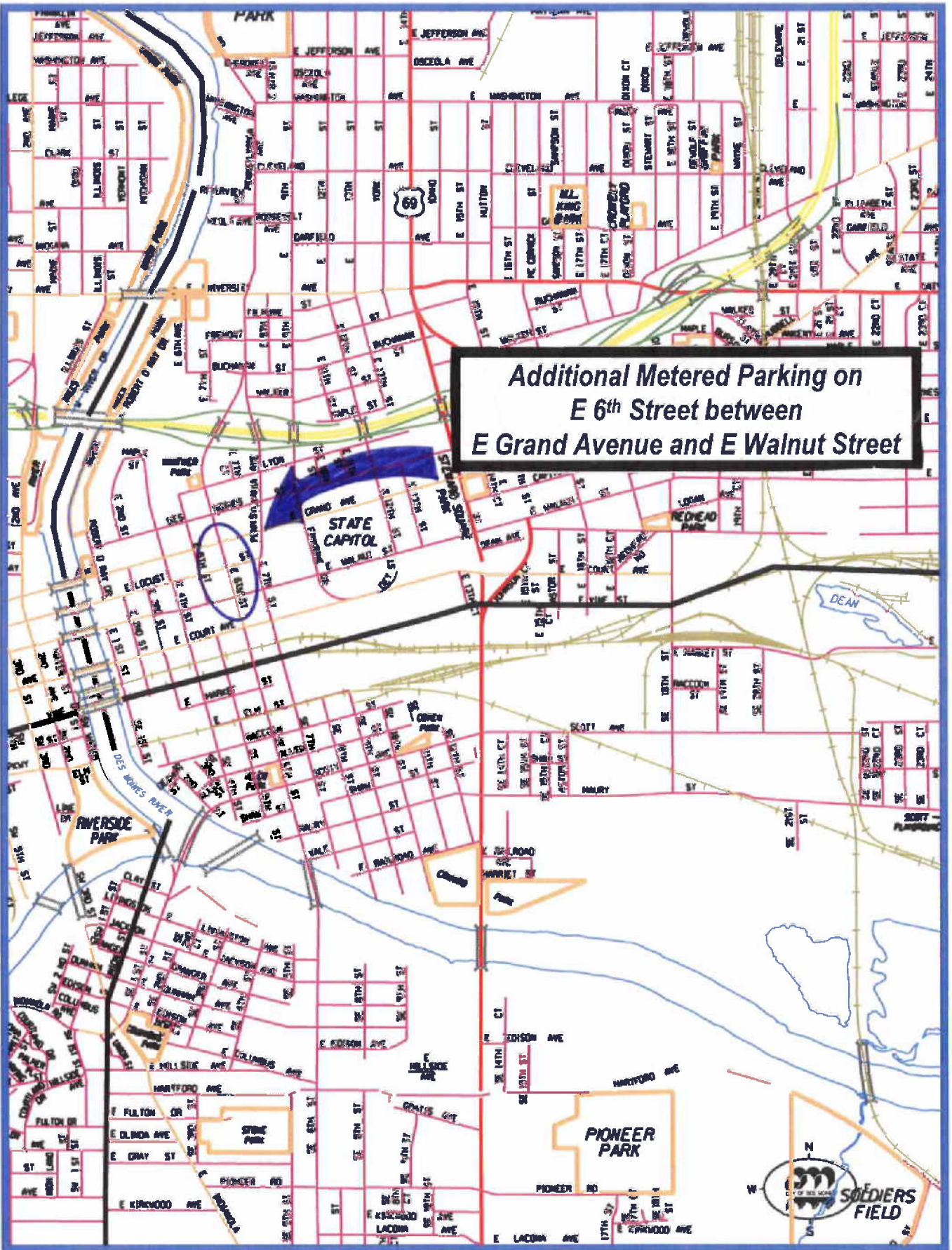




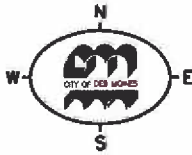


**Minor Parking Changes  
on Locust Street  
between 13<sup>th</sup> and 15<sup>th</sup> Streets**

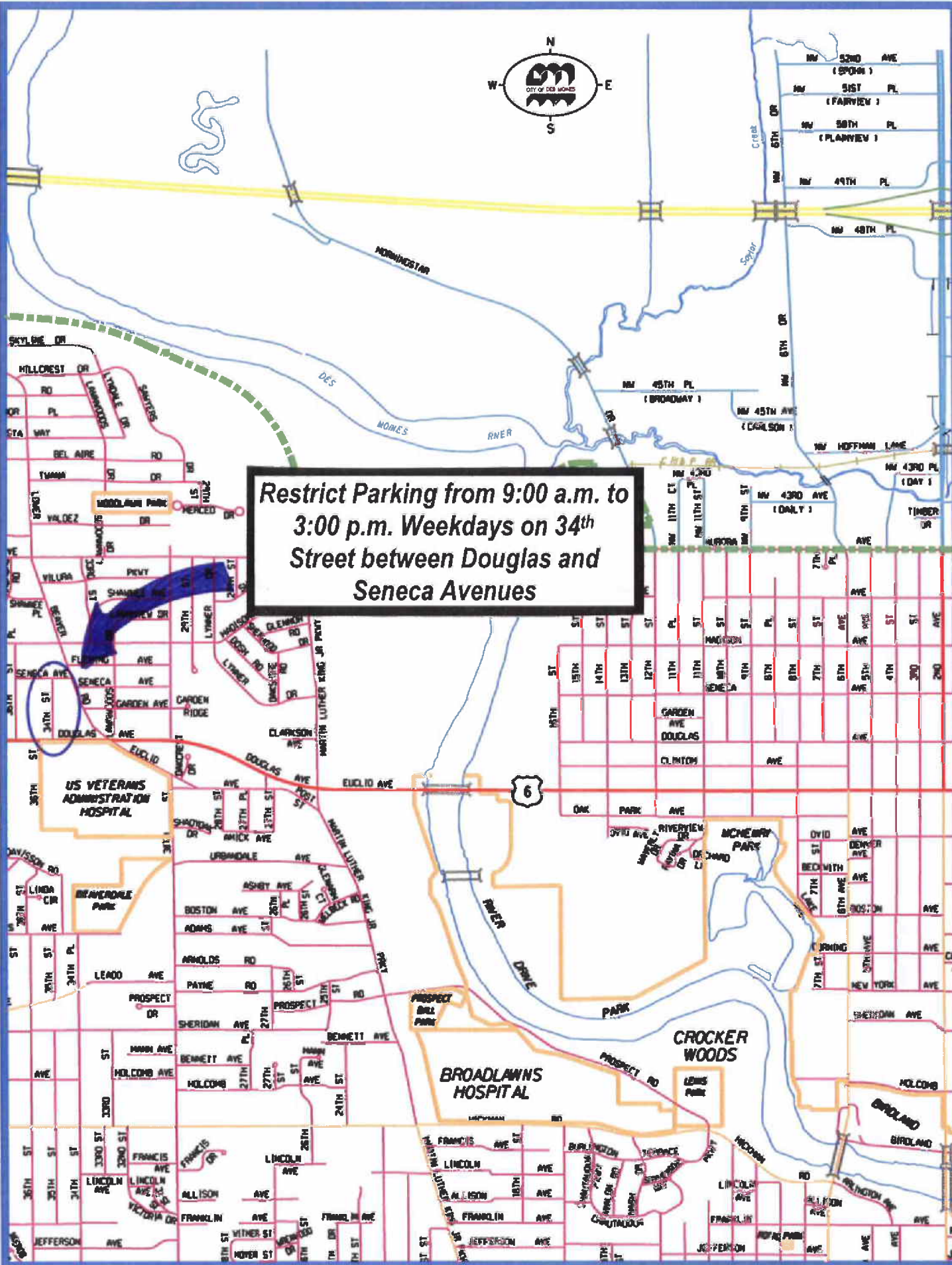




**Additional Metered Parking on  
E 6th Street between  
E Grand Avenue and E Walnut Street**



**Restrict Parking from 9:00 a.m. to 3:00 p.m. Weekdays on 34<sup>th</sup> Street between Douglas and Seneca Avenues**



**US VETERANS ADMINISTRATION HOSPITAL**

**BROADLAWNS HOSPITAL**

**CROCKER WOODS**

**LEWIS PARK**

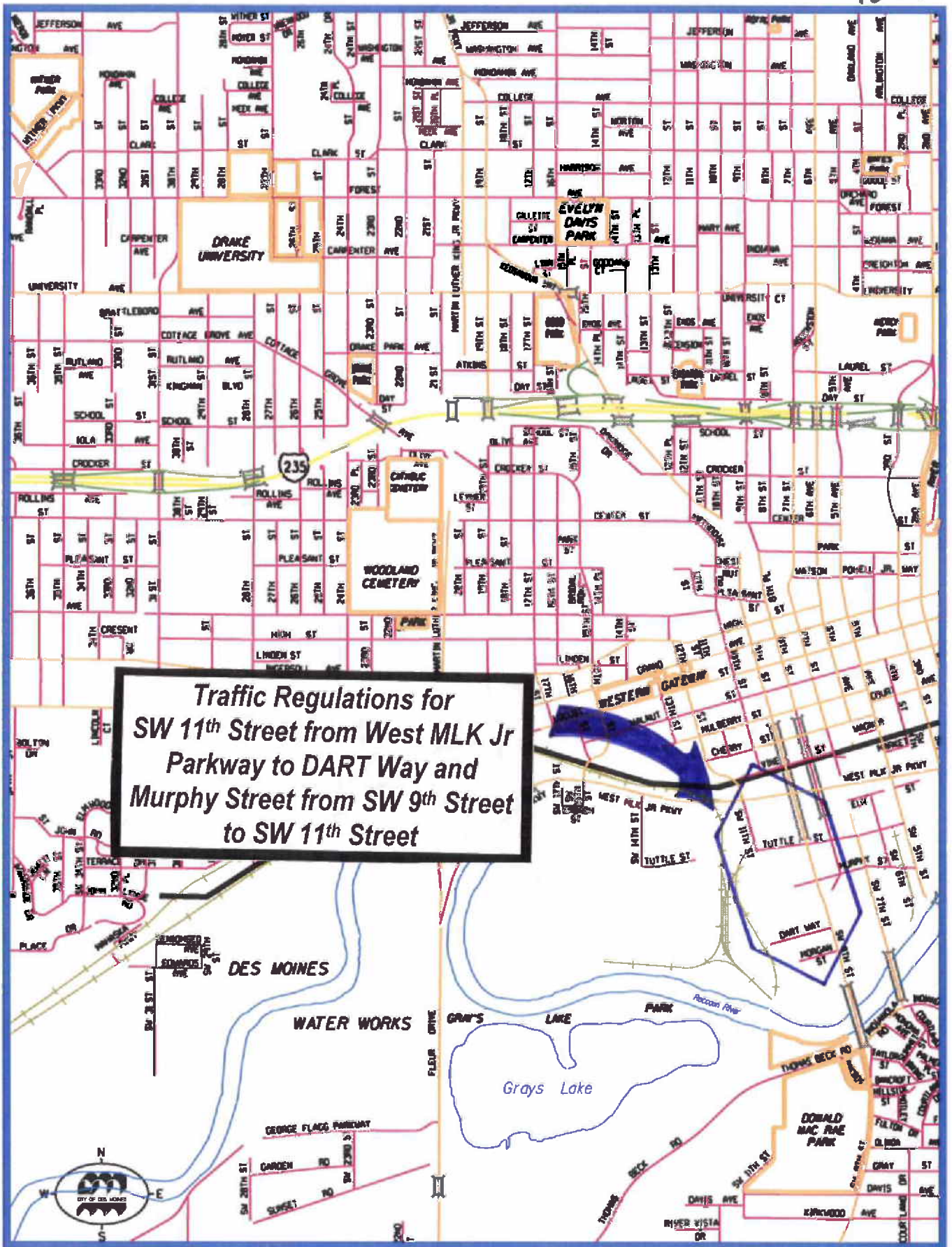
**BROADLAND**

**BIRLAND**

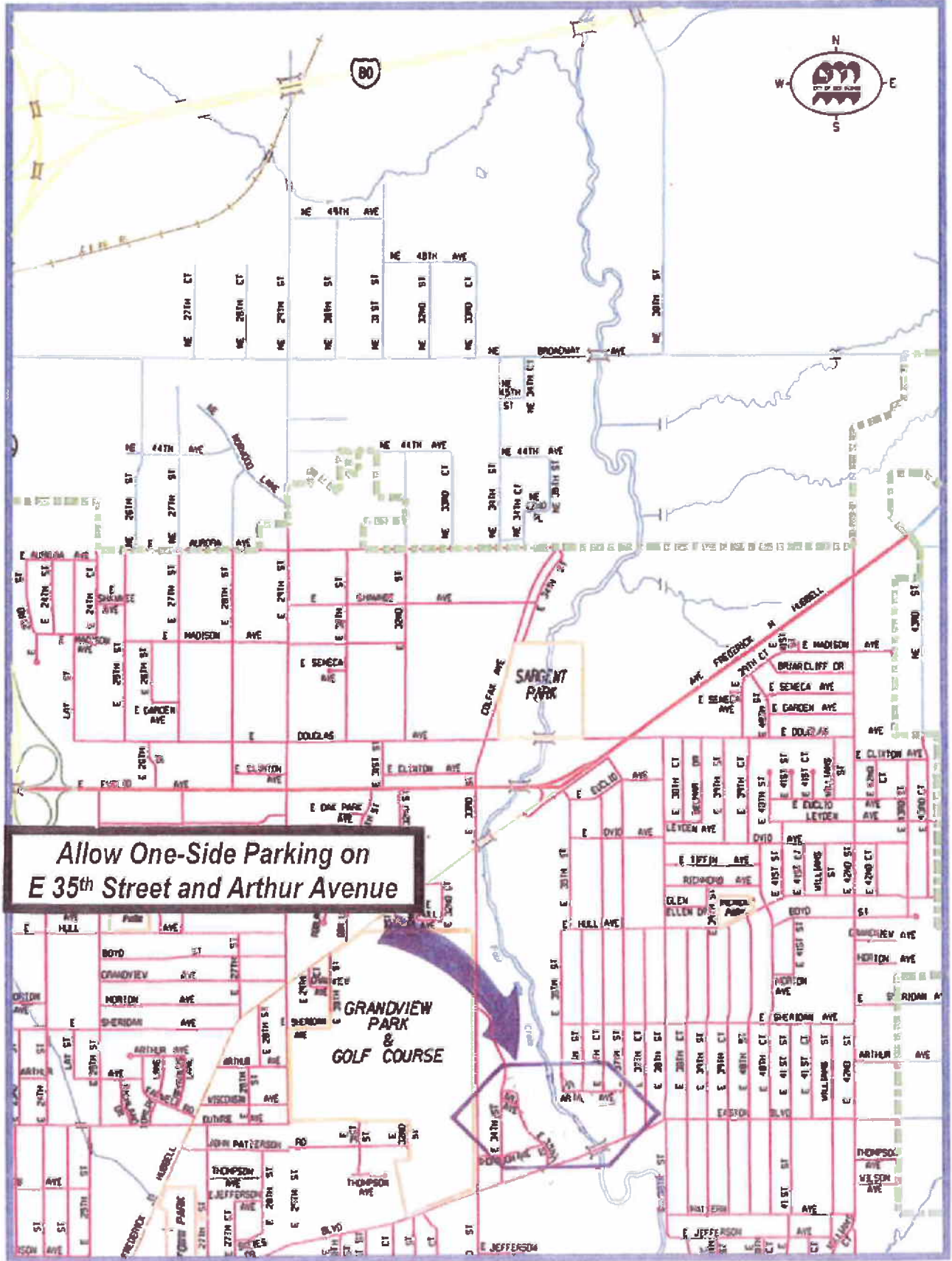
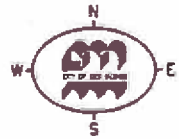
**JEFFERSON**

**JEFFERSON**

**JEFFERSON**



434.



**Allow One-Side Parking on  
E 35th Street and Arthur Avenue**