

DATE August 29, 2011

PUBLIC HEARING, APPROVING PLANS, SPECIFICATIONS, FORM OF CONTRACT DOCUMENTS, AND ENGINEER'S ESTIMATE ON
2011 SEWER REPAIR - CONTRACT 3;
RECEIVE AND FILE BIDS; AND DESIGNATION OF LOWEST RESPONSIVE, RESPONSIBLE BIDDER AS THE UNDERGROUND COMPANY, LTD., DUANE BURKHARDT, PRESIDENT, \$188,842.00

WHEREAS, on July 25, 2011, under Roll Call No. 11-1268, plans, specifications, form of contract documents, and Engineer's estimate of construction cost were filed with the City Clerk, for the construction of the following improvement:

2011 Sewer Repair - Contract 3, 07-2011-013

The improvement includes spot repair of sanitary sewer failures, full-depth pavement repair, construction of manhole, curbs, driveways, grading and restoration, and other incidental items; all in accordance with the contract documents including Plan File Nos. 534-081/099, located at 306 E. Hughes Avenue, 4125 E. 9th Street, E. 14th Street and Alpha Avenue, and John Patterson Road and E. 29th Street, Des Moines, Iowa

WHEREAS, notice of the hearing on the plans, specifications, form of contract documents, and Engineer's estimate of construction cost was published as required by law.

NOW, THEREFORE, BE IT RESOLVED BY THE CITY COUNCIL OF THE CITY OF DES MOINES, IOWA: That the hearing on the plans, specifications, form of contract documents, and Engineer's estimate of construction cost for said improvement be closed; and that said plans, specifications, form of contract documents, and Engineer's estimate of construction cost are hereby approved as the plans, specifications, form of contract documents, and Engineer's estimate of construction cost for said improvement.

BE IT FURTHER RESOLVED: That sealed bids for said improvement were submitted by the following bidders:

The Underground Company, Ltd.	Carlisle, IA
Priority Excavating LLC	Des Moines, IA
Van Hauen & Associates, Inc.	Grimes, IA
Raccoon Valley Contractors, LLC.	Waukee, IA
Pirc-Tobin Construction	Alburnett, IA
Synergy Contracting LLC	Bondurant, IA
H & W Contracting LLC	Sioux Falls, SD

DATE August 29, 2011

which were received and opened at a public meeting presided over by the Engineer in the City Council Chambers, 2nd Floor, City Hall, 400 Robert D. Ray Drive, Des Moines, Iowa at 11:00 a.m. on August 16, 2011. Said bids and the attached tabulation of bids for said improvement be and are hereby received and filed.

BE IT FURTHER RESOLVED: That the Des Moines City Engineer, as the Engineer, has determined that the lowest responsive, responsible bid for the construction of said improvement was submitted by The Underground Company, Ltd., Duane Burkhardt, President, 12245 Dakota Street, Carlisle, IA, 50047 in the amount of \$188,842.00, and said bid be and the same is hereby accepted.

BE IT FURTHER RESOLVED: That the bid security of the unsuccessful bidders be and is hereby authorized and directed to be returned.

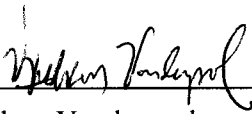
BE IT FURTHER RESOLVED: That the Engineer is hereby directed to secure execution by the lowest responsible, responsive Bidder and its surety of the contract documents in the form heretofore approved by this Council; that the Engineer is directed to thereafter present said contract documents to this Council for approval and authorization to the Mayor to sign; and that no contract shall be deemed to exist between the City of Des Moines and said Bidder until said contract has been executed by the Bidder, and shall have been approved by this Council and executed by the Mayor and attested to by the City Clerk.

(City Council Communication Number _____ attached.)

Moved by _____ to adopt.

FORM APPROVED:

FUNDS AVAILABLE



Kathleen Vanderpool
Deputy City Attorney

Scott E. Sanders
Des Moines Finance Director

JEB Funding Source: 2011-2012 CIP, Page Sanitary - 7, City-wide Sanitary Sewers, SAE054, Being: \$167,899.00 in City-wide Sanitary Sewers, and the remaining \$20,943.00 in Storm Water Utility Funds from STE057, City-wide Storm Water Utility Projects, Page Storm-5

★ **Roll Call Number**

Agenda Item Number

69

DATE August 29, 2011

COUNCIL ACTION	YEAS	NAYS	PASS	ABSENT
COWNIE				
COLEMAN				
GRIESS				
HENSLEY				
MAHAFFEY				
MEYER				
MOORE				
TOTAL				

MOTION CARRIED

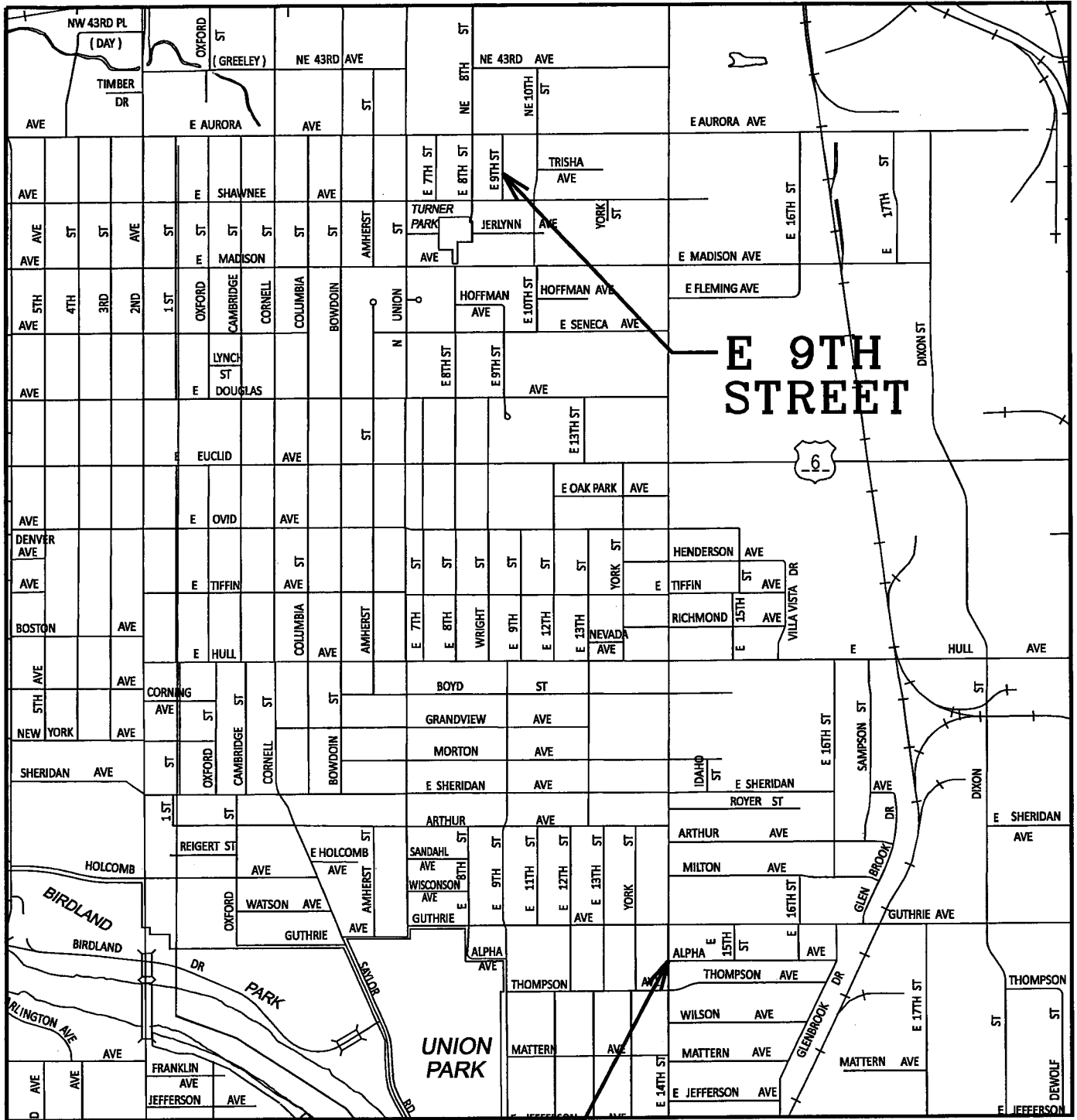
APPROVED

Mayor

I, Diane Rauh, City Clerk of said City Council, hereby certify that at a meeting of the City Council, held on the above date, among other proceedings the above was adopted.

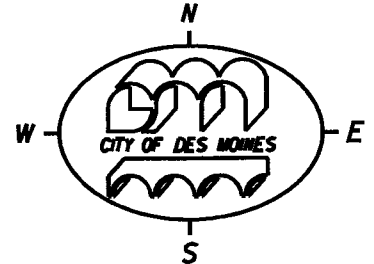
IN WITNESS WHEREOF, I have hereunto set my hand and affixed my seal the day and year first above written.

City Clerk



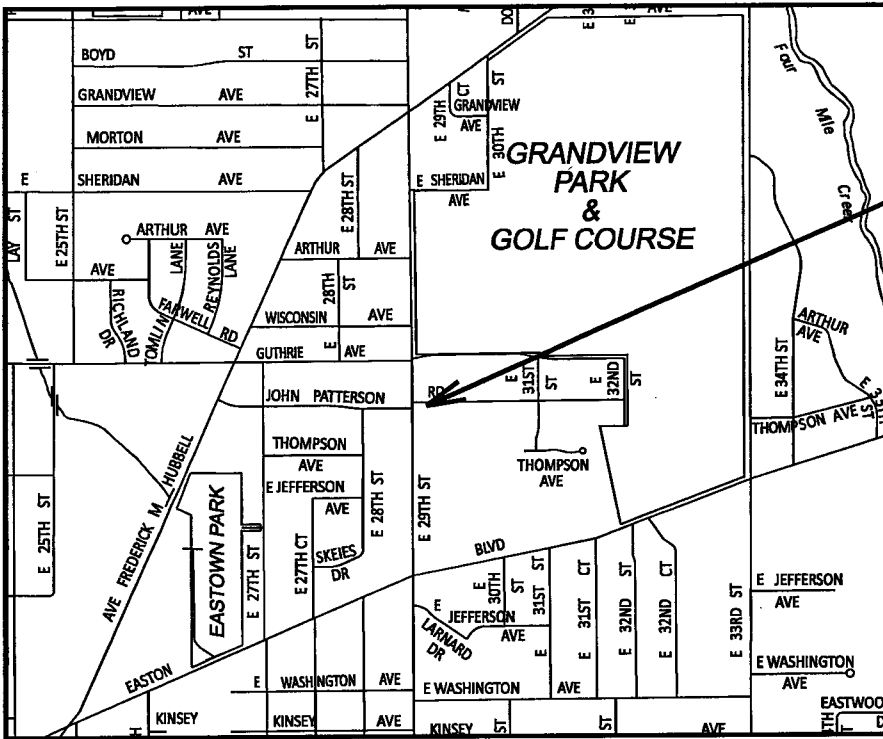
E 9TH STREET

**E 14TH ST &
ALPHA AVE**

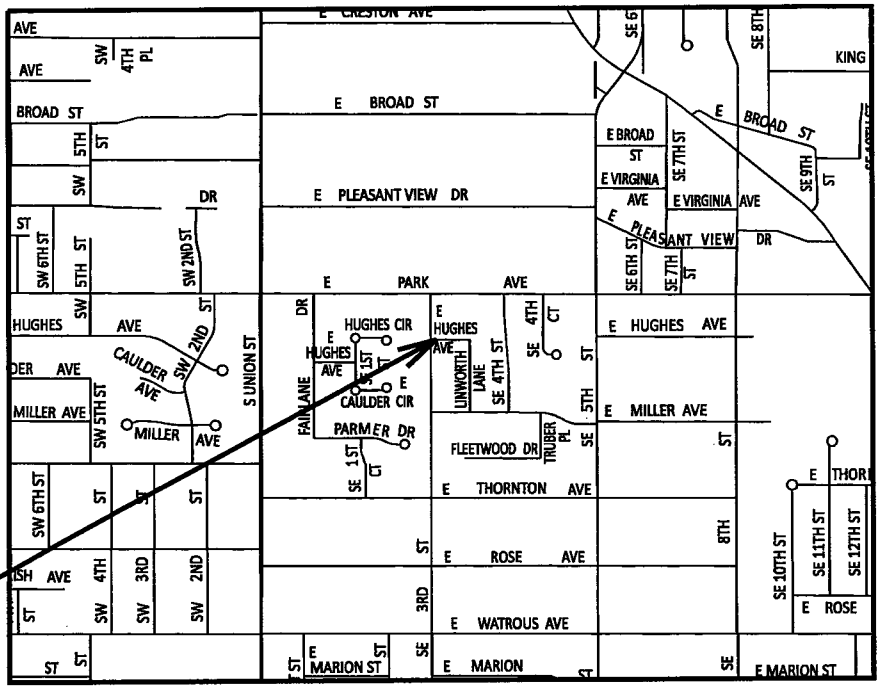


**2011 SEWER REPAIR - CONTRACT 3
ACTIVITY I.D. 07-2011-013**

sf:\ie-dates

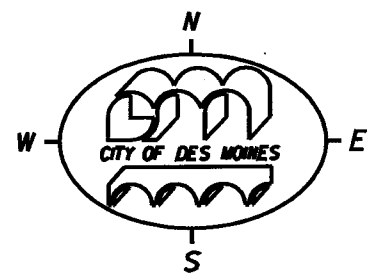


**JOHN
PATTERSON
RD**



**E HUGHES
AVENUE**

sf,le-dotes



2011 SEWER REPAIR - CONTRACT 3
ACTIVITY I.D. 07-2011-013
PAGE 2 OF 2

TABULATED BY: Z. Erickson
CHECKED BY: *[Signature]*
APPROVED BY: *[Signature]*

CONTRACTOR'S BID TABULATION
PROJECT: 2011 SEWER REPAIR - CONTRACT 3

-----ESTIMATE-----

ITEM	DESCRIPTION	QUANTITY	UNIT		AMOUNT		The Underground Company, Ltd. Carlisle, IA		Priority Excavating, LLC Des Moines, IA		Van Hauen & Associates, Inc. Grimes, IA	
			PRICE	AMOUNT	UNIT PRICE	AMOUNT	UNIT PRICE	AMOUNT	UNIT PRICE	AMOUNT	UNIT PRICE	AMOUNT
1	Mobilization	1 LS	\$12,291.00	\$12,291.00	\$9,500.00	\$9,500.00	\$15,000.00	\$15,000.00	\$9,127.00	\$9,127.00	\$10,000.00	\$10,000.00
2	Project Sign Standard - Small	1 EA	\$300.00	\$300.00	\$75.00	\$75.00	\$500.00	\$500.00	\$100.00	\$100.00	\$300.00	\$300.00
3	Tree Protection	1 LS	\$2,000.00	\$2,000.00	\$500.00	\$500.00	\$2.00	\$2.00	\$2.00	\$2.00	\$2.50	\$2.50
4	Tree Protection Fence	200 LF	\$2.00	\$400.00	\$4.00	\$800.00	\$8,000.00	\$8,000.00	\$8,000.00	\$8,000.00	\$10,000.00	\$10,000.00
5	Traffic Control	1 LS	\$12,000.00	\$12,000.00	\$5,000.00	\$5,000.00	\$2,000.00	\$2,000.00	\$5,000.00	\$5,000.00	\$5,000.00	\$5,000.00
6	Earthwork - John Patterson Rd	1 LS	\$1,500.00	\$1,500.00	\$5,200.00	\$5,200.00	\$13.00	\$13.00	\$15.00	\$15.00	\$15.00	\$15.00
7	Removal of Curb	193 LF	\$8.00	\$1,544.00	\$12.00	\$2,316.00	\$13.00	\$2,509.00	\$15.00	\$2,895.00	\$15.00	\$2,895.00
8	Removal of Driveway	22 SY	\$10.00	\$220.00	\$10.00	\$220.00	\$1,000.00	\$1,000.00	\$1,000.00	\$1,000.00	\$1,000.00	\$1,000.00
9	Removal of Manhole	1 EA	\$500.00	\$500.00	\$400.00	\$400.00	\$300.00	\$300.00	\$25.00	\$25.00	\$15.00	\$15.00
10	Removal of Storm Sewer	12 LF	\$20.00	\$240.00	\$300.00	\$3,600.00	\$300.00	\$300.00	\$11.00	\$11.00	\$16.00	\$16.00
11	Pavement Scarification	65 SY	\$12.00	\$780.00	\$15.00	\$975.00	\$85.00	\$85.00	\$90.00	\$90.00	\$80.00	\$80.00
12	Patch, Full-Depth Repair, PCC	266 SY	\$175.00	\$46,550.00	\$22,610.00	\$22,610.00	\$105.00	\$105.00	\$105.00	\$105.00	\$120.00	\$120.00
13	Patch, Full-Depth Repair, PCC with HMA Overlay	275 SY	\$200.00	\$55,000.00	\$34,375.00	\$34,375.00	\$17,000.00	\$17,000.00	\$17,000.00	\$17,000.00	\$20,000.00	\$20,000.00
14	Spot Repairs By Count	4 EA	\$15,000.00	\$60,000.00	\$63,600.00	\$63,600.00	\$175.00	\$175.00	\$175.00	\$175.00	\$75.00	\$75.00
15	Spot Repairs By Linear Foot	90 LF	\$200.00	\$18,000.00	\$20,700.00	\$20,700.00	\$4,700.00	\$4,700.00	\$8,000.00	\$8,000.00	\$4,000.00	\$4,000.00
16	Manhole, SW-301, 48" Dia.	1 EA	\$5,000.00	\$5,000.00	\$4,700.00	\$4,700.00	\$1,200.00	\$1,200.00	\$1,200.00	\$1,200.00	\$1,200.00	\$1,200.00
17	Storm Sewer, 18" RCP, Class III	12 LF	\$100.00	\$1,200.00	\$1,500.00	\$1,500.00	\$3,000.00	\$3,000.00	\$3,000.00	\$3,000.00	\$2,000.00	\$2,000.00
18	Connection to Existing Manhole	1 EA	\$1,500.00	\$1,500.00	\$1,050.00	\$1,050.00	\$1.00	\$1.00	\$1,000.00	\$1,000.00	\$2,500.00	\$2,500.00
19	New Water Service	1 EA	\$3,000.00	\$3,000.00	\$1.00	\$1.00	\$1.00	\$1.00	\$1,000.00	\$1,000.00	\$1,500.00	\$1,500.00
20	Relocate Water Service	1 EA	\$2,000.00	\$2,000.00	\$1.00	\$1.00	\$1.00	\$1.00	\$400.00	\$400.00	\$600.00	\$600.00
21	Disconnect Water Service	1 EA	\$600.00	\$600.00	\$1.00	\$1.00	\$1.00	\$1.00	\$1,000.00	\$1,000.00	\$800.00	\$800.00
22	Water Service Tap	1 EA	\$1,000.00	\$1,000.00	\$1.00	\$1.00	\$1.00	\$1.00	\$350.00	\$350.00	\$300.00	\$300.00
23	New Stop Box Riser	1 EA	\$500.00	\$500.00	\$1.00	\$1.00	\$1.00	\$1.00	\$350.00	\$350.00	\$300.00	\$300.00
24	New Stop Box Rod	1 EA	\$500.00	\$500.00	\$1.00	\$1.00	\$1.00	\$1.00	\$350.00	\$350.00	\$300.00	\$300.00
25	Curb, PCC, 2'	193 LF	\$35.00	\$6,755.00	\$5,790.00	\$5,790.00	\$35.00	\$35.00	\$35.00	\$35.00	\$35.00	\$35.00
26	Driveway, PCC, 6"	24 SY	\$55.00	\$1,320.00	\$1,320.00	\$1,320.00	\$23.00	\$23.00	\$23.00	\$23.00	\$25.00	\$25.00
27	HMA (1M ESAL), Surface Course, 1/2 Inch Mix	65 SY	\$35.00	\$2,275.00	\$2,080.00	\$2,080.00	\$13.00	\$13.00	\$13.00	\$13.00	\$15.00	\$15.00
28	Topsoil, Furnish and Place	35 CY	\$35.00	\$1,225.00	\$525.00	\$525.00	\$50.00	\$50.00	\$50.00	\$50.00	\$50.00	\$50.00
29	Sod	40 SQ	\$45.00	\$1,800.00	\$2,000.00	\$2,000.00						

TOTAL CONSTRUCTION COST \$240,000.00
 PERCENT OF ENGINEER'S ESTIMATE -21.32%
 Low

\$188,842.00
 -18.36%

\$197,197.00
 -17.83%

69

TABULATED BY: Z. Erickson
CHECKED BY: *[Signature]*
APPROVED BY: _____

CONTRACTOR'S BID TABULATION
PROJECT: 2011 SEWER REPAIR - CONTRACT 3

ESTIMATE

ITEM	DESCRIPTION	QUANTITY	UNIT		AMOUNT		Raccoon Valley Contractors, LLC Waukee, IA	Pirc-Tobin Construction, Inc. Alburnett, IA	Synergy Contracting, LLC Bondurant, IA	TOTAL	PERCENT
			PRICE	AMOUNT	PRICE	AMOUNT					
1	Mobilization	1 LS	\$12,291.00	\$12,291.00	\$31,949.00	\$31,949.00				\$75,239.00	
2	Project Sign Standard - Small	1 EA	\$300.00	\$300.00	\$300.00	\$300.00				\$900.00	
3	Tree Protection	1 LS	\$2,000.00	\$2,000.00	\$1,800.00	\$1,800.00				\$3,600.00	
4	Tree Protection Fence	200 LF	\$2.00	\$400.00	\$3.50	\$700.00				\$1,100.00	
5	Traffic Control	1 LS	\$12,000.00	\$12,000.00	\$6,500.00	\$6,500.00				\$18,500.00	
6	Earthwork - John Patterson Rd	1 LS	\$1,500.00	\$1,500.00	\$3,000.00	\$3,000.00				\$4,500.00	
7	Removal of Curb	193 LF	\$8.00	\$1,544.00	\$15.00	\$2,895.00				\$4,439.00	
8	Removal of Driveway	22 SY	\$10.00	\$220.00	\$8.00	\$176.00				\$396.00	
9	Removal of Manhole	1 EA	\$500.00	\$500.00	\$500.00	\$500.00				\$1,000.00	
10	Removal of Storm Sewer	12 LF	\$20.00	\$240.00	\$10.00	\$120.00				\$360.00	
11	Pavement Scarification	65 SY	\$12.00	\$780.00	\$15.00	\$975.00				\$1,755.00	
12	Patch, Full-Depth Repair, PCC	266 SY	\$175.00	\$46,550.00	\$75.00	\$19,950.00				\$66,500.00	
13	Patch, Full-Depth Repair, PCC with HMA Overlay	275 SY	\$200.00	\$55,000.00	\$90.00	\$24,750.00				\$79,750.00	
14	Spot Repairs By Count	4 EA	\$15,000.00	\$60,000.00	\$4,500.00	\$18,000.00				\$78,000.00	
15	Spot Repairs By Linear Foot	90 LF	\$200.00	\$18,000.00	\$800.00	\$72,000.00				\$90,000.00	
16	Manhole, SW-301, 48" Dia.	1 EA	\$5,000.00	\$5,000.00	\$4,000.00	\$4,000.00				\$9,000.00	
17	Storm Sewer, 18" RCP, Class III	12 LF	\$100.00	\$1,200.00	\$40.00	\$480.00				\$1,680.00	
18	Connection to Existing Manhole	1 EA	\$1,500.00	\$1,500.00	\$1,000.00	\$1,000.00				\$2,500.00	
19	New Water Service	1 EA	\$3,000.00	\$3,000.00	\$1,000.00	\$1,000.00				\$4,000.00	
20	Relocate Water Service	1 EA	\$2,000.00	\$2,000.00	\$600.00	\$600.00				\$2,600.00	
21	Disconnect Water Service	1 EA	\$600.00	\$600.00	\$200.00	\$200.00				\$800.00	
22	Water Service Tap	1 EA	\$1,000.00	\$1,000.00	\$300.00	\$300.00				\$1,300.00	
23	New Stop Box Riser	1 EA	\$500.00	\$500.00	\$200.00	\$200.00				\$700.00	
24	New Stop Box Rod	1 EA	\$500.00	\$500.00	\$150.00	\$150.00				\$650.00	
25	Curb, PCC, 2'	193 LF	\$35.00	\$6,755.00	\$35.00	\$6,755.00				\$13,510.00	
26	Driveway, PCC, 6"	24 SY	\$55.00	\$1,320.00	\$40.00	\$960.00				\$2,280.00	
27	HMA (1M ESAL), Surface Course, 1/2 Inch Mix	65 SY	\$35.00	\$2,275.00	\$36.00	\$2,340.00				\$4,615.00	
28	Topsoil, Furnish and Place	35 CY	\$35.00	\$1,225.00	\$40.00	\$1,400.00				\$2,625.00	
29	Sod	40 SQ	\$45.00	\$1,800.00	\$50.00	\$2,000.00				\$3,800.00	
										\$240,000.00	
										\$205,000.00	-14.58%
										\$213,698.00	-10.96%
										\$226,323.00	-5.70%

TOTAL CONSTRUCTION COST
PERCENT OF ENGINEER'S ESTIMATE

DEPARTMENT OF ENGINEERING
CITY OF DES MOINES, IOWA

Activity ID 07-2011-013
Bid Date: 08/16/2011

TABULATED BY: R. Erickson
CHECKED BY: R. DeGroot
APPROVED BY: R. DeGroot

CONTRACTOR'S BID TABULATION
PROJECT: 2011 SEWER REPAIR - CONTRACT 3

ESTIMATE

ITEM	DESCRIPTION	QUANTITY	UNIT PRICE	AMOUNT	UNIT PRICE	AMOUNT
1	Mobilization	1 LS	\$12,291.00	\$12,291.00	\$62,000.00	\$62,000.00
2	Project Sign Standard - Small	1 EA	\$300.00	\$300.00	\$300.00	\$300.00
3	Tree Protection	1 LS	\$2,000.00	\$2,000.00	\$1,000.00	\$1,000.00
4	Tree Protection Fence	200 LF	\$2.00	\$400.00	\$3.00	\$600.00
5	Traffic Control	1 LS	\$12,000.00	\$12,000.00	\$7,500.00	\$7,500.00
6	Earthwork - John Patterson Rd	1 LS	\$1,500.00	\$1,500.00	\$2,500.00	\$2,500.00
7	Removal of Curb	193 LF	\$8.00	\$1,544.00	\$15.00	\$2,895.00
8	Removal of Driveway	22 SY	\$10.00	\$220.00	\$15.00	\$330.00
9	Removal of Manhole	1 EA	\$500.00	\$500.00	\$750.00	\$750.00
10	Removal of Storm Sewer	12 LF	\$20.00	\$240.00	\$5.00	\$60.00
11	Pavement Scarification	65 SY	\$12.00	\$780.00	\$20.00	\$1,300.00
12	Patch, Full-Depth Repair, PCC	266 SY	\$175.00	\$46,550.00	\$100.00	\$26,600.00
13	Patch, Full-Depth Repair, PCC with HMA Overlay	275 SY	\$200.00	\$55,000.00	\$135.00	\$37,125.00
14	Spot Repairs By Count	4 EA	\$15,000.00	\$60,000.00	\$18,000.00	\$72,000.00
15	Spot Repairs By Linear Foot	90 LF	\$200.00	\$18,000.00	\$225.00	\$20,250.00
16	Manhole, SW-301, 48" Dia.	1 EA	\$5,000.00	\$5,000.00	\$4,400.00	\$4,400.00
17	Storm Sewer, 18" RCP, Class III	12 LF	\$100.00	\$1,200.00	\$35.00	\$420.00
18	Connection to Existing Manhole	1 EA	\$1,500.00	\$1,500.00	\$2,500.00	\$2,500.00
19	New Water Service	1 EA	\$3,000.00	\$3,000.00	\$2,500.00	\$2,500.00
20	Relocate Water Service	1 EA	\$2,000.00	\$2,000.00	\$2,000.00	\$2,000.00
21	Disconnect Water Service	1 EA	\$600.00	\$600.00	\$350.00	\$350.00
22	Water Service Tap	1 EA	\$1,000.00	\$1,000.00	\$3,000.00	\$3,000.00
23	New Stop Box Riser	1 EA	\$500.00	\$500.00	\$250.00	\$250.00
24	New Stop Box Rod	1 EA	\$500.00	\$500.00	\$250.00	\$250.00
25	Curb, PCC, 2'	193 LF	\$35.00	\$6,755.00	\$40.00	\$7,720.00
26	Driveway, PCC, 6"	24 SY	\$55.00	\$1,320.00	\$80.00	\$1,920.00
27	HMA (1M ESAL), Surface Course, 1/2 Inch Mix	65 SY	\$35.00	\$2,275.00	\$38.00	\$2,470.00
28	Topsoil, Furnish and Place	35 CY	\$35.00	\$1,225.00	\$35.00	\$1,225.00
29	Sod	40 SQ	\$45.00	\$1,800.00	\$75.00	\$3,000.00
				\$240,000.00		\$267,215.00
						+11.34%

TOTAL CONSTRUCTION COST
PERCENT OF ENGINEER'S ESTIMATE