

★ **Roll Call Number**

Agenda Item Number

10 C

DATE August 13, 2012

**ACCEPTING COMPLETED CONSTRUCTION AND APPROVING FINAL PAYMENT
FOR 2011 SEWER REPAIR - CONTRACT 1, VAN HAUEN & ASSOCIATES, INC.**

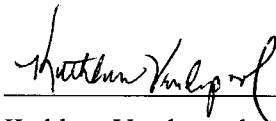
BE IT RESOLVED BY THE CITY COUNCIL OF THE CITY OF DES MOINES, IOWA: That the attached report of the Des Moines City Engineer, showing the cost of the construction of the 2011 Sewer Repair - Contract 1, 08-2011-009, in accordance with the contract approved between Van Hauen & Associates, Inc., Brian Tancos, President, 1205 SW 37th Street, Grimes, IA 50111, under Roll Call No. 11-2012, of November 21, 2011, and the City of Des Moines, and recommending the acceptance thereof, be and the same is hereby approved, and accepted, and

BE IT FURTHER RESOLVED: That \$532,055.61 is the total cost, of which \$516,093.94 has been paid the Contractor, and \$0.00 is now due and is hereby approved as final partial payment for the above project, the remaining balance of \$15,961.67 is to be paid at the end of thirty days, with funds retained for unresolved claims on file in accordance with Iowa Code Chapter 573.

BE IT FURTHER RESOLVED: That the Des Moines Finance Director be and is hereby authorized to release said retainage if suit is not filed as above provided.

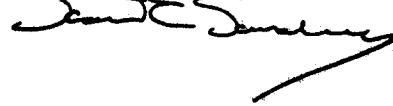
Moved by _____ to adopt.

FORM APPROVED:

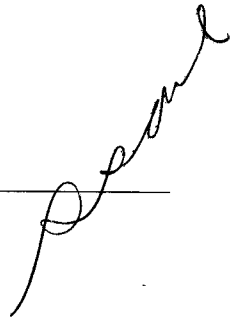


Kathleen Vanderpool
Deputy City Attorney

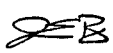
FUNDS AVAILABLE



Scott E. Sanders
Des Moines Finance Director



Funding Source: 2012-2013 CIP, Page Storm - 4, City-wide Storm Water Utility Projects, STE057, Storm Water Utility Funds, Being: \$318,788.60 in FEMA funding; and the remaining \$213,267.01 in Sanitary Sewer Funds from SAE054, City-wide Sanitary Sewers.





Roll Call Number

Agenda Item Number

_____ **10C** _____

DATE August 13, 2012

COUNCIL ACTION	YEAS	NAYS	PASS	ABSENT
COWNIE				
COLEMAN				
GRIESS				
HENSLEY				
MAHAFFEY				
MEYER				
MOORE				
TOTAL				

MOTION CARRIED

APPROVED

Mayor

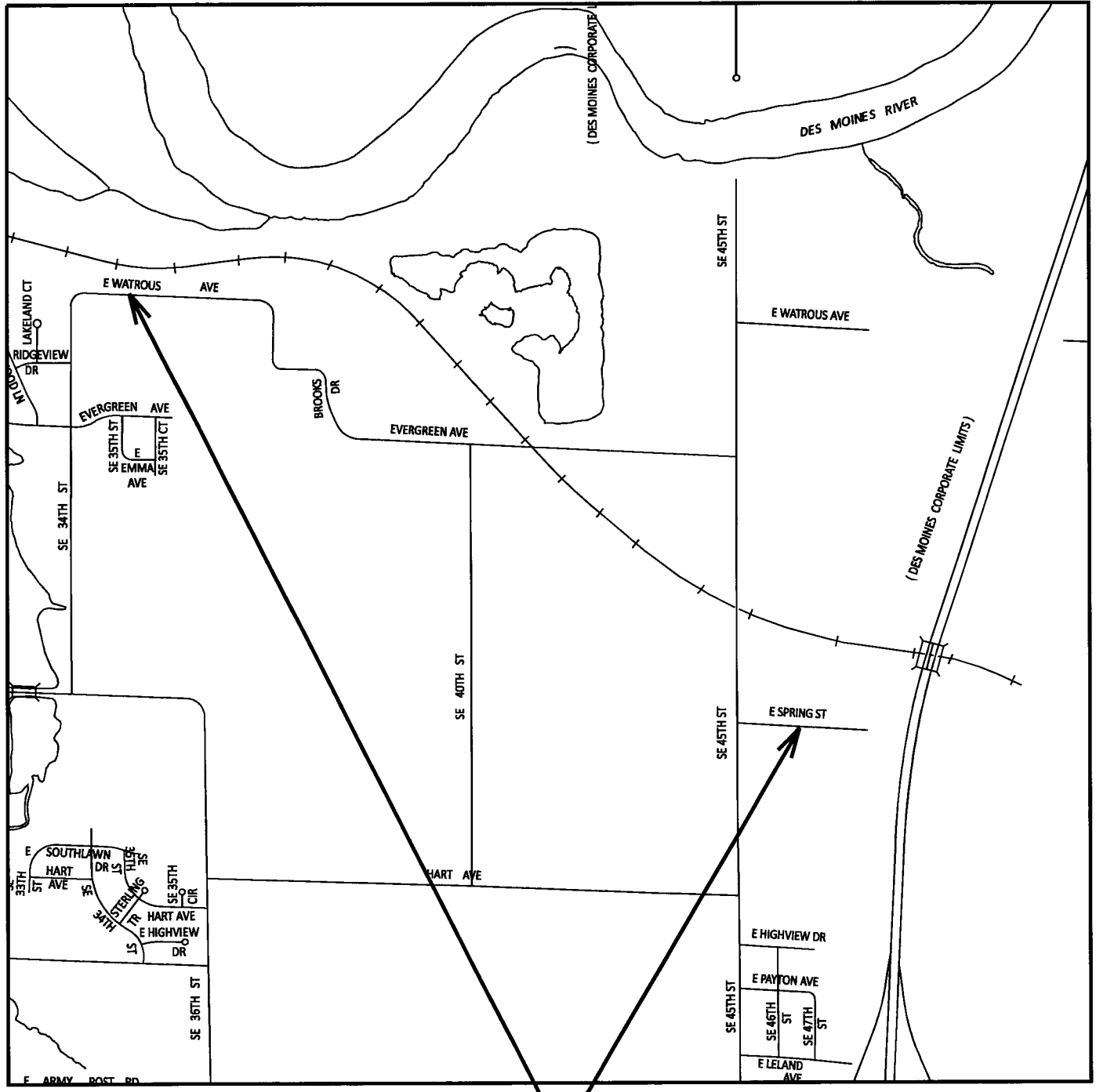
CERTIFICATE

I, DIANE RAUH, City Clerk of said City hereby certify that at a meeting of the City Council of said City of Des Moines, held on the above date, among other proceedings the above was adopted.

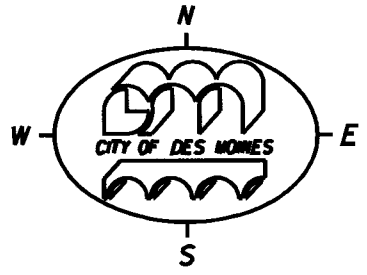
IN WITNESS WHEREOF, I have hereunto set my hand and affixed my seal the day and year first above written.

City Clerk

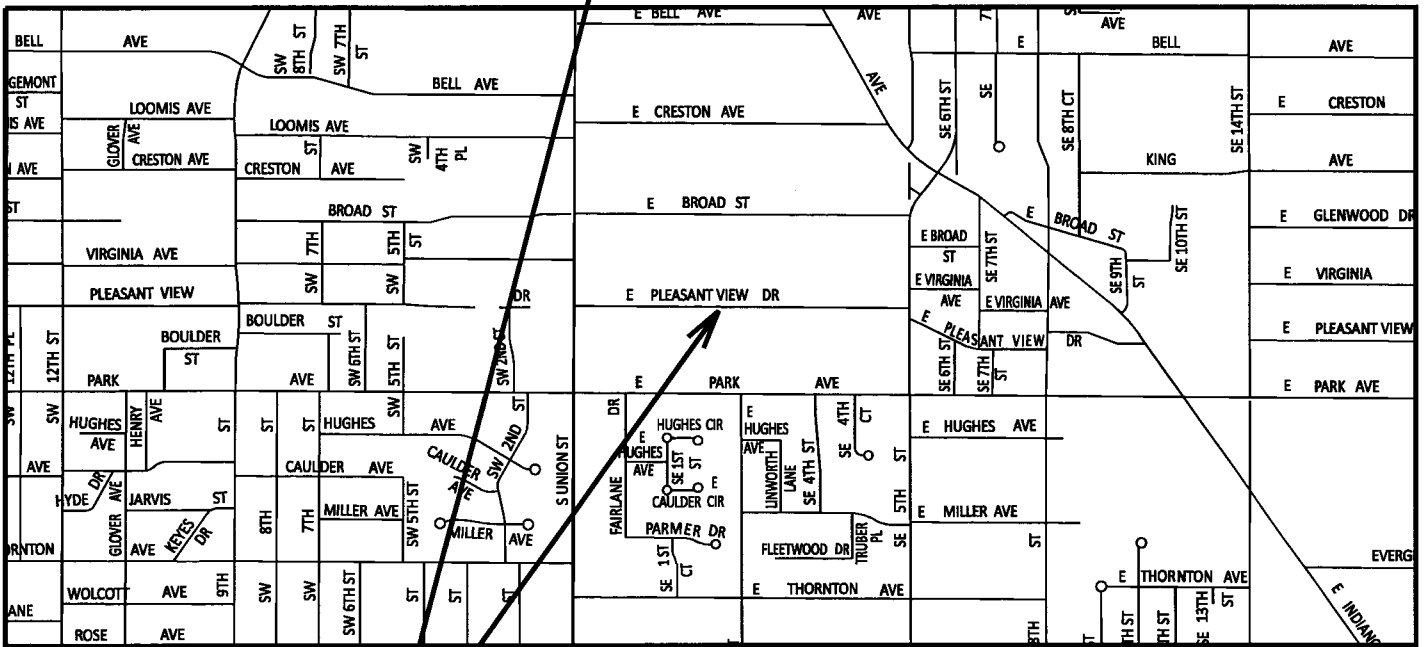
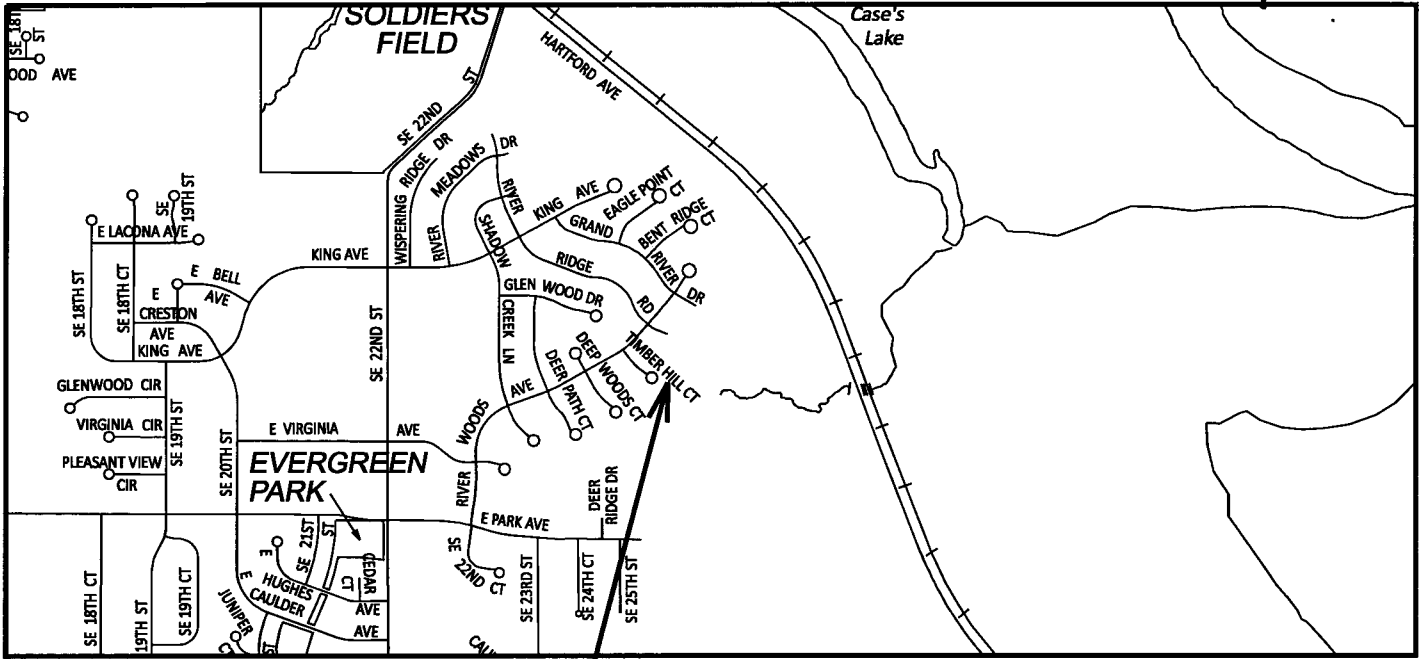
10C



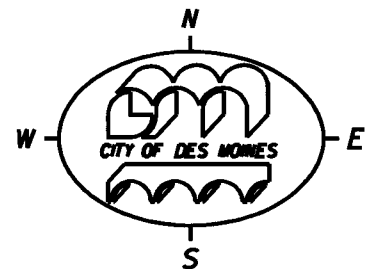
**PROJECT
LOCATIONS**



**2011 SEWER REPAIR - CONTRACT 1
ACTIVITY ID 08-2011-009
PAGE 1 OF 3**

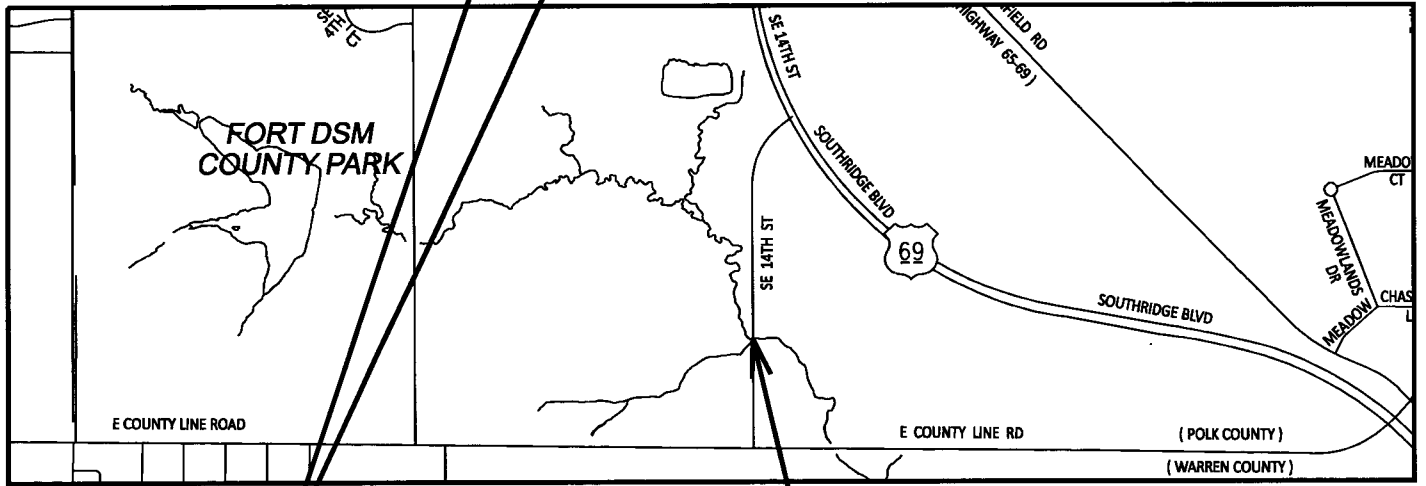
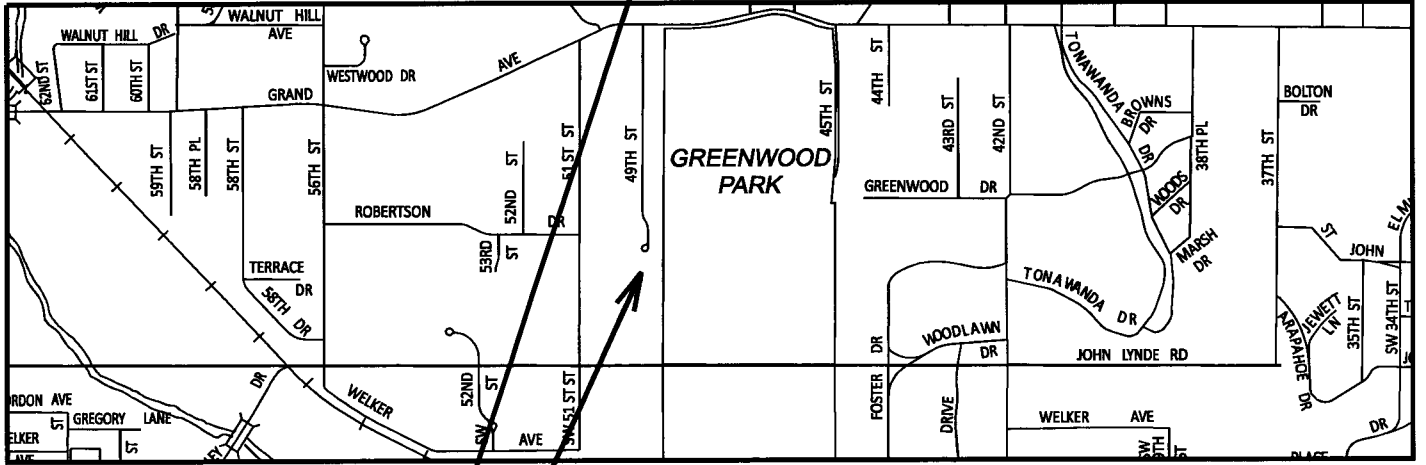
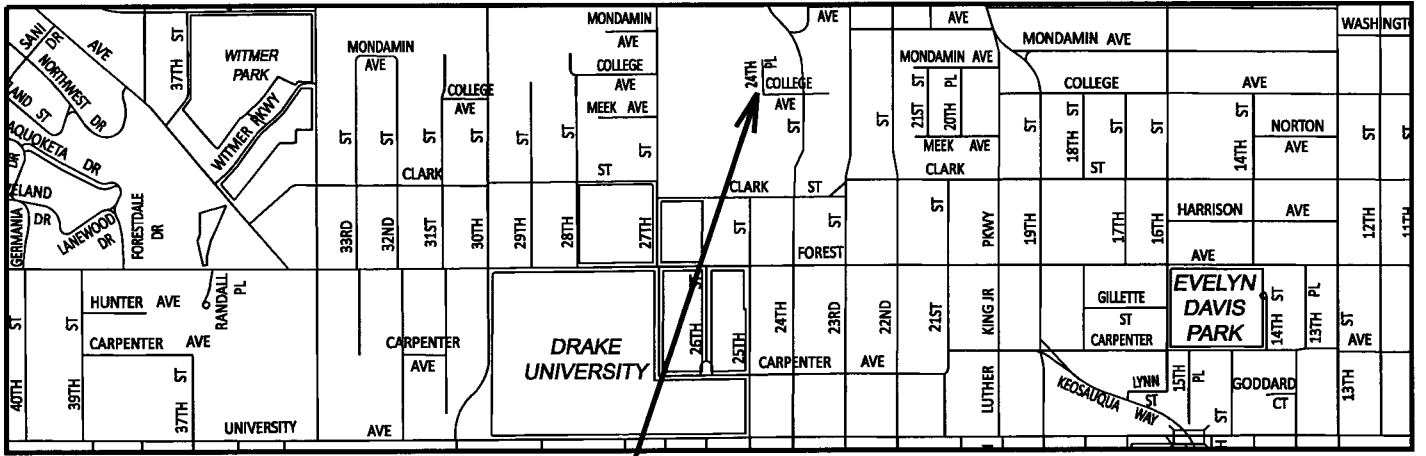


PROJECT LOCATIONS



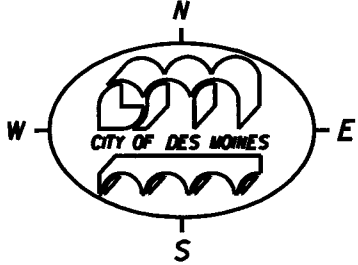
2011 SEWER REPAIR - CONTRACT 1
ACTIVITY ID 08-2011-009
PAGE 2 OF 3

10C



PROJECT

LOCATIONS



2011 SEWER REPAIR - CONTRACT 1
 ACTIVITY ID 08-2011-009
 PAGE 3 OF 3



10C

PROJECT SUMMARY

2011 Sewer Repair - Contract 1

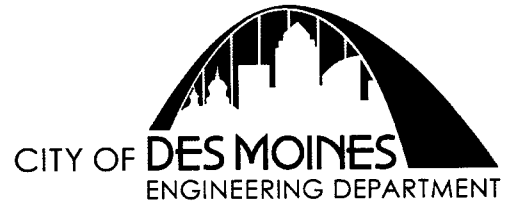
Activity ID 08-2011-009

On November 21, 2011, under Roll Call No. 11-2012, the Council awarded the contract for the above improvements to Van Hauen & Associates, Inc., in the amount of \$775,775.00. Tabulated below is a history of project change orders.

Change Order No.	Initiated By	Description	Amount
1	Engineering	2/24/2012 Removal of E. Watrous from contract, savings on sheeting materials, changes to Greenwood Terrace site, and Lyon Street sanitary sewer repair.	\$(141,102.53)
2	Engineering	3/23/2012 Adjustment of quantities to as-built measurements.	\$(87,447.54)
3	City	6/6/2012 Adjustment of seeding and erosion control quantities to as-built measurements.	\$(15,169.32)
Original Contract Amount			\$775,775.00
Total Change Orders			\$(243,719.39)
Percent of Change Orders to Original Contract			(31.42)%
Total Contract Amount			\$532,055.61

10C

August 13, 2012



CERTIFICATION OF COMPLETION

AGENDA HEADING:

Accepting completed construction and approving final payment for the 2011 Sewer Repair - Contract 1, Van Hauen & Associates, Inc..

SYNOPSIS:

Approve the Engineer's Certification of Completion, accept construction of said improvement, and authorize final payment to the contractor.

FISCAL IMPACT:

Amount: \$532,055.61 As-Built Contract Cost

Funding Source: 2012-2013 CIP, Page Storm - 4, City-wide Storm Water Utility Projects, STE057, Storm Water Utility Funds, Being: \$318,788.60 in FEMA funding; and the remaining \$213,267.01 in Sanitary Sewer Funds from SAE054, City-wide Sanitary Sewers.

CERTIFICATION OF COMPLETION:

On November 21, 2011, under Roll Call No. 11-2012, the City Council awarded a contract to Van Hauen & Associates, Inc., Brian Tancos, President, 1205 SW 37th Street, Grimes, IA 50111 for the construction of the following improvement:

2011 Sewer Repair - Contract 1, 08-2011-009

The improvement includes repair of storm and sanitary sewers, protection of sanitary sewers, installation of manholes, installation of sheet pile & rip rap, grading, restoration of pavement and landscaping, and other incidental items; all work in accordance with the contract documents including Plan File Nos. 535-069/097 at the following locations: 3500 E. Watrous Avenue, 7700 S.E. 14th Street, 228 E. Pleasant View Drive, 4600 E. Spring Street, 3021 Timber Hill Court, 1600 24th Place, and Greenwood Terrace, Des Moines, Iowa

I hereby certify that the construction of said 2011 Sewer Repair - Contract 1, Activity ID 08-2011-009, has been completed in substantial compliance with the terms of said contract, and I hereby recommend that the work be accepted. The work commenced on December 5, 2011, and was completed on July 18, 2012.

I further certify that \$532,055.61 is the total cost of said improvement, of which \$516,093.94 has been paid the Contractor and \$0.00 is now due and is hereby approved as final partial payment for the above project, the remaining balance of \$15,961.67 is to be paid at the end of thirty days, with funds retained for unresolved claims on file in accordance with Iowa Code Chapter 573. The amount of completed work is shown on the attached Estimate of Construction Completed.

A handwritten signature in black ink that reads "Jeb E. Brewer" followed by a small "20" at the end.

Jeb E. Brewer, P.E.
Des Moines City Engineer

**ENGINEERING DEPARTMENT
CITY OF DES MOINES, IOWA**



**ESTIMATE OF CONSTRUCTION COMPLETED
FOR WORK DONE FROM 05/25/12 to 06/05/12
FINAL PAYMENT (PAYMENT NO. 6)**

**PROJECT: 2011 SEWER REPAIR - CONTRACT 1
CONTRACTOR: VAN HAUEN & ASSOCIATES, INC.**

**Activity ID: 08-2011-009
Date: 06/05/12**

LINE NO.	DESCRIPTION	UNIT	UNITS			TOTAL AMOUNT
			ESTIMATED	AUTHORIZED	CONSTRUCTED TO DATE	
	PROJECT 1 - 3500 E. WATROUS AVENUE					
1.01	CONSTRUCTION SURVEY	LS	1.000	0.000	0.000	\$1,900.00
1.02	MOBILIZATION	LS	1.000	0.000	0.000	\$4,000.00
1.03	CLEARING & GRUBBING	AC	0.520	0.000	0.000	\$21,500.00
1.04	TOPSOIL, OFFSITE (FURNISH & PLACE)	CY	725.000	0.000	0.000	\$7.00
1.05	EXCAVATION, CLASS 10, ROADWAY & BORROW (FURNISH & PLACE)	CY	2,005.000	0.000	0.000	\$6.00
1.06	SITE REMOVALS, AS PER PLAN	LS	1.000	0.000	0.000	\$500.00
1.07	REMOVAL OF PAVEMENT	SY	370.000	0.000	0.000	\$6.00
1.08	SPECIAL BACKFILL	CY	70.000	0.000	0.000	\$45.00
1.09	SHLD CONSTRUCTION, EARTH	LF	300.000	0.000	0.000	\$3.00
1.10	TRENCH FOUNDATION	TON	16.000	0.000	0.000	\$30.00
1.11	STORM SEWER, TRENCHED, RCP, CLASS III, 15 IN.	LF	47.000	0.000	0.000	\$65.00
1.12	STORM SEWER, TRENCHED, RCP, CLASS III, 48 IN.	LF	40.000	0.000	0.000	\$175.00
1.13	STORM SEWER, TRENCHED, RCP, CLASS III, 54 IN.	LF	28.000	0.000	0.000	\$235.00
1.14	REMOVAL OF STORM SEWER GREATER THAN 36 IN.	LF	26.000	0.000	0.000	\$15.00
1.15	PIPE APRON, CONCRETE, 15 IN.	EA	1.000	0.000	0.000	\$1,600.00
1.16	PIPE APRON, CONCRETE, 48 IN.	EA	1.000	0.000	0.000	\$4,300.00
1.17	PIPE APRON, CONCRETE, 54 IN.	EA	1.000	0.000	0.000	\$4,800.00
1.18	PREPARATION EXCAVATION FOR TAPPING SLEEVE AND VALVE	LS	1.000	0.000	0.000	\$2,000.00
1.19	WATER MAIN, TRENCHED, RESTRAINED JOINT, PVC C900, DR18, 8 IN.	LF	100.000	0.000	0.000	\$80.00
1.20	WATER MAIN, 8 IN., BEND	EA	3.000	0.000	0.000	\$450.00
1.21	WATER MAIN, 8 IN., CAP	EA	1.000	0.000	0.000	\$350.00
1.22	WATER MAIN, 8-IN., SOLID SLEEVE	EA	1.000	0.000	0.000	\$450.00
1.23	REMOVAL OF WATER MAIN, 8 IN., PVC	LF	72.000	0.000	0.000	\$2.00
1.24	MANHOLE, STORM SEWER, SW-401, 96 IN.	EA	1.000	0.000	0.000	\$10,000.00
1.25	HMA PAVEMENT, 6 IN., IMESAL, PG 64-22	SY	370.000	0.000	0.000	\$44.00
1.26	PAVED SHOULDER, HMA 6 IN.	SY	131.000	0.000	0.000	\$65.00
1.27	DRIVEWAY, GRANULAR	TON	17.000	0.000	0.000	\$22.00
1.28	TRAFFIC CONTROL	LS	1.000	0.000	0.000	\$3,686.00
1.29	CONVENTIONAL SEEDING, TYPE 2 (PERMANENT COOL-SEASON MIXT)	AC	0.560	0.000	0.000	\$3,920.00
1.30	CONVENTIONAL SEEDING, TYPE 5 (RURAL, TEMPORARY EROSION CON	AC	0.600	0.000	0.000	\$1,500.00

10C

LINE NO.	DESCRIPTION	UNIT	UNITS			TOTAL AMOUNT
			ESTIMATED	AUTHORIZED	CONSTRUCTED TO DATE	
1.31	HYDRAULIC SEEDING, FERTILIZING & MULCHING, TYPE 1 (PERMANENT)	SF	1,310.000	0.000	0.000	\$0.40
1.32	TEMPORARY ROLLED EROSION CONTROL PRODUCTS (RECP)	SY	1,462.000	0.000	0.000	\$1.62
1.33	EROSION CONTROL MULCHING, CONVENTIONAL MULCHING	AC	0.600	0.000	0.000	\$700.00
1.34	CHECK DAM, ROCK, INSTALLATION	EA	3.000	0.000	0.000	\$600.00
1.35	CHECK DAM, ROCK, CLEAN-OUT	EA	3.000	0.000	0.000	\$75.00
1.36	CHECK DAM, ROCK, REMOVAL	EA	3.000	0.000	0.000	\$250.00
1.37	SILT FENCE, INSTALLATION	LF	750.000	0.000	0.000	\$2.25
1.38	SILT FENCE, REMOVAL OF SEDIMENT	LF	750.000	0.000	0.000	\$0.40
1.39	SILT FENCE, REMOVAL OF DEVICE	LF	750.000	0.000	0.000	\$0.40
1.40	REVEITEMENT FOR OUTLET PROTECTION, CLASS E, W/ FABRIC	TON	140.000	0.000	0.000	\$50.00
1.41	PAINTED PAVEMENT MARKING, WATERBORNE OR SOLVENT-BASED	STA	5.100	0.000	0.000	\$150.00
1.42	TREE PROTECTION PLAN	LS	1.000	0.000	0.000	\$1,700.00
1.43	TREE PROTECTION FENCE	LF	500.000	0.000	0.000	\$2.25
1.44	PROJECT SIGN SMALL-STANDARD	EA	1.000	0.000	0.000	\$75.00
	PROJECT 2 - 7700 SE 14TH STREET					
2.01	CONSTRUCTION SURVEY	LS	1.000	1.000	1.000	\$600.00
2.02	MOBILIZATION	LS	1.000	1.000	1.000	\$4,000.00
2.03	CLEARING & GRUBBING	AC	0.100	0.100	0.100	\$28,500.00
2.04	TOPSOIL, OFFSITE (FURNISH & PLACE)	CY	62.000	62.000	62.000	\$7.00
2.05	MISCELLANEOUS FLOWABLE MORTAR	CY	30.000	8.000	8.000	\$150.00
2.06	REMOVE & REINSTALL CONCRETE PIPE APRON GREATER THAN 36 IN.	EA	1.000	1.000	1.000	\$1,200.00
2.07	DRIVEWAY, GRANULAR	TON	45.000	15.640	15.640	\$22.00
2.08	TRAFFIC CONTROL	LS	1.000	1.000	1.000	\$1,008.00
2.09	CONVENTIONAL SEEDING, TYPE 2 (PERMANENT COOL-SEASON MIXTU	AC	0.010	0.000	0.000	\$3,920.00
2.10	CONVENTIONAL SEEDING, TYPE 5 (RURAL TEMPORARY EROSION CON	AC	0.050	0.000	0.000	\$1,500.00
2.11	HYDRAULIC SEEDING, FERTILIZING & MULCHING, TYPE 1 (PERMANEN	SF	1,750.000	0.000	0.000	\$0.40
2.12	TEMPORARY ROLLED EROSION CONTROL PRODUCTS (RECP)	SY	100.000	0.000	0.000	\$1.62
2.13	EROSION CONTROL MULCHING, CONVENTIONAL MULCHING	AC	0.050	0.000	0.000	\$700.00
2.14	SILT FENCE, INSTALLATION	LF	150.000	0.000	0.000	\$2.25
2.15	SILT FENCE, REMOVAL OF SEDIMENT	LF	150.000	0.000	0.000	\$0.40
2.16	SILT FENCE, REMOVAL OF DEVICE	LF	150.000	0.000	0.000	\$0.40
2.17	REVEITEMENT FOR BANK STABILIZATION, CLASS E, W/ FABRIC	TON	275.000	280.450	280.450	\$50.00
2.18	TREE PROTECTION PLAN	LS	1.000	1.000	1.000	\$1,700.00
2.19	TREE PROTECTION FENCE	LF	150.000	50.000	50.000	\$2.25
2.20	PROJECT SIGN SMALL-STANDARD	EA	1.000	0.000	0.000	\$75.00
2.21	STEEL SHEET PILE	SF	720.000	0.000	0.000	\$35.00
	PROJECT 3 - 228 E. PLEASANT VIEW DRIVE					
3.01	MOBILIZATION	LS	1.000	1.000	1.000	\$4,000.00
3.02	TOPSOIL, OFFSITE (FURNISH & PLACE)	CY	125.000	125.000	125.000	\$7.00
3.03	SITE REMOVALS, AS PER PLAN	LS	1.000	1.000	1.000	\$500.00

10C

LINE NO.	DESCRIPTION	UNIT	UNITS			UNIT PRICE	TOTAL AMOUNT
			ESTIMATED	AUTHORIZED	CONSTRUCTED TO DATE		
3.04	MISCELLANEOUS FLOWABLE MORTAR	CY	20.000	0.000	0.000	\$150.00	\$0.00
3.05	SEWAGE BYPASSING	LS	1.000	1.000	1.000	\$500.00	\$500.00
3.06	TRAFFIC CONTROL	LS	1.000	1.000	1.000	\$2,053.00	\$2,053.00
3.07	HYDRAULIC SEEDING, FERTILIZING & MULCHING, TYPE 1 (PERMANENT)	SF	4,500.000	550.000	550.000	\$0.40	\$220.00
3.08	REMOVE & REINSTALL WOOD FENCE	LF	33.000	32.000	32.000	\$25.00	\$800.00
3.09	PROJECT SIGN SMALL-STANDARD	EA	1.000	0.000	0.000	\$75.00	\$0.00
3.10	SHALLOW DEPTH CONCRETE OVERLAY	SF	335.000	360.000	360.000	\$55.00	\$19,800.00
3.11	SHALLOW DEPTH CONCRETE REPAIR	SF	200.000	15.380	15.380	\$65.00	\$999.70
3.12	DEEP CONCRETE REPAIR	SF	120.000	170.150	170.150	\$85.00	\$14,462.75
3.13	DEEP RECONSTRUCTION REPAIR	SF	65.000	40.580	40.580	\$110.00	\$4,463.80
3.14	HEADWALL ANCHORS	EA	6.000	6.000	6.000	\$4,500.00	\$27,000.00
	PROJECT 4 - 4600 E. SPRING STREET						
4.01	CONSTRUCTION SURVEY	LS	1.000	1.000	1.000	\$1,500.00	\$1,500.00
4.02	MOBILIZATION	LS	1.000	1.000	1.000	\$4,000.00	\$4,000.00
4.03	CLEARING & GRUBBING	AC	0.350	0.350	0.350	\$22,000.00	\$7,700.00
4.04	TOPSOIL, OFFSITE (FURNISH & PLACE)	CY	390.000	390.000	390.000	\$7.00	\$2,730.00
4.05	EXCAVATION, CLASS 10, ROADWAY & BORROW (FURNISH & PLACE)	CY	310.000	310.000	310.000	\$6.00	\$1,860.00
4.06	REMOVAL OF PAVEMENT	SY	235.000	44.440	44.440	\$6.00	\$266.64
4.07	SPECIAL BACKFILL	CY	46.000	46.000	46.000	\$45.00	\$2,070.00
4.08	SHLD CONSTRUCTION, EARTH	LF	200.000	200.000	200.000	\$2.00	\$400.00
4.09	MISCELLANEOUS FLOWABLE MORTAR	CY	5.000	6.000	6.000	\$150.00	\$900.00
4.10	STORM SEWER, TRENCHED, RCP, CLASS III, 24 IN.	LF	81.000	80.000	80.000	\$90.00	\$7,200.00
4.11	STORM SEWER, TRENCHED, RCP, CLASS III, 36 IN.	LF	40.000	40.000	40.000	\$115.00	\$4,600.00
4.12	REMOVAL OF STORM SEWER LESS THAN OR EQUAL TO 36 IN.	LF	110.000	110.000	110.000	\$5.00	\$550.00
4.13	PIPE APRON, CONCRETE, 24 IN.	EA	1.000	1.000	1.000	\$2,200.00	\$2,200.00
4.14	PIPE APRON, CONCRETE, 36 IN.	EA	1.000	1.000	1.000	\$3,300.00	\$3,300.00
4.15	SUBDRAIN, PVC, CASE D, 6 IN.	LF	300.000	242.000	242.000	\$20.00	\$4,840.00
4.16	SUBDRAIN CLEANOUT, TYPE A-1	EA	6.000	6.000	6.000	\$350.00	\$2,100.00
4.17	SUBDRAIN OUTLET	EA	2.000	2.000	2.000	\$150.00	\$300.00
4.18	MANHOLE, STORM SEWER, SW-401, 60 IN.	EA	1.000	1.000	1.000	\$6,300.00	\$6,300.00
4.19	HMA PAVEMENT, 6 IN., 1M ESAL, PG 64-22	SY	235.000	0.000	0.000	\$58.00	\$0.00
4.20	TRAFFIC CONTROL	LS	1.000	1.000	1.000	\$1,455.00	\$1,455.00
4.21	CONVENTIONAL SEEDING, TYPE 2 (PERMANENT COOL-SEASON MIXTU	AC	0.320	0.265	0.265	\$3,920.00	\$1,038.80
4.22	CONVENTIONAL SEEDING, TYPE 5 (RURAL TEMPORARY EROSION CON	AC	0.320	0.000	0.000	\$1,500.00	\$0.00
4.23	TEMPORARY ROLLED EROSION CONTROL PRODUCTS (RECT)	SY	1,160.000	0.000	0.000	\$1.62	\$0.00
4.24	EROSION CONTROL MULCHING, CONVENTIONAL MULCHING	AC	0.320	0.000	0.000	\$700.00	\$0.00
4.25	CHECK DAM, ROCK, INSTALLATION	EA	3.000	0.000	0.000	\$600.00	\$0.00
4.26	CHECK DAM, ROCK, CLEAN-OUT	EA	3.000	0.000	0.000	\$75.00	\$0.00
4.27	CHECK DAM, ROCK, REMOVAL	EA	3.000	0.000	0.000	\$250.00	\$0.00
4.28	SILT FENCE, INSTALLATION	LF	500.000	0.000	0.000	\$2.25	\$0.00

LINE NO.	DESCRIPTION	UNIT	UNITS			UNIT PRICE	TOTAL AMOUNT
			ESTIMATED	AUTHORIZED	CONSTRUCTED TO DATE		
4.29	SILT FENCE, REMOVAL OF SEDIMENT	LF	500.000	0.000	0.000	\$0.40	\$0.00
4.30	SILT FENCE, REMOVAL OF DEVICE	LF	500.000	0.000	0.000	\$0.40	\$0.00
4.31	REVEITEMENT FOR OUTLET PROTECTION, CLASS E, W/ FABRIC	TON	81.000	85.390	85.390	\$50.00	\$4,269.50
4.32	REMOVE & REINSTALL FIELD FENCE	LF	125.000	125.000	125.000	\$15.00	\$1,875.00
4.33	TEMPORARY GRANULAR SURFACING	TON	84.000	32.720	32.720	\$22.00	\$719.84
4.34	TREE PROTECTION PLAN	LS	1.000	1.000	1.000	\$1,700.00	\$1,700.00
4.35	TREE PROTECTION FENCE	LF	250.000	60.000	60.000	\$2.25	\$135.00
4.36	PROJECT SIGN SMALL-STANDARD	EA	1.000	0.000	0.000	\$75.00	\$0.00
	PROJECT 5 - 3021 TIMBER HILL COURT						
5.01	CONSTRUCTION SURVEY	LS	1.000	1.000	1.000	\$1,400.00	\$1,400.00
5.02	MOBILIZATION	LS	1.000	1.000	1.000	\$4,000.00	\$4,000.00
5.03	CLEARING & GRUBBING	AC	0.380	0.380	0.380	\$19,500.00	\$7,410.00
5.04	TOPSOIL, OFFSITE (FURNISH & PLACE)	CY	305.000	305.000	305.000	\$7.00	\$2,135.00
5.05	EXCAVATION, CLASS 10, ROADWAY & BORROW (FURNISH & PLACE)	CY	560.000	560.000	560.000	\$6.00	\$3,360.00
5.06	SITE REMOVALS, AS PER PLAN	LS	1.000	1.000	1.000	\$250.00	\$250.00
5.07	SANITARY SEWER STREAM CROSSING ENCASUREMENT	LS	1.000	0.000	0.000	\$70,000.00	\$0.00
5.08	CONVENTIONAL SEEDING, TYPE 2 (PERMANENT COOL-SEASON MIXTU	AC	0.200	0.127	0.127	\$3,920.00	\$497.84
5.09	CONVENTIONAL SEEDING, TYPE 5 (RURAL TEMPORARY EROSION CON	AC	0.250	0.000	0.000	\$1,500.00	\$0.00
5.10	HYDRAULIC SEEDING, FERTILIZING & MULCHING, TYPE 1 (PERMANEN	SF	1,800.000	0.000	0.000	\$0.40	\$0.00
5.11	TEMPORARY ROLLED EROSION CONTROL PRODUCTS (RECP)	SY	325.000	186.660	186.660	\$1.62	\$302.39
5.12	EROSION CONTROL MULCHING, CONVENTIONAL MULCHING	AC	0.250	0.000	0.000	\$700.00	\$0.00
5.13	SILT FENCE, INSTALLATION	LF	600.000	0.000	0.000	\$2.25	\$0.00
5.14	SILT FENCE, REMOVAL OF SEDIMENT	LF	600.000	0.000	0.000	\$0.40	\$0.00
5.15	SILT FENCE, REMOVAL OF DEVICE	LF	600.000	0.000	0.000	\$0.40	\$0.00
5.16	STABILIZED CONSTRUCTION ENTRANCE	TON	65.000	48.010	48.010	\$28.00	\$1,344.28
5.17	REVEITEMENT FOR BANK STABILIZATION, CLASS E, W/ FABRIC	TON	775.000	731.580	731.580	\$50.00	\$36,579.00
5.18	SCOUR STOP REVETMENT, OUTLET PROTECTION	SY	25.000	39.100	39.100	\$25.00	\$977.50
5.19	CONSTRUCTION ACCESS & STAGING	LS	1.000	1.000	1.000	\$2,000.00	\$2,000.00
5.20	TREE PROTECTION PLAN	LS	1.000	1.000	1.000	\$1,700.00	\$1,700.00
5.21	TREE PROTECTION FENCE	LF	1,000.000	360.000	360.000	\$2.25	\$810.00
5.22	PROJECT SIGN SMALL-STANDARD	EA	1.000	0.000	0.000	\$75.00	\$0.00
	PROJECT 8 - 1600 24TH PLACE						
8.01	CONSTRUCTION SURVEY	LS	1.000	1.000	1.000	\$1,200.00	\$1,200.00
8.02	MOBILIZATION	LS	1.000	1.000	1.000	\$4,000.00	\$4,000.00
8.03	CLEARING & GRUBBING	AC	0.300	0.300	0.300	\$24,000.00	\$7,200.00
8.04	TOPSOIL, OFFSITE (FURNISH & PLACE)	CY	365.000	365.000	365.000	\$7.00	\$2,555.00
8.05	EXCAVATION, CLASS 10, ROADWAY & BORROW (FURNISH & PLACE)	CY	680.000	680.000	680.000	\$6.00	\$4,080.00
8.06	SITE REMOVALS, AS PER PLAN	LS	1.000	1.000	1.000	\$250.00	\$250.00
8.07	REMOVAL OF PAVED DRIVEWAY	SY	86.000	35.310	35.310	\$4.00	\$141.24
8.08	TRENCH FOUNDATION	TON	32.000	0.000	0.000	\$22.00	\$0.00

LINE NO.	DESCRIPTION	UNIT	UNITS			UNIT PRICE	TOTAL AMOUNT
			ESTIMATED	AUTHORIZED	CONSTRUCTED TO DATE		
8.09	STABILIZATION MATERIAL	TON	30.000	0.000	0.000	\$22.00	\$0.00
8.10	STORM SEWER, TRENCHED, RCP, CLASS III, 24 IN.	LF	50.000	50.000	50.000	\$80.00	\$4,000.00
8.11	STORM SEWER, TRENCHED, RCP, CLASS III, 30 IN.	LF	32.000	32.000	32.000	\$120.00	\$3,840.00
8.12	REMOVAL OF STORM SEWER LESS THAN OR EQUAL TO 36 IN.	LF	14.000	5.000	5.000	\$5.00	\$25.00
8.13	PIPE APRON, CONCRETE, 30 IN.	EA	1.000	1.000	1.000	\$2,500.00	\$2,500.00
8.14	MANHOLE, STORM SEWER, SW-401, 48 IN.	EA	1.000	1.000	1.000	\$3,200.00	\$3,200.00
8.15	MANHOLE, STORM SEWER, SW-401, 60 IN.	EA	1.000	1.000	1.000	\$4,500.00	\$4,500.00
8.16	DRIVEWAY, PAVED, PCC, 6 IN.	SY	86.000	35.310	35.310	\$45.00	\$1,588.95
8.17	TRAFFIC CONTROL	LS	1.000	1.000	1.000	\$800.00	\$800.00
8.18	CONVENTIONAL SEEDING, TYPE 2 (PERMANENT COOL-SEASON MIXTU	AC	0.180	0.200	0.200	\$3,920.00	\$784.00
8.19	CONVENTIONAL SEEDING, TYPE 5 (RURAL TEMPORARY EROSION CON	AC	0.300	0.000	0.000	\$1,500.00	\$0.00
8.20	HYDRAULIC SEEDING, FERTILIZING & MULCHING, TYPE 1 (PERMANEN	SF	5,250.000	920.000	920.000	\$0.40	\$368.00
8.21	TEMPORARY ROLLED EROSION CONTROL PRODUCTS (RECP)	SY	315.000	453.330	453.330	\$1.62	\$734.39
8.22	EROSION CONTROL MULCHING, CONVENTIONAL MULCHING	AC	0.300	0.000	0.000	\$700.00	\$0.00
8.23	CHECK DAM, ROCK, INSTALLATION	EA	1.000	0.000	0.000	\$600.00	\$0.00
8.24	CHECK DAM, ROCK, CLEAN-OUT	EA	1.000	0.000	0.000	\$75.00	\$0.00
8.25	CHECK DAM, ROCK, REMOVAL	EA	1.000	0.000	0.000	\$250.00	\$0.00
8.26	SILT FENCE, INSTALLATION	LF	350.000	0.000	0.000	\$2.25	\$0.00
8.27	SILT FENCE, REMOVAL OF SEDIMENT	LF	350.000	0.000	0.000	\$0.40	\$0.00
8.28	SILT FENCE, REMOVAL OF DEVICE	LF	350.000	0.000	0.000	\$0.40	\$0.00
8.29	REVEITEMENT FOR OUTLET PROTECTION, CLASS E, W/ FABRIC	TON	100.000	54.690	54.690	\$45.00	\$2,461.05
8.30	CONSTRUCTION ACCESS & STAGING	LS	1.000	1.000	1.000	\$2,000.00	\$2,000.00
8.31	TREE PROTECTION PLAN	LS	1.000	1.000	1.000	\$1,700.00	\$1,700.00
8.32	TREE PROTECTION FENCE	LF	500.000	162.000	162.000	\$2.25	\$364.50
8.33	PROJECT SIGN SMALL-STANDARD	EA	1.000	1.000	1.000	\$75.00	\$75.00
	PROJECT 15 - GREENWOOD TERRACE						
15.01	CONSTRUCTION SURVEY	LS	1.000	1.000	1.000	\$1,400.00	\$1,400.00
15.02	MOBILIZATION	LS	1.000	1.000	1.000	\$4,000.00	\$4,000.00
15.03	CLEARING & GRUBBING	AC	0.350	0.350	0.350	\$27,000.00	\$9,450.00
15.04	TOPSOIL, OFFSITE (FURNISH & PLACE)	CY	365.000	365.000	365.000	\$7.00	\$2,555.00
15.05	EXCAVATION, CLASS 10, ROADWAY & BORROW (FURNISH & PLACE)	CY	250.000	250.000	250.000	\$6.00	\$1,500.00
15.06	SITE REMOVALS, AS PER PLAN	LS	1.000	1.000	1.000	\$250.00	\$250.00
15.07	SANITARY SEWER GRAVITY MAIN, TRENCHED, 8 IN.	LF	154.000	0.000	0.000	\$45.00	\$0.00
15.08	SANITARY SEWER SERVICE STUB WITH RISER, PVC, 4 IN.	LF	116.000	11.000	11.000	\$40.00	\$440.00
15.09	REMOVAL OF SANITARY SEWER EQUAL TO OR LESS THAN 36 IN.	LF	154.000	115.000	115.000	\$2.00	\$230.00
15.10	STORM SEWER, TRENCHED, RCP, CLASS III, 15 IN.	LF	28.000	0.000	0.000	\$70.00	\$0.00
15.11	REMOVAL OF STORM SEWER LESS THAN OR EQUAL TO 36 IN.	LF	28.000	24.000	24.000	\$5.00	\$120.00
15.12	REMOVE & REINSTALL CONCRETE PIPE APRON LESS THAN OR EQUAL	EA	1.000	1.000	1.000	\$1,200.00	\$1,200.00
15.13	PIPE APRON, CONCRETE, 15 IN.	EA	1.000	0.000	0.000	\$2,100.00	\$0.00
15.14	SANITARY SEWER STREAM CROSSING ENCASEMENT	LS	1.000	0.000	0.000	\$100,000.00	\$0.00

LINE NO.	DESCRIPTION	UNIT	UNITS			TOTAL AMOUNT
			ESTIMATED	AUTHORIZED	CONSTRUCTED TO DATE	
15.15	SEWAGE BYPASSING	LS	1.000	1.000	1.000	\$500.00
15.16	MANHOLE, SANITARY SEWER, SW-301, 48 IN.	EA	1.000	1.000	1.000	\$2,900.00
15.17	MANHOLE, STORM SEWER, SW-401, 48 IN.	EA	1.000	0.000	0.000	\$2,900.00
15.18	REMOVE MANHOLE	EA	1.000	1.000	1.000	\$350.00
15.19	CONVENTIONAL SEEDING, TYPE 2 (PERMANENT COOL-SEASON MIXTU	AC	0.200	0.200	0.200	\$3,920.00
15.20	CONVENTIONAL SEEDING, TYPE 5 (RURAL TEMPORARY EROSION CON	AC	0.300	0.000	0.000	\$1,500.00
15.21	HYDRAULIC SEEDING, FERTILIZING & MULCHING, TYPE 1 (PERMANEN	SF	4,000.000	0.000	0.000	\$0.40
15.22	TEMPORARY ROLLED EROSION CONTROL PRODUCTS (RECP)	SY	165.000	0.000	0.000	\$1.62
15.23	EROSION CONTROL MULCHING, CONVENTIONAL MULCHING	AC	0.300	0.000	0.000	\$700.00
15.24	CHECK DAM, ROCK, INSTALLATION	EA	2.000	0.000	0.000	\$600.00
15.25	CHECK DAM, ROCK, CLEAN-OUT	EA	2.000	0.000	0.000	\$75.00
15.26	CHECK DAM, ROCK, REMOVAL	EA	2.000	0.000	0.000	\$250.00
15.27	SILT FENCE, INSTALLATION	LF	500.000	0.000	0.000	\$2.25
15.28	SILT FENCE, REMOVAL OF SEDIMENT	LF	500.000	0.000	0.000	\$0.40
15.29	SILT FENCE, REMOVAL OF DEVICE	LF	500.000	0.000	0.000	\$0.40
15.30	STABILIZED CONSTRUCTION ENTRANCE	TON	65.000	48.230	48.230	\$28.00
15.31	REVETMENT FOR BANK STABILIZATION, CLASS E, W/ FABRIC	TON	700.000	35.710	35.710	\$50.00
15.32	REVETMENT FOR OUTLET PROTECTION, CLASS E, W/ FABRIC	TON	40.000	30.100	30.100	\$50.00
15.33	CONSTRUCTION ACCESS & STAGING	LS	1.000	1.000	1.000	\$7,280.36
15.34	TREE PROTECTION PLAN	LS	1.000	1.000	1.000	\$1,700.00
15.35	TREE PROTECTION FENCE	LF	200.000	442.000	442.000	\$2.25
15.36	PROJECT SIGN SMALL-STANDARD	EA	1.000	0.000	0.000	\$75.00
	CHANGE ORDERS					
2.22	STEEL SHEET PILE	SF	0.000	640.000	640.000	\$32.50
3.15	ROUTE AND SEAL CRACK IN HEADWALL	LS	0.000	1.000	1.000	\$200.00
5.23	SANITARY SEWER STREAM CROSSING ENCASEMENT	LS	0.000	1.000	1.000	\$65,500.00
15.37	SANITARY SEWER GRAVITY MAIN, TRENCHED, 8 IN. DIP	LF	0.000	115.000	115.000	\$84.25
15.38	SHEETING - MATERIAL ONLY	SF	0.000	3,300.000	3,300.000	\$15.11
15.39	MANHOLE, STORM SEWER, SW-401, 48 IN. - MATERIAL ONLY	EACH	0.000	1.000	1.000	\$542.25
15.40	SANITARY SEWER STREAM CROSSING ENCASEMENT	LS	0.000	1.000	1.000	\$40,635.40
20.01	LYON STREET SINK HOLE REPAIR	LS	0.000	1.000	1.000	\$23,202.21
3.16	CONCRETE REMOVAL FOR INSTALLATION OF HEADWALL ANCHORS	LS	0.000	1.000	1.000	\$1,829.58
5.24	SOD INSTALLATION	SQ	0.000	9.780	9.780	\$55.00
8.34	TURF REINFORCEMENT MAT INSTALLATION	SY	0.000	96.210	96.210	\$7.00

LINE NO.	DESCRIPTION	UNIT	UNITS		CONSTRUCTED TO DATE	UNIT PRICE	TOTAL AMOUNT
			ESTIMATED	AUTHORIZED			
	TOTAL CONTRACT AMOUNT PLUS CHANGE ORDERS		\$532,055.61				
	PARTIAL PAYMENT #1		\$79,075.12				
	PARTIAL PAYMENT #2		\$264,999.72				
	PARTIAL PAYMENT #3		\$106,431.42				
	PARTIAL PAYMENT #4		\$54,566.29				
	PARTIAL PAYMENT #5		\$11,021.39				
	THIS PARTIAL PAYMENT		\$0.00				
	TOTAL PARTIAL PAYMENTS		\$516,093.94				
	BALANCE		\$15,961.67				
	TOTAL						\$532,055.61
	RETAINAGE						\$15,961.67
	TOTAL LESS RETAINAGE						\$516,093.94
	LESS PREVIOUS PAYMENT						\$516,093.94
	AMOUNT DUE						\$0.00

FINAL PAYMENT (PAYMENT NO. 6)

PREPARED BY: *Leah Z. Ecker*
 CHECKED BY: *Henry M. Manka*