

Date August 13, 2012

APPROVING FINAL SUBDIVISION PLAT OF WOODSIDE ESTATES WEST PLAT 8

WHEREAS, the final subdivision plat entitled **Woodside Estates West Plat 8**, for land located in the vicinity of 5564 NW 3rd Court in unincorporated Polk County, to be developed by Woodside Estates North, LLC, represented by Craig Torgerson, Officer, was submitted on July 27, 2012; and,

WHEREAS, the plat is located in unincorporated Polk County within the 2-mile review area outside the Des Moines city limits, and Polk County is responsible for enforcement of any requirements placed on the plat; and

WHEREAS, all necessary attachments are subject to review and approved by the Polk County Legal Department for conformance with Iowa Code Sections 354.8, 354.6, and 354.11,

NOW THEREFORE, BE IT RESOLVED by the City Council of the City of Des Moines, Iowa, that:

1. It is hereby determined that the subdivision plat entitled Woodside Estates West Plat 8 conforms to the City of Des Moines platting requirements, and will not unduly burden public improvements in the area and will provide an appropriate balance of interests between current proprietors, future purchasers and the public interest.
2. The Mayor and City Clerk are hereby authorized and directed to execute approval of all copies of said subdivision plat as appropriate.
3. The City Clerk is directed to provide an approved copy of the subdivision plat and a certified copy of this resolution to the Physical Planning Division of the Polk County Engineering Department, to the City Community Development Department and to City Land Records.

MOVED by _____ to adopt.

FORM APPROVED: Roger K. Brown Council Communication No. 12- 409
Roger K. Brown, Assistant City Attorney

COUNCIL ACTION	YEAS	NAYS	PASS	ABSENT
COWNIE				
COLEMAN				
GRIESS				
HENSLEY				
MAHAFFEY				
MEYER				
MOORE				
TOTAL				
MOTION CARRIED			APPROVED	
_____ Mayor				

CERTIFICATE

I, DIANE RAUH, City Clerk of said City hereby certify that at a meeting of the City Council of said City of Des Moines, held on the above date, among other proceedings the above was adopted.

IN WITNESS WHEREOF, I have hereunto set my hand and affixed my seal the day and year first above written.

_____ City Clerk

WOODSIDE ESTATES WEST PLAT NO.8

FINAL PLAT

WOODSIDE ESTATES WEST PLAT NO. 8
 CIVIL DESIGN ADVANTAGE
 ENGINEER: ---
 TECH: ---

3405 SE CROSSROADS DRIVE, SUITE G
 GRIMES, IOWA 50111
 PH: (515) 368-4400 FAX: (515) 369-4410

ENGINEER: ---
 TECH: ---

WOODSIDE ESTATES NORTH, L10
 807 NE 57th AVENUE
 GRIMES, IOWA 50111
 PHONE NUMBER: 515-208-4440

LOT 1 THROUGH 12, WOODSIDE
 ESTATES WEST PLAT NO. 8, AN OFFICIAL
 PLAT, POLK COUNTY, IOWA

BULK REGULATIONS:
 STRUCK:
 FRONT: 35'
 REAR: 35'
 SIDE: 10'

ZONING:
 LDK - LOW DENSITY RESIDENTIAL DISTRICT

ENGINEER/SURVEYOR:
 CIVIL DESIGN ADVANTAGE
 3405 SE CROSSROADS DR. SUITE G
 GRIMES, IOWA 50111

DATE OF SURVEY:
 JUNE, 2012

AREA SUMMARY:
 TOTAL PROJECT = 1.81 ACRES (83,044 SQUARE FEET)

LEGEND:
 SECTION CORNER AS NOTED
 5/8" DIA. PINE YELLOW CAP #11962
 1/2" REBAR YELLOW CAP #16747
 (UNLESS OTHERWISE NOTED)
 P M R D
 MEASURED BEARING & DISTANCE
 DECEDED BEARING & DISTANCE
 MINIMUM OPENING ELEVATION
 ADDRESS
 CENTRELINE
 SECTION LINE
 EASEMENT LINE

REVISIONS
 DATE
 REVISIONS
 DATE

REVISIONS
 DATE

REVISIONS
 DATE

REVISIONS
 DATE

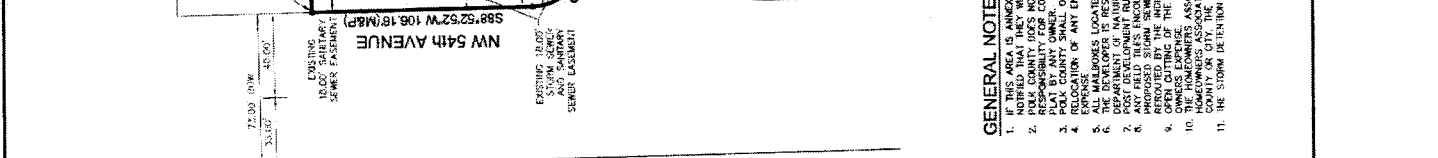
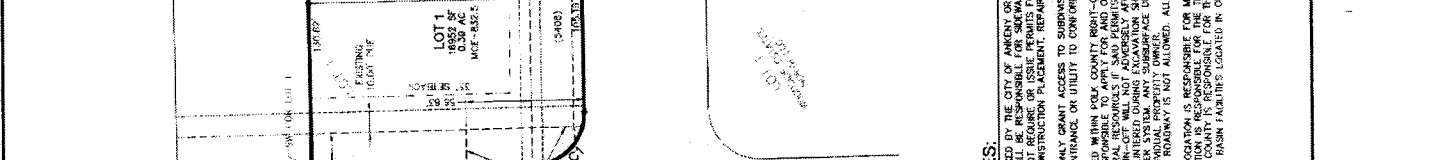
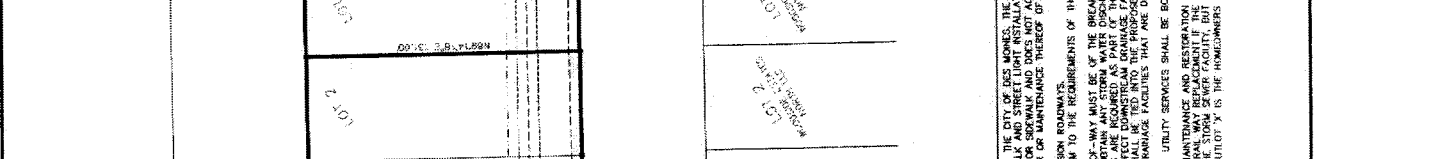
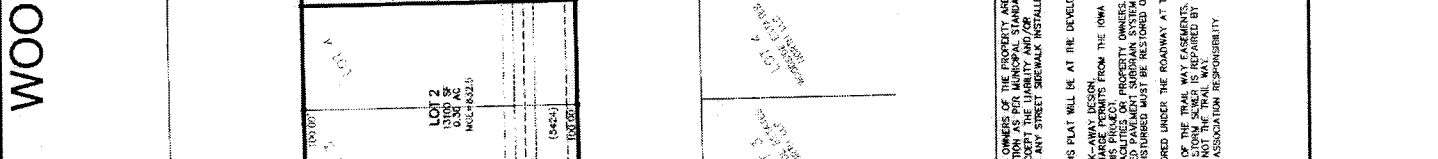
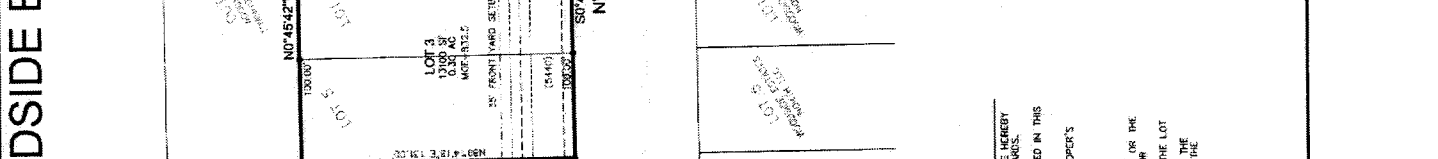
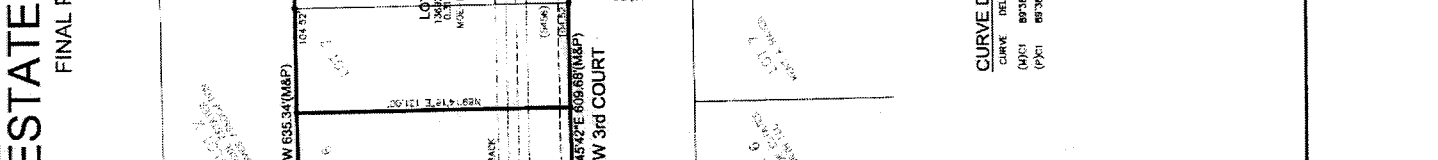
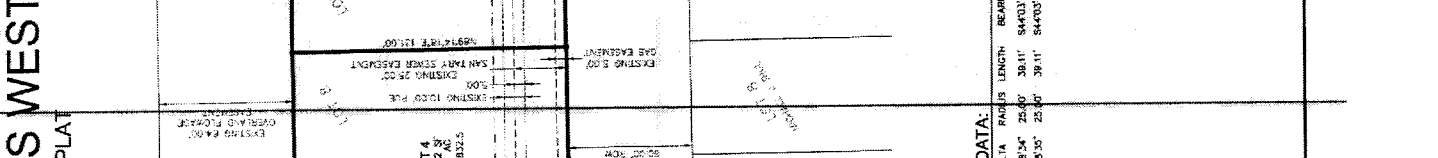
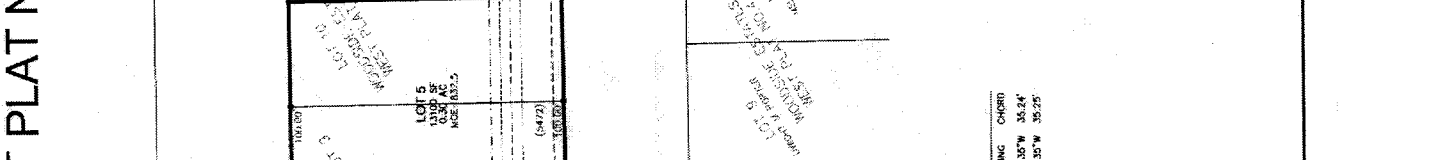
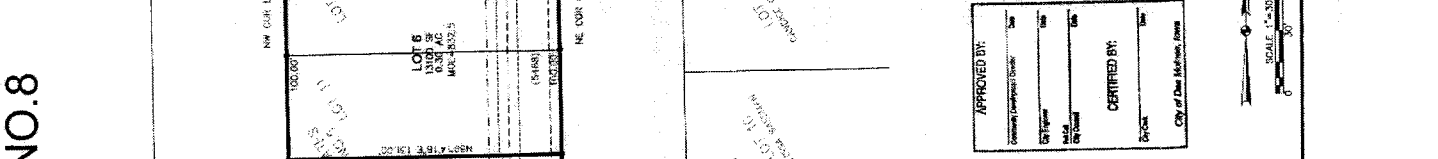
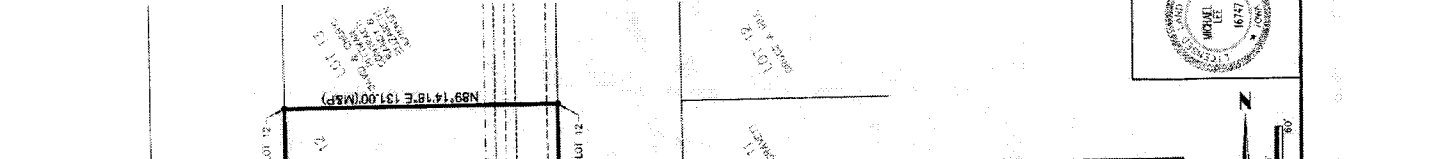
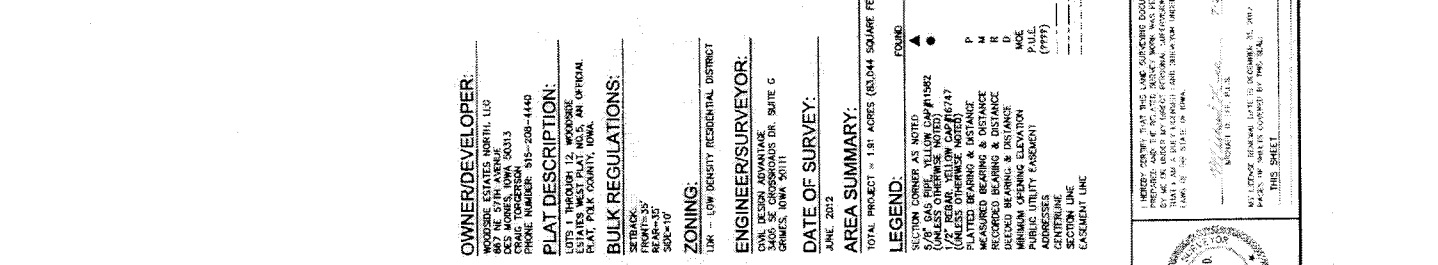
REVISIONS
 DATE

REVISIONS
 DATE

REVISIONS
 DATE

REVISIONS
 DATE

REVISIONS
 DATE



OWNER/DEVELOPER:
 WOODSIDE ESTATES NORTH, L10
 807 NE 57th AVENUE
 GRIMES, IOWA 50111
 PHONE NUMBER: 515-208-4440

LOT 1
 16952 SF
 0.38 AC
 MCL-832.5

LOT 2
 16952 SF
 0.38 AC
 MCL-832.5

LOT 3
 16952 SF
 0.38 AC
 MCL-832.5

LOT 4
 16952 SF
 0.38 AC
 MCL-832.5

LOT 5
 16952 SF
 0.38 AC
 MCL-832.5

LOT 6
 16952 SF
 0.38 AC
 MCL-832.5

LOT 7
 16952 SF
 0.38 AC
 MCL-832.5

LOT 8
 16952 SF
 0.38 AC
 MCL-832.5

LOT 9
 16952 SF
 0.38 AC
 MCL-832.5

LOT 10
 16952 SF
 0.38 AC
 MCL-832.5

LOT 11
 16952 SF
 0.38 AC
 MCL-832.5

LOT 12
 16952 SF
 0.38 AC
 MCL-832.5

LOT 12
 16952 SF
 0.38 AC
 MCL-832.5

LOT 12
 16952 SF
 0.38 AC
 MCL-832.5

LOT 12
 16952 SF
 0.38 AC
 MCL-832.5

LOT 12
 16952 SF
 0.38 AC
 MCL-832.5

LOT 12
 16952 SF
 0.38 AC
 MCL-832.5

LOT 12
 16952 SF
 0.38 AC
 MCL-832.5

LOT 12
 16952 SF
 0.38 AC
 MCL-832.5

LOT 12
 16952 SF
 0.38 AC
 MCL-832.5

LOT 12
 16952 SF
 0.38 AC
 MCL-832.5

LOT 12
 16952 SF
 0.38 AC
 MCL-832.5

LOT 12
 16952 SF
 0.38 AC
 MCL-832.5

LOT 12
 16952 SF
 0.38 AC
 MCL-832.5

LOT 12
 16952 SF
 0.38 AC
 MCL-832.5

LOT 12
 16952 SF
 0.38 AC
 MCL-832.5

LOT 12
 16952 SF
 0.38 AC
 MCL-832.5

LOT 12
 16952 SF
 0.38 AC
 MCL-832.5

LOT 12
 16952 SF
 0.38 AC
 MCL-832.5

LOT 12
 16952 SF
 0.38 AC
 MCL-832.5

LOT 12
 16952 SF
 0.38 AC
 MCL-832.5

LOT 12
 16952 SF
 0.38 AC
 MCL-832.5

LOT 12
 16952 SF
 0.38 AC
 MCL-832.5

LOT 12
 16952 SF
 0.38 AC
 MCL-832.5

LOT 12
 16952 SF
 0.38 AC
 MCL-832.5

LOT 12
 16952 SF
 0.38 AC
 MCL-832.5

LOT 12
 16952 SF
 0.38 AC
 MCL-832.5

LOT 12
 16952 SF
 0.38 AC
 MCL-832.5

LOT 12
 16952 SF
 0.38 AC
 MCL-832.5

LOT 12
 16952 SF
 0.38 AC
 MCL-832.5

LOT 12
 16952 SF
 0.38 AC
 MCL-832.5

LOT 12
 16952 SF
 0.38 AC
 MCL-832.5

LOT 12
 16952 SF
 0.38 AC
 MCL-832.5

LOT 12
 16952 SF
 0.38 AC
 MCL-832.5

LOT 12
 16952 SF
 0.38 AC
 MCL-832.5

LOT 12
 16952 SF
 0.38 AC
 MCL-832.5

LOT 12
 16952 SF
 0.38 AC
 MCL-832.5

LOT 12
 16952 SF
 0.38 AC
 MCL-832.5

LOT 12
 16952 SF
 0.38 AC
 MCL-832.5

LOT 12
 16952 SF
 0.38 AC
 MCL-832.5

LOT 12
 16952 SF
 0.38 AC
 MCL-832.5

LOT 12
 16952 SF
 0.38 AC
 MCL-832.5

LOT 12
 16952 SF
 0.38 AC
 MCL-832.5

LOT 12
 16952 SF
 0.38 AC
 MCL-832.5

LOT 12
 16952 SF
 0.38 AC
 MCL-832.5

LOT 12
 16952 SF
 0.38 AC
 MCL-832.5

LOT 12
 16952 SF
 0.38 AC
 MCL-832.5

LOT 12
 16952 SF
 0.38 AC
 MCL-832.5

LOT 12
 16952 SF
 0.38 AC
 MCL-832.5

LOT 12
 16952 SF
 0.38 AC
 MCL-832.5

LOT 12
 16952 SF
 0.38 AC
 MCL-832.5

LOT 12
 16952 SF
 0.38 AC
 MCL-832.5

LOT 12
 16952 SF
 0.38 AC
 MCL-832.5

LOT 12
 16952 SF
 0.38 AC
 MCL-832.5

LOT 12
 16952 SF
 0.38 AC
 MCL-832.5

LOT 12
 16952 SF
 0.38 AC
 MCL-832.5

LOT 12
 16952 SF
 0.38 AC
 MCL-832.5

LOT 12
 16952 SF
 0.38 AC
 MCL-832.5

LOT 12
 16952 SF
 0.38 AC
 MCL-832.5

LOT 12
 16952 SF
 0.38 AC
 MCL-832.5

LOT 12
 16952 SF
 0.38 AC
 MCL-832.5

LOT 12
 16952 SF
 0.38 AC
 MCL-832.5

LOT 12
 16952 SF
 0.38 AC
 MCL-832.5

LOT 12
 16952 SF
 0.38 AC
 MCL-832.5

LOT 12
 16952 SF
 0.38 AC
 MCL-832.5

LOT 12
 16952 SF
 0.38 AC
 MCL-832.5

LOT 12
 16952 SF
 0.38 AC
 MCL-832.5

LOT 12
 16952 SF
 0.38 AC
 MCL-832.5

LOT 12
 16952 SF
 0.38 AC
 MCL-832.5

LOT 12
 16952 SF
 0.38 AC
 MCL-832.5

LOT 12
 16952 SF
 0.38 AC
 MCL-832.5

LOT 12
 16952 SF
 0.38 AC
 MCL-832.5

LOT 12
 16952 SF
 0.38 AC
 MCL-832.5

LOT 12
 16952 SF
 0.38 AC
 MCL-832.5

LOT 12
 16952 SF
 0.38 AC
 MCL-832.5

LOT 12
 16952 SF
 0.38 AC
 MCL-832.5

LOT 12
 16952 SF
 0.38 AC
 MCL-832.5

LOT 12
 16952 SF
 0.38 AC
 MCL-832.5

LOT 12
 16952 SF
 0.38 AC
 MCL-832.5

LOT 12
 16952 SF
 0.38 AC
 MCL-832.5

LOT 12
 16952 SF
 0.38 AC
 MCL-832.5

LOT 12
 16952 SF
 0.38 AC
 MCL-832.5

LOT 12
 16952 SF
 0.38 AC
 MCL-832.5

LOT 12
 16952 SF
 0.38 AC
 MCL-832.5

LOT 12
 16952 SF
 0.38 AC
 MCL-832.5

LOT 12
 16952 SF
 0.38 AC
 MCL-832.5

LOT 12
 16952 SF
 0.38 AC
 MCL-832.5

LOT 12
 16952 SF
 0.38 AC
 MCL-832.5

LOT 12
 16952 SF
 0.38 AC
 MCL-832.5

LOT 12
 16952 SF
 0.38 AC
 MCL-832.5

LOT 12
 16952 SF
 0.38 AC
 MCL-832.5

LOT 12
 16952 SF
 0.38 AC
 MCL-832.5

LOT 12
 16952 SF
 0.38 AC
 MCL-832.5

LOT 12
 16952 SF
 0.38 AC
 MCL-832.5

LOT 12
 16952 SF
 0.38 AC
 MCL-832.5

LOT 12
 16952 SF
 0.38 AC
 MCL-832.5

LOT 12
 16952 SF
 0.38 AC
 MCL-832.5

LOT 12
 16952 SF
 0.38 AC
 MCL-832.5

LOT 12
 16952 SF
 0.38 AC
 MCL-832.5

LOT 12
 16952 SF
 0.38 AC
 MCL-832.5

LOT 12
 16952 SF
 0.38 AC
 MCL-832.5

LOT 12
 16952 SF
 0.38 AC
 MCL-832.5

LOT 12
 16952 SF
 0.38 AC
 MCL-832.5

LOT 12
 16952 SF
 0.38 AC
 MCL-832.5

LOT 12
 16952 SF
 0.38 AC
 MCL-832.5

LOT 12
 16952 SF
 0.38 AC
 MCL-832.5

LOT 12
 16952 SF
 0.38 AC
 MCL-832.5

LOT 12
 16952 SF
 0.38 AC
 MCL-832.5

LOT 12
 16952 SF
 0.38 AC
 MCL-832.5

LOT 12
 16952 SF
 0.38 AC
 MCL-832.5

LOT 12
 16952 SF
 0.38 AC
 MCL-832.5

LOT 12
 16952 SF
 0.38 AC
 MCL-832.5

LOT 12
 16952 SF
 0.38 AC
 MCL-832.5

LOT 12
 16952 SF
 0.38 AC
 MCL-832.5

LOT 12
 16952 SF
 0.38 AC
 MCL-832.5

LOT 12
 16952 SF
 0.38 AC
 MCL-832.5

LOT 12
 16952 SF
 0.38 AC
 MCL-832.5

LOT 12
 16952 SF
 0.38 AC
 MCL-832.5

LOT 12
 16952 SF
 0.38 AC
 MCL-832.5

LOT 12
 16952 SF
 0.38 AC
 MCL-832.5

LOT 12
 16952 SF
 0.38 AC
 MCL-832.5

LOT 12
 16952 SF
 0.38 AC
 MCL-832.5

LOT 12
 16952 SF
 0.38 AC
 MCL-832.5

LOT 12
 16952 SF
 0.38 AC
 MCL-832.5

LOT 12
 16952 SF
 0.38 AC
 MCL-832.5

LOT 12
 16952 SF
 0.38 AC
 MCL-832.5

LOT 12
 16952 SF
 0.38 AC
 MCL-832.5

LOT 12
 16952 SF
 0.38 AC
 MCL-832.5