

★ Roll Call Number

Agenda Item Number

44

Date December 17, 2012

Submission of the 2011-2012 Annual Report of the Greater Des Moines Public Art Foundation as required by agreement.

Moved by _____ to receive and file.

COUNCIL ACTION	YEAS	NAYS	PASS	ABSENT
COWNIE				
COLEMAN				
GRIESS				
HENSLEY				
MAHAFFEY				
MEYER				
MOORE				
TOTAL				

MOTION CARRIED

APPROVED

Mayor

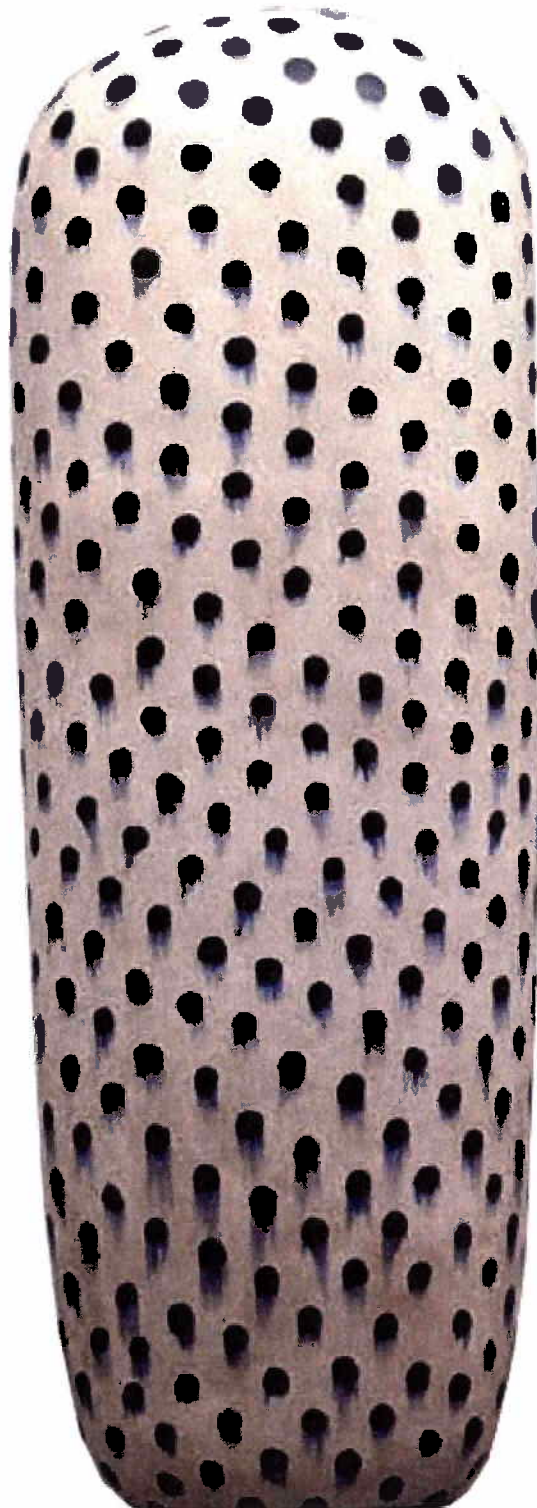
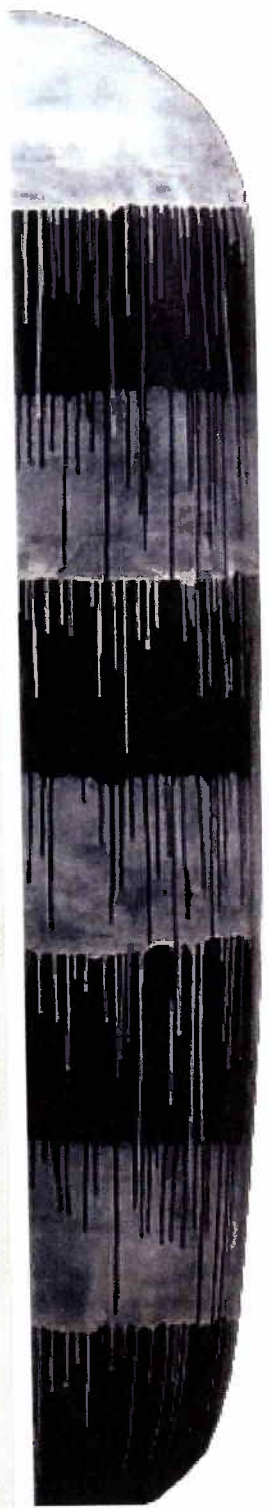
CERTIFICATE

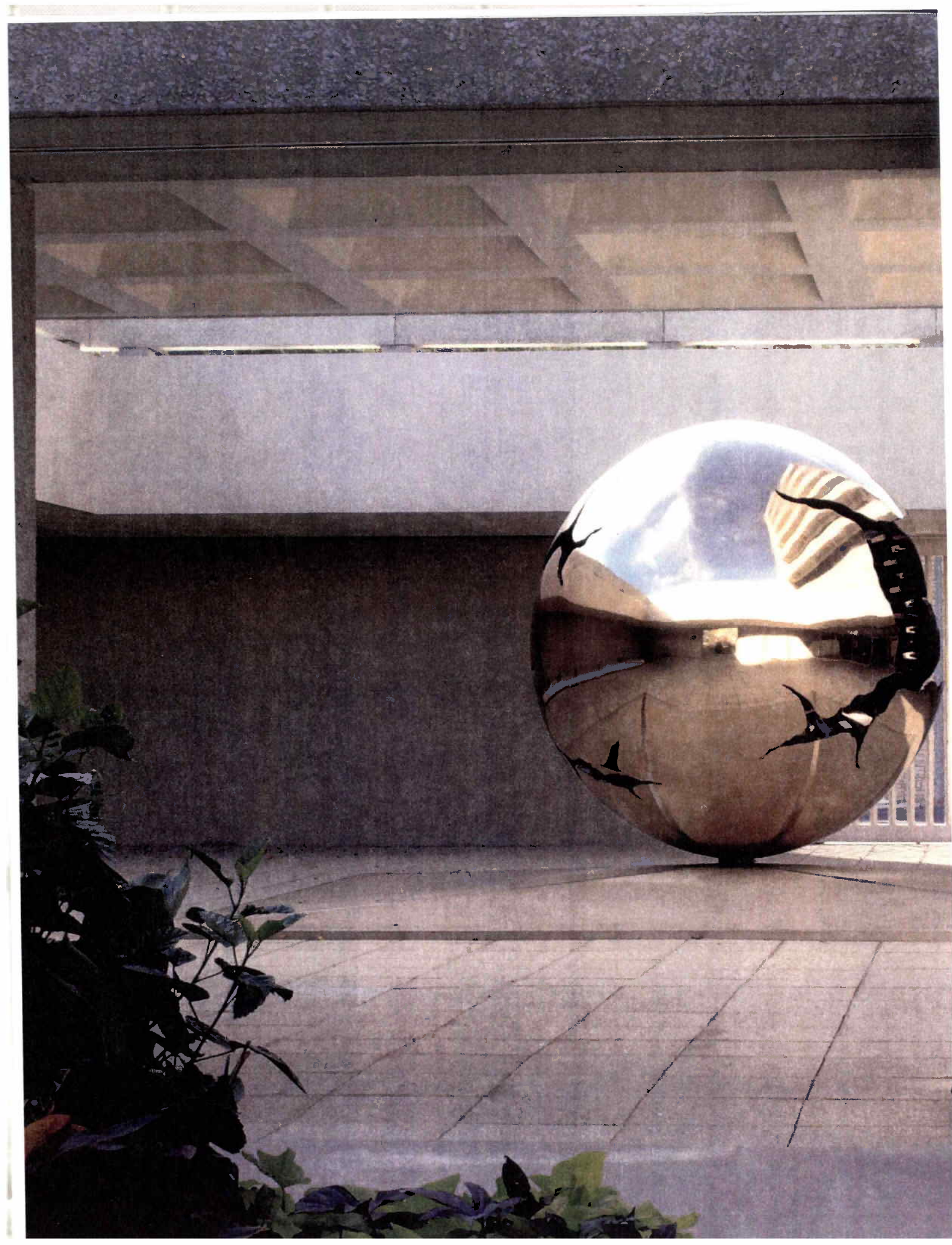
I, DIANE RAUH, City Clerk of said City hereby certify that at a meeting of the City Council of said City of Des Moines, held on the above date, among other proceedings the above was adopted.

IN WITNESS WHEREOF, I have hereunto set my hand and affixed my seal the day and year first above written.

City Clerk

2011-2012 ANNUAL REPORT







MISSION

The Greater Des Moines Public Art Foundation places art in public spaces through public and private collaborations.

VISION

The Greater Des Moines Public Art Foundation engages, inspires, and enriches the lives of citizens and visitors in our community. The Public Art Foundation is recognized for increasing cultural awareness by establishing a world-class destination for public art.

The Public Art Foundation is the “go to” resource, the lead organization and advocate for “advancing public art” in Greater Des Moines. The Public Art Foundation recognizes that art belongs in streetscapes, parks, buildings and infrastructures of a thriving community, not just in galleries and museums. Thus, it actively seeks opportunities for art integration throughout the community with the goal of establishing a world-class destination for public art.

Through a multidisciplinary and diverse approach, the organization:

- Identifies, selects, and commissions works of art created by venerated professional artists for installation in public spaces;
- Acquires artworks for a public art collection by means of direct commissions, invitationals, community initiated projects, and gifts;
- Enhances the physical environment, public buildings, and lands;
- Provides financial support and assistance in commissioning professional artists for qualified urban development projects that are initiated by either the municipality or the private sector;
- Integrates the work and thinking of professional artists into the planning, design, and construction of city and privately developed facilities, e.g., buildings, parks, streetscapes, and any other facilities and spaces that would benefit from participation by an artist;
- Celebrates the multi-cultural and diverse character of the community’s residential and commercial neighborhoods and citizens;
- Nurtures a sense of citizen ownership and pride in a public art collection;
- Encourages creative partnerships between artists and residents, neighborhoods, businesses, and community organizations located in the city; and
- Complements and enhances urban planning and development projects.

FROM THE DIRECTOR

“Make no little plans; they have no magic to stir men’s blood and probably themselves will not be realized. Make big plans; aim high in hope and work, remembering that a noble, logical diagram once recorded will never die, but long after we are gone will be a living thing, asserting itself with ever-growing insistency. Remember that our sons and grandsons are going to do things that would stagger us. Let your watchword be order and your beacon beauty. Think big.”

DANIEL HUDSON BURNHAM (AMERICAN, 1846-1912)

A preeminent architect and one of America’s earliest modern city planners, Daniel Burham’s greatest influence was everything he imagined. He offered a powerful vision that inspired the “City Beautiful Movement” across the United States, including the city of Des Moines. The heart of the movement’s philosophy, developed in response to decaying large towns, was promoting beauty to create a vibrant urban community.

What will our city’s core be like 10, 25, or 50 years from now? Will it be prosperous, earning nods for its man-made design and natural beauty, or be an eyesore, chaotic and declining?

The Greater Des Moines Public Art Foundation believes that public art builds stronger communities. Its role in the civic life of our community has been part of the organization’s mission since its founding in 2004 as a non-profit organization.

By bringing together a broad range of stakeholders, including artists, design professionals, neighborhoods, businesses and organizations, and public agencies to find innovative opportunities for change, the Public Art Foundation works to forge more beautiful, sustainable, and functional public spaces for the future.

To create a world-class destination for public art, the Public Art Foundation understands that the cultural and democratic life of our community depends on viable public space. It selects projects and works with celebrated artists and artist teams to bring innovation to urban space challenges. It believes that design excellence is the minimum requirement for all public space and that environmental sustainability helps guide design.

Public/private partnerships are one of the best ways to achieve what is truly spectacular and unique in the urban world. By collaborating we generate powerful and unexpected working relationships, and create remarkable solutions to complicated public space issues.

In April 2011, the Public Art Foundation Board of Directors outlined goals from its strategic plan for fiscal year 2011-12. Three top priorities were identified: (1) Launch the new Website; (2) Develop a neighborhood project through a commission process including a panel selection, request for qualification and call to artists, selection process, and concept development; and (3) Develop additional funding sources and structure.

Online, the Public Art Foundation embraced the Web culture and social media in September 2011 by the launching of its website. One measure of engagement we’re particularly proud of in this realm is the free, interactive, multimedia App called DSM PUBLIC ART that was released in January 2012. Our web and virtual communities have expanded through social media, with the Public Art Foundation Twitter followers and Facebook fans.

The public art process plays a determining role in the quality of public space. In October 2011, a Policy and Procedures Manual was formally adopted and published by the Public Art Foundation to provide guidance. The completion of this document represented a key accomplishment in



The Policy and Procedures Manual, adopted in October 2011, is available online at <http://dsmpublicartfoundation.org/about/publications/>



The Des Moines public art project, Temple Chess & Poetry Garden (2006), by Siah Armajani, is a popular pocket park in the center of downtown. It became the venue for the awards event held on a sunny June 20, 2012. For this program, the Public Art Foundation began collaborating with the City of Des Moines in April 2012. From 104 entries, the process succeeded in selecting 11 works of art by qualified artists for publication into the City's new Performance Report. See story on page 13.

the strategic plan for developing organizational structure. It furnished public information on governance, and guidance on operations, artist recruitment and commission process, legal considerations, as well as care and maintenance,

The achievements of the Public Art Program extended from dedicated volunteers working on temporary art projects in Metro Des Moines' Arts & Entertainment Districts — to initiating a neighborhood's ambition to transform the 6th Avenue Bridge, the northern gateway to the City's central business district, into an icon.

In May 2012, the desire to create an uplifting destination led to major financial support from the Hubbell Charitable Foundation. A project by acclaimed artist Jun Kaneko along the Downtown Des Moines Principal Riverwalk was accomplished with these funds, resulting in perhaps the most breathtaking public gathering place in the city. "The generous contribution from the Jim and Helen Hubbell Charitable Foundation reflects the importance of public art in our community," said Paul Mankins, Public Art Foundation Board President. "The gift allows us to place Kaneko's Dango sculptures as well as move us closer to our goal of becoming a world-class destination for public art."

Looking back at the fiscal year ending June 30, 2012, we are pleased to acknowledge a number of new collaborations and to share the successes of community engagement initiatives, which have all been made possible through the dedication of passionate and talented volunteers, and the generosity of contributors.

Fiscal year 2011-12 at the Greater Des Moines Public Art Foundation has been an opportunity to achieve. Daniel Burnham's words are meaningful, and we took a cue from his remark "Make big plans; aim high." I extend my deep appreciation to the Board of Directors and those in our community who dreamed and worked hard so that public art may profoundly amaze us all.

M. JESSICA ROWE | DIRECTOR



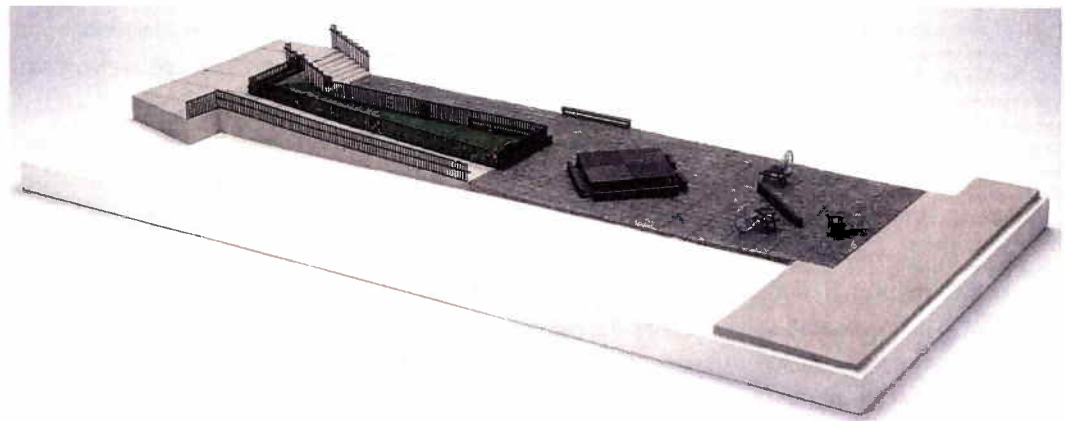
The public art project by Armajani includes three chess tables; a rectangular garden surrounded by an iron fencing embedded with brass-lettered lines of poetry by Barret Watton; benches; and a large square table having multiple uses. This public art project unites structure with site and use, and its design encourages both contemplation and communal activity.

PHOTO COURTESY OF SUBSTANCE ARCHITECTURE INTERIORS DESIGN

WELL-TIMED CARE AND MAINTENANCE

Many great public art projects, like *Temple Chess & Poetry Garden* designed in 2006 by Siah Armajani, need conservation and restoration after they are “completed.” Once a public work of art is installed, its life is just beginning. Care and maintenance for *Temple Chess & Poetry Garden* became a priority throughout the beginning of the fiscal year. Functional elements of the design made from ipe wood benefited from cleaning. Bronze surfaces were treated and other metal surfaces were prepared and repainted. The chess boards and composition details of the handrails were restored using the original patterns, plus minor structural repairs were completed.

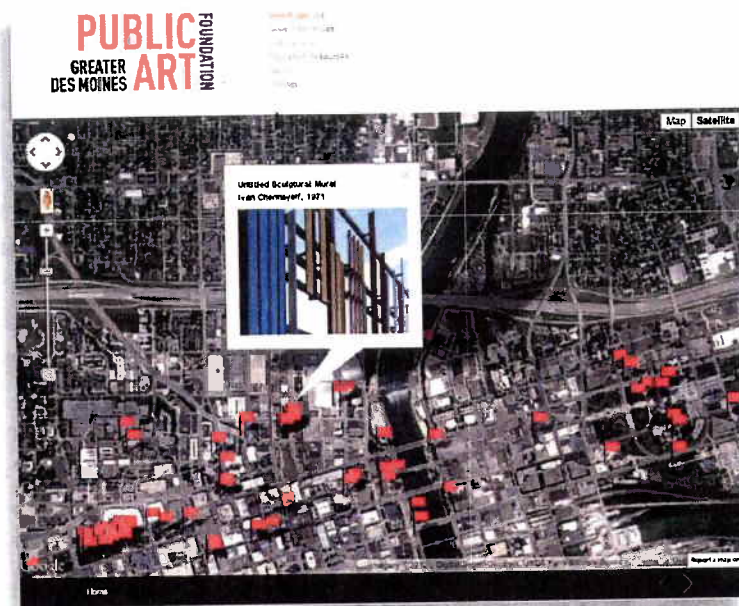
Julie Hempel, City of Des Moines Parks maintenance manager, Andy Foster, forestry crew chief for Public Works, and Ken Trytek, parks staff, facilitated landscape improvements integrated into the site. The canopies of the surrounding trees were raised to provide dappled shade for visitors. In the central planting bed, hosta plants were removed and boxwoods planted — part of the original design; these evergreens will be cultivated to densely blanket the ground.



A NEW AND DYNAMIC WEBSITE WAS LAUNCHED IN SEPTEMBER 2011 dsmpublicartfoundation.org

Through its new website, the Public Art Foundation introduces public art in Greater Des Moines to a global audience; gives a voice to intellectually engaging artists; builds communities who respond and reflect on a wide range of public art; and furthers its mission by expanding the institution’s reach beyond its geography. “Advancing the best of public art” was the mantra used throughout the website development. Stories of public art are vital resources for educators and students as well as a much broader audience of professional, community and civic organizations. Michael Morain, arts reporter for *The Des Moines Register* wrote, “The map is awesome.”

The page “View Public Art” (shown left) was designed as an interactive tool that filters more than 100 public artworks by location with satellite-based [GPS] navigation, type (sculpture, mural, etc.) and materials (bronze, glass, light, granite, etc.)



The new website offers visitors ways to explore more than 100 works of art throughout Greater Des Moines.

The "News + Initiatives" provides world and local events, news, features, and events which are posted to the blogging community on a regular basis.

The "About" section contains information from mission and vision, history, board of directors to PDFs of publications such as annual reports and policy manual.

The page "Education Resources" was developed for educators preK through 12, with lesson plans to allow for integration of the arts in a variety of subjects, including STEM (Science, Technology, Engineering, and Mathematics), literacy, and social studies.

Design Consultant Connie Wilson, 8|7 Central design and technology staff, and Education Consultant Renee Shull-Harmon worked together as a team with the Public Art Foundation to produce and launch the website.

The Public Art Foundation icon for its new iPhone App.



The free app lets users search a visual library organized by artist, title and location. Chosen works are found by following the Google maps and GPS tracking. The points on the Google map correspond to public artworks both within and outside the City of Des Moines.

FOUNDATION RELEASED DSM PUBLIC ART APP IN JANUARY 2012

The Public Art Foundation was struck by how little people knew about the public art around them which they pass by everyday, and wanted to do something about it. The DSM PUBLIC ART App focused on the diverse collection of public art on view in Des Moines, and the story each artwork tells. The project sought to change the way we understand and explore our city. With the help of a free mobile application, finding and learning more about public art has never been easier.

This interactive, multimedia app was released in January 2012 after being in development since March 2011. DSM PUBLIC ART App was the brainchild of Public Art Foundation and funded by an anonymous donor. Matt Blair of Elsewise LLC designed the software.

DSM magazine featured "The App and The Art" in its May, June, July 2012 issue. Using the handy iPhone app, their writer planned three local public art crawls and shared her discoveries in a five-page story. By increasing awareness of public art, the Public Art Foundation hopes that DSM PUBLIC ART App will develop more appreciation for the public art Des Moines has — and an appetite to create more.

PLACE-BASED PLANNING CREATES STREETScape MODEL

The 6th Avenue Streetscape Project provided an opportunity for the Public Art Foundation to partner with the 6th Avenue Corridor, Inc. (6AC). The collaboration helped to develop a model of creative place-based planning and urban design which integrates art, culture and infrastructure.

In December 2011, Alecia Kates, executive director of 6AC, presented to the Public Art Foundation, the final report on the art and design solutions for the streetscape redevelopment. Earlier in the 2011 calendar year, the Public Art Foundation identified that the 6AC streetscape improvements had the potential of benefiting from an artist's involvement. As a result, the sum of \$20,000 was provided to support the artist Chaden Halfhill's early integration into the planning process. Team leaders included Kates, Halfhill, Intern Shari Miller, Recruiter Allison Meir, Board member and Latino translator Alejandro Orozco, and Vietnamese translator and recruiter Linh Huynh. The focus group discussions helped to gather information. Each group focused on the community's history and heritage and connected art with positive memories and urban spaces. All focus group members were neighborhood residents over 18 years of age, who represented ethnic groups in the area. Organizations represented included Las Americas, Vietnamese Association, Iowa Asia Alliance, and African Churches.

Preliminary designs were completed by Genus Landscape Architect in Des Moines in 2012, and the final design concepts include a variety of art elements.

IT'S A WRAP

In May 2012, the Ingersoll Park Neighborhood embarked upon a public art project. Mark Kane, former Garden Editor of *Better Homes and Gardens* and Ingersoll neighbor, explained, "Here's the story. A group of neighbors came together and converted the traffic circle at 44th and Harwood into a garden. Today it looks great and serves to inspire other neighborhood associations." In late summer 2011, Kane proposed that his neighborhood "add art to the garden and went to the Greater Des Moines Public Art Foundation to propose the idea."

Once the Public Art Foundation approved the design project, it then advanced the process by securing permission from Des Moines Water Works to wrap the design around its telemetry box located on the traffic circle. Neighborhood funds were leveraged, graphic design services donated, and Beeline+Blue, the company which printed and installed the dramatic images, made a contribution. The neighborhood and Water Works were impressed. "Today, the utility box signals to drivers, joggers, walkers, everyone who passes, that the circle is a special place, slow down, take a look," boasts Kane.

The Ingersoll Neighborhood utility box is the second box to be wrapped in Des Moines, the prototype was completed in March 2011 at Polk Boulevard and University Avenue.

Attached to a pole and hovering over the garden circle was a grey utility box which became a 'blank canvas' for this project. Kane's composition of large-scale colorful photographs magnified contrasting plant details. Individual photographs (i.e., hot-magenta peony flowers, azure blue-leaved hostas, and emerald-green ferns) covered each side of the utility box.



Photo: Mark Kane

Before and After

A MONUMENTAL JOURNEY: UPDATE

In July 2011, the Public Art Foundation's consideration of ownership of "A Monumental Journey" provided an opportunity to review the public art project's history, scale and scope.

The Iowa National Bar Association (INBA) approached the Public Art Foundation approximately four years ago with a proposal to memorialize the 1925 founding of the National Bar Association in Des Moines. The Public Art Foundation advocated for a high quality project and assisted with the selection of the internationally renowned artist Kerry James Marshall. It funded an artist's maquette, solicited donations for the commission on behalf of INBA, and pledged \$100,000 for ongoing maintenance of the artwork.

To advance the project, the INBA reduced the \$1,741,500 budget by \$679,250 to \$1,062,250. The fabrication of the sculpture, a fiberglass-composite with steel support (37 feet high by 20 feet in diameter), was estimated at \$558,000. A fund balance of \$410,898 was reported in September 2011; funds raised and pledged totaled \$671,898. Donations included: Prairie Meadows Legacy Grant of \$50,000; Dahl Trust of \$10,000; Principal Financial Group of \$25,000; National Bar Association of \$25,000; Community Foundation Leadership Grant of \$25,000; and MidAmerican Energy of \$25,000. An estimated \$390,352 would complete the project.

The project site was developed for the grassy area along the Principal Riverwalk at East 1st Street, between Walnut Street and Court Avenue. The concept was to integrate the project into the new construction of the Riverwalk flood levee. Bids of more than \$1.6 million for the proposed levee work with the Army Corps of Engineers was unexpected and doubled the \$800,000 budget. Securing additional federal support in the near future was not anticipated. The delay of the levee work caused a set back for the project.

At the close of June 2012, the Public Art Foundation recommended the project should move forward with the funds raised and pledged to date, and it proposed to work with the INBA and the Project Steering Committee to secure a new site, develop a contract with the artist, manage construction and installation, and collaborate on the groundbreaking ceremony.

The original computer generated view looking east from the west bank of the Des Moines River. Site rendering courtesy of substance Architecture Interiors Design.



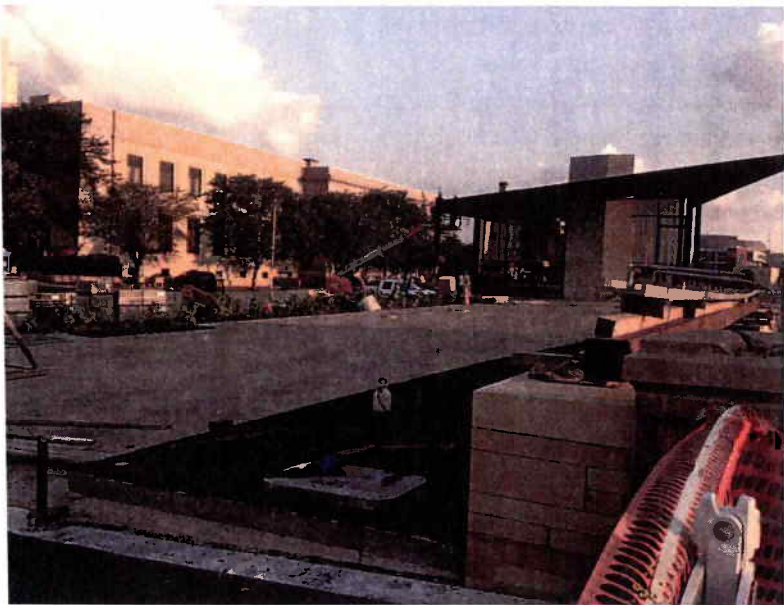
\$200,000 GIFT FROM HUBBELL FOUNDATION FUNDS KANEKO'S SCULPTURES

"We are pleased to support the Greater Des Moines Public Art Foundation with this gift," said Helen Hubbell. "The unique Dango sculptures will add significantly to the experience of the Hub Spot, as well as to the Riverwalk and entire Des Moines area."

In May 2012, the Jim and Helen Hubbell Charitable Foundation's gift was announced. The Hubbell Foundation contributed \$200,000 to support the Public Art Foundation's public art project outside on the plaza of the Hub Spot, a new pavilion developed along the Downtown Des Moines Principal Riverwalk.

The funds were granted specifically for artist Jun Kaneko's trademark "dango" sculptures — the Japanese term for "dumpling." Kaneko used mattress-sized slabs of clay to hand-build the dangos in his studio in Omaha, Nebraska. Inspired by nature, these artworks are ceramic ovular sculptures resembling vases without openings. More than seven feet in height, the dangos are painted in his signature layered, painterly patterns. Jun Kaneko's sculptures will be installed in Des Moines in the Fall of 2012. Kaneko received a Lifetime Achievement Award in 1994 from the National Council on Education in the Ceramic Arts.

OPPOSITE
Artist Jun Kaneko works on dango sculptures in his studio.



ABOVE The site under construction during an early morning in June 2012

PHOTO M. Jessica Rowe

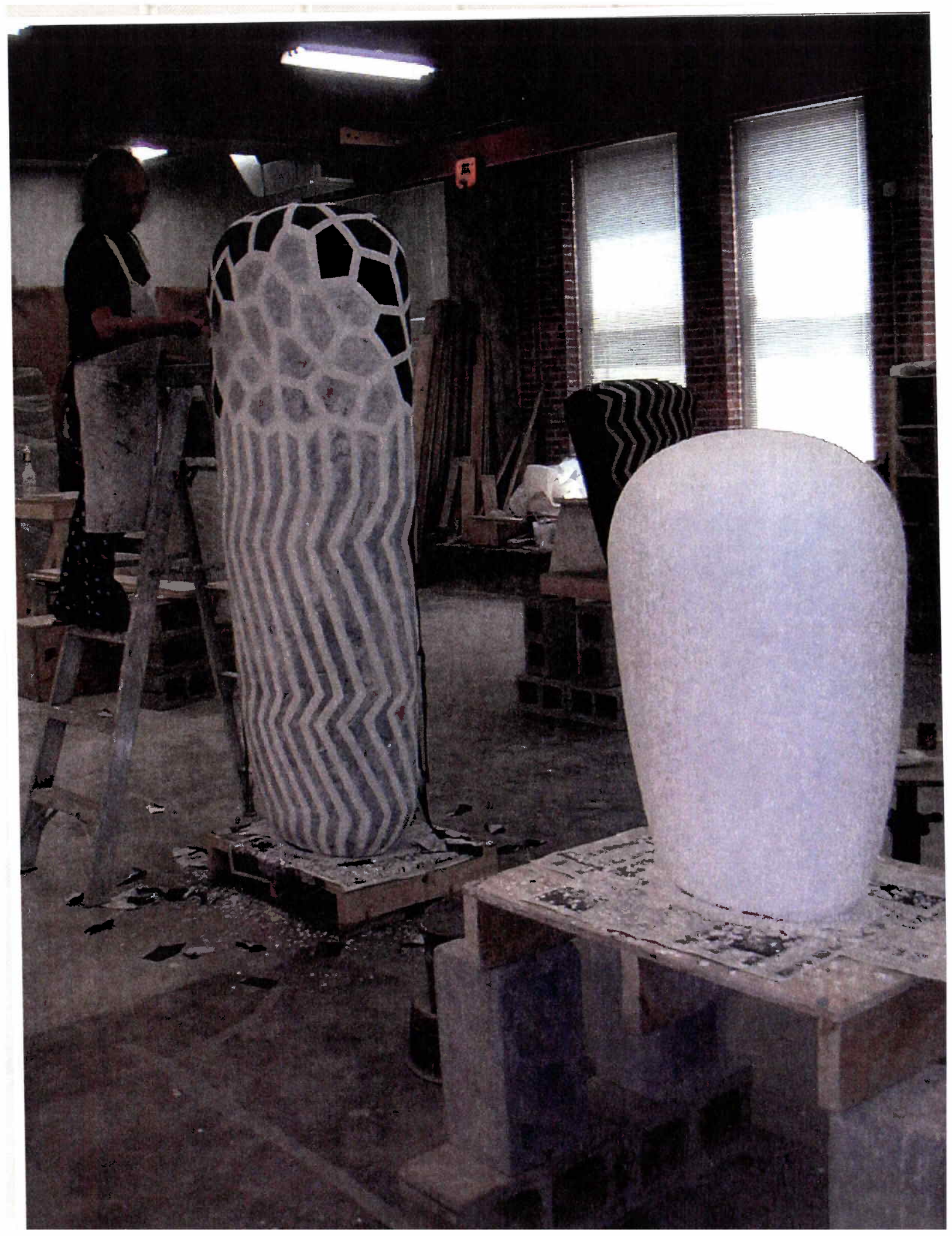
RIGHT A rendering by peripheral matter productions (PMP) depicts the future public art project which integrates five sculptures by Jun Kaneko into the new pavillion plaza. Located at the northeast corner of Court Avenue and Water Street, this part of the project is scheduled for completion in the fall of 2012.



In a 2011 article by Sara Jacobson, Kaneko commented that whether he makes a large or small dango, "in the end I hope it will give off enough visual energy to shake the air around it."

All of Kaneko's works reference a Shinto principle from his Japanese heritage. Art critic Arthur Danto said: "There is a principle that can be said to govern all the artistic decisions [of] Kaneko's works...the Japanese name for the principle is ma, meaning spirit."

This Japanese spatial concept is experienced progressively through intervals of space — it is best described as a consciousness of place. "Ma" is the thing that takes place in the imagination of the public who experience the five dango sculptures. (see cover)



PROJECT SPACES

A new community-based public art program called "Project Spaces" was initiated in 2011 by Artstop and supported by the Public Art Foundation. From September 23 through October 9, 2011, participating artists transformed seven public spaces in the Des Moines metro's Cultural and Entertainment Districts, plus Ingersoll Avenue, into "Projects Spaces" for adventurous artistic works.

ARTISTS AND LOCATIONS

Judy Bales, Des Moines Public Library, Western Gateway District
Matthew Clark, Studio 3, Ingersoll District
Kim Hutchinson, Capitol Square, Court Avenue District
Matthew Kluber, Gateway Lofts, Western Gateway District
Keith Lemley, Capitol Square, Court Avenue District
Lee Emma Running, Historic City Hall, Historic Valley Junction District
Joan Webster-Vore, Roosevelt Shopping Center, Roosevelt Cultural District
Susan Chrysler White, State Historical Building, Historic East Village District

"Project Spaces" was organized in conjunction with Artstop's sixth annual event that featured and celebrated local arts, artists and cultural organizations in the Greater Des Moines area.

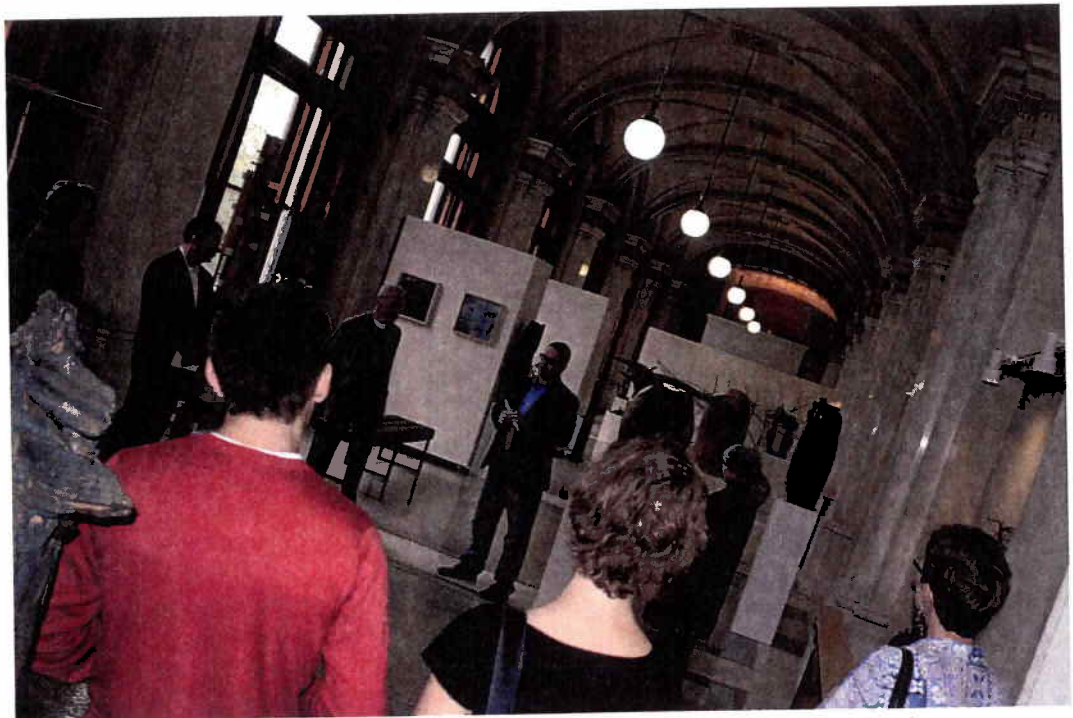


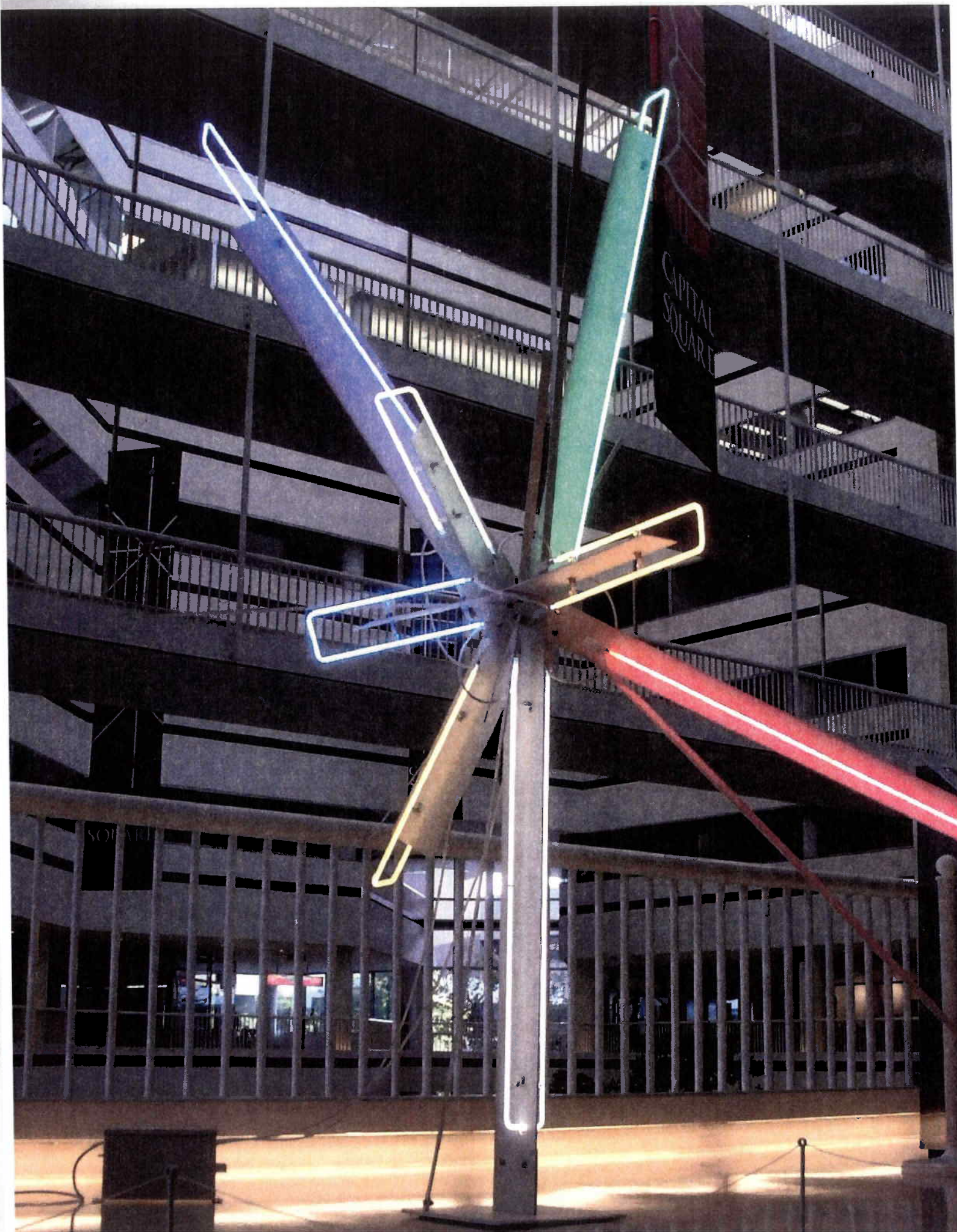
Matthew J. Clark's installation, *Our Little Jimmy Can Do Anything If He Puts His Mind To It*, in front of the ADIO building on Ingersoll Avenue in Des Moines.

Iowa artist Matthew J. Clark (center) accepts a \$1,000 prize from the GDMPAF at a press event at the Heritage Gallery in downtown Des Moines on October 12, 2011. Clark's winning entry, the sculptural installation titled *Our Little Jimmy Can Do Anything If He Puts His Mind To It* was chosen by public vote.

OPPOSITE

Iowa City artist Keith Lemley's neon and steel sculpture, *Implied Object*, lights up Capitol Square in the Court Avenue District during artstop 2011.





6TH AVENUE BRIDGE

In 2011, the 6th Avenue Bridge was defined as a community symbol by Highland Park and Oak Park neighborhoods and 6th Avenue Corridor (6AC) focus groups. The bridge is contiguous with the north boundary of the 6AC's 1.2 mile zone. Viewpoints from both the civic and private sectors emphasized the bridge as the area's largest asset. The community agreed that aesthetic improvements would enhance pedestrian experience and be a focal point for neighborhood celebrations. In November 2011, a public meeting was held to discuss public art opportunities and the overall importance of the bridge's connection to North Des Moines.

The Public Art Foundation planned and managed a national call for artists. In the meantime, the rehabilitation of 6th Avenue Bridge was set in motion for the Spring of 2012.

In February 2012, qualified artists, artisans, and designers from throughout the United States were invited to develop creative proposals for the integration of artwork into the 6th Avenue Bridge. The selection panel was composed of the representatives from the project design team, community leaders, 6AC, and the Public Art Foundation. In April 2011, the panel evaluated 123 applications from 24 states and subsequently honed the selection to 55 applications. The three finalists chosen were: Alice Aycock, Ed Carpenter, and the team of Rosario Marquardt and Roberto Behar.

In Des Moines, the selection panel conducted individual interviews with finalists. Each artist or artist team had the opportunity to present additional materials to reinforce and illustrate their particular approach to past projects. The panel's recommendation to the Public Art Foundation Board was approved in May 2012. The conceptual proposal of Alice Aycock of New York, NY was selected, and at the close of fiscal year 2011-12, Aycock's idea was well into its design development phase.

ABOUT ALICE AYCOCK

Aycock's public art projects can be found throughout the United States, including the San Francisco Public Library, a large-scale sculptural roof installation for the East River Park Pavilion on 60th Street in NYC, and *Star Sifter* for Terminal 1 at JFK International Airport. In the spring of 2014, a series of sculptures will be installed on the Park Avenue malls in New York City, entitled *Park Avenue Paper Chase*. Additionally, her sculptures are in many museums including the Museum of Modern Art, the Guggenheim Museum of Art, the Metropolitan Museum, and numerous other cultural institutions throughout the United States and Europe.

CONCEPTUAL PROPOSAL

Aycock's proposal is an assemblage of curvilinear aluminum shapes that arc over the roadway and attach to the 6th Avenue Bridge. The sculptural construction is centered on the bridge. The shapes were reminiscent of bridge components and amusement park rides which have a truss system of diagonal bracing.

The arc of the structure was designed to be seen from a distance. It would provide a point of arrival and departure for travelers and operate as a landmark for residents. Crossing the bridge traveling south, it would act as the northern portal or gateway to the City of Des Moines — through historic River Bend and Cheatom Park neighborhoods. In the reverse direction, it would be an entrance to another neighborhood, the City's Birdland Park, and North High School.

The artist described it is a celebratory sculpture that could be lit or be a site of 4th of July fireworks. It would signify the activity and energy that was generated historically and refer to the energy and excitement that still exists.

6th Avenue Bridge
Spring 2012
Before rehabilitation

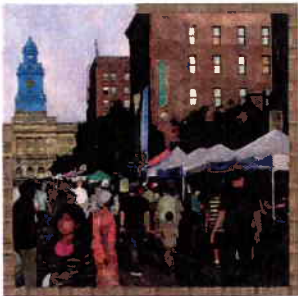


COMPETITION CHALLENGED ARTISTS TO ADDRESS “WHERE WE LIVE”

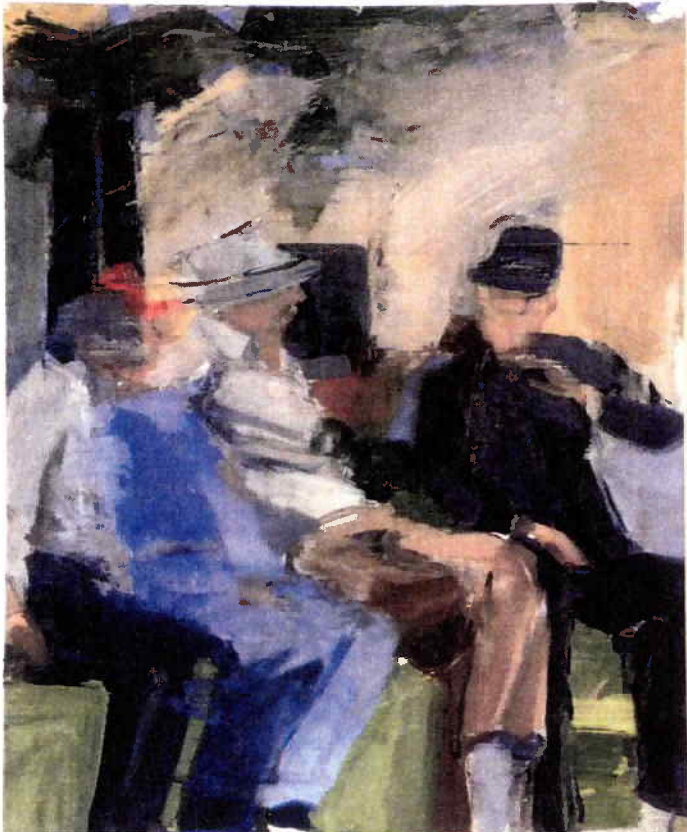
Public Art Foundation partnered with the City of Des Moines in April 2012, to invite qualified artists to submit works of art for publication for the new Performance Report from the City of Des Moines. Winning entries were by artists David Aipperspach, Buffalo Bonker, Roy Cacek, Ruthellen Cunnally, Kristen Greteman, Gene Hamilton, Alan Lampe, Elizabeth Lidgett, Bill Luchsinger and Karen Strohbeen.

A public awards event for the artists was held on June 20, 2012, at the site of the Siah Armajani’s 2006 *Temple Chess & Poetry Garden* in downtown. The Des Moines Tango Trio performed classic Argentine Tango music with pianist Bruce Martin, Norman Sue on bandoneón, and Patrick Riley on cello. Public Art Foundation President Paul Mankins welcomed the public and opened the program. The Honorable Skip Moore, who served as mayor pro tem, and City Manager Richard A. Clark spoke to the audience about quality of life goals and the City services which a recent citizen survey measured. The information was analyzed in the “2011 Performance Report - Where We Live.” City officials distributed certificates of appreciation to the artists whose images illustrated this report. Cash awards were distributed by Public Art Foundation to winning entries.

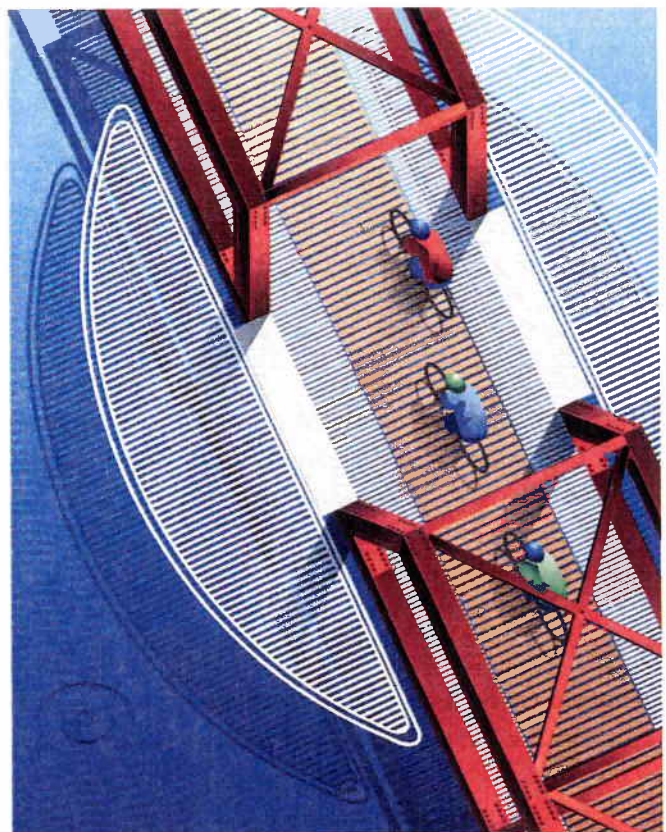
The “2011 Performance Report - Where We Live” was published and available online:
<http://www.dmgov.org/Departments/CityManager/PDF/2011PerformanceReport.pdf>



Karen Strohbeen and Bill Luchsinger
Third & Court
Digital on canvas



David Aipperspach, *Old News*, Oil on canvas



Allen Lampe, *Red Tressel Bridge*, Digital illustration

TRANSLUCENCE GLASS MURAL BY JUN KANEKO ADDS DIMENSION TO COURT AVENUE PUMP STATION

In April 2012, Public Art Foundation commissioned one of three design proposals for a glass mural by Jun Kaneko. To be illuminated from behind with LED lights, the mural will be located on the exterior wall of the triangular pump station and will face north towards the Hub Spot. The compositions grew out of the relationship between the surrounding space and the five dango sculptures to be located just north of Court Avenue at the Hub Spot.

Kaneko began experimental work with glass at Bullseye Glass in Portland, Oregon in 1998 where — after a gestation period — large, incandescent constructions in glass came to life. The shift in material to glass was inspired by Kaneko's ceramic work. What interested Kaneko about glass is its translucent quality, and he sees his work as a collaboration with circumstance and environment. He says, "Always, when I make pieces, it is not just the piece itself but its relationship to the space around it that has my attention. I don't think of my artwork as separate from the environment — it always depends on what it is next to. It's about proportion."

The fabrication of Des Moines' mural is scheduled begin in September 2012 and will be completed in 2013.

OPPOSITE LEFT

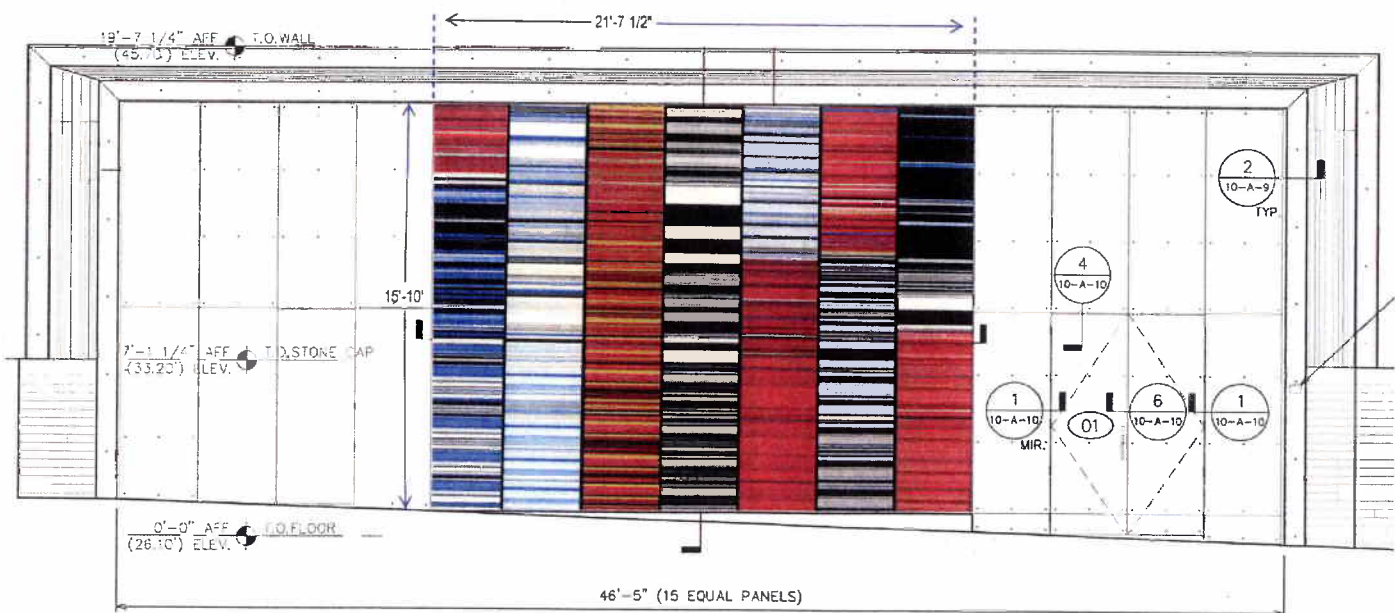
The Court Avenue Pump Station construction site in June 2012.

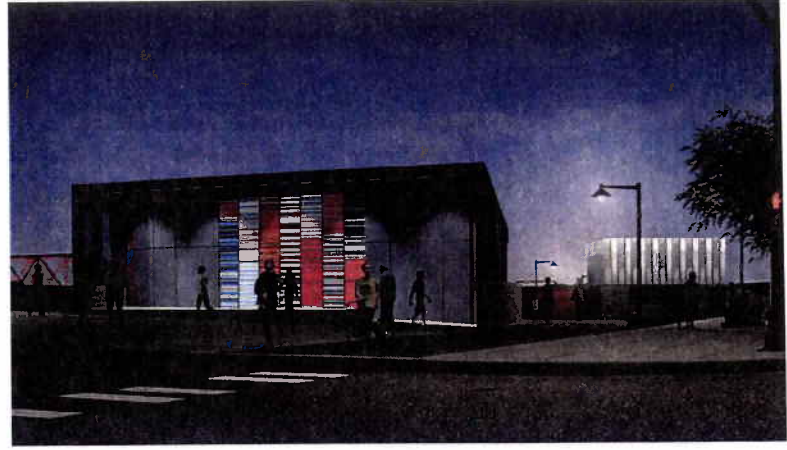
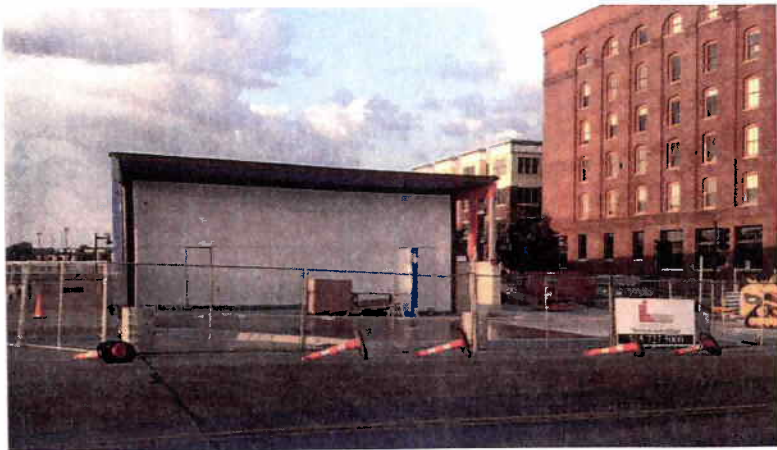
PHOTO M. Jessica Rowe

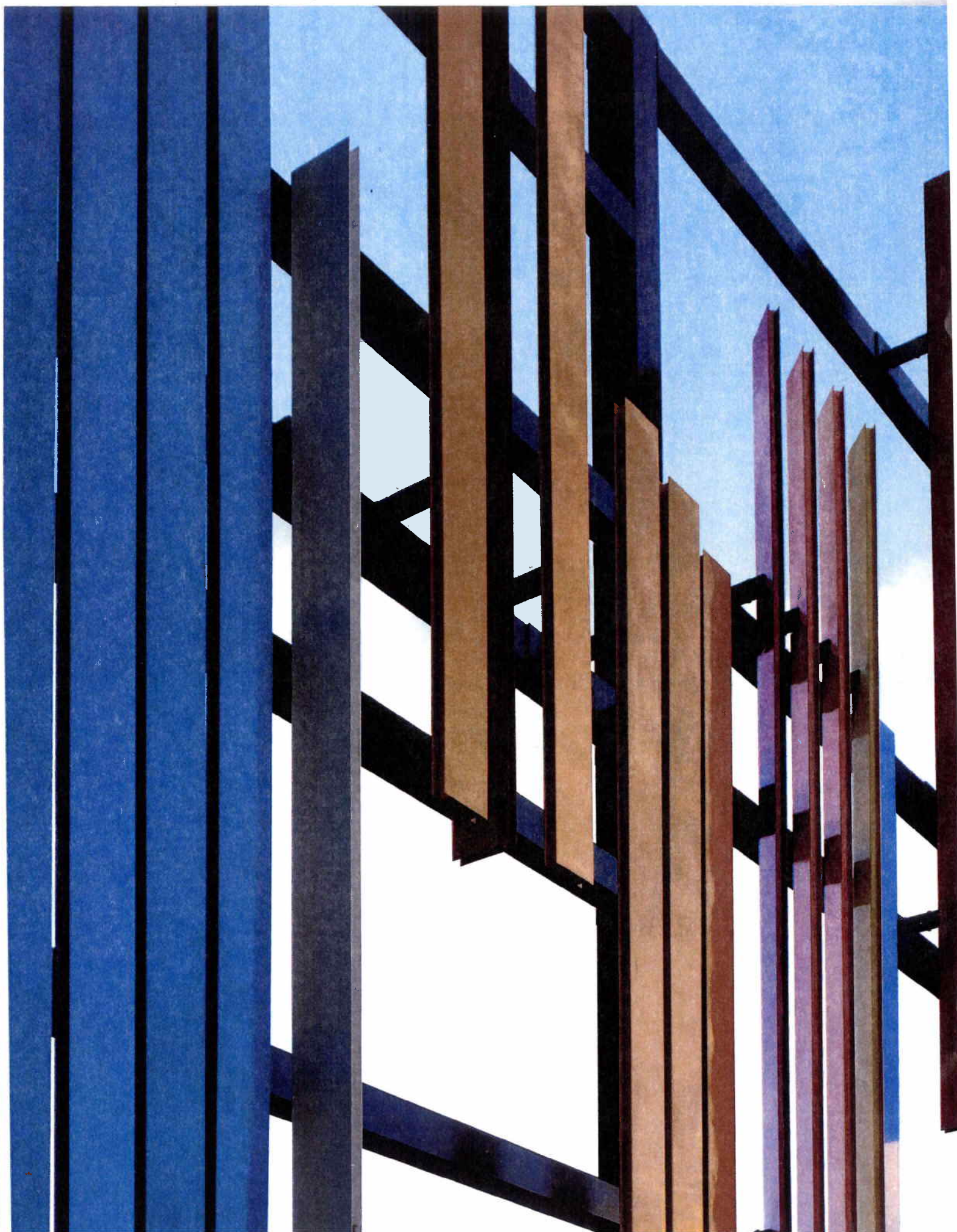
OPPOSITE RIGHT AND LOWER

Rendering by peripheral matter productions (PMP) depicting the future public art project which integrates a fused glass mural by Jun Kaneko into the new Pump Station. Located at the southeast corner of Court Avenue and Water Street, this part of the project is scheduled for completion in the spring of 2013.

The drawing below illustrates Kaneko's mural as a vivid and glowing construction of fused, tempered glass with overall dimensions of more than 15-feet high by 21-feet wide. The composition emphasizes rhythm, balance, and color. A color palette of red, yellow, blue, white and black was selected. A unique pattern of pictorial grids with hard-edge changing colors will be constructed through a system of horizontal stratum or bands under the artist's supervision at Derix Glasstudios in Germany. The selected design consists of seven narrow panels formed by horizontal bands.







This page lists the many extraordinary donors who inspire excellence at the Greater Des Moines Public Art Foundation. Their gifts are celebrated and publicly recognized for their impact now and long into the future.

DONORS

\$200,000

The Jim and Helen Charitable Foundation

\$100,000 – \$199,999

City of Des Moines

\$10,000 – \$99,999

Anonymous Individual

BRAVO

Trudy Holman and G. David Hurd

\$3,000 – \$9,999

Pamela Bass-Bookey and Harry Bookey
substance

\$1,000 – \$2,999

Lois Fingerman

Kristi Lund Lozier

Paul Mankins, FAIA

Katherine M. Murphy

Cynthia O'Brien

Pat Schneider

\$100-\$999

Carrie E. Marshburn-Fleming and

Jeff Fleming

Christine and Steve Hensley

Dr. Paul and Anastasia Polydoran Trust

IN-KIND GIFTS

William Anderson, FAIA

Anonymous Individual

King Au

Beeline+Blue

Dory Briles

Larry Bradshaw

CENTRO

Lea Rosson DeLong, PhD

Essman/Associates

Renee Shull Harmon

Hyatt Place Hotel

Mark Kane

Alecia L. Kates

Barbara M. Mack

Marilyn Popovich

substance

Christopher Tarbox

Connie Wilson Design

PARTNERSHIPS

6th Avenue Corridor, Inc.

Artstop

City of Des Moines

Community Foundation of

Greater Des Moines

Downtown Community Alliance, affiliate of Greater

Des Moines Partnership

Des Moines Water Works

Ingersoll Park Neighborhood Association

Iowa National Bar Association

Polk County

Principal Riverwalk

River Bend and Cheatom Park Neighborhoods

Temple for Performing Arts

PUBLIC ART JURY AND SELECTION

PANEL MEMBERS

Ben M. Cole, P.E.

Phil Delafield

Lois Fingerman

Jeff Fleming

G. David Hurd

Kristi Lund Lozier

Erik Lundy

Paul Mankins

Sandy Morris

Katherine Murphy

Anastasia Polydoran

Carl A. Rogers

Pat Schneider

Curt Sytsma

MaryLee Woods

BOARD OF DIRECTORS

BOARD OF DIRECTORS

Below are the names, addresses, qualifications and terms of office of each person who has served as a member of the Board in FY 2011-12.

King Au | Owner, King Au Studio
943 35th Street, Des Moines, Iowa 50312
Second term expires 12/2012

Born and raised in Hong Kong, King Au obtained a Master's Degree in Architecture and discovered his passion for photography while he was in graduate school. Initially, he practiced architecture and freelanced as an architectural photographer. Later, he ventured into editorial and advertising photography, which is the majority of his work today. For more than 20 years, he has been providing photographic services to national magazines and retailers. His client list includes Better Homes and Gardens, Blue Cross/Blue Shield, Country Home, Disney, Home Depot, Lowe's, Pella Windows, Pottery Barn, Target, Wal-Mart, and Wells Fargo. King Au was the recipient of the Outstanding Young Alumni Award (1996) at Iowa State University. He also served on the Department of Architecture, ISU, Advisory Board (2007-2009). He and his wife Ann Au, a jewelry designer, founded Studio Au Inc. and 2AU Limited.

Pamela Bass-Bookey
Owner, Temple for Performing Arts
1011 Locust Street, Suite 302
Des Moines, Iowa 50309
Third term expires 12/2013

A Chicago native, Pamela Bass-Bookey is interested in the arts and the impact they can have on society. Through her work as a philanthropist, former co-chair of the Des Moines Arts Festival, and countless other initiatives, she is a recognized leader in the broader Des Moines community. In 2001 she and her husband, Harry Bookey, purchased a 98 year-old Masonic Temple, restored the historic building, and turned it into the Temple for Performing Arts — a catalyst for widespread downtown revitalization and development. The Temple is now home to several local businesses, as well as a theater. She is involved with Des Moines' urban revitalization and development as well as the creation and design of four restaurants. As the founding President of the Greater Des Moines Public Art Foundation, she has led the charge in shaping the aesthetics of Des Moines residents' surroundings, bringing art by world renowned artists to the city.

David Dahlquist | Partner, RDG Planning & Design, RDG Dahlquist Art Studio
316 SW 5th Street, Des Moines, Iowa 50309
Term is open; resigned 3/2012

David B. Dahlquist is a nationally recognized public artist and teacher. He is the Creative Director of RDG Dahlquist Art Studio, a comprehensive design and fabrication facility within RDG Planning & Design, specializing in the integration of artwork within building architecture and the landscape. David and the studio have completed over 50 major public art installations across the country.

Lois Fingerman | Art Collector
Independent Civic & Social Organization
Professional
2909 Cayuga Point
Des Moines, Iowa 50321
Third term expires 12/2014

A Boston native who moved to Des Moines in 1967, Lois Fingerman worked for a number of years as Counseling Manager of Planned Parenthood of Greater Iowa, Program Supervisor of The Family Violence Center, and Director of Mentor Iowa. As a community activist and volunteer she has served of numerous boards and commissions, including 16 years as a member of the Child Death Review Team of Iowa. Among numerous honors, she was recognized as a Women of Achievement in 2001. Currently, Fingerman is volunteering as a docent at the Des Moines Art Center, as well as a board member of the Art Center and acting chair of the museum's Acquisition Committee.

Jeff Fleming | Director, Des Moines Art Center
4700 Grand Avenue, Des Moines, Iowa 50312
Third term expires 12/2013

Director of the Des Moines Art Center, Jeff Fleming also has served as its acting director, deputy director, senior curator, and curator. He was chief curator of exhibitions at the Southeastern Center for Contemporary Art in Winston-Salem, North Carolina. Fleming studied at East Carolina University in Greenville, North Carolina and holds a master of fine arts degree from Pratt Institute in Brooklyn, New York. His exhibition projects have focused on presenting the first one-person museum shows for younger, international artists. These artists include the American artists Tom Sachs, John Currin, Ellen Gallagher, Maya Lin, and Tom Friedman, as well as the British artist Cecily Brown, the German artists Christian Jankowski and Anselm Reyle, and the Chinese artist Yan Pei Ming. In 2011, *Art and Living* magazine named him one of eleven innovative directors of American museums.

Randall H. Hamilton, MD | Neurologist, Mercy Ruan Neurology Clinic and Research Center
1111 6th Avenue, East Tower, Suite A100
Des Moines, Iowa 50314
First term expires 12/2012

A native of Newton, Iowa, Randall Hamilton is a neurologist at Mercy Clinics, Inc., Iowa, where he has practiced in the Greater Des Moines area since 1996. Following his studies in microbiology and medicine at the University of Iowa in Iowa City, he joined the Mercy family to focus his interest in Parkinson's disease and other movement disorders. Dr. Hamilton travels from Des Moines to Winterset, Iowa where he directs a general neurology outreach practice. In 2004, he took a leave of absence from medicine to pursue a lifelong interest in architecture, earning his Masters in Architecture at Iowa State University, Ames in 2007. He is active member of the Des Moines Art Center Print Club, as well as effective volunteer who has served the museum on several committees. Dr. Hamilton has been playing piano since age seven and is an avid supporter of the Des Moines Symphony Orchestra; he currently serves on its Board of Trustees.

The Honorable Christine L. Hensley
Des Moines City Council
400 Robert D. Ray Drive
Des Moines, Iowa 50309-1891
Third term expires 12/2013

Council member Christine Hensley was elected to the Des Moines City Council in January 1994 and serves Ward III of Des Moines. She was reelected to a fifth four-year term in November 2009. She is committed to public service and community enrichment, and is a member of numerous boards, including Iowa Student Loan Liquidity Corporation, BRAVO, Metropolitan Planning Organization, Des Moines Area Regional Transit (DART), Rebuilding Together, Des Moines Art Center, Des Moines Arts Festival, Iowa Bankers Association Board, Des Moines Symphony, Polk County Housing Trust Fund, Metro Advisory Council, Neighborhood Finance Corporation and Pappajohn Higher Education Foundation. In her professional career, Hensley was the Regional Community and Government Affairs Officer for Bank of the West, covering eight midwest states. Hensley was born and raised in Des Moines, Iowa and attended St. Joseph's Academy and Drake University.

BOARD OF DIRECTORS

G. David Hurd | Chairman Emeritus
Principal Financial Group | Community Leader
300 Walnut Street, Box #183
Des Moines, Iowa 50309-2224
Third term expires 12/2013

A native of Chicago, David Hurd is Emeritus Chairman of the Principal Financial Group, the leading global financial provider and U.S. leader in 401(k) plans. He currently serves on the boards or volunteers for several nonprofit organizations, mostly in the Des Moines area. His distinguished career includes numerous awards: Honorary Doctor of Public Service – Drake University; Iowa Insurance Hall of Fame; Des Moines Register's Iowa Business Leader of the Year; Greater Des Moines Committee Iowa Business Hall of Fame; Community Commitment Award – Greater Des Moines Partnership, Outstanding Volunteer Fundraiser – National Society of Fundraising Executives; the Lilywhite Award – Employee Benefit Research Institute, to name only a few.

SECRETARY | **Kristi Lund Lozier** | Artist
3511 St. Johns Road, Des Moines, Iowa 50312
Third term expires 12/2013

Former media director and VP of marketing, Lozier is a community leader and artist. She studied at the University of Nevada where she earned a Bachelor of Arts degree in art and journalism. She has been a regular participant in Aspen Ideas Festival, Aspen Institute in Colorado, which brings together leaders from the U.S. and abroad. Lozier was co-founder and president of Greenwood Historic Neighborhood Association, a sponsor of the "Lost Boys from Sudan," and has been active in numerous organizations, including Ballet Iowa, Best Buddies, Central Presbyterian Church, Des Moines Metro Opera, Des Moines Public Schools, Des Moines Symphony Alliance, Orchard Place, and Junior League of Des Moines. She was appointed to the Greater Des Moines Public Art Commission in 2001, and has served on the Foundation Board since 2004.

PRESIDENT | **Paul Mankins**
FAIA LEED® AP | Principal, substance
ARCHITECTURE INTERIORS DESIGN
1300 Walnut Street, Suite 201
Des Moines, Iowa 50309
Third term expires 12/2013

Paul Mankins began his career in the office of Charles Herbert & Associates — Iowa's most celebrated design practice. Following graduate studies at Yale University and professional stints with Smith Miller + Hawkinson in New York City and Kaplan McLaughlin Diaz in San Francisco, he returned to Iowa working with Herbert Lewis Kruse Blunck Architecture where he was named a Principal in 1999. In 2004, he and his partners formed substance

— a nationally recognized collaborative design practice engaged in architecture, interior architecture, and design. Also in 2004, he was elected to the College of Fellows of the American Institute of Architects. Mankins has directed the design of projects recognized with over 35 Honor and Merit Awards for design from the Central States Region, Iowa, and San Francisco Chapters of the American Institute of Architects. Since 1998 he has served as an Adjunct Instructor teaching Architectural Design in the Department of Architecture at Iowa State University, Ames. His work has been published widely and he is a frequent speaker and design awards juror.

VICE-PRESIDENT | **Katherine Murphy**
AVP/Community Support, Wells Fargo Bank
666 Walnut Street, Des Moines, Iowa 50309
Second term expires 12/2014

Kathy Murphy currently serves as Community Affairs Manager for Wells Fargo Bank in Des Moines. Her responsibilities include planning and coordinating community sponsorships, charitable giving, volunteerism, and the annual Community Support, United Way campaign. She studied at Connecticut College on the southern New England coast and earned her undergraduate degree in English at the University of Iowa. Before joining Wells Fargo in 1998, she managed Percival Galleries in Des Moines for two years, and was a senior manager for Younkers' chain of retail stores. Currently, she also serves as Vice President of The Hoyt Sherman Place Foundation in Des Moines and heads its development committee.

Cynthia A. O'Brien | Associate AIA, LEED® AP
Director of Design 515
3810 Brentwood Drive, Des Moines, Iowa 50312
First term expires 12/2012

Cynthia O'Brien is an Associate with the American Institute of Architects and is a LEED Accredited Professional. Her focus is to raise the awareness of green building and sustainable design in the residential market. Ms. O'Brien holds a Master of Architecture degree from Iowa State University, and a B.F.A. from Drake University in Architectural Interior Design with a Business Marketing Minor and an emphasis in Art History. She is also active in the community serving on boards such as the Des Moines Public Library Foundation, The National Society of The Colonial Dames of America in the State of Iowa and The O'Brien Family Foundation.

Anastasia Polydorán | Art Collector
5110 Pleasant Street, Des Moines, Iowa 50312
Second term expires 12/2014

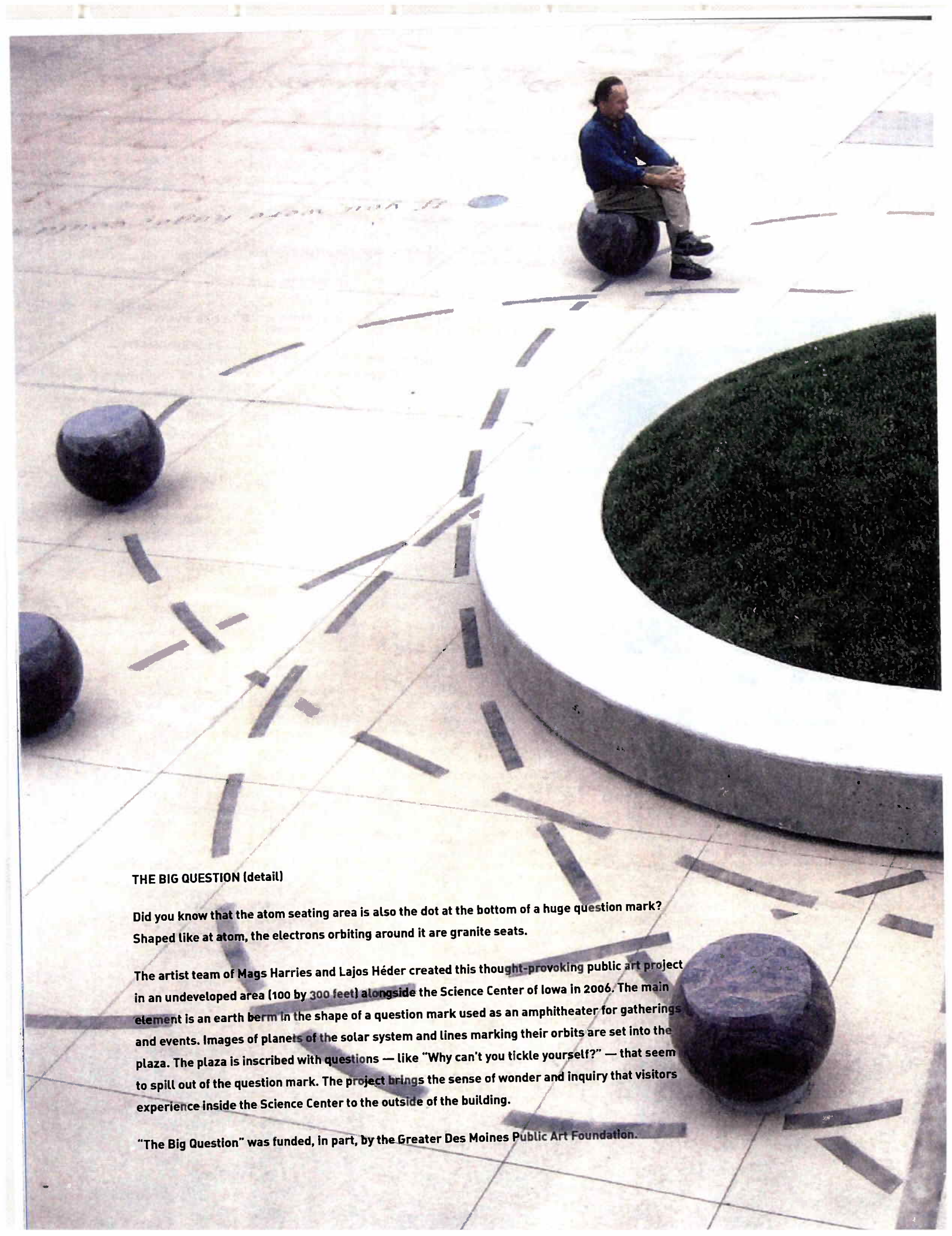
A native of Milwaukee, Wisconsin, Anastasia Polydorán, is a devoted art advocate and collector of contemporary art. She has been an active members of numerous nonprofit boards and committees throughout Greater Des Moines for many years. With her late husband, she established the Paul and Anastasia Polydorán Collection at the Des Moines Art Center, and regularly gifts contemporary works of art to the museum. She joined the Des Moines Art Center Board of Directors and has been a long standing member of the museum's Acquisition Committee. She is past president of the Des Moines Playhouse.

Pat Schneider | Community Leader | Associate,
Ferguson Commercial Real Estate Services
1840 NW 118th Street, Suite 100
Clive, Iowa 50325
First term expires 12/2012

Pat Schneider has been a Commercial Real Estate agent for more than 15 years. Previously, she was with West Real Estate focusing in the sales and marketing arena. It was during this time she became directly involved with a number of community organizations and developed a passion for volunteering. Schneider serves on the boards of the Des Moines Art Center, Des Moines Playhouse, Planned Parenthood Foundation, Eyerly Ball Mental Health Center, Drake University Bulldog Board, Tittle Guaranty, and Blank Park Zoo Capital Campaign. She is a past president of the Junior League of Des Moines and Polk County Medical Auxiliary. In 2006, she was named a Woman of Influence by the Des Moines Business Record.

EX-OFFICIO
LEGAL ADVISOR | **Carol J. Moser**
Assistant City Attorney
City of Des Moines
400 Robert D. Ray Drive, 3rd Floor Legal
Department, Des Moines, Iowa 50309

Carol J. Moser is a graduate of Drake University Law School, Iowa. She is a member of the Des Moines City Attorney's Office where she has held a number of positions—initially as a prosecutor, then as the police legal advisor in the Des Moines Police Department. Moser has served as president of the Iowa Municipal Attorney's Association, president of Polk County Women Attorneys, Chair of the Greater Des Moines Leadership Institute, president of the Polk County Bar Association's Volunteer Lawyer's Project, President of the Civic Music Association, a Governor of the Iowa State Bar Association and she was a recipient of the Polk County Bar Association's Award of Merit in 2004.



THE BIG QUESTION (detail)

Did you know that the atom seating area is also the dot at the bottom of a huge question mark? Shaped like an atom, the electrons orbiting around it are granite seats.

The artist team of Mags Harries and Lajos Héder created this thought-provoking public art project in an undeveloped area (100 by 300 feet) alongside the Science Center of Iowa in 2006. The main element is an earth berm in the shape of a question mark used as an amphitheater for gatherings and events. Images of planets of the solar system and lines marking their orbits are set into the plaza. The plaza is inscribed with questions — like “Why can’t you tickle yourself?” — that seem to spill out of the question mark. The project brings the sense of wonder and inquiry that visitors experience inside the Science Center to the outside of the building.

“The Big Question” was funded, in part, by the Greater Des Moines Public Art Foundation.

GREATER DES MOINES PUBLIC ART FOUNDATION FINANCIALS

STATEMENT OF OPERATIONS FOR
JULY 1, 2011 THROUGH JUNE 30, 2012

SUPPORT AND REVENUE

GIFTS AND GRANTS

Individual	\$36,069.96
Foundation / Corporate	\$203,192.49
City of Des Moines	\$100,000
TOTAL SUPPORT AND REVENUE	\$339,262.45

EXPENSES

ADMINISTRATIVE

Accounting	\$5,889.49
Insurance	\$2,439.56
Bank Services and Misc	\$781.33
Consulting Services	\$54,591.00
TOTAL ADMINISTRATIVE	\$63,701.38

PUBLIC ART PROGRAM

Projects

6th Avenue Bridge	\$10,945.06
Artstop	\$10,000
City of Des Moines Performance Report	\$7,750.00
Insurance	\$3,672.44
Kaneko-Court Avenue Pump Station Mural	\$10,113.87
Website	\$1,716.77
Other	\$2,523.75
Care and Conservation	\$8,014.50
Printing	\$1,716.77
Total Projects	\$61,031.39

Development

Community Engagement	\$6,844.42
Marketing	\$5,630.00
Total Development	\$12,474.42

Education

Online curriculum resources	\$640.00
Total Education	\$640.00

TOTAL PUBLIC ART PROGRAM **\$74,145.81**

TOTAL EXPENSES **\$137,847.19**

CHANGE IN NET ASSETS	\$201,415.26
NET ASSETS, BEGINNING OF YEAR	\$547,069.64
NET ASSETS, YEAR TO DATE	\$748,484.90

UNAUDITED FIGURES

STATEMENT OF FINANCIAL POSITION
AS OF JUNE 30, 2012

ASSETS

Money Market	\$545,359.90
Accounts Receivable	\$203,125.00
TOTAL ASSETS	\$748,484.90

NET ASSETS

Unrestricted Net Assets	\$239,429.93
Board Restricted Net Assets	\$509,054.97

TOTAL NET ASSETS **\$748,484.90**

TOTAL LIABILITIES AND NET ASSETS **\$748,484.90**



Organized by M. Jessica Rowe
Design by Connie Wilson
Greater Des Moines Public Art Foundation
1915 Grand Avenue | Des Moines, Iowa 50309
www.dsmpublicartfoundation.org
© Greater Des Moines Public Art Foundation 2012 | All rights reserved

COVER

Jun Kaneko (American, born Japan, 1942)
Untitled, Dangos (2001-2009)
App. 7.5 feet tall each, Hand built glazed ceramic
Collection of Greater Des Moines Public Art Foundation, 2010.1-5
Photo: Jun Kaneko Studio