

DATE March 25, 2013

PUBLIC HEARING, APPROVING PLANS, SPECIFICATIONS, FORM OF CONTRACT DOCUMENTS, AND ENGINEER'S ESTIMATE ON S.E. 20TH STREET STORM SEWER - SCOTT AVENUE TO 500 FEET NORTH; RECEIVE AND FILE BIDS; AND DESIGNATION OF LOWEST RESPONSIVE, RESPONSIBLE BIDDER AS SANDSTONE MANAGEMENT, LTD., BRANDON VAN VLEET, PRESIDENT, \$72,075.00

WHEREAS, on February 25, 2013, under Roll Call No. 13-0288, plans, specifications, form of contract documents, and Engineer's estimate of construction cost were filed with the City Clerk, for the construction of the following improvement:

S.E. 20th Street Storm Sewer - Scott Avenue to 500 Feet North, 08-2013-002

The improvement includes construction of a new storm sewer in S.E. 20th Street from Scott Avenue to 500 feet north of Scott Avenue, installation of manholes, restoration of pavement, and other incidental items; all in accordance with the contract documents including Plan File Nos.549-048/055, located in Des Moines, Iowa

WHEREAS, notice of the hearing on the plans, specifications, form of contract documents, and Engineer's estimate of construction cost was published as required by law.

NOW, THEREFORE, BE IT RESOLVED BY THE CITY COUNCIL OF THE CITY OF DES MOINES, IOWA: That the hearing on the plans, specifications, form of contract documents, and Engineer's estimate of construction cost for said improvement be closed; and that said plans, specifications, form of contract documents, and Engineer's estimate of construction cost are hereby approved as the plans, specifications, form of contract documents, and Engineer's estimate of construction cost for said improvement.

BE IT FURTHER RESOLVED: That sealed bids for said improvement were submitted by the following bidders:

★ **Roll Call Number**

Agenda Item Number

49

DATE March 25, 2013

Sandstone Management, LTD.	Carlisle, IA
Reilly Construction Co., Inc.	Ossian, IA
The Underground Company, Ltd.	Carlisle, IA
T K Concrete Inc.	Pella, IA
Vanderpool Construction, Inc.	Indianola, IA
McAninch Corporation	Des Moines, IA
Keller Excavating, Inc.	Boone, IA
Raccoon Valley Contractors, LLC.	Waukee, IA
MPS Engineers, P.C.	Des Moines, IA
J & K Contracting, LLC	Ames, IA
Pohlmeier Construction, Inc.	Bondurant, IA

which were received and opened at a public meeting presided over by the Engineer in the City Council Chambers, 2nd Floor, City Hall, 400 Robert D. Ray Drive, Des Moines, Iowa at 11:00 a.m. on March 12, 2013. Said bids and the attached tabulation of bids for said improvement be and are hereby received and filed.

BE IT FURTHER RESOLVED: That the Des Moines City Engineer, as the Engineer, has determined that the lowest responsive, responsible bid for the construction of said improvement was submitted by Sandstone Management, LTD., Brandon Van Vleet, President, 15 School Street, Carlisle, IA, 50047 in the amount of \$72,075.00, and said bid be and the same is hereby accepted.

BE IT FURTHER RESOLVED: That the bid security of the unsuccessful bidders be and is hereby authorized and directed to be returned.

DATE March 25, 2013

BE IT FURTHER RESOLVED: That the Engineer is hereby directed to secure execution by the lowest responsible, responsive Bidder and its surety of the contract documents in the form heretofore approved by this Council; that the Engineer is directed to thereafter present said contract documents to this Council for approval and authorization to the Mayor to sign; and that no contract shall be deemed to exist between the City of Des Moines and said Bidder until said contract has been executed by the Bidder, and shall have been approved by this Council and executed by the Mayor and attested to by the City Clerk.

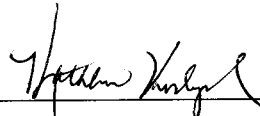
BE IT FURTHER RESOLVED: That the City Council hereby authorizes the necessary road closures for the Project.

(City Council Communication Number 13-135 attached.)

Moved by _____ to adopt.

FORM APPROVED:

FUNDS AVAILABLE


 Kathleen Vanderpool
 Deputy City Attorney


 Scott E. Sanders
 Des Moines Finance Director

Funding Source: 2013-2014 CIP, Page Street - 36, Southeast Connector - S.E. 14th Street to S.E. 30th Street, STR249, G. O. Bonds

3

COUNCIL ACTION	YEAS	NAYS	PASS	ABSENT
COWNIE				
COLEMAN				
GRIESS				
HENSLEY				
MAHAFFEY				
MEYER				
MOORE				
TOTAL				

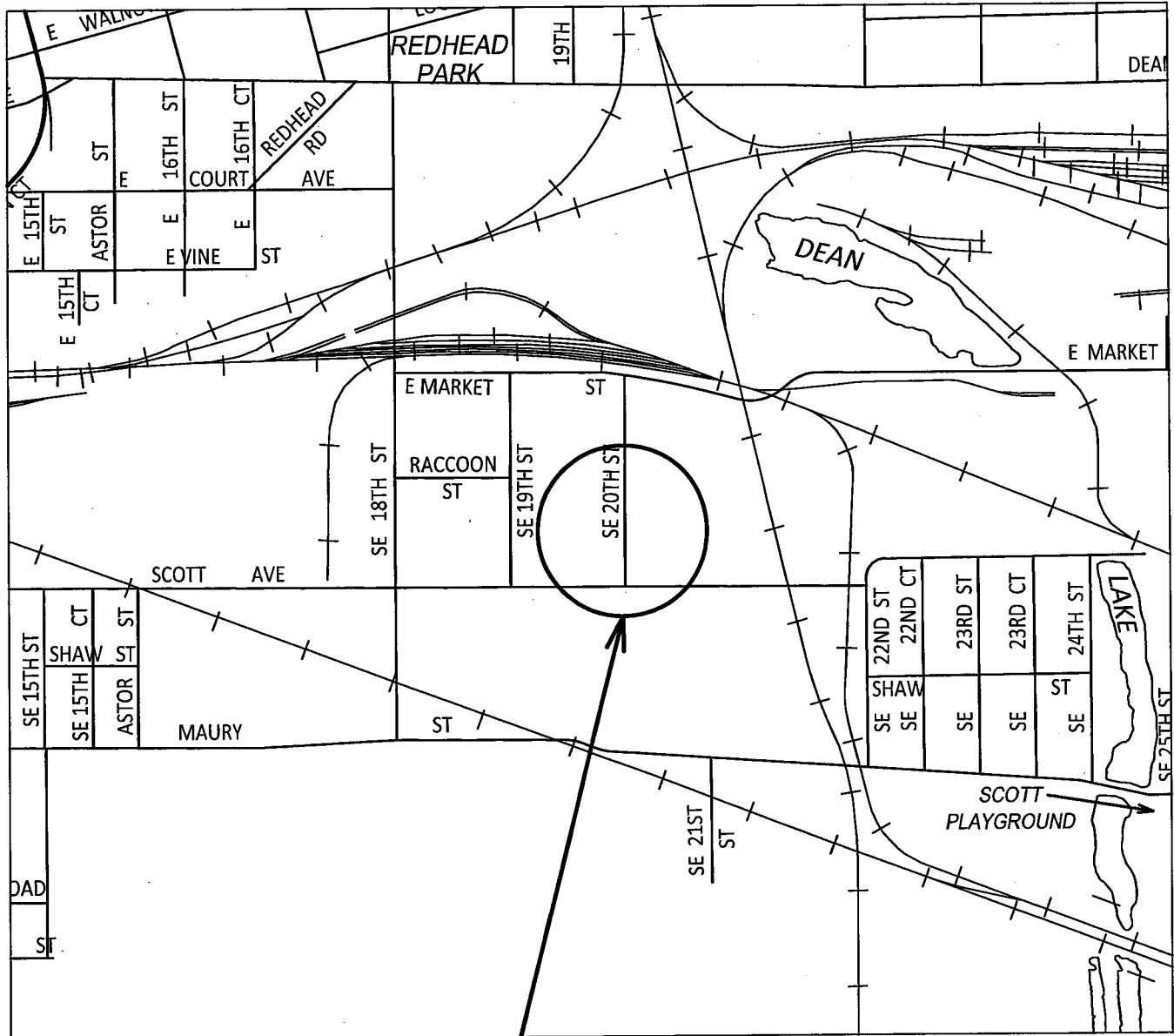
MOTION CARRIED APPROVED

 Mayor

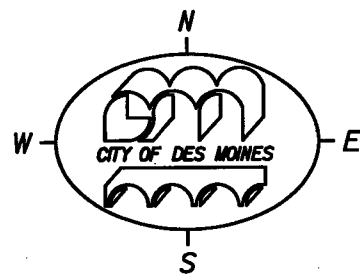
I, Diane Rauh, City Clerk of said City Council, hereby certify that at a meeting of the City Council, held on the above date, among other proceedings the above was adopted.

IN WITNESS WHEREOF, I have hereunto set my hand and affixed my seal the day and year first above written.

 City Clerk



**PROJECT
LOCATION**



**S.E. 20th STREET STORM SEWER
SCOTT AVE TO 500 FEET NORTH
ACTIVITY I.D. 08-2013-002**

TABULATED BY: M. Becker
CHECKED BY: *[Signature]*

APPROVED BY: *[Signature]*

CONTRACTOR'S BID TABULATION

PROJECT: S.E. 20th STREET STORM SEWER - SCOTT AVE to 500 FT NORTH

ESTIMATE

ITEM	DESCRIPTION	QUANTITY	UNIT PRICE	AMOUNT	Sandstone Management Carlisle, Iowa	Reilly Construction Co Ossian, Iowa	The Underground Company Carlisle, Iowa	TK Concrete, Inc. Pella, Iowa
			PRICE	AMOUNT	BID PRICE	BID PRICE	BID PRICE	BID PRICE
1	Pavement Removal	80 SY	\$15.00	\$1,200.00				
2	Storm Sewer Removal, 30"	40 LF	\$20.00	\$800.00				
3	Connect to Existing Manhole	1 EACH	\$1,000.00	\$1,000.00				
4	Storm Sewer, 30" RCP	520 LF	\$150.00	\$78,000.00				
5	Storm Sewer, 42" RCP	40 LF	\$175.00	\$7,000.00				
6	SW-403 Storm Manhole, Modified 4' x 4'	2 EACH	\$4,500.00	\$9,000.00				
7	SW-403 Storm Manhole, Modified 4' x 6'	1 EACH	\$6,000.00	\$6,000.00				
8	Asphalt Millings, Place Only	300 CY	\$15.00	\$4,500.00				
9	PCC Patch, 8"	30 SY	\$100.00	\$3,000.00				
10	HMA Patch, 10.5" (3M ESAL)	49 SY	\$75.00	\$3,675.00				
11	Curb & Gutter, PCC 2.5' Remove & Replace	45 LF	\$45.00	\$2,025.00				
12	Project Sign Small, Standard	1 EACH	\$100.00	\$100.00				
13	Traffic Control	1 LS	\$1,500.00	\$1,500.00				
14	Mobilization	1 LS	\$4,200.00	\$4,200.00				
				\$122,000.00				
TOTAL CONSTRUCTION COST					\$72,075.00	\$90,885.00	\$97,620.00	\$103,580.00
PERCENT OF ENGINEER'S ESTIMATE					-40.92%	-25.50%	-19.98%	-15.10%
					LOW			

49

TABULATED BY: M. Becker
CHECKED BY: *JMC* APPROVED BY: _____

CONTRACTOR'S BID TABULATION

PROJECT: S.E. 20th STREET STORM SEWER - SCOTT AVE to 500 FT NORTH

ESTIMATE

ITEM	DESCRIPTION	QUANTITY	UNIT PRICE	AMOUNT	UNIT PRICE	AMOUNT	BID PRICE	UNIT PRICE	AMOUNT
1	Pavement Removal	80 SY	\$15.00	\$1,200.00	\$66.56	\$5,324.80			
2	Storm Sewer Removal, 30"	40 LF	\$20.00	\$800.00	\$33.00	\$1,320.00			
3	Connect to Existing Manhole	1 EACH	\$1,000.00	\$1,000.00	\$1,250.00	\$1,250.00			
4	Storm Sewer, 30" RCP	520 LF	\$150.00	\$78,000.00	\$101.67	\$52,868.40			
5	Storm Sewer, 42" RCP	40 LF	\$175.00	\$7,000.00	\$180.00	\$7,200.00			
6	SW-403 Storm Manhole, Modified 4' x 4'	2 EACH	\$4,500.00	\$9,000.00	\$3,800.00	\$7,600.00			
7	SW-403 Storm Manhole, Modified 4' x 6'	1 EACH	\$6,000.00	\$6,000.00	\$4,350.00	\$4,350.00			
8	Asphalt Millings, Place Only	300 CY	\$15.00	\$4,500.00	\$33.77	\$10,131.00			
9	PCC Patch, 8"	30 SY	\$100.00	\$3,000.00	\$92.70	\$2,781.00			
10	HMA Patch, 10.5" (3M ESAL)	49 SY	\$75.00	\$3,675.00	\$107.15	\$5,250.35			
11	Curb & Gutter, PCC 2.5' Remove & Replace	45 LF	\$45.00	\$2,025.00	\$45.00	\$2,025.00			
12	Project Sign Small, Standard	1 EACH	\$100.00	\$100.00	\$175.00	\$175.00			
13	Traffic Control	1 LS	\$1,500.00	\$1,500.00	\$1,245.00	\$1,245.00			
14	Mobilization	1 LS	\$4,200.00	\$4,200.00	\$6,659.00	\$6,659.00			
				\$122,000.00					

TOTAL CONSTRUCTION COST
PERCENT OF ENGINEER'S ESTIMATE

\$108,179.55
-11.33%

\$112,058.00
-8.15%

\$116,364.50
-4.62%

\$119,236.00
-2.27%

CONTRACTOR	BID SECURITY 10% Bid Bond	BID PRICE
Vanderpool Construction Indianola, Iowa	\$108,179.55	\$108,179.55
McAninch Corporation Des Moines, Iowa	\$112,058.00	\$112,058.00
Keller Excavating Boone, Iowa	\$116,364.50	\$116,364.50
Raccoon Valley Contractors Waukee, Iowa	\$119,236.00	\$119,236.00

49

TABULATED BY: M. Becker
CHECKED BY: *[Signature]*
APPROVED BY: _____

CONTRACTOR'S BID TABULATION
PROJECT: S.E. 20th STREET STORM SEWER - SCOTT AVE to 500 FT NORTH

-----ESTIMATE-----

ITEM	DESCRIPTION	QUANTITY	UNIT	PRICE	AMOUNT
1	Pavement Removal	80 SY		\$15.00	\$1,200.00
2	Storm Sewer Removal, 30"	40 LF		\$20.00	\$800.00
3	Connect to Existing Manhole	1 EACH		\$1,000.00	\$1,000.00
4	Storm Sewer, 30" RCP	520 LF		\$150.00	\$78,000.00
5	Storm Sewer, 42" RCP	40 LF		\$175.00	\$7,000.00
6	SW-403 Storm Manhole, Modified 4' x 4'	2 EACH		\$4,500.00	\$9,000.00
7	SW-403 Storm Manhole, Modified 4' x 6'	1 EACH		\$6,000.00	\$6,000.00
8	Asphalt Millings, Place Only	300 CY		\$15.00	\$4,500.00
9	PCC Patch, 8"	30 SY		\$100.00	\$3,000.00
10	HMA Patch, 10.5" (3M ESAL)	49 SY		\$75.00	\$3,675.00
11	Curb & Gutter, PCC 2.5' Remove & Replace	45 LF		\$45.00	\$2,025.00
12	Project Sign Small, Standard	1 EACH		\$100.00	\$100.00
13	Traffic Control	1 LS		\$1,500.00	\$1,500.00
14	Mobilization	1 LS		\$4,200.00	\$4,200.00

TOTAL CONSTRUCTION COST
PERCENT OF ENGINEER'S ESTIMATE

\$122,000.00

\$120,103.00
-1.55%

MPS Engineers Des Moines, Iowa		J&K Contracting, LLC Ames, Iowa		Pohlmeier Construction Bondurant, Iowa	
BID SECURITY 10% Bid Bond	BID PRICE	BID SECURITY Bid Bond \$14,762	BID PRICE	BID SECURITY 10% Bid Bond	BID PRICE
UNIT	PRICE	UNIT	PRICE	UNIT	PRICE
AMOUNT	AMOUNT	AMOUNT	AMOUNT	AMOUNT	AMOUNT
\$12.00	\$960.00	\$21.10	\$1,688.00	\$15.00	\$1,200.00
\$20.00	\$800.00	\$19.80	\$792.00	\$25.00	\$1,000.00
\$1,000.00	\$1,000.00	\$1,754.70	\$1,754.70	\$2,500.00	\$2,500.00
\$132.00	\$68,640.00	\$128.10	\$66,612.00	\$190.00	\$98,800.00
\$168.00	\$6,720.00	\$149.20	\$5,968.00	\$250.00	\$10,000.00
\$4,875.00	\$9,750.00	\$7,008.70	\$14,017.40	\$4,500.00	\$9,000.00
\$5,980.00	\$5,980.00	\$7,939.40	\$7,939.40	\$5,000.00	\$5,000.00
\$21.00	\$6,300.00	\$12.70	\$3,810.00	\$25.00	\$7,500.00
\$101.00	\$3,030.00	\$90.90	\$2,727.00	\$115.00	\$3,450.00
\$89.00	\$4,361.00	\$103.10	\$5,051.90	\$125.00	\$6,125.00
\$45.00	\$2,025.00	\$46.00	\$2,070.00	\$45.00	\$2,025.00
\$172.50	\$172.50	\$151.50	\$151.50	\$100.00	\$100.00
\$1,374.25	\$1,374.25	\$1,207.00	\$1,207.00	\$2,500.00	\$2,500.00
\$8,990.25	\$8,990.25	\$13,996.70	\$13,996.70	\$10,000.00	\$10,000.00

\$127,785.60
+4.74%

\$159,200.00
+30.49%

\$0.00
-100.00%

49