

Date May 23, 2016

SET HEARING FOR THE PROPOSED PURCHASE OF CITY-OWNED PROPERTY IN THE SE AGRIMERGENT BUSINESS PARK BY CROSSROADS COLD STORAGE, LLC PURSUANT TO DEVELOPMENT AGREEMENT, AND APPROVING RIGHT-OF-ENTRY

WHEREAS, on June 22, 2015, by Roll Call No. 15-1091, the City Council received and filed a proposal from Des Moines Cold Storage, Inc., on behalf of itself and Crossroads Cold Storage, LLC (collectively "Developer"), for purchase of City-owned property at SE 43rd and Vandalia Road in the City's SE Agrimergent Business Park (also known as the SE AgriBusiness Park Urban Renewal Area) for relocation and expansion of the home office of the Developer's multi-state business; and

WHEREAS, on April 11, 2016, by Roll Call No. 16-0584, the City Council received and filed Council Communication No. 16-169 from the City Manager regarding Developer's proposed purchase and redevelopment of the Property, and directed the City Manager to negotiate a development agreement with Developer; and

WHEREAS, in accordance with said direction, City Economic Development staff and Developer have negotiated terms of an Urban Renewal Development Agreement, including but not limited to the following:

1. Sale by City to Crossroads Cold Storage, LLC of 24.25 acres of land on the south side of Vandalia Road, as legally described below, for \$363,750 (\$15,000 per acre) for Phase I of the development to be used by Des Moines Cold Storage, Inc.
2. Sale by City to Crossroads Cold Storage, LLC of an Option to Purchase Real Property in 18.71 acres of land adjoining the Phase I property, as legally described below, for \$1,000 for Phase II of the development. Said Option must be exercised by Developer within five calendar years of recording thereof, and includes a purchase price of \$280,650 (\$15,000 per acre) for the Phase II property.
3. Provision of an in-kind Economic Development Grant of 90,000 cubic yards of fill material from City-owned land, valued at \$900,000, for use in filling, grading and improving the property and preparing the property for the Phase I improvements.
4. Economic Development Grant by City to Developer providing either the anticipated amount of \$2,229,279 in Iowa Code Chapter 427B property tax exemption and 75% of project generated tax increment (TIF) thereafter for 11 years, or the anticipated amount of \$2,239,222 in 75% of project generated tax increment (TIF) for ten years and 50% of project generated tax increment (TIF) thereafter for 5 years.
5. Phase I of Developer's project will construct an estimated \$18,000,000 project including a building of a minimum of 110,000 square feet, site improvement, and rail access improvements, to relocate the Des Moines Cold Storage home office. Phase II of Developer's project includes further expansion of Des Moines Cold Storage facility and operations, and will require separate Conceptual Development Plan approval and separately negotiated financial incentives if applicable; and

WHEREAS, there is no current or future City need or benefit for the property to be sold, the City will not be inconvenienced by the sale of the property or option therein, and the City's Office of Economic Development recommends approval of the sale and option as in the best interests of the City; and

WHEREAS, the Developer has requested a temporary Right-of-Entry to access the property to immediately commence testing, grading and filling the site.

Date May 23, 2016

NOW, THEREFORE, BE IT RESOLVED by the City Council of the City of Des Moines, Iowa, that:

1. The City of Des Moines, Iowa proposes to sell 24.25 acres of City-owned real property located at SE 43rd Street and Vandalia Road in the SE Agrimergent Business Park, in the vicinity of the 3801 block of Vandalia Road, to Crossroad Cold Storage, LLC for the purchase price of \$363,750, which property is legally described as follows, subject to the terms of the Development Agreement as on file in the office of the City Clerk:

PARCEL 2016-123 BEING PART OF THE NORTHWEST QUARTER OF SECTION 17, TOWNSHIP 78 NORTH, RANGE 23 WEST OF THE 5TH P.M., CITY OF DES MOINES, POLK COUNTY, IOWA BEING MORE PARTICULARLY DESCRIBED AS FOLLOWS:
COMMENCING FROM THE NORTH QUARTER CORNER OF SAID SECTION 17; THENCE ALONG THE NORTH LINE OF SAID SECTION 17 N87°28'58"W, 1416.77 FEET; THENCE S02°21'02"W, 50.00 FEET TO THE POINT OF BEGINNING; THENCE S87°28'58"E, 1272.55 FEET; THENCE 206.92 FEET ALONG A 136.00 FOOT RADIUS CURVE, CONCAVE SOUTHWEST, CHORD BEARING S43°45'46"E, 187.53 FEET; THENCE S00°01'28"E, 576.53 FEET; THENCE N87°28'58"W, 1431.60 FEET; THENCE N02°21'02"E, 705.57 FEET TO THE POINT OF BEGINNING. DESCRIBED AREA CONTAINS 22.87 ACRES AND IS SUBJECT TO EASEMENTS AND RESTRICTIONS OF RECORD.

2. The City of Des Moines, Iowa proposes to sell an Option to Purchase Real Property for 18.71 acres of City-owned real property located at SE 43rd Street and Vandalia Road in the SE Agrimergent Business Park, in the vicinity of the 3801 block of Vandalia Road, to Crossroad Cold Storage, LLC for the purchase price of \$1,000, which property is legally described as follows, subject to the terms of the Development Agreement and Option as on file in the office of the City Clerk:

THE WEST 1305 FEET OF THE SOUTH 565 FEET OF THE NORTHEAST QUARTER (NE1/4) OF THE NORTHWEST QUARTER (NW1/4) AND THE EAST 150 FEET OF THE SOUTH 560 FEET OF THE NORTHWEST QUARTER (NW1/4) OF THE NORTHWEST QUARTER (NW1/4) OF SECTION SEVENTEEN (S17), TOWNSHIP SEVENTY-EIGHT NORTH (T78N), RANGE TWENTY-THREE WEST (R23W) OF THE FIFTH PRINCIPAL MERIDIAN (5TH P.M.), ALL NOW INCLUDED IN AND FORMING A PART OF THE CITY OF DES MOINES, COUNTY OF POLK, STATE OF IOWA, SUBJECT TO EASEMENTS OF RECORD, AND CONTAINING APPROXIMATELY 18.91 ACRES (823,578 SQUARE FEET).

Subject to survey provided by Developer upon request of the City of Des Moines, Real Estate Division.

3. A public hearing is hereby set for June 27, 2016, at 5:00 p.m. at the Municipal Services Center, 1551 Martin Luther King Jr. Parkway, Des Moines, Iowa. At that time, the City Council will consider the above described proposal and any other(s) submitted prior to or during the public hearing.

4. The City Clerk is hereby authorized and directed to publish notice of the proposal and hearing in the form hereto attached, all in accordance with Section 362.3 of the Iowa Code.

5. The City Manager and/or Real Estate Division Director are hereby authorized and directed to execute a temporary Right-of-Entry from the City to the Developer to immediately access the above-described real property, subject to the requirement that the Developer return the property to its original condition in the event that the Development Agreement and property sale are not approved by City Council.

★ Roll Call Number

Agenda Item Number

20

Date May 23, 2016

(Council Comm. No. 16-275)

Moved by _____ to adopt.

APPROVED AS TO FORM:

Glenna K. Frank

Glenna K. Frank, Assistant City Attorney

COUNCIL ACTION	YEAS	NAYS	PASS	ABSENT
COWNIE				
COLEMAN				
GATTO				
GRAY				
HENSLEY				
MOORE				
WESTERGAARD				
TOTAL				

MOTION CARRIED

APPROVED

Mayor

CERTIFICATE

I, DIANE RAUH, City Clerk of said City hereby certify that at a meeting of the City Council of said City of Des Moines, held on the above date, among other proceedings the above was adopted.

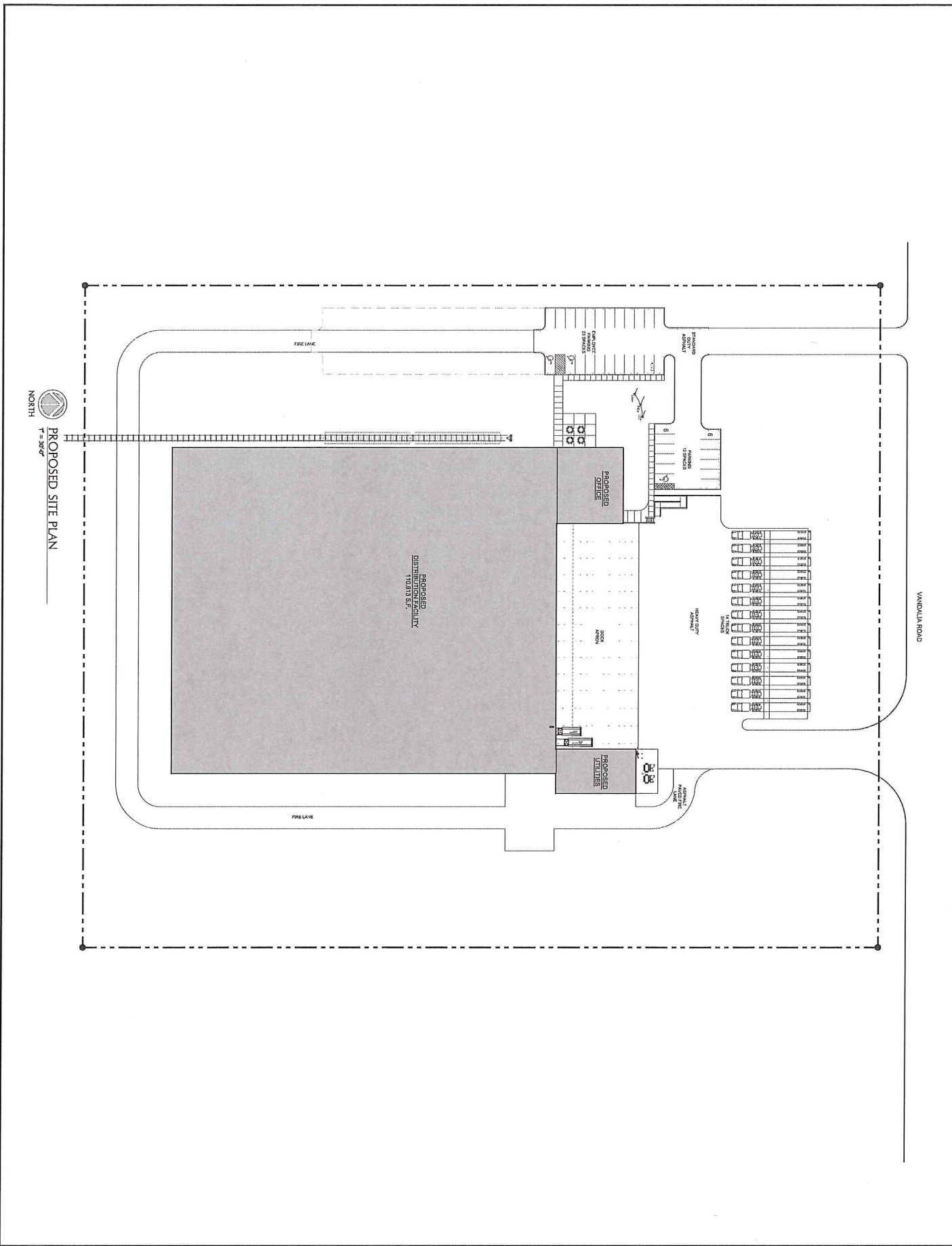
IN WITNESS WHEREOF, I have hereunto set my hand and affixed my seal the day and year first above written.

City Clerk



DES MOINES COLD STORAGE - LOCATION MAP





PROPOSED SITE PLAN
1" = 30'-0"
NORTH

PROPOSED NEW FACILITY FOR
DES MOINES COLD STORAGE
VANDALIA ROAD
DES MOINES, IOWA



DATE	20th MAR
4/25/2018	16-2000-01
OWNER	CDM
PROJECT	ARCHITECTURAL SITE PLAN
SHEET TITLE	ARCHITECTURAL SITE PLAN
REVISIONS	
PRELIMINARY DWG.	
RNAL CONST DWG.	
SHEET NUMBER	A010

LANDSCAPE SUMMARY

VANDALIA FRONTAGE = APPROX. 600 FT

STREET BUFFER LANDSCAPING REQUIRED

OVERSTORY = 12
SHRUBS = 35

STREET BUFFER LANDSCAPING PROVIDED

OVERSTORY = 10
EVERGREEN = 6
ORNAMENTAL = 11
SHRUBS = 20

OPEN SPACE PLANTINGS

REQUIRED

OVERSTORY = 18
EVERGREEN = 18
SHRUBS = 18

PROVIDED

OVERSTORY = 19
EVERGREEN = 17
SHRUBS = 18



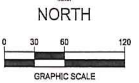
building strong communities.

1360 NW 121st. Street
Clive, Iowa 50325
515-944-1229
fax 515-964-2370

NOTICE:
McClure Engineering Company makes no warranty or representation, express or implied, for conditions which have been taken into account in this plan, specification, and the engineering thereof. The user assumes full responsibility for the design and construction of any work, structure, installation, or equipment which is affected.

COPYRIGHT:
Copyright and property rights in these documents are reserved and owned by McClure Engineering Company. No reproduction, design, or reuse in any manner shall be made without obtaining prior written consent from McClure Engineering Company.

Conceptual Landscape Plan



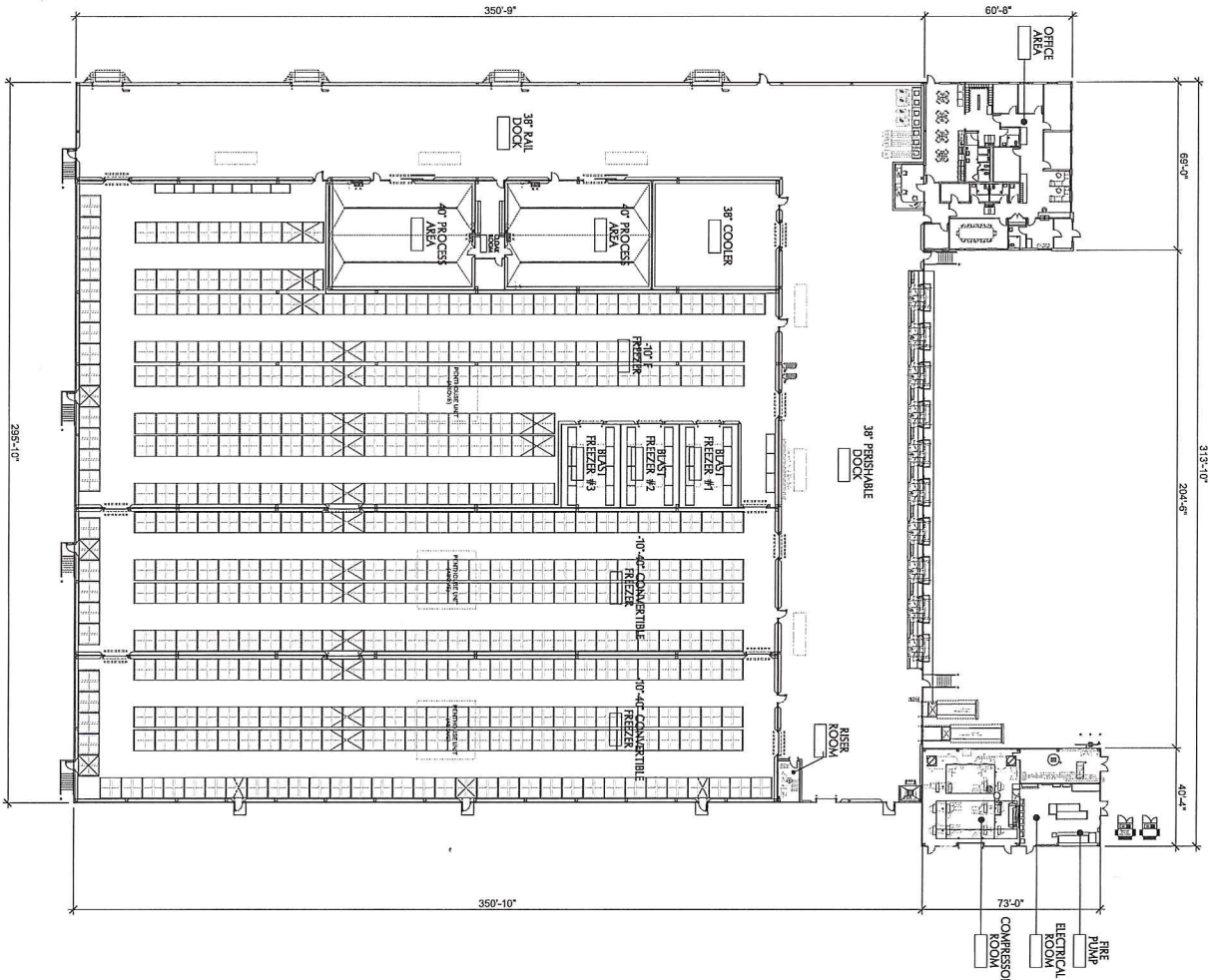
Des Moines Cold Storage Greenfield Site
Des Moines, IA

March 23, 2016

REVISIONS:
APRIL 5, 2016

ENGINEER: C. Smith
DRAWN BY: C. Smith
CHECKED BY: [Signature]
FIELD BOOK NO.

DRAWING NO. LA-01 SHEET NO. 01 / 01



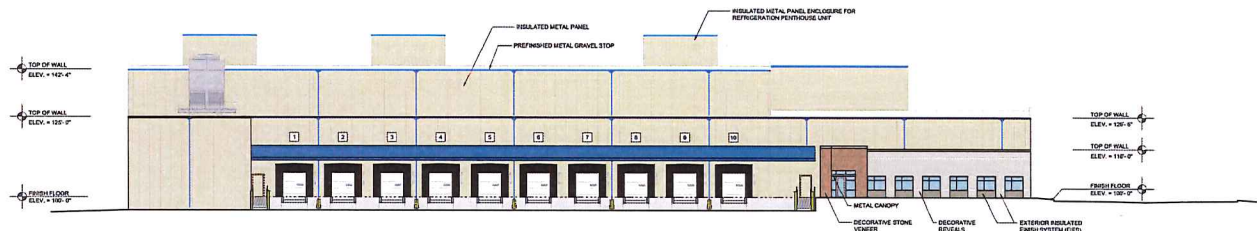
OVERALL FLOOR PLAN
 NORTH
 1" = 30'-0"

DATE	4/25/2018	BY	SK
DATE	8/23/2017	BY	SK
DATE	7/27/17	BY	SK
DATE	7/27/17	BY	SK
DATE	7/27/17	BY	SK
DATE	7/27/17	BY	SK
DATE	7/27/17	BY	SK
DATE	7/27/17	BY	SK
DATE	7/27/17	BY	SK
DATE	7/27/17	BY	SK

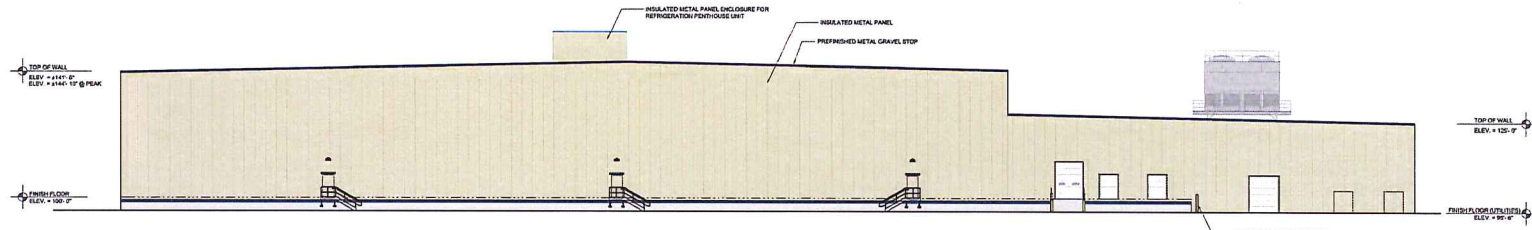
PROPOSED NEW FACILITY FOR
 DES MOINES COLD STORAGE
 VANDALIA ROAD
 DES MOINES, IOWA



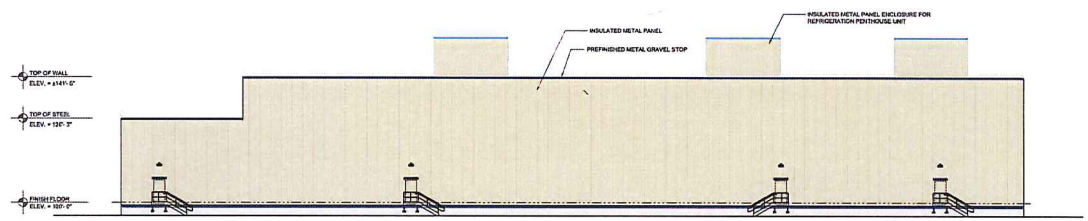
PRELIMINARY NOT FOR CONSTRUCTION



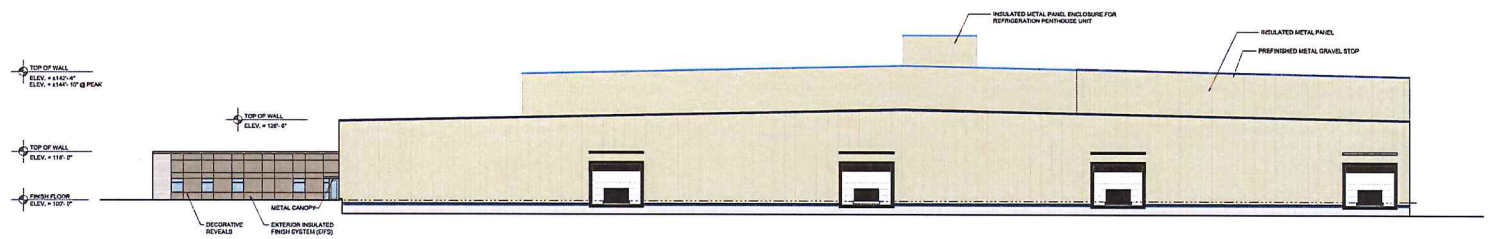
1 EXTERIOR ELEVATION - NORTH
A301 / 1/16" = 1'-0"



2 EXTERIOR ELEVATION - EAST
A301 / 1/16" = 1'-0"



3 EXTERIOR ELEVATION - SOUTH
A301 / 1/16" = 1'-0"



4 EXTERIOR ELEVATION - WEST
A301 / 1/16" = 1'-0"



PROPOSED NEW FACILITY FOR
DES MOINES COLD STORAGE
VANDALIA ROAD
DES MOINES, IOWA

REVISIONS

Δ	1	
Δ	2	
Δ	3	
Δ	4	
Δ	5	
Δ	6	
Δ	7	
Δ	8	
Δ	9	
Δ	10	

DATE	4/2/2016	JOB NO.	16-100-01
DWG. BY	NRS	CHECKED BY	TPC
SHEET TITLE			
EXTERIOR ELEVATIONS			

PRELIMINARY DWGS.	<input type="checkbox"/>
FINAL CONST. DWGS.	<input type="checkbox"/>
SHEET NUMBER	

A301

ARCHITECTURAL

PRELIMINARY NOT FOR CONSTRUCTION

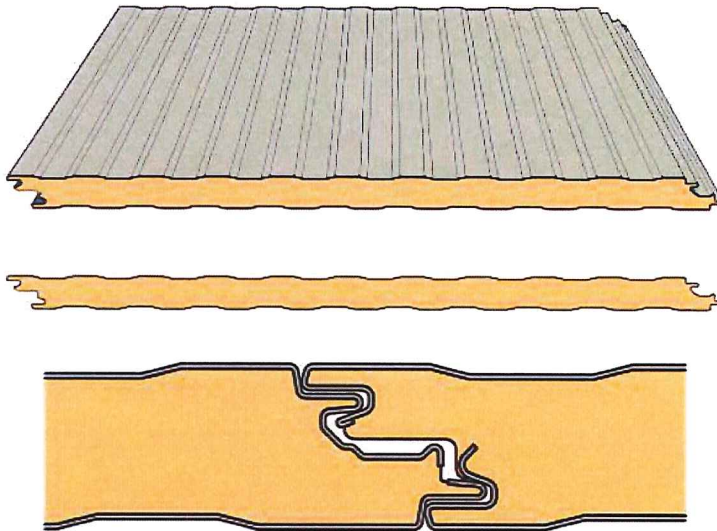
Des Moines Cold



Storage Co., Inc.

Building Materials

Warehouse

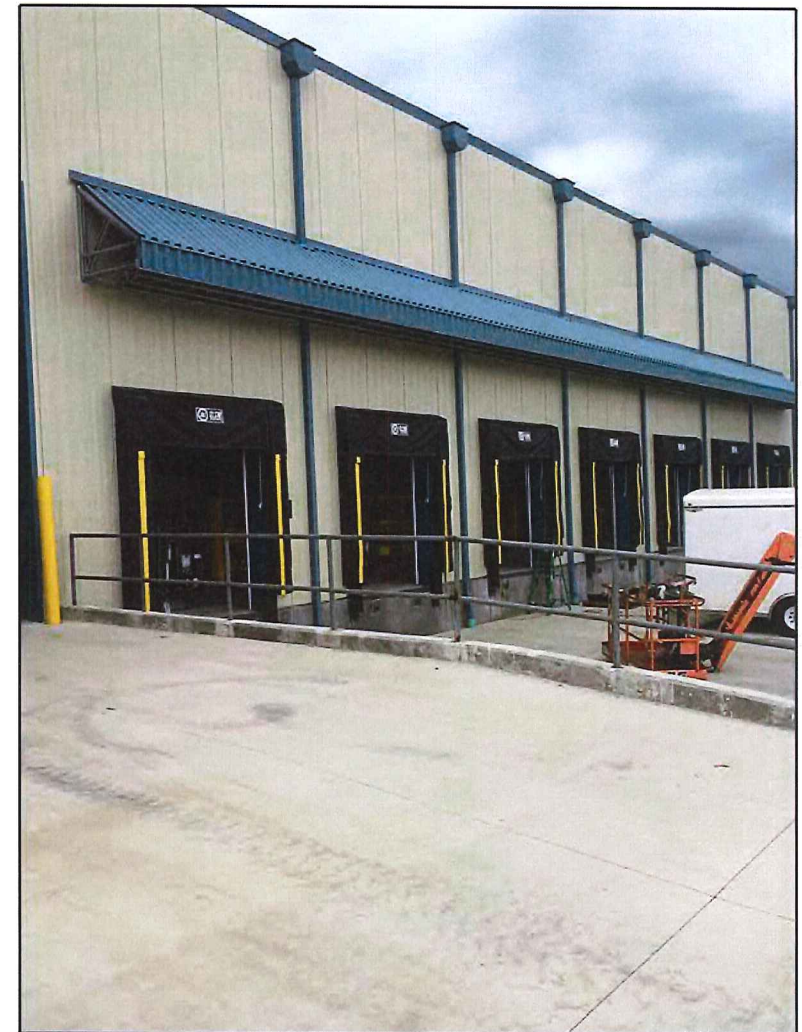


Insulated Metal Wall Panel

Panel Color: Sandstone

Trim Color: Blue

Insulated metal wall panels provide significant R-value which is necessary to maintain sub-zero temperatures within the interior storage spaces.



I.M.P. Building Example

Des Moines Cold

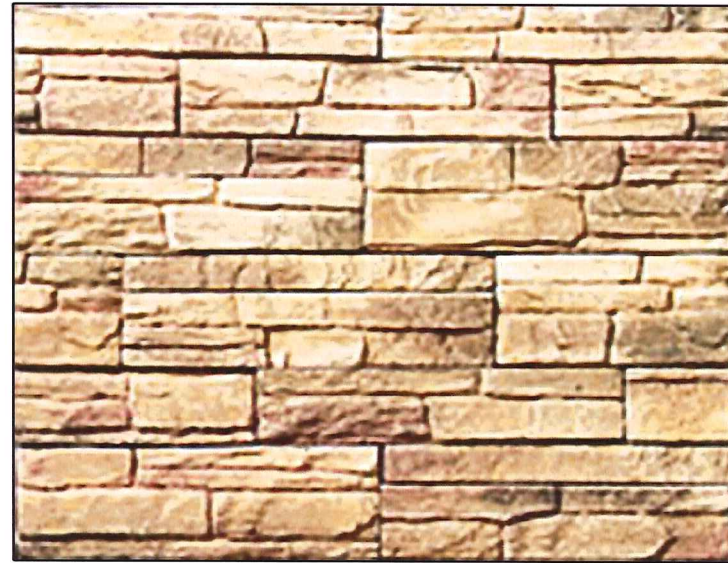


Storage Co., Inc.

Building Materials
Office

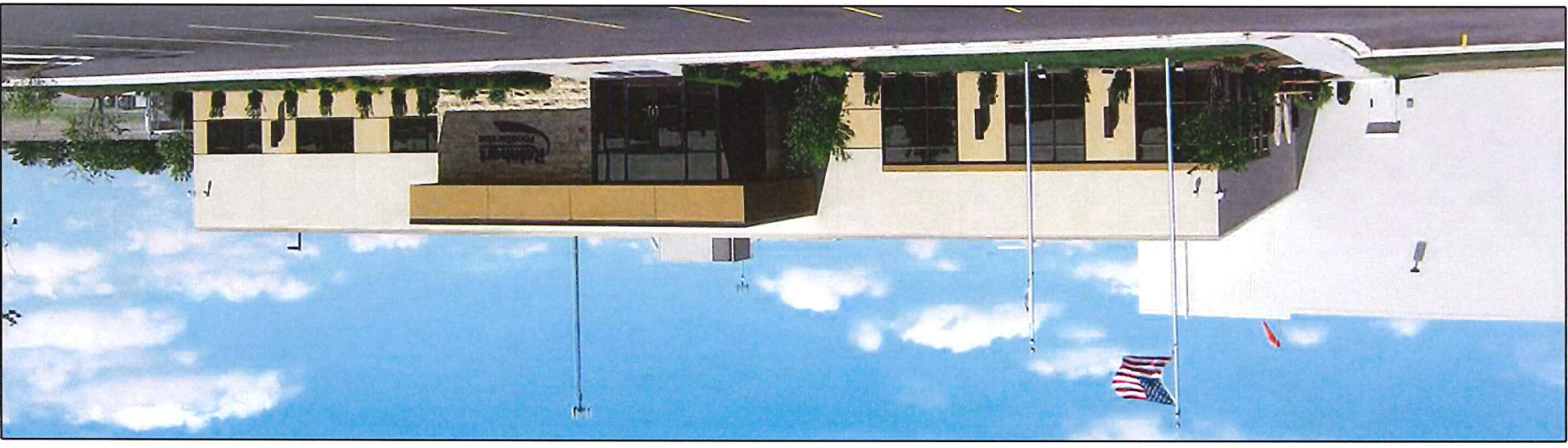


Exterior Insulated Finish System (EIFS)



Decorative Stone Veneer

Building Materials
Examples

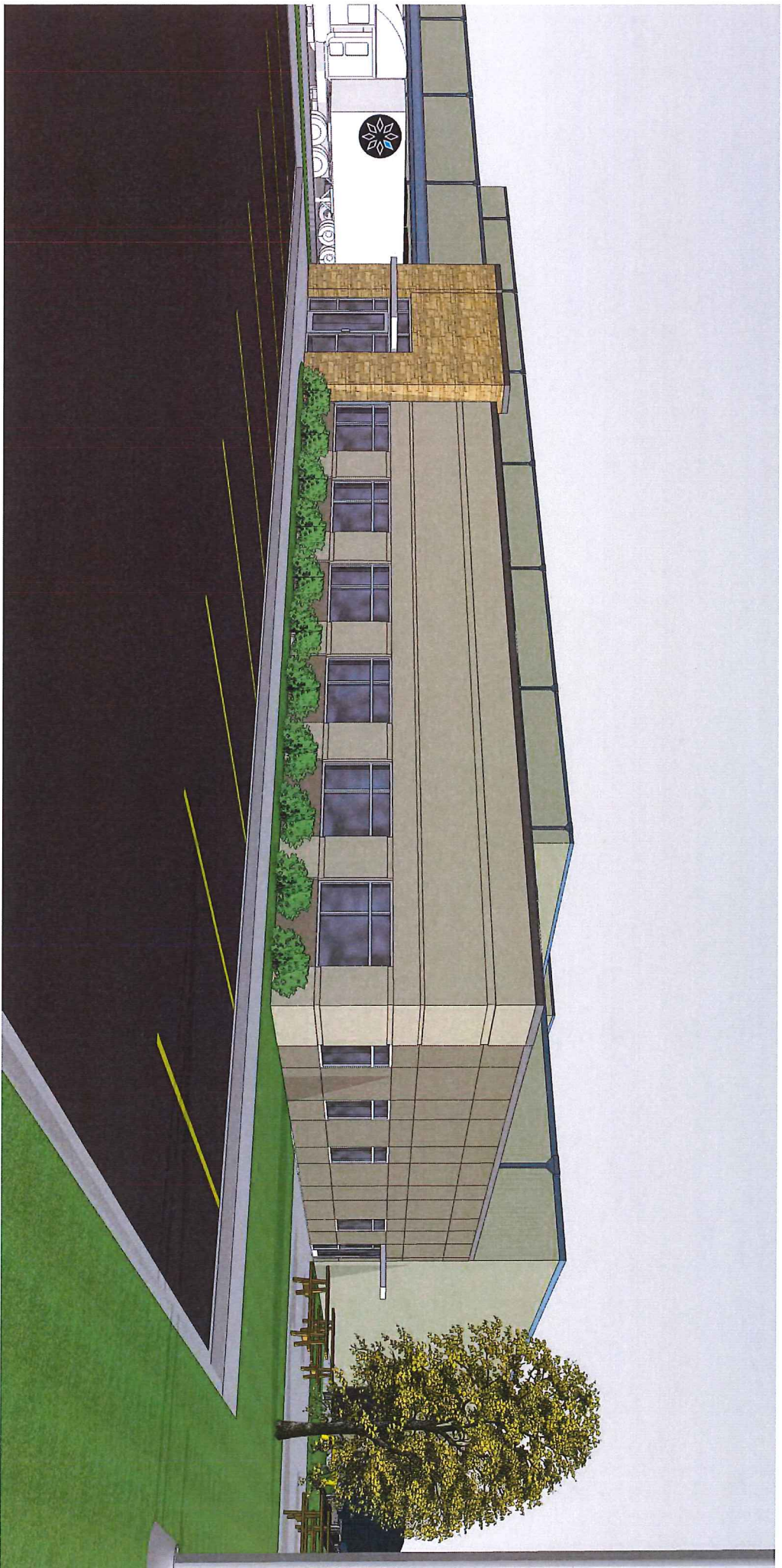


Des Moines Cold



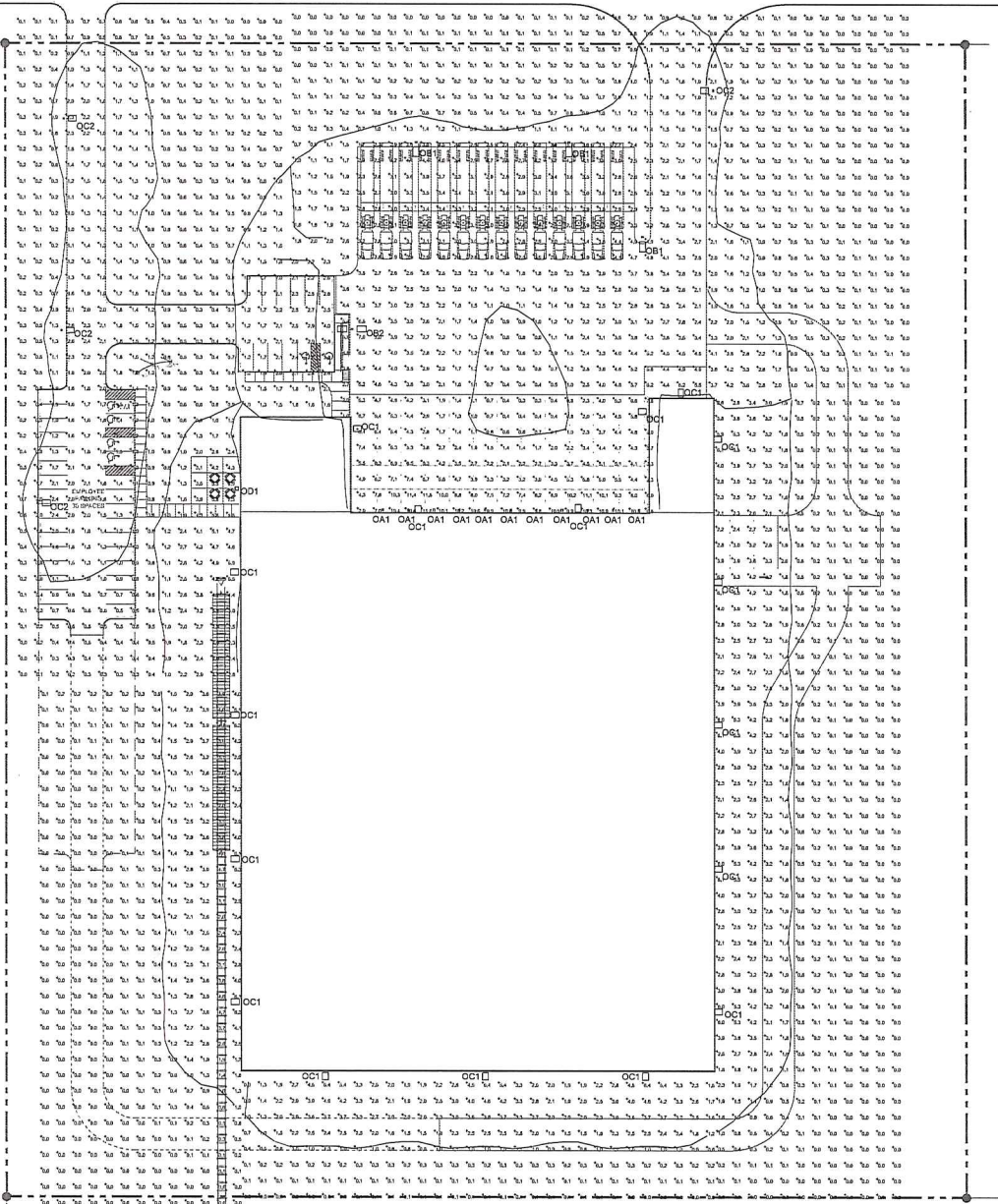
Storage Co., Inc.







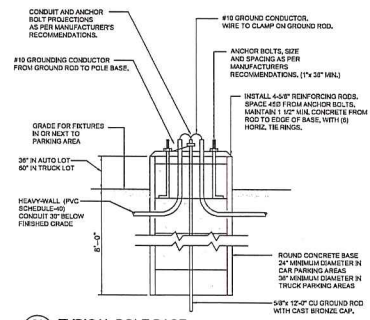




SITE PHOTOMETRIC PLAN
SCALE: 1" = 30'-0"

LIGHTING FIXTURE SCHEDULE									
FIXTURE TYPE	DESCRIPTION	MANUFACTURER	CATALOG NO.	FIXTURE DATA	MOUNTING	VOLTS	QTY	LAMP DATA	REF. NOTES
O01	DOCK CANOPY LIGHT	LITHONIA	17R1LED-4L-FR-077		RECESSED	277	-	LED	
O01	SINGLE HEAD AREA LIGHT	LITHONIA	DSK14-ED45C-100-040-T1A-MANVLS-FHS-D000D		POLE	277	-	LED	1,2,4
O02	DOUBLE HEAD AREA LIGHT	LITHONIA	DSK2014-ED-100-100-040-T1A-MANVLS-FHS-D000D		POLE	277	-	LED	1,2,4
O01	AREA LIGHT	LITHONIA	DSK14-ED45C-100-040-T1A-MANVLS-FHS-D000D		WALL @ 5'	277	-	LED	
O02	SINGLE HEAD AREA LIGHT	LITHONIA	DSK14-ED45C-100-040-T1A-MANVLS-FHS-D000D		POLE	277	-	LED	1,2,4
O01	AREA LIGHT	LITHONIA	DSK14-ED45C-100-040-T1A-MANVLS-FHS-D000D		WALL @ 5'	277	-	LED	

- SCHEDULE REFERENCE NOTES:**
1. PROVIDE 24" DIAMETER CONCRETE BASE, SEE DETAIL ON THIS SHEET.
 2. PROVIDE SINGLE MOUNTING ARM BRACKET.
 3. PROVIDE (2) MOUNTING ARM BRACKETS AT 160 DEGREES.
 4. PROVIDE 30" SQUARE POLE IN COLOR TO MATCH FIXTURE HEADS.



01 TYPICAL POLE BASE
NOT TO SCALE



PROPOSED NEW FACILITY FOR
DES MOINES COLD STORAGE
VANDALLIA ROAD
DES MOINES, IOWA

REVISIONS

▲	
▲	
▲	
▲	
▲	
▲	
▲	
▲	
▲	
▲	
▲	

DATE	JOB NO.
3/24/16	16-035-01
DNV	CHK'D BY
JNF	TJM

SHEET TITLE
SITE LIGHTING PLAN, SCHEDULE AND DETAILS

PRELIMINARY DWGS.

FINAL CONST. DWGS.

SHEET NUMBER

E010

ELECTRICAL

PRELIMINARY NOT FOR CONSTRUCTION



FEATURES & SPECIFICATIONS

INTENDED USE — General illumination for rough service (vandal-resistant) applications. Ideal for interior or exterior applications where safety and security are a concern such as retail, under canopies, gas stations and bank drive thru's. **Certain airborne contaminants can diminish integrity of acrylic.** [Click here for Acrylic Environmental Compatibility table for suitable uses.](#)

CONSTRUCTION — Housing: 16-gauge cold-rolled steel.

Door: 16-gauge cold-rolled steel door, secured by either stainless steel tamper-resistant Torx® T-20 or standard stainless steel slotted hex-head screws (four of each included).

Finish: Post-painted after fabrication in white polyester powder coat for high reflectance, durability and corrosion resistance.

OPTICS — Multiple lens options available. Choose from .125" polycarbonate, white or clear, or flat and drop dish glass lenses. For maximum lumens use the less lens option.

ELECTRICAL — Light engine(s) consist of 10 high-efficacy LEDs mounted to a metal core circuit board and integral aluminum heat sinks to maximize heat dissipation and promote long life (50,000 hrs at 25°C, L70). Class 2 electronic driver has a power factor >90%, THD <20%. 0 to 10V dimming standard. Easily-serviceable surge protection device meets a minimum Category B (per ANSI/IEEE C62.41.2).

INSTALLATION — Separate yoke mounting frame provided with adjustable brackets for use with C-channel bar hangers, which are not included.

LISTINGS — CSA certified to UL and C-UL standards. Luminaire is rated for wet locations in covered-ceiling applications and IP65 rated for glass lens and less lens options only. Rated for 25°C ambient temperatures.

WARRANTY — 5-year limited warranty. Complete warranty terms located at www.acuitybrands.com/CustomerResources/Terms_and_conditions.aspx

For installed Rough Service Product(s), Acuity warrants that, for the lifetime of the product(s), the polycarbonate lens and/or polycarbonate housing will withstand breakage resulting from occasional physical abuse and rough handling (the "Rough Service Warranty"), notwithstanding the vandalism exclusion set forth at www.acuitybrands.com/CustomerResources/Terms_and_Conditions.aspx

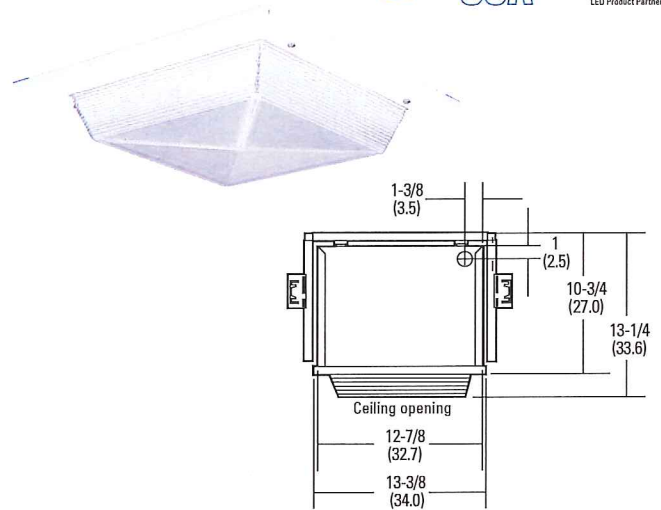
Actual performance may differ as a result of end-user environment and application.

Note: Specifications subject to change without notice.

Catalog Number	
Notes	Des Moines Cold Storage
Type	OA1

Rough Service LED Recessed Fixture

VRR LED



All dimensions are shown in inches (centimeters) unless otherwise noted.

ORDERING INFORMATION

Lead times will vary depending on options selected. Consult with your sales representative.

Example: VRR LED 3L CP 120

VRR LED Series	Lumens/Color temperature ¹	Lens	Voltage ³	Options
VRR LED	1L 1500 lumens (blank) 4000K, 70 CRI	CPP Clear prismatic polycarbonate	120 120V	ALDF Aluminum door frame
	3L 3000 lumens 50 5000K, 70 CRI	WPP White prismatic polycarbonate	277 277V	BSL722 Bodine® emergency LED battery pack for 0°C and up ⁴
	4L 4000 lumens	DHL Drop Holophane® glass ²		BSL722C Bodine® emergency LED battery pack for -20°C and up ⁴
		FHL Flat Holophane® glass ²		DIM Pre-wired for 0-10V low voltage dimming (100%- 10%)
		L/LENS Less lens		L/SP Less surge protector
				SF Single fuse ³

Accessories: Order as separate catalog number.	
RK1 T20BIT	Hex-base driver bit, Torx T20, for tamper-resistant screws with center reject pin.
RK1 T20DRV	Torx T20 screwdriver for use with tamper-resistant screws with center reject pin.
PF	Plaster frame; provides a clean edge for ceiling openings.
VRRGA	2' X 2' NEMA G grid adapter, textured white

Notes

- The CCT value provided is of lamp source and actual CCT will vary upon levels.
- Glass lenses must also order ALDF option.
- Must specify voltage.
- Available with 1L an 3L only.



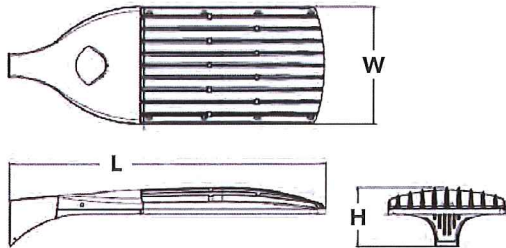
D-Series Size 2 LED Area Luminaire

d^{series}



Specifications

EPA:	1.1 ft ² (0.10 m ²)
Length:	40" (101.6 cm)
Width:	15" (38.1 cm)
Height:	7-1/4" (18.4 cm)
Weight (max):	36 lbs (16.3 kg)



Catalog Number	
Notes	Des Moines Cold Storage
Type	OD1

Hit the Tab key or mouse over the page to see all interactive elements.

Introduction

The modern styling of the D-Series is striking yet unobtrusive - making a bold, progressive statement even as it blends seamlessly with its environment.

The D-Series distills the benefits of the latest in LED technology into a high performance, high efficacy, long-life luminaire. The outstanding photometric performance results in sites with excellent uniformity, greater pole spacing and lower power density. The Size 2 is ideal for replacing 400-1000W metal halide in area lighting applications with energy savings of up to 80% and expected service life of over 100,000 hours.

Ordering Information

EXAMPLE: DSX2 LED 80C 1000 40K T4M MVOLT SPA DDBXD

Series	LEDs	Drive current	Color temperature	Distribution	Voltage	Mounting
DSX2 LED	Forward optics	530 530 mA	30K 3000 K	T1S Type I Short	MVOLT ³	Shipped included
	80C 80 LEDs (four engine)	700 700 mA	40K 4000 K	T2S Type II Short	120 ³	SPA Square pole mounting
	100C 100 LEDs (four engines)	1000 1000 mA (1 A)	50K 5000 K	T2M Type II Medium	208 ³	RPA Round pole mounting
	Rotated optics¹	1200 1200 mA ² (1.2 A)	AMBPC Amber phosphor converted	T3S Type III Short	240 ³	WBA Wall bracket
	90C 90 LEDs			T3M Type III Medium	277 ³	SPUMBA Square pole universal mounting adaptor ⁵
			T4M Type IV Medium	LCCO Left corner cutoff ²	347 ⁴	RPUMBA Round pole universal mounting adaptor ⁵
			TFTM Forward Throw Medium	RCCO Right corner cutoff ²	480 ⁴	Shipped separately
						KMA8 DDBXD U Mast arm mounting bracket adaptor (specify finish) ⁶

Control options	Other options	Finish (required)
Shipped installed	Shipped installed	DDBXD Dark bronze
PER NEMA twist-lock receptacle only (no controls) ⁷	HS House-side shield ¹⁷	DBLXD Black
PERS Five-wire receptacle only (no controls) ^{7,8}	SF Single fuse (120, 277, 347V) ³	DNAXD Natural aluminum
PER7 Seven-wire receptacle only (no controls) ^{7,8}	DF Double fuse (208, 240, 480V) ³	DWHXD White
DMG 0-10V dimming driver (no controls) ⁹	L90 Left rotated optics ¹⁸	DDBTXD Textured dark bronze
DCR Dimmable and controllable via ROAM [®] (no controls) ¹⁰	R90 Right rotated optics ¹⁸	DBLXD Textured black
DS Dual switching ^{11,12}		DNATXD Textured natural aluminum
PIRH Motion sensor, 15-30' mounting height ¹³		DWHGXD Textured white
BL30 Bi-level switched dimming, 30% ^{12,14}		
BL50 Bi-level switched dimming, 50% ^{12,14}		
PNMTDD3 Part night, dim till dawn ¹⁵		
PNMTSD3 Part night, dim 5 hrs ¹⁵		
PNMT6D3 Part night, dim 6 hrs ¹⁵		
PNMT7D3 Part night, dim 7 hrs ¹⁵		
FAO Field Adjustable Output ¹⁶		

Drilling

Template #8 Top of Pole

DSX2 shares a unique drilling pattern with the AERIS™ family. Specify this drilling pattern when specifying poles, per the table below.

DM19AS Single unit	DM29AS 2 at 90° *
DM28AS 2 at 180°	DM39AS 3 at 90° *
DM49AS 4 at 90° *	DM32AS 3 at 120° **

Example: SSA 20 4C DM19AS DDBXD

Controls & Shields

Accessories Ordered and shipped separately.

DLL127F 1.5 JU	Photocell - SSL twist-lock (120-277V) ¹⁹
DLL1347F 1.5 CUL JU	Photocell - SSL twist-lock (347V) ¹⁹
DLL1480F 1.5 CUL JU	Photocell - SSL twist-lock (480V) ¹⁹
SC U	Shorting cap ¹⁹
DSX2HS 80C U	House-side shield for 80 LED unit
DSX2HS 90C U	House-side shield for 90 LED unit
DSX2HS 100C U	House-side shield for 100 LED unit
PUMBA DDBXD U*	Square and round pole universal mounting bracket (specify finish)
KMA8 DDBXD U	Mast arm mounting bracket adaptor (specify finish) ⁶

For more control options, visit [DTL](#) and [ROAM](#) online.

Tenon Mounting Slipfitter **

Tenon O.D.	Single Unit	2 at 180°	2 at 90°	3 at 120°	3 at 90°	4 at 90°
2-3/8"	AST20-190	AST20-280	AST20-290	AST20-320	AST20-390	AST20-490
2-7/8"	AST25-190	AST25-280	AST25-290	AST25-320	AST25-390	AST25-490
4"	AST35-190	AST35-280	AST35-290	AST35-320	AST35-390	AST35-490

- ### NOTES
- Rotated optics option (L90 or R90) required for 90C.
 - Not available in AMBPC.
 - MVOLT driver operates on any line voltage from 120-277V (50/60 Hz). Single fuse (SF) requires 120V, 277V or 347V. Double fuse (DF) requires 208V, 240V or 480V.
 - Not available with BL30, BL50 or PNMT options.
 - Available as a separate combination accessory: PUMBA (finish) U; 1.5 G vibration load rating per ANSI C136.31.
 - Must be ordered as a separate accessory; see Accessories information. For use with 2-3/8" mast arm (not included).
 - Photocell ordered and shipped as a separate line item from Acuity Brands Controls. See accessories. Not available with DS option.
 - If ROAM[®] node required, it must be ordered and shipped as a separate line item from Acuity Brands Controls. Not available with DCR.
 - DMG option for 347V or 480V requires 1000mA.
 - Specifies a ROAM[®] enabled luminaire with 0-10V dimming capability; PER option required. Additional hardware and services required for ROAM[®] deployment; must be purchased separately. Call 1-800-442-6745 or email: sales@roamservices.net. N/A with DS, PIRH, PER5, PER7, BL30, BL50 or PNMT options.
 - Provides 50/50 luminaire operation via two independent drivers on two separate circuits. N/A with 80C 530, 90C 530, PER, PER5, PER7, DCR, BL30, BL50 or PNMT options.
 - Requires an additional switched circuit.
 - Specifies the SensorSwitch SBGR-6-ODP control; see [Motion Sensor Guide](#) for details. Dimming driver standard. Not available with DS, PER5 or PER7.
 - Dimming driver standard. MVOLT only. Not available with 347V, 480V, DCR, DS, PER5, PER7 or PNMT options.
 - Dimming driver standard. MVOLT only. Not available with 347V, 480V, DCR, DS, PER5, PER7, BL30 or BL50.
 - Dimming driver standard. Not available with PER5, PER7, DMG, DCR, DS, BL30, BL50 or PNMT options.
 - Also available as a separate accessory; see Accessories information.
 - Available with 90 LEDs (90C option) only.
 - Requires luminaire to be specified with PER option. Ordered and shipped as a separate line item from Acuity Brands Controls.





D-Series Size 1 LED Area Luminaire

d^{series}



Catalog Number	
Notes	Des Moines Cold Storage
Type	OD1

Hit the Tab key or mouse over the page to see all interactive elements.

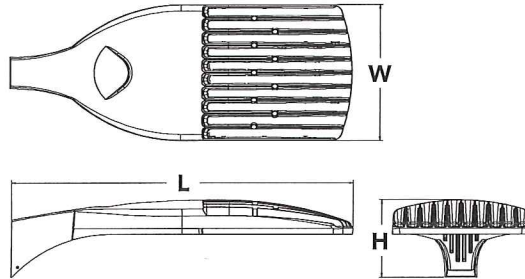
Introduction

The modern styling of the D-Series is striking yet unobtrusive - making a bold, progressive statement even as it blends seamlessly with its environment.

The D-Series distills the benefits of the latest in LED technology into a high performance, high efficacy, long-life luminaire. The outstanding photometric performance results in sites with excellent uniformity, greater pole spacing and lower power density. It is ideal for replacing 100 – 400W metal halide in pedestrian and area lighting applications with typical energy savings of 65% and expected service life of over 100,000 hours.

Specifications

EPA:	1.01 ft ² (0.09 m ²)
Length:	33" (83.8 cm)
Width:	13" (33.0 cm)
Height:	7-1/2" (19.0 cm)
Weight (max):	27 lbs (12.2 kg)



Ordering Information

EXAMPLE: DSX1 LED 60C 1000 40K T3M MVOLT SPA DDBXD

Series	LEDs	Drive current	Color temperature	Distribution	Voltage	Mounting
DSX1 LED	Forward optics 30C 30 LEDs (one engine) 40C 40 LEDs (two engines) 60C 60 LEDs (two engines) Rotated optics¹ 60C 60 LEDs (two engines)	530 530 mA 700 700 mA 1000 1000 mA (1 A)	30K 3000 K 40K 4000 K 50K 5000 K AMBPC Amber phosphor converted ²	T1S Type I Short T2S Type II Short T2M Type II Medium T3S Type III Short T3M Type III Medium T4M Type IV Medium TFTM Forward Throw Medium T5VS Type V Very Short T5S Type V Short T5M Type V Medium T5W Type V Wide BLC Backlight control ² LCCO Left corner cutoff ² RCCO Right corner cutoff ²	MVOLT ³ 120 ³ 208 ³ 240 ³ 277 ³ 347 ⁴ 480 ⁴	Shipped included SPA Square pole mounting RPA Round pole mounting WBA Wall bracket SPUMBA Square pole universal mounting adaptor ⁵ RPUMBA Round pole universal mounting adaptor ⁵ Shipped separately KMA8 DDBXD U Mast arm mounting bracket adaptor (specify finish) ⁶

Control options	Other options	Finish (required)
Shipped installed PER NEMA twist-lock receptacle only (no controls) ⁷ PER5 Five-wire receptacle only (no controls) ^{7,8} PER7 Seven-wire receptacle only (no controls) ^{7,8} DMG 0-10V dimming driver (no controls) ⁹ DCR Dimmable and controllable via ROAM [®] (no controls) ¹⁰ DS Dual switching ^{11,12} PIR Motion/ambient sensor, 8-15' mounting height, ambient sensor enabled at 5fc ¹³ PIRH Motion/ambient sensor, 15-30' mounting height, ambient sensor enabled at 5fc ¹³	PIR1FC3V Motion/ambient sensor, 8-15' mounting height, ambient sensor enabled at 1fc ¹³ PIRH1FC3V Motion/ambient sensor, 15-30' mounting height, ambient sensor enabled at 1fc ¹³ BL30 Bi-level switched dimming, 30% ^{12,14} BL50 Bi-level switched dimming, 50% ^{12,14} PNMTDD3 Part night, dim till dawn ¹⁵ PNMT5D3 Part night, dim 5 hrs ¹⁵ PNMT6D3 Part night, dim 6 hrs ¹⁵ PNMT7D3 Part night, dim 7 hrs ¹⁵ HS House-side shield ¹⁶ WTB Utility terminal block ¹⁷ SF Single fuse (120, 277, 347V) ¹⁸ DF Double fuse (208, 240, 480V) ¹⁸ L90 Left rotated optics ¹⁹ R90 Right rotated optics ¹⁹	DDBXD Dark bronze DBLXD Black DNAXD Natural aluminum DWHXD White DDBTXD Textured dark bronze DBLBXD Textured black DNATXD Textured natural aluminum DWHGXD Textured white

Accessories	
Ordered and shipped separately.	
DLL127F 1.5 JU	Photocell - SSL twist-lock (120-277V) ²⁰
DLL347F 1.5 CUL JU	Photocell - SSL twist-lock (347V) ²⁰
DLL480F 1.5 CUL JU	Photocell - SSL twist-lock (480V) ²⁰
SCU	Shorting cap ²⁰
DSX1HS 30C U	House-side shield for 30 LED unit
DSX1HS 40C U	House-side shield for 40 LED unit
DSX1HS 60C U	House-side shield for 60 LED unit
PUMBA DDBXD U*	Square and round pole universal mounting bracket (specify finish)
KMA8 DDBXD U	Mast arm mounting bracket adaptor (specify finish) ⁴

For more control options, visit [DTL](#) and [ROAM](#) online.

- NOTES**
- Rotated optics available with 60C only.
 - AMBPC not available with 530mA, 700mA, BLC, LCCO or RCCO.
 - MVOLT driver operates on any line voltage from 120-277V (50/60 Hz). Specify 120V, 208V, 240V or 277V options only when ordering with fusing (SF, DF options).
 - Not available with single board, 530mA product (30C 530 or 60C 530 DS). Not available with BL30, BL50 or PNMT options.
 - Available as a separate combination accessory: PUMBA (finish) U; 1.5 G vibration load rating per ANCI C136.51.
 - Must be ordered as a separate accessory; see Accessories information. For use with 2-3/8" mast arm (not included).
 - Photocell ordered and shipped as a separate line item from Acuity Brands Controls. See accessories. Not available with DS option.
 - If ROAM[®] node required, it must be ordered and shipped as a separate line item from Acuity Brands Controls. Not available with DCR.
 - DMG option for 347V or 480V requires 1000mA.
 - Specifies a ROAM[®] enabled luminaire with 0-10V dimming capability; PER option required. Additional hardware and services required for ROAM[®] deployment; must be purchased separately. Call 1-800-442-6745 or email: sales@roamservices.net. N/A with PIR options DS, PER5, PER7, BL30, BL50 or PNMT options.

- Requires 40C or 60C. Provides 50/50 luminaire operation via two independent drivers on two separate circuits. N/A with PER, DCR, WTB, PIR or PIRH.
- Requires an additional switched circuit.
- PIR and PIR1FC3V specify the [SensorSwitch SBGR-10-ODP](#) control; PIRH and PIRH1FC3V specify the [SensorSwitch SBGR-6-ODP](#) control; see [Motion Sensor Guide](#) for details. Dimming driver standard. Not available with PER5 or PER7. Ambient sensor disabled when ordered with DCR. Separate on/off required.
- Dimming driver standard. MVOLT only. Not available with 347V, 480V, DCR, DS, PER5, PER7 or PNMT options.
- Dimming driver standard. MVOLT only. Not available with 347V, 480V, DCR, DS, PER5, PER7, BL30 or BL50.
- Also available as a separate accessory; see Accessories information.
- WTB not available with DS.
- Single fuse (SF) requires 120V, 277V or 347V. Double fuse (DF) requires 208V, 240V or 480V.
- Available with 60 LEDs (60C option) only.
- Requires luminaire to be specified with PER option. Ordered and shipped as a separate line item from Acuity Brands Controls.





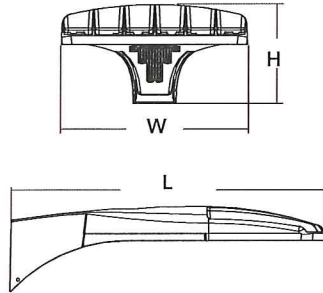
D-Series Size 0 LED Area Luminaire



d"series

Specifications

EPA:	0.95 ft ² (.09 m ²)
Length:	26" (66.0 cm)
Width:	13" (33.0 cm)
Height:	7" (17.8 cm)
Weight (max):	16 lbs (7.25 kg)



Catalog Number	
Notes	Des Moines Cold Storage
Type	OD1

Hit the Tab key or mouse over the page to see all interactive elements.

Introduction

The modern styling of the D-Series is striking yet unobtrusive - making a bold, progressive statement even as it blends seamlessly with its environment.

The D-Series distills the benefits of the latest in LED technology into a high performance, high efficacy, long-life luminaire. The outstanding photometric performance results in sites with excellent uniformity, greater pole spacing and lower power density. It is ideal for replacing up to 400W metal halide with typical energy savings of 65% and expected service life of over 100,000 hours.

Ordering Information

EXAMPLE: DSX0 LED 40C 1000 40K T3M MVOLT SPA DDBXD

Series	LEDs	Drive current	Color temperature	Distribution	Voltage	Mounting
DSX0 LED	Forward optics	530 530 mA	30K 3000 K	T1S Type I short	T5S Type V short	MVOLT ⁴
	20C 20 LEDs (one engine)	700 700 mA	40K 4000 K	T2S Type II short	T5M Type V medium	120 ⁴
	40C 40 LEDs (two engines)	1000 1000 mA (1 A) ²	50K 5000 K	T2M Type II medium	T5W Type V wide	208 ⁴
	Rotated optics¹		AMBPC Amber phosphor converted ³	T3S Type III short	BLC Backlight control ²	240 ⁴
	30C 30 LEDs (one engine)			T3M Type III medium	LCCO Left corner cutoff ²	277 ⁴
				T4M Type IV medium	RCCO Right corner cutoff ²	347 ⁵
				TFTM Forward throw medium		480 ⁵
				T5VS Type V very short		

Control options	Other options	Finish (required)
<p>Shipped installed</p> <p>PER NEMA twist-lock receptacle only (no controls)⁸</p> <p>PER5 Five-wire receptacle only (no controls)^{8,9}</p> <p>PER7 Seven-wire receptacle only (no controls)^{8,9}</p> <p>DMG 0-10V dimming driver (no controls)¹⁰</p> <p>DCR Dimmable and controllable via ROAM[®] (no controls)¹¹</p> <p>PIR Motion/ambient sensor, 8-15' mounting height, ambient sensor enabled at 5fc¹²</p> <p>PIRH Motion/ambient sensor, 15-30' mounting height, ambient sensor enabled at 5fc¹²</p>	<p>PIR1FC3V Motion/ambient sensor, 8-15' mounting height, ambient sensor enabled at 1fc¹²</p> <p>PIRH1FC3V Motion/ambient sensor, 15-30' mounting height, ambient sensor enabled at 1fc¹²</p> <p>BL30 Bi-level switched dimming, 30%^{13,14}</p> <p>BL50 Bi-level switched dimming, 50%^{13,14}</p> <p>PNMTDD3 Part night, dim till dawn¹⁵</p> <p>PNMT5D3 Part night, dim 5 hrs¹⁵</p> <p>PNMT6D3 Part night, dim 6 hrs¹⁵</p> <p>PNMT7D3 Part night, dim 7 hrs¹⁵</p>	<p>Shipped installed</p> <p>HS House-side shield¹⁶</p> <p>SF Single fuse (120, 277, 347V)¹⁷</p> <p>DF Double fuse (208, 240, 480V)¹⁷</p> <p>L90 Left rotated optics¹</p> <p>R90 Right rotated optics¹</p> <p>DDL Diffused drop lens¹⁶</p>
		<p>DDBXD Dark bronze</p> <p>DBLXD Black</p> <p>DNAXD Natural aluminum</p> <p>DWHXD White</p> <p>DDBTXD Textured dark bronze</p> <p>DBLXD Textured black</p> <p>DNATXD Textured natural aluminum</p> <p>DWHGXD Textured white</p>

Accessories
Ordered and shipped separately.

DLL127F 1.5 JU	Photocell - SSL twist-lock (120-277V) ¹⁸
DLL347F 1.5 CUL JU	Photocell - SSL twist-lock (347V) ¹⁸
DLL480F 1.5 CUL JU	Photocell - SSL twist-lock (480V) ¹⁸
SC U	Shorting cap ¹⁸
DSX0HS 20C U	House-side shield for 20 LED unit ¹⁶
DSX0HS 30C U	House-side shield for 30 LED unit ¹⁶
DSX0HS 40C U	House-side shield for 40 LED unit ¹⁶
DSX0DDL U	Diffused drop lens (polycarbonate) ¹⁶
PUMBA DDBXD U*	Square and round pole universal mounting bracket adaptor (specify finish)
KMA8 DDBXD U	Mast arm mounting bracket adaptor (specify finish) ⁷

For more control options, visit [DTL](#) and [ROAM](#) online.

NOTES

- 30 LEDs (30C option) and rotated options (L90 or R90) only available together.
- Not available with AMBPC.
- AMBPC only available with 530mA or 700mA.
- MVOLT driver operates on any line voltage from 120-277V (50/60 Hz). Specify 120V, 208V, 240V or 277V options only when ordering with fusing (SF, DF options).
- Not available with single board, 530mA product (20C 530 or 30C 530). Not available with BL30, BL50 or PNMT options.
- Available as a separate combination accessory: PUMBA (finish) U; 1.5 G vibration load rating per ANCI C136.31.
- Must be ordered as a separate accessory; see Accessories information. For use with 2-3/8" mast arm (not included).
- Photocell ordered and shipped as a separate line item from Acuity Brands Controls. See accessories.
- If ROAM[®] node required, it must be ordered and shipped as a separate line item from Acuity Brands Controls. Not available with DCR.
- DMG option for 347V or 480V requires 1000mA.

- Specifies a ROAM[®] enabled luminaire with 0-10V dimming capability; PER option required. Additional hardware and services required for ROAM[®] deployment; must be purchased separately. Call 1-800-442-6745 or email: sales@roamservices.net. N/A with PIR options PER5, PER7, BL30, BL50 or PNMT options.
- PIR and PIR1FC3V specify the [SensorSwitch SBGR-10-ODP](#) control; PIRH and PIRH1FC3V specify the [SensorSwitch SBGR-6-ODP](#) control; see [Motion Sensor Guide](#) for details. Dimming driver standard. Not available with PER5 or PER7. Ambient sensor disabled when ordered with DCR. Separate on/off required.
- Requires an additional switched circuit.
- Dimming driver standard. MVOLT only. Not available with 347V, 480V, DCR, PER5, PER7 or PNMT options.
- Dimming driver standard. MVOLT only. Not available with 347V, 480V, DCR, PER5, PER7, BL30 or BL50.
- Also available as a separate accessory; see Accessories information.
- Single fuse (SF) requires 120V, 277V or 347V. Double fuse (DF) requires 208V, 240V or 480V.
- Requires luminaire to be specified with PER option. Ordered and shipped as a separate line item from Acuity Brands Controls.

