



Date June 27, 2016

RESOLUTION HOLDING HEARING ON REQUEST FROM DES MOINES COLD STORAGE COMPANY, INC. FOR REVIEW AND APPROVAL OF A SECOND AMENDMENT TO THE VISION FUELS PUD CONCEPTUAL PLAN ON PROPERTY LOCATED IN THE VICINITY OF 3805 VANDALIA ROAD

WHEREAS, on June 13, 2016, by Roll Call No. 16-0955, the City Council received and filed a communication from the City Plan and Zoning Commission advising that at a public hearing held on May 19, 2016, its members voted 10-0 in support of a motion to recommend **APPROVAL** of a request from Des Moines Cold Storage Company, Inc. (developer), represented by C.J. Morton (officer), for review and approval of a Second Amendment to the Vision Fuels PUD Conceptual Plan on property located in the vicinity of 3805 Vandalia Road, to allow development of an approximately 43.17-acre portion of the property for refrigerated warehousing and distribution with an initial phase of an approximately 111,000-square foot office/refrigerated storage/distribution facility that could be expanded with additional phases of 244,000 square feet and 400,000 square feet, respectively, subject to the following revisions to the Plan:

1. Revise the storm water statement to indicate that conveyance of storm water from the site to an off-site regional detention facility shall be provided either structurally or overland as approved by a final Development Plan.
2. Add a note that any site development is subject to compliance with the City Floodplain Development Regulations.
3. Add a note that a traffic study analysis of proposed driveways is required as part of any Development Plan reviewed as prescribed by the City Traffic Engineer.
4. Add a note that any subsequent phases of the Plan shall necessitate a future PUD Conceptual Plan amendment review (either administrative or formal).
5. Revise the landscaping requirements to indicate that landscaping will be required as applicable in "C-2" Districts.
6. Show conceptual landscaping throughout all projected phases of the plan in the same line weight.
7. Add a note regarding the requirement for perimeter screening berms for loading dock areas which directly face public street views.
8. Add a note that any fencing would be in accordance with standards applicable to "M-1" Districts. Any outdoor storage would be in accordance with standards in the "M-1" District.
9. Additional landscaping including evergreen species should be planted on the berm near Vandalia Road to screen views of rooftop mechanical equipment; and

WHEREAS, on June 13, 2016, by Roll Call No. 16-0955, it was duly resolved by the City Council that the application of Des Moines Cold Storage Company, Inc. for review and approval of the proposed Second Amendment to the Vision Fuels PUD Conceptual Plan for the Property, as legally described below, be set down for hearing on June 27, 2016, at 5:00 p.m. in the City Council Chambers at the Municipal Services Center; and

WHEREAS, due notice of said hearing was published in the Des Moines Register, as provided by law, setting forth the time and place for hearing on said proposed amendment to the approved Vision Fuels PUD Conceptual Plan; and

WHEREAS, in accordance with said notice, those interested in said proposed amendment to the approved Vision Fuels PUD Conceptual Plan, both for and against, have been given opportunity to be heard with respect thereto and have presented their views to the City Council.



Date June 27, 2016

NOW THEREFORE, BE IT RESOLVED, by the City Council of the City of Des Moines, Iowa, as follows:

1. Upon due consideration of the facts and any statements of interested persons and arguments of counsel, any and all objections to the proposed Second Amendment to the Vision Fuels PUD Conceptual Plan for the Property, located in the vicinity of 3805 Vandalia Road and legally described as follows, are hereby overruled, and the hearing is closed:

2nd Amendment Legal Description

THE NORTH 726 FEET OF THE NORTHEAST QUARTER (NE1/4) OF THE NORTHWEST QUARTER (NW1/4) AND THE EAST 157 FEET OF THE NORTH 726 FEET OF THE NORTHWEST QUARTER (NW1/4) OF THE NORTHWEST QUARTER (NW1/4) OF SECTION SEVENTEEN (S17), TOWNSHIP SEVENTY-EIGHT NORTH (T78N), RANGE TWENTY-THREE WEST (R23W) OF THE FIFTH PRINCIPAL MERIDIAN (5TH P.M.), ALL NOW INCLUDED IN AND FORMING A PART OF THE CITY OF DES MOINES, COUNTY OF POLK, STATE OF IOWA, SUBJECT TO EASEMENTS OF RECORD, AND CONTAINING APPROXIMATELY 24.28 ACRES (1,057,653 SQUARE FEET).

AND

THE SOUTH 560 FEET OF THE NORTHEAST QUARTER (NE1/4) OF THE NORTHWEST QUARTER (NW1/4) AND THE EAST 157 FEET OF THE SOUTH 560 FEET OF THE NORTHWEST QUARTER (NW1/4) OF THE NORTHWEST QUARTER (NW1/4) OF SECTION SEVENTEEN (S17), TOWNSHIP SEVENTY-EIGHT NORTH (T78N), RANGE TWENTY-THREE WEST (R23W) OF THE FIFTH PRINCIPAL MERIDIAN (5TH P.M.), ALL NOW INCLUDED IN AND FORMING A PART OF THE CITY OF DES MOINES, COUNTY OF POLK, STATE OF IOWA, SUBJECT TO EASEMENTS OF RECORD, AND CONTAINING APPROXIMATELY 18.89 ACRES (822,859 SQUARE FEET).

2. The proposed Second Amendment to the Vision Fuels PUD Conceptual Plan, as on file in the Community Development Department, is hereby found to be in conformance with the PlanDSM: Creating Our Tomorrow Plan and is hereby approved.

MOVED BY _____ TO ADOPT.

FORM APPROVED:

(ZON2016-00078)



 Glenna K. Frank, Assistant City Attorney

COUNCIL ACTION	YEAS	NAYS	PASS	ABSENT
COWNIE				
COLEMAN				
GATTO				
GRAY				
HENSLEY				
MOORE				
WESTERGAARD				
TOTAL				

MOTION CARRIED APPROVED

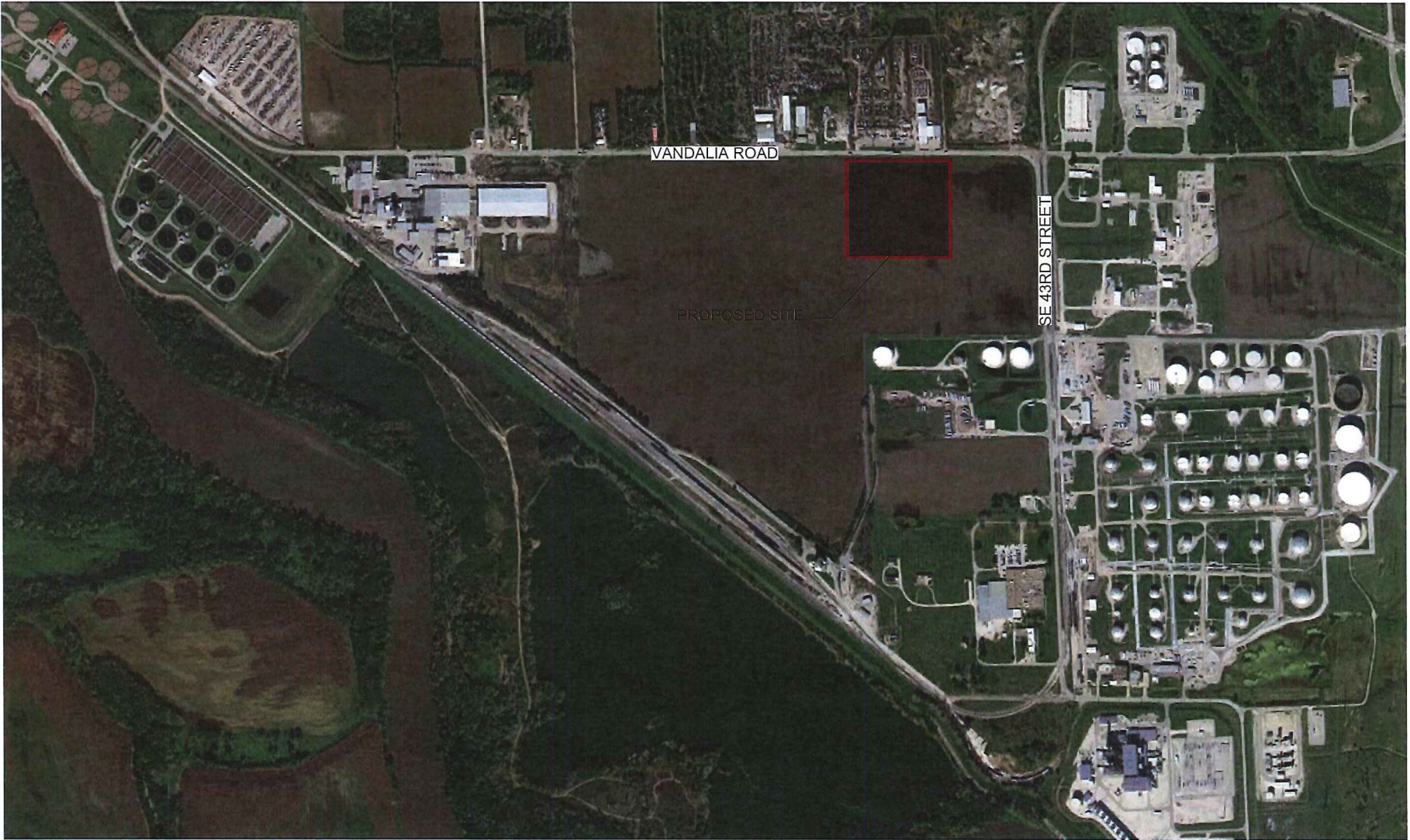
_____ Mayor

CERTIFICATE

I, DIANE RAUH, City Clerk of said City hereby certify that at a meeting of the City Council of said City of Des Moines, held on the above date, among other proceedings the above was adopted.

IN WITNESS WHEREOF, I have hereunto set my hand and affixed my seal the day and year first above written.

_____ City Clerk



DES MOINES COLD STORAGE - LOCATION MAP



EXISTING PROPERTY

LANDSCAPE SUMMARY

VANDALIA FRONTAGE = APPROX. 800 FT

STREET BUFFER LANDSCAPING REQUIRED
 OVERSTORY = 12
 SHRUBS = 36

STREET BUFFER LANDSCAPING PROVIDED
 OVERSTORY = 10
 EVERGREEN = 6
 ORNAMENTAL = 11
 SHRUBS = 20

OPEN SPACE PLANTINGS

REQUIRED
 OVERSTORY = 18
 EVERGREEN = 18
 SHRUBS = 18

PROVIDED
 OVERSTORY = 19
 EVERGREEN = 17
 SHRUBS = 18



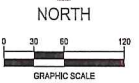
building strong communities.

1360 NW 121st, Street
 Clive, Iowa 50325
 515-964-1229
 fax 515-964-2370

NOTICE:
 McClure Engineering Company waives any and all responsibility and liability for problems which arise from failure to follow these Plans, Specifications, and the engineering, land surveying or the practices which relate thereto. It shall remain the client's responsibility to ensure compliance with respect to any errors, omissions, inaccuracies, and/or omissions which are alleged.

COPYRIGHT:
 Copyright and property rights in these documents are reserved and retained by McClure Engineering Company. It is reproduction, changes, or copies in any manner shall be made without obtaining prior written consent from McClure Engineering Company.

Conceptual Landscape Plan



Des Moines Cold Storage Greenfield Site
 Des Moines, IA

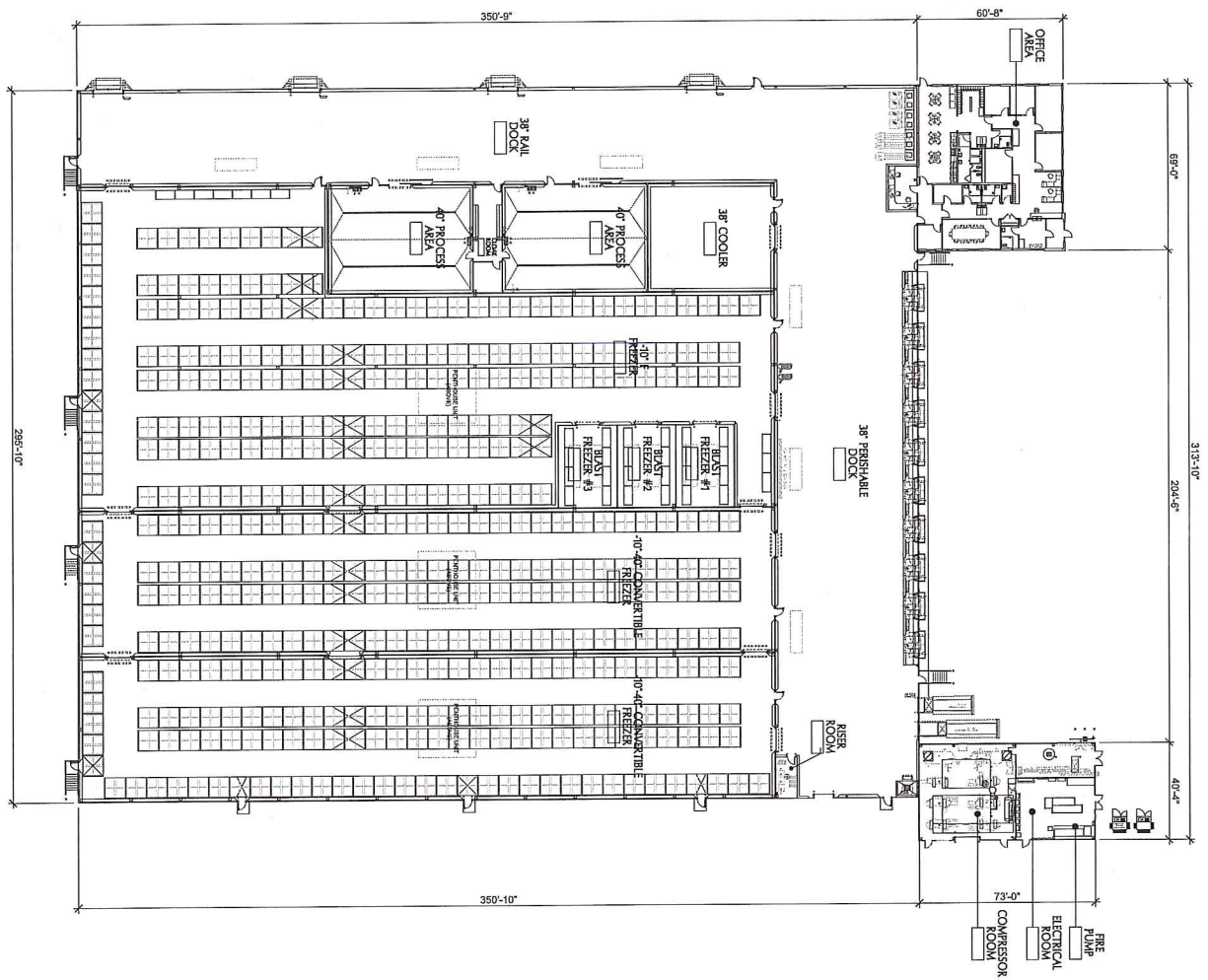
March 23, 2016

REVISED
 APRIL 5, 2016

DESIGNED BY C Smith
 DRAWN BY C Smith
 CHECKED BY
 FIELD BOOK NO.

DRAWING NO. LA-01
 SHEET NO. 01 / 01

M:\Projects\2016\160110\Des Moines Cold Storage Greenfield Site\Conceptual Landscape.dwg
 4/22/16 11:13:21 AM



 NORTH
 OVERALL FLOOR PLAN
 T = 3/8" = 1'-0"

64
 A101
 ARCHITECTURAL

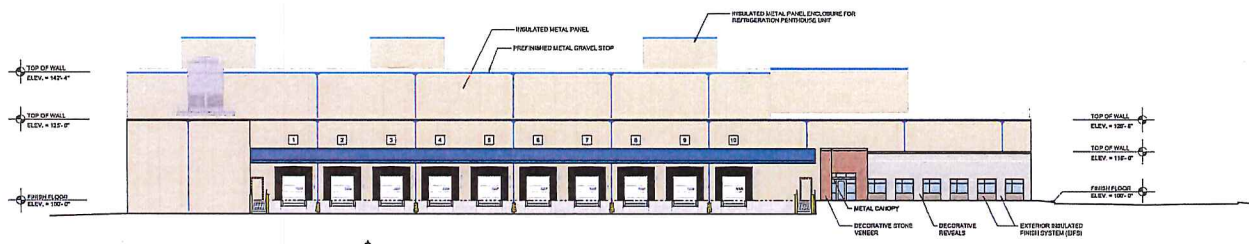
DATE	BY	APP'D
12/20/2018	JK	JK
NO.	CHK'D	DATE
1	JK	12/20/2018
SHEET TITLE		
OVERALL FLOOR PLAN		
PRELIMINARY DIMS.		
FINAL CONSTR. DIMS.		
SHEET NUMBER		

PROPOSED NEW FACILITY FOR
 DES MOINES COLD STORAGE
 VANDALIA ROAD
 DES MOINES, IOWA

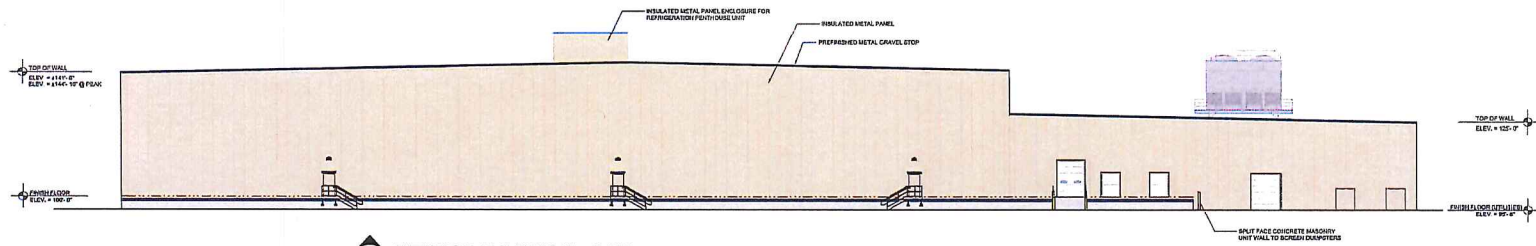


ESI
 DESIGN SERVICES
 150 Walnut Ridge Drive | Fort Dodge, IA 50501 | 252.269.2520 T | 252.269.2520 F

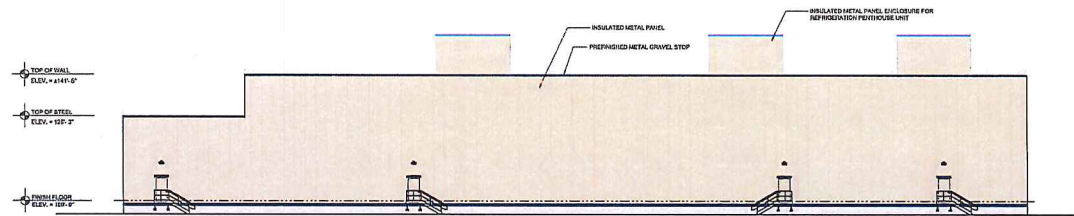
PRELIMINARY NOT FOR CONSTRUCTION



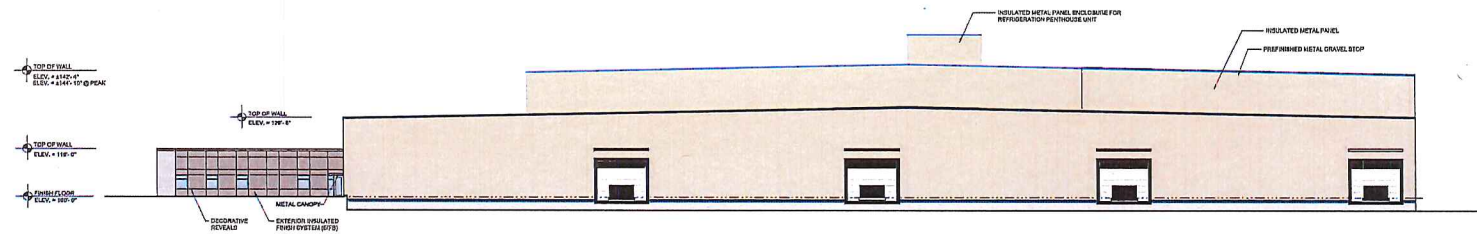
1 EXTERIOR ELEVATION - NORTH
A301 1/16" = 1'-0"



2 EXTERIOR ELEVATION - EAST
A301 1/16" = 1'-0"



3 EXTERIOR ELEVATION - SOUTH
A301 1/16" = 1'-0"



4 EXTERIOR ELEVATION - WEST
A301 1/16" = 1'-0"



1000 Main Street, Des Moines, IA 50319
515.281.1234

PROPOSED NEW FACILITY FOR
DES MOINES COLD STORAGE
VANDALIA ROAD
DES MOINES, IOWA

REVISIONS

△	
△	
△	
△	
△	
△	
△	
△	
△	
△	
△	
△	

DATE	JOB NO.
4/20/15	15-03041
DWG BY	CHKD BY
NRS	TPC

SHEET TITLE
EXTERIOR ELEVATIONS

PRELIMINARY DWGS	<input type="checkbox"/>
FINAL CONST. DWGS	<input type="checkbox"/>
SHEET NUMBER	
A301	
ARCHITECTURAL	

PRELIMINARY NOT FOR CONSTRUCTION

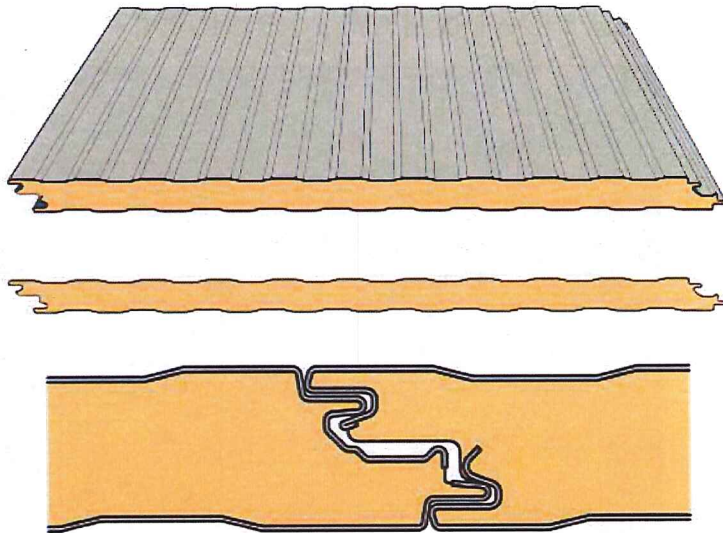
Des Moines Cold



Storage Co., Inc.

Building Materials

Warehouse



Insulated Metal Wall Panel

Panel Color: Sandstone

Trim Color: Blue

Insulated metal wall panels provide significant R-value which is necessary to maintain sub-zero temperatures within the interior storage spaces.



I.M.P. Building Example

Des Moines Cold



Storage Co., Inc.

Building Materials

Office



Exterior Insulated Finish System (EIFS)



Decorative Stone Veneer

64

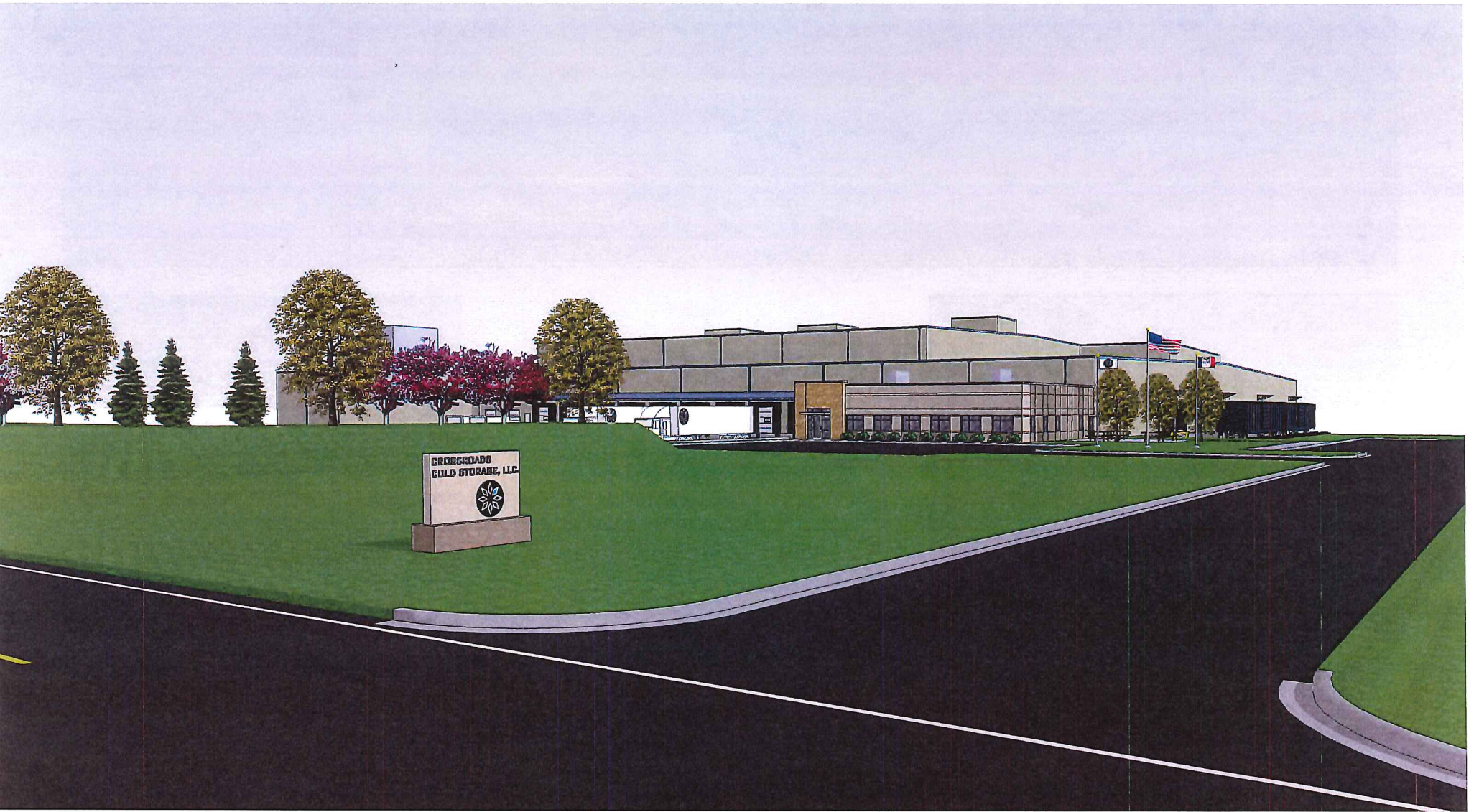
Des Moines Cold



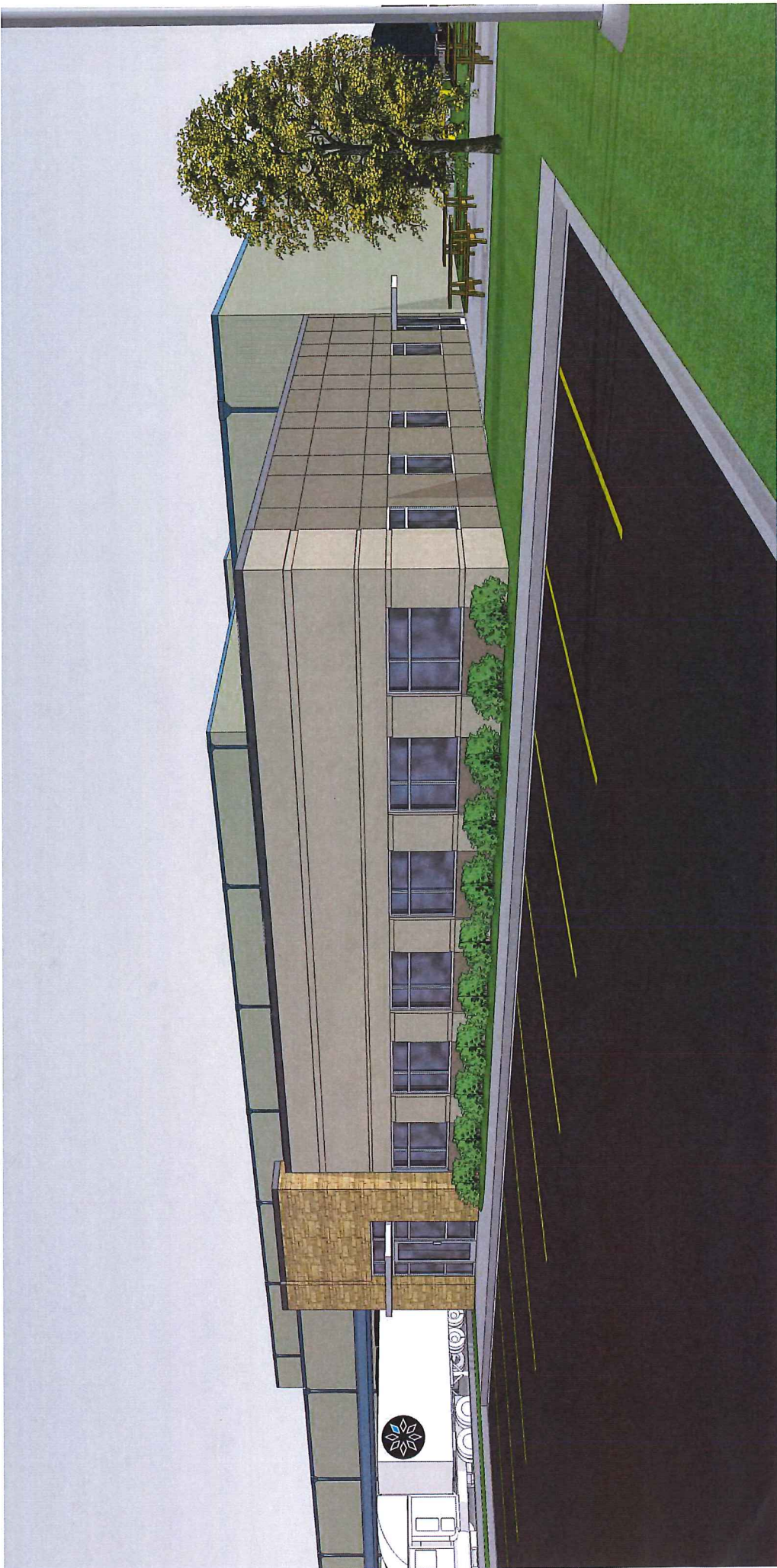
Storage Co., Inc.

Building Materials
Examples

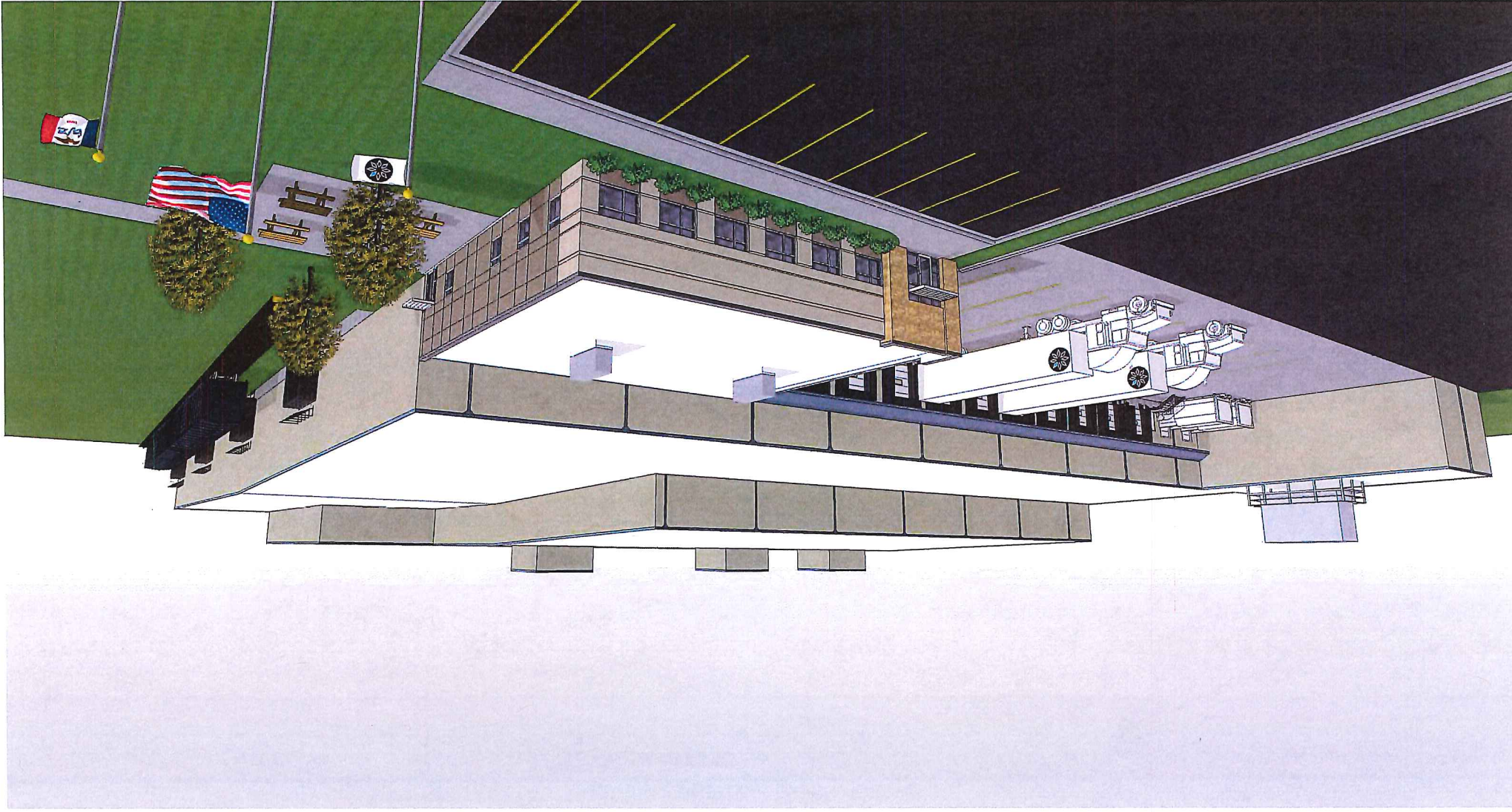




64

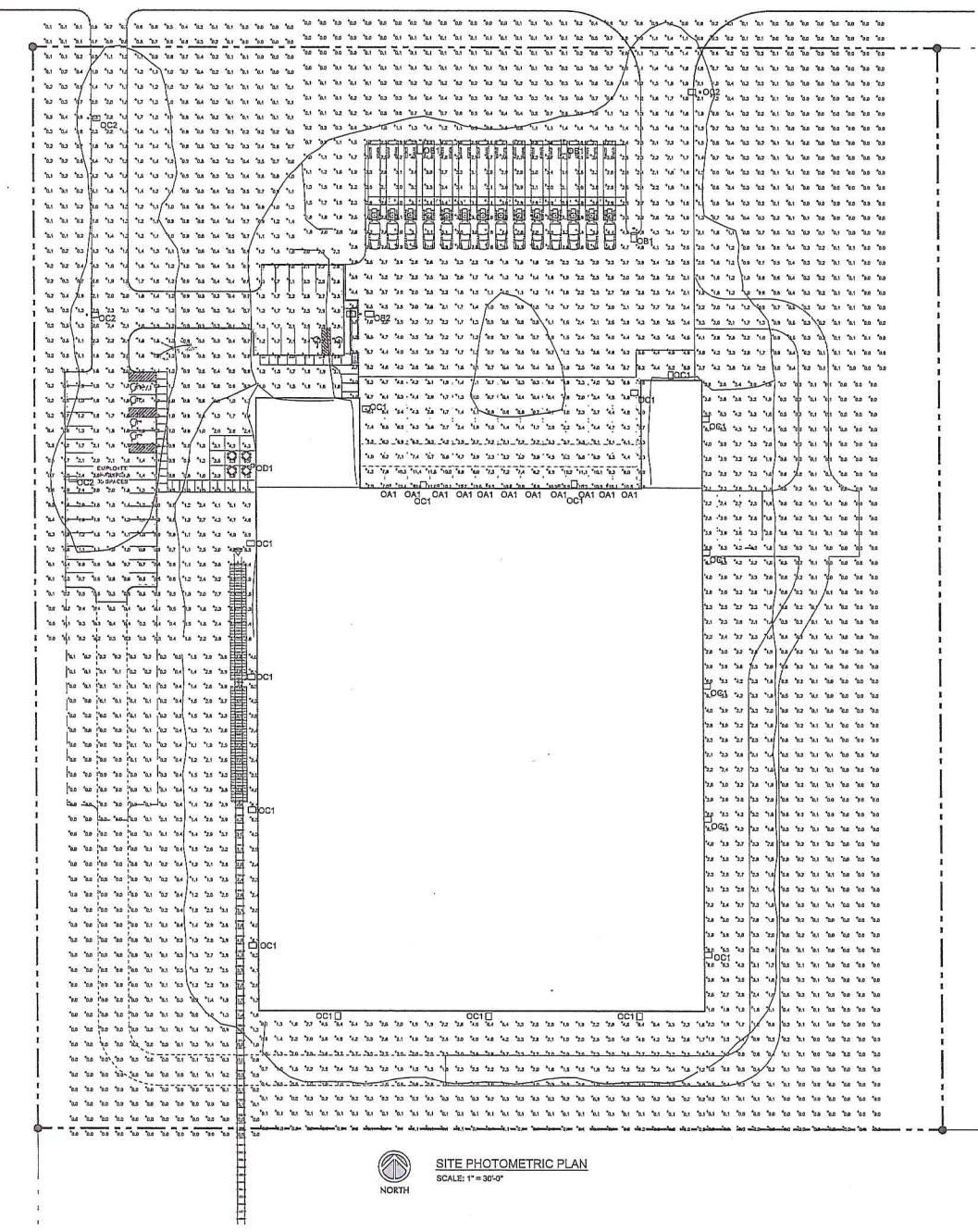


64





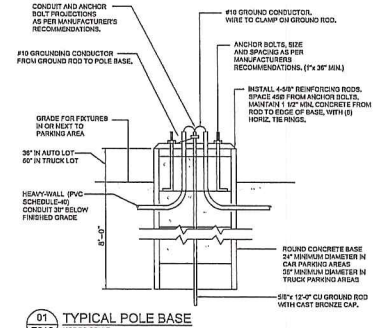
104



NORTH
SITE PHOTOMETRIC PLAN
SCALE: 1" = 30'-0"

		FIXTURE DATA					LAMP DATA		REF.
FIXTURE	DESCRIPTION	MANUFACTURER	CATALOG NO.	MOUNTING	VOLTS	CITY	LAMP TYPE	NOTES	
OAT	HOOK GANTRY LIGHT	LITTONIA	WRL168-4FL077	FROCESSED POLE	277	-	LED	1,2,4	
OC1	SINGLE HEAD AREA LIGHT	LITTONIA	DS14LE-400-100W-48V-T8AH-VOLTS-EDD	POLE	277	-	LED	1,2,4	
OC2	DUAL HEAD AREA LIGHT	LITTONIA	DS20P74ED-100W-48V-T8AH-VOLTS-EDD	POLE	277	-	LED	1,2,4	
OC3	AREA LIGHT	LITTONIA	DS14LE-800W-48V-T8AH-VOLTS-EDD	POLE @ 20'	277	-	LED		
OC4	SINGLE HEAD AREA LIGHT	LITTONIA	DS14LE-400-100W-48V-T8AH-VOLTS-EDD	POLE WALL @ 15'	277	-	LED	1,2,4	
OC1	AREA LIGHT	LITTONIA	DS14LE-800-100W-48V-T8AH-VOLTS-EDD	POLE WALL @ 15'	277	-	LED		

- SCHEDULE REFERENCE NOTES:
1. PROVIDE 24" DIAMETER CONCRETE BASE, SEE DETAIL ON THIS SHEET.
 2. PROVIDE SINGLE MOUNTING APPROPRIATE.
 3. PROVIDE (2) MOUNTING ARM BRACKETS AT 100 DEGREES.
 4. PROVIDE 30"x30" SQUARE POLE IN COLOR TO MATCH FIXTURE HEADS.



01
E010
TYPICAL POLE BASE
NOT TO SCALE



PROPOSED NEW FACILITY FOR
DES MOINES COLD STORAGE
VANDALIA ROAD
DES MOINES, IOWA

REVISIONS
DATE: 3/24/16 JOB NO: 16-100001
DWG BY: JNF CHECK BY: TJM
SHEET TITLE: SITE LIGHTING PLAN, SCHEDULE AND DETAILS
PRELIMINARY DWG. FINAL CONST. DWG.
SHEET NUMBER

E010
ELECTRICAL

PRELIMINARY NOT FOR CONSTRUCTION



FEATURES & SPECIFICATIONS

INTENDED USE — General illumination for rough service (vandal-resistant) applications. Ideal for interior or exterior applications where safety and security are a concern such as retail, under canopies, gas stations and bank drive thru's. **Certain airborne contaminants can diminish integrity of acrylic.** [Click here for Acrylic Environmental Compatibility table for suitable uses.](#)

CONSTRUCTION — Housing: 16-gauge cold-rolled steel.

Door: 16-gauge cold-rolled steel door, secured by either stainless steel tamper-resistant Torx® T-20 or standard stainless steel slotted hex-head screws (four of each included).

Finish: Post-painted after fabrication in white polyester powder coat for high reflectance, durability and corrosion resistance.

OPTICS — Multiple lens options available. Choose from .125" polycarbonate, white or clear, or flat and drop dish glass lenses. For maximum lumens use the less lens option.

ELECTRICAL — Light engine(s) consist of 10 high-efficacy LEDs mounted to a metal core circuit board and integral aluminum heat sinks to maximize heat dissipation and promote long life (50,000 hrs at 25°C, L70). Class 2 electronic driver has a power factor >90%, THD <20%. 0 to 10V dimming standard. Easily-serviceable surge protection device meets a minimum Category B (per ANSI/IEEE C62.41.2).

INSTALLATION — Separate yoke mounting frame provided with adjustable brackets for use with C-channel bar hangers, which are not included.

LISTINGS — CSA certified to UL and C-UL standards. Luminaire is rated for wet locations in covered-ceiling applications and IP65 rated for glass lens and less lens options only. Rated for 25°C ambient temperatures.

WARRANTY — 5-year limited warranty. Complete warranty terms located at www.acuitybrands.com/CustomerResources/Terms_and_conditions.aspx

For installed Rough Service Product(s), Acuity warrants that, for the lifetime of the product(s), the polycarbonate lens and/or polycarbonate housing will withstand breakage resulting from occasional physical abuse and rough handling (the "Rough Service Warranty"), notwithstanding the vandalism exclusion set forth at www.acuitybrands.com/CustomerResources/Terms_and_Conditions.aspx

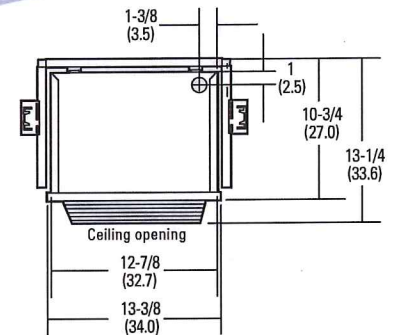
Actual performance may differ as a result of end-user environment and application.

Note: Specifications subject to change without notice.

Catalog Number	
Notes	Des Moines Cold Storage
Type	OA1

Rough Service LED Recessed Fixture

VRR LED



All dimensions are shown in inches (centimeters) unless otherwise noted.

ORDERING INFORMATION

Lead times will vary depending on options selected. Consult with your sales representative.

Example: VRR LED 3L CP 120

VRR LED Series	Lumens/Color temperature ¹	Lens	Voltage ³	Options
VRR LED	1L 1500 lumens (blank) 4000K, 70 CRI	CPP Clear prismatic polycarbonate	120 120V	ALDF Aluminum door frame
	3L 3000 lumens 50 5000K, 70 CRI	WPP White prismatic polycarbonate	277 277V	BSL722 Bodine® emergency LED battery pack for 0°C and up ⁴
	4L 4000 lumens	DHL Drop Holophane® glass ²		BSL722C Bodine® emergency LED battery pack for -20°C and up ⁴
		FHL Flat Holophane® glass ²		DIM Pre-wired for 0-10V low voltage dimming (100%- 10%)
		L/LENS Less lens		L/SP Less surge protector
				SF Single fuse ³

Accessories: Order as separate catalog number.

RK1 T20BIT	Hex-base driver bit, Torx T20, for tamper-resistant screws with center reject pin.
RK1 T20DRV	Torx T20 screwdriver for use with tamper-resistant screws with center reject pin.
PF	Plaster frame; provides a clean edge for ceiling openings.
VRRGA	2' X 2' NEMA G grid adapter, textured white

Notes

- The CCT value provided is of lamp source and actual CCT will vary upon levels.
- Glass lenses must also order ALDF option.
- Must specify voltage.
- Available with 1L an 3L only.

64



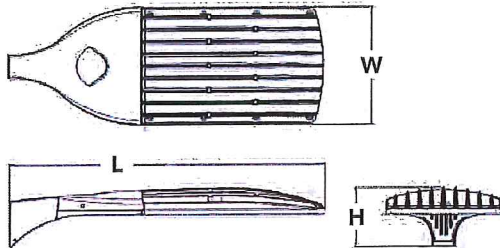
D-Series Size 2 LED Area Luminaire

d^{series}



Specifications

EPA:	1.1 ft ² (0.10 m ²)
Length:	40" (101.6 cm)
Width:	15" (38.1 cm)
Height:	7-1/4" (18.4 cm)
Weight (max):	36 lbs (16.3 kg)



Catalog Number

Notes Des Moines Cold Storage

Type OD1

Hit the Tab key or mouse over the page to see all interactive elements.

Introduction

The modern styling of the D-Series is striking yet unobtrusive - making a bold, progressive statement even as it blends seamlessly with its environment.

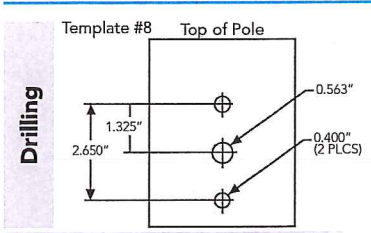
The D-Series distills the benefits of the latest in LED technology into a high performance, high efficacy, long-life luminaire. The outstanding photometric performance results in sites with excellent uniformity, greater pole spacing and lower power density. The Size 2 is ideal for replacing 400-1000W metal halide in area lighting applications with energy savings of up to 80% and expected service life of over 100,000 hours.

Ordering Information

EXAMPLE: DSX2 LED 80C 1000 40K T4M MVOLT SPA DDBXD

DSX2 LED									
Series	LEDs	Drive current		Color temperature		Distribution	Voltage	Mounting	
DSX2 LED	Forward optics	530	530 mA	30K	3000 K	T1S Type I Short	T5VS Type V Very Short	MVOLT ³	Shipped included
	80C 80 LEDs (four engine)	700	700 mA	40K	4000 K	T2S Type II Short	T5S Type V Short	120 ³	SPA Square pole mounting
	100C 100 LEDs (four engines)	1000	1000 mA (1 A)	50K	5000 K	T2M Type II Medium	T5M Type V Medium	208 ³	RPA Round pole mounting
	Rotated optics¹	1200	1200 mA ² (1.2 A)	AMBPC	Amber phosphor converted	T3S Type III Short	T5W Type V Wide	240 ³	WBA Wall bracket
	90C 90 LEDs					T3M Type III Medium	BLC Backlight control ²	277 ³	SPUMBA Square pole universal mounting adaptor ⁵
						T4M Type IV Medium	LCCO Left corner cutoff ²	347 ⁴	RPUMBA Round pole universal mounting adaptor ⁵
						TFTM Forward Throw Medium	RCCO Right corner cutoff ²	480 ⁴	Shipped separately
									KMA8 DDBXD U Mast arm mounting bracket adaptor (specify finish) ⁶

Control options		Other options	Finish (required)
Shipped installed		Shipped installed	DDBXD Dark bronze
PER NEMA twist-lock receptacle only (no controls) ⁷	BL30 Bi-level switched dimming, 30% ^{12,14}	HS House-side shield ¹⁷	DBLXD Black
PER5 Five-wire receptacle only (no controls) ^{7,8}	BL50 Bi-level switched dimming, 50% ^{12,14}	SF Single fuse (120, 277, 347V) ³	DNAXD Natural aluminum
PER7 Seven-wire receptacle only (no controls) ^{7,8}	PNMTDD3 Part night, dim till dawn ¹⁵	DF Double fuse (208, 240, 480V) ³	DWHXD White
DMG 0-10V dimming driver (no controls) ⁹	PNMT5D3 Part night, dim 5 hrs ¹⁵	L90 Left rotated optics ¹⁸	DDBTXD Textured dark bronze
DCR Dimmable and controllable via ROAM [®] (no controls) ¹⁰	PNMT6D3 Part night, dim 6 hrs ¹⁵	R90 Right rotated optics ¹⁸	DBLTXD Textured black
DS Dual switching ^{11,12}	PNMT7D3 Part night, dim 7 hrs ¹⁵		DNATXD Textured natural aluminum
PIRH Motion sensor, 15-30" mounting height ¹³	FAO Field Adjustable Output ¹⁶		DWHGXD Textured white



DSX2 shares a unique drilling pattern with the AERIS™ family. Specify this drilling pattern when specifying poles, per the table below.

DM19AS Single unit	DM29AS 2 at 90° *
DM28AS 2 at 180°	DM39AS 3 at 90° *
DM49AS 4 at 90° *	DM32AS 3 at 120° **

Example: SSA 20 4C DM19AS DDBXD
Visit Lithonia Lighting's **POLES CENTRAL** to see our wide selection of poles, accessories and educational tools.
*Round pole top must be 3.25" O.D. minimum.
**For round pole mounting (RPA) only.

Controls & Shields

DL127F 1.5 JU Photocell - SSL twist-lock (120-277V) ¹⁹	DL1347F 1.5 CUL JU Photocell - SSL twist-lock (347V) ¹⁹
DL1480F 1.5 CUL JU Photocell - SSL twist-lock (480V) ¹⁹	SC U Shorting cap ¹⁹
DSX2HS 80C U House-side shield for 80 LED unit	DSX2HS 90C U House-side shield for 90 LED unit
DSX2HS 100C U House-side shield for 100 LED unit	PUMBA DDBXD U ¹⁸ Square and round pole universal mounting bracket (specify finish)
KMA8 DDBXD U Mast arm mounting bracket adaptor (specify finish) ⁶	

For more control options, visit **DTL** and **ROAM** online.

Tenon Mounting Slipfitter**

Tenon O.D.	Single Unit	2 at 180°	2 at 90°	3 at 120°	3 at 90°	4 at 90°
2-3/8"	AST20-190	AST20-280	AST20-290	AST20-320	AST20-390	AST20-490
2-7/8"	AST25-190	AST25-280	AST25-290	AST25-320	AST25-390	AST25-490
4"	AST35-190	AST35-280	AST35-290	AST35-320	AST35-390	AST35-490

- ### NOTES
- Rotated optics option (L90 or R90) required for 90C.
 - Not available in AMBPC.
 - MVOLT driver operates on any line voltage from 120-277V (50/60 Hz). Single fuse (SF) requires 120V, 277V or 347V. Double fuse (DF) requires 208V, 240V or 480V.
 - Not available with BL30, BL50 or PNMT options.
 - Available as a separate combination accessory: PUMBA (finish) U; 1.5 G vibration load rating per ANCI C136.31.
 - Must be ordered as a separate accessory; see Accessories information. For use with 2-3/8" mast arm (not included).
 - Photocell ordered and shipped as a separate line item from Acuity Brands Controls. See accessories. Not available with DS option.
 - If ROAM[®] node required, it must be ordered and shipped as a separate line item from Acuity Brands Controls. Not available with DCR.
 - DMG option for 347V or 480V requires 1000mA.
 - Specifies a ROAM[®] enabled luminaire with 0-10V dimming capability; PER option required. Additional hardware and services required for ROAM[®] deployment; must be purchased separately. Call 1-800-442-6745 or email: sales@roomservices.net. N/A with DS, PIRH, PER5, PER7, BL30, BL50 or PNMT options.
 - Provides 50/50 luminaire operation via two independent drivers on two separate circuits. N/A with 80C 530, 90C 530, PER, PER5, PER7, DCR, BL30, BL50 or PNMT options.
 - Requires an additional switched circuit.
 - Specifies the **SensorSwitch SBGR-6-ODP** control; see **Motion Sensor Guide** for details. Dimming driver standard. Not available with DS, PER5 or PER7.
 - Dimming driver standard. MVOLT only. Not available with 347V, 480V, DCR, DS, PER5, PER7 or PNMT options.
 - Dimming driver standard. MVOLT only. Not available with 347V, 480V, DCR, DS, PER5, PER7, BL30 or BL50.
 - Dimming driver standard. Not available with PER5, PER7, DMG, DCR, DS, BL30, BL50 or PNMT options.
 - Also available as a separate accessory; see Accessories information.
 - Available with 90 LEDs (90C option) only.
 - Requires luminaire to be specified with PER option. Ordered and shipped as a separate line item from Acuity Brands Controls.





D-Series Size 1 LED Area Luminaire

d^{series}



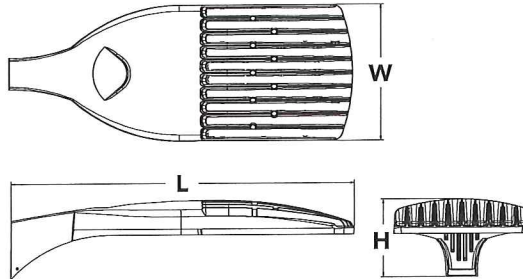
Catalog Number	
Notes	Des Moines Cold Storage
Type	OD1

Hit the Tab key or mouse over the page to see all interactive elements.

Introduction

The modern styling of the D-Series is striking yet unobtrusive - making a bold, progressive statement even as it blends seamlessly with its environment.

The D-Series distills the benefits of the latest in LED technology into a high performance, high efficacy, long-life luminaire. The outstanding photometric performance results in sites with excellent uniformity, greater pole spacing and lower power density. It is ideal for replacing 100 – 400W metal halide in pedestrian and area lighting applications with typical energy savings of 65% and expected service life of over 100,000 hours.



Specifications

EPA:	1.01 ft ² (0.09 m ²)
Length:	33" (83.8 cm)
Width:	13" (33.0 cm)
Height:	7-1/2" (19.0 cm)
Weight (max):	27 lbs (12.2 kg)

Ordering Information

EXAMPLE: DSX1 LED 60C 1000 40K T3M MVOLT SPA DDBXD

Series	LEDs	Drive current	Color temperature	Distribution	Voltage	Mounting
DSX1 LED	Forward optics 30C 30 LEDs (one engine) 40C 40 LEDs (two engines) 60C 60 LEDs (two engines) Rotated optics¹ 60C 60 LEDs (two engines)	530 530 mA 700 700 mA 1000 1000 mA (1 A)	30K 3000 K 40K 4000 K 50K 5000 K AMBPC Amber phosphor converted ²	T1S Type I Short T2S Type II Short T2M Type II Medium T3S Type III Short T3M Type III Medium T4M Type IV Medium TFTM Forward Throw Medium TSVS Type V Very Short T5S Type V Short T5M Type V Medium T5W Type V Wide BLC Backlight control ² LCCO Left corner cutoff ² RCCO Right corner cutoff ²	MVOLT ³ 120 ³ 208 ³ 240 ³ 277 ³ 347 ⁴ 480 ⁴	Shipped included SPA Square pole mounting RPA Round pole mounting WBA Wall bracket SPUMBA Square pole universal mounting adaptor ⁵ RPUMBA Round pole universal mounting adaptor ⁵ Shipped separately KMA8 DDBXD U Mast arm mounting bracket adaptor (specify finish) ⁶

Control options	Other options	Finish (required)
Shipped installed PER NEMA twist-lock receptacle only (no controls) ⁷ PER5 Five-wire receptacle only (no controls) ^{7,8} PER7 Seven-wire receptacle only (no controls) ^{7,8} DMG 0-10V dimming driver (no controls) ⁹ DCR Dimmable and controllable via ROAM [®] (no controls) ¹⁰ DS Dual switching ^{11,12} PIR Motion/ambient sensor, 8-15' mounting height, ambient sensor enabled at 5fc ¹³ PIRH Motion/ambient sensor, 15-30' mounting height, ambient sensor enabled at 5fc ¹³	PIR1FC3V Motion/ambient sensor, 8-15' mounting height, ambient sensor enabled at 1fc ¹³ PIRH1FC3V Motion/ambient sensor, 15-30' mounting height, ambient sensor enabled at 1fc ¹³ BL30 Bi-level switched dimming, 30% ^{12,14} BL50 Bi-level switched dimming, 50% ^{12,14} PNMTDD3 Part night, dim till dawn ¹⁵ PNMT5D3 Part night, dim 5 hrs ¹⁵ PNMT6D3 Part night, dim 6 hrs ¹⁵ PNMT7D3 Part night, dim 7 hrs ¹⁵ HS House-side shield ¹⁶ WTB Utility terminal block ¹⁷ SF Single fuse (120, 277, 347V) ¹⁸ DF Double fuse (208, 240, 480V) ¹⁸ L90 Left rotated optics ¹⁹ R90 Right rotated optics ¹⁹	DDBXD Dark bronze DBLXD Black DNAXD Natural aluminum DWHXD White DDBTXD Textured dark bronze DBLBXD Textured black DNATXD Textured natural aluminum DWHGXD Textured white

Controls & Shields

Accessories	Ordered and shipped separately.
DLL127F 1.5 JU	Photocell - SSL twist-lock (120-277V) ²⁰
DLL347F 1.5 CUL JU	Photocell - SSL twist-lock (347V) ²⁰
DLL480F 1.5 CUL JU	Photocell - SSL twist-lock (480V) ²⁰
SCU	Shorting cap ²⁰
DSX1HS 30C U	House-side shield for 30 LED unit
DSX1HS 40C U	House-side shield for 40 LED unit
DSX1HS 60C U	House-side shield for 60 LED unit
PUMBA DDBXD U*	Square and round pole universal mounting bracket (specify finish)
KMA8 DDBXD U	Mast arm mounting bracket adaptor (specify finish) ⁶

For more control options, visit [DTL](#) and [ROAM](#) online.

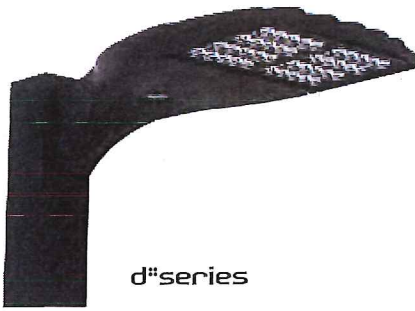
NOTES

- Rotated optics available with 60C only.
- AMBPC not available with in 530mA, 700mA, BLC, LCCO or RCCO.
- MVOLT driver operates on any line voltage from 120-277V (50/60 Hz). Specify 120V, 208V, 240V or 277V options only when ordering with fusing (SF, DF options).
- Not available with single board, 530mA product (30C 530 or 60C 530 DS). Not available with BL30, BL50 or PNMT options.
- Available as a separate combination accessory: PUMBA (finish) U; 1.5 G vibration load rating per ANCI C136.31.
- Must be ordered as a separate accessory; see Accessories information. For use with 2-3/8" mast arm (not included).
- Photocell ordered and shipped as a separate line item from Acuity Brands Controls. See accessories. Not available with DS option.
- If ROAM[®] node required, it must be ordered and shipped as a separate line item from Acuity Brands Controls. Not available with DCR.
- DMG option for 347V or 480V requires 1000mA.
- Specifies a ROAM[®] enabled luminaire with 0-10V dimming capability; PER option required. Additional hardware and services required for ROAM[®] deployment; must be purchased separately. Call 1-800-442-6745 or email: sales@roamservices.net. N/A with PIR options DS, PER5, PER7, BL30, BL50 or PNMT options.

- Requires 40C or 60C. Provides 50/50 luminaire operation via two independent drivers on two separate circuits. N/A with PER, DCR, WTB, PIR or PIRH.
- Requires an additional switched circuit.
- PIR and PIR1FC3V specify the [SensorSwitch SBGR-10-ODP](#) control; PIRH and PIRH1FC3V specify the [SensorSwitch SBGR-6-ODP](#) control; see [Motion Sensor Guide](#) for details. Dimming driver standard. Not available with PER5 or PER7. Ambient sensor disabled when ordered with DCR. Separate on/off required.
- Dimming driver standard. MVOLT only. Not available with 347V, 480V, DCR, DS, PER5, PER7 or PNMT options.
- Dimming driver standard. MVOLT only. Not available with 347V, 480V, DCR, DS, PER5, PER7, BL30 or BL50.
- Also available as a separate accessory; see Accessories information.
- WTB not available with DS.
- Single fuse (SF) requires 120V, 277V or 347V. Double fuse (DF) requires 208V, 240V or 480V.
- Available with 60 LEDs (60C option) only.
- Requires luminaire to be specified with PER option. Ordered and shipped as a separate line item from Acuity Brands Controls.



44



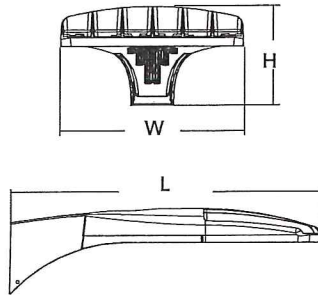
D-Series Size 0 LED Area Luminaire



d^{series}

Specifications

EPA:	0.95 ft ² (.09 m ²)
Length:	26" (66.0 cm)
Width:	13" (33.0 cm)
Height:	7" (17.8 cm)
Weight (max):	16 lbs (7.25 kg)



Catalog Number	
Notes	Des Moines Cold Storage
Type	OD1

Hit the Tab key or mouse over the page to see all interactive elements.

Introduction

The modern styling of the D-Series is striking yet unobtrusive - making a bold, progressive statement even as it blends seamlessly with its environment.

The D-Series distills the benefits of the latest in LED technology into a high performance, high efficacy, long-life luminaire. The outstanding photometric performance results in sites with excellent uniformity, greater pole spacing and lower power density. It is ideal for replacing up to 400W metal halide with typical energy savings of 65% and expected service life of over 100,000 hours.

Ordering Information

EXAMPLE: DSX0 LED 40C 1000 40K T3M MVOLT SPA DDBXD

Series	LEDs	Drive current	Color temperature	Distribution	Voltage	Mounting
DSX0 LED	Forward optics 20C 20 LEDs (one engine) 40C 40 LEDs (two engines)	530 530 mA 700 700 mA 1000 1000 mA (1 A) ²	30K 3000 K 40K 4000 K 50K 5000 K AMBPC Amber phosphor converted ³	T1S Type I short T2S Type II short T2M Type II medium T3S Type III short T3M Type III medium T4M Type IV medium TFTM Forward throw medium T5VS Type V very short T5S Type V short T5M Type V medium T5W Type V wide BLC Backlight control ² LCCO Left corner cutoff ² RCCO Right corner cutoff ²	MVOLT ⁴ 120 ⁴ 208 ⁴ 240 ⁴ 277 ⁴ 347 ⁵ 480 ⁵	Shipped included SPA Square pole mounting RPA Round pole mounting WBA Wall bracket SPUMBA Square pole universal mounting adaptor ⁶ RPUMBA Round pole universal mounting adaptor ⁶ Shipped separately⁷ KMA8 DDBXD U Mast arm mounting bracket adaptor (specify finish)

Control options	Other options	Finish (required)
Shipped installed PER NEMA twist-lock receptacle only (no controls) ⁸ PER5 Five-wire receptacle only (no controls) ^{8,9} PER7 Seven-wire receptacle only (no controls) ^{8,9} DMG 0-10V dimming driver (no controls) ¹⁰ DCR Dimmable and controllable via ROAM [®] (no controls) ¹¹ PIR Motion/ambient sensor, 8-15' mounting height, ambient sensor enabled at 5fc. ¹² PIRH Motion/ambient sensor, 15-30' mounting height, ambient sensor enabled at 5fc. ¹²	PIR1FC3V Motion/ambient sensor, 8-15' mounting height, ambient sensor enabled at 1fc. ¹² PIRH1FC3V Motion/ambient sensor, 15-30' mounting height, ambient sensor enabled at 1fc. ¹² BL30 Bi-level switched dimming, 30% ^{13,14} BL50 Bi-level switched dimming, 50% ^{13,14} PNMTDD3 Part night, dim till dawn ¹⁵ PNMT5D3 Part night, dim 5 hrs ¹⁵ PNMT6D3 Part night, dim 6 hrs ¹⁵ PNMT7D3 Part night, dim 7 hrs ¹⁵	Shipped installed HS House-side shield ¹⁶ SF Single fuse (120, 277, 347V) ¹⁷ DF Double fuse (208, 240, 480V) ¹⁷ L90 Left rotated optics ¹ R90 Right rotated optics ¹ DDL Diffused drop lens ¹⁶ DBLXD Black DNAXD Natural aluminum DWHXD White DDBTXD Textured dark bronze DBLXDXD Textured black DNATXD Textured natural aluminum DWHGXD Textured white

Accessories

Ordered and shipped separately.

DL127F 1.5 JU	Photocell - SSL twist-lock (120-277V) ¹⁸
DL1347F 1.5 CUL JU	Photocell - SSL twist-lock (347V) ¹⁸
DL1480F 1.5 CUL JU	Photocell - SSL twist-lock (480V) ¹⁸
SCU	Shorting cap ¹⁸
DSXOHS 20C U	House-side shield for 20 LED unit ¹⁶
DSXOHS 30C U	House-side shield for 30 LED unit ¹⁶
DSXOHS 40C U	House-side shield for 40 LED unit ¹⁶
DSXODDL U	Diffused drop lens (polycarbonate) ¹⁶
PUMBA DDBXD U*	Square and round pole universal mounting bracket adaptor (specify finish)
KMA8 DDBXD U	Mast arm mounting bracket adaptor (specify finish) ⁷

- ### NOTES
- 30 LEDs (30C option) and rotated options (L90 or R90) only available together.
 - Not available with AMBPC.
 - AMBPC only available with 530mA or 700mA.
 - MVOLT driver operates on any line voltage from 120-277V (50/60 Hz). Specify 120V, 208V, 240V or 277V options only when ordering with fusing (SF, DF options).
 - Not available with single board, 530mA product (20C 530 or 30C 530). Not available with BL30, BL50 or PNMT options.
 - Available as a separate combination accessory: PUMBA (finish) U; 1.5 G vibration load rating per ANCI C136.31.
 - Must be ordered as a separate accessory; see Accessories information. For use with 2-3/8" mast arm (not included).
 - Photocell ordered and shipped as a separate line item from Acuity Brands Controls. See accessories.
 - If ROAM[®] node required, it must be ordered and shipped as a separate line item from Acuity Brands Controls. Not available with DCR.
 - DMG option for 347V or 480V requires 1000mA.

- Specifies a ROAM[®] enabled luminaire with 0-10V dimming capability; PER option required. Additional hardware and services required for ROAM[®] deployment; must be purchased separately. Call 1-800-442-6745 or email: sales@roamservices.net. N/A with PIR options PER5, PER7, BL30, BL50 or PNMT options.
- PIR and PIRH1FC3V specify the **SensorSwitch SBGR-10-ODP** control; PIRH and PIRH1FC3V specify the **SensorSwitch SBGR-6-ODP** control; see **Motion Sensor Guide** for details. Dimming driver standard. Not available with PER5 or PER7. Ambient sensor disabled when ordered with DCR. Separate on/off required.
- Requires an additional switched circuit.
- Dimming driver standard. MVOLT only. Not available with 347V, 480V, DCR, PER5, PER7 or PNMT options.
- Dimming driver standard. MVOLT only. Not available with 347V, 480V, DCR, PER5, PER7, BL30 or BL50.
- Also available as a separate accessory; see Accessories information.
- Single fuse (SF) requires 120V, 277V or 347V. Double fuse (DF) requires 208V, 240V or 480V.
- Requires luminaire to be specified with PER option. Ordered and shipped as a separate line item from Acuity Brands Controls.

