

Date May 7, 2018

**APPROVING PROFESSIONAL SERVICES AGREEMENT WITH  
STANTEC CONSULTING SERVICES INC. FOR  
DESIGN PHASE SERVICES FOR THE  
DES MOINES LEVEE ALTERATIONS – PHASE A,  
NOT TO EXCEED \$952,300**

BE IT RESOLVED BY THE CITY COUNCIL OF THE CITY OF DES MOINES, IOWA: That the Professional Services Agreement between the City of Des Moines and Stantec Consulting Services Inc., for a total cost not to exceed \$952,300, based on hourly rates, to provide design phase services for the Des Moines Levee Alterations – Phase A Project, a copy of which is on file in the office of the City Clerk, is hereby approved as to form and content.

BE IT FURTHER RESOLVED: That the Mayor and City Clerk are hereby authorized and directed to execute and attest, respectively, said Professional Services Agreement for and on behalf of the City of Des Moines, Iowa.

(Council Letter Number 18-224 attached)  
Activity ID 01-2018-008

Moved by \_\_\_\_\_ to adopt.

FORM APPROVED: \_\_\_\_\_  
Kathleen Vanderpool  
Deputy City Attorney

**SLN** Funding Source: 2018-2019 CIP, Page Storm Water-6, Flood Mitigation Improvements, SM087, Storm Revenue Bonds

COUNCIL ACTION	YEAS	NAYS	PASS	ABSENT
COWNIE				
BOESEN				
COLEMAN				
GATTO				
GRAY				
MANDELBAUM				
WESTERGAARD				
TOTAL				

MOTION CARRIED APPROVED

\_\_\_\_\_ Mayor

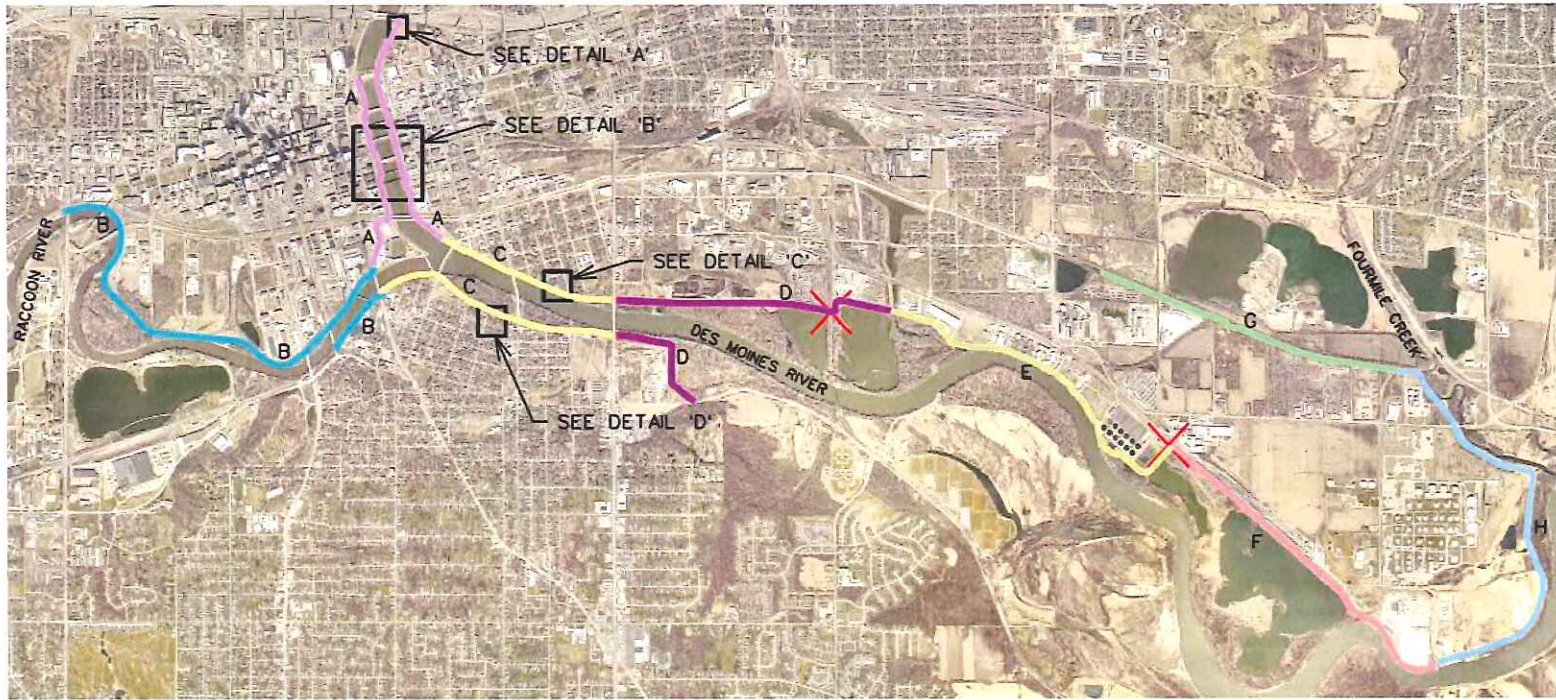
**CERTIFICATE**

I, DIANE RAUH, City Clerk of said City hereby certify that at a meeting of the City Council of said City of Des Moines, held on the above date, among other proceedings the above was adopted.

IN WITNESS WHEREOF, I have hereunto set my hand and affixed my seal the day and year first above written.

\_\_\_\_\_ City Clerk

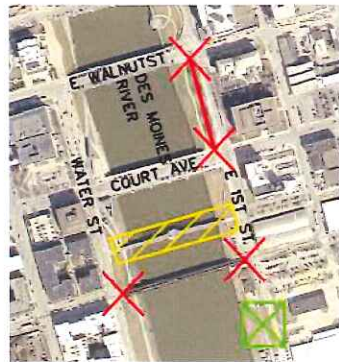




- LEGEND**  
 (TARGETED CONSTRUCTION YEAR  
 SUBJECT TO CORPS OF  
 ENGINEER'S APPROVAL)
- LEVEE ALTERATIONS  
 PROPOSED PHASING**
- A (2019)
  - B (FALL 2019-2020)
  - C (2021-EARLY 2022)
  - D (2022)
  - E (2023)
  - F (2024-EARLY 2025)
  - G (2022-2023)
  - H (2024-2025)
- ✗ USACE DOWNTOWN CLOSURE (2016-2018)
  - ✗ NEW STORM WATER PUMP STATION (2018-2019)
  - ▨ RIVERWALK RED MULTI-USE TRAIL BRIDGE ELEVATION (2017)



DETAIL 'A'  
 SCALE- 1"=30,000'



DETAIL 'B'  
 SCALE-1"=15,000'



DETAIL 'C'  
 SCALE- 1"=30,000'



DETAIL 'D'  
 SCALE- 1"=30,000'