



Date November 14, 2019

RESOLUTION APPROVING THE MAP AND DESIGNATION OF A MULTI-USE RECREATIONAL TRAIL

WHEREAS, trail development is a very high priority with the citizens of the City of Des Moines and the Des Moines City Council; and

WHEREAS, the bridge and trail improvements shown on the attached Map were constructed pursuant to an agreement between the City of Des Moines and Hubbell Realty Company and HRC NFS 1, LLC in order to provide a Multi-Use Recreational Trail for recreational and commuter opportunities; and

WHEREAS, an ordinance regulating the use of multi-use recreational trails has been adopted by the City Council of the City of Des Moines; and

WHEREAS, the Multi-Use Recreational Trail Ordinance requires that trails are to be designated as a Multi-Use Recreational Trail by approval of a Map showing such trail by resolution of the City Council; and

WHEREAS, the attached Multi-Use Recreational Trail Map has been prepared by the Parks and Recreation Department.

NOW, THEREFORE, BE IT RESOVLED, by the City Council of the City of Des Moines, Iowa, that the bridge and trail shown in the attached Map are hereby approved and designated as a Multi-Use Recreational Trail pursuant to City of Des Moines Code Sections 114-1 and 74-110 and the attached Map is hereby accepted and approved.

(Map Attachment)

Moved by _____ to approve.

APPROVED AS TO FORM:

Ann DiDonato
Ann DiDonato, Assistant City Attorney

COUNCIL ACTION	YEAS	NAYS	PASS	ABSENT
COWNIE				
BOESEN				
COLEMAN				
GATTO				
GRAY				
MANDELBAUM				
WESTERGAARD				
TOTAL				

CERTIFICATE

I, P. KAY CMELIK, City Clerk of said City hereby certify that at a meeting of the City Council of said City of Des Moines, held on the above date, among other proceedings the above was adopted.

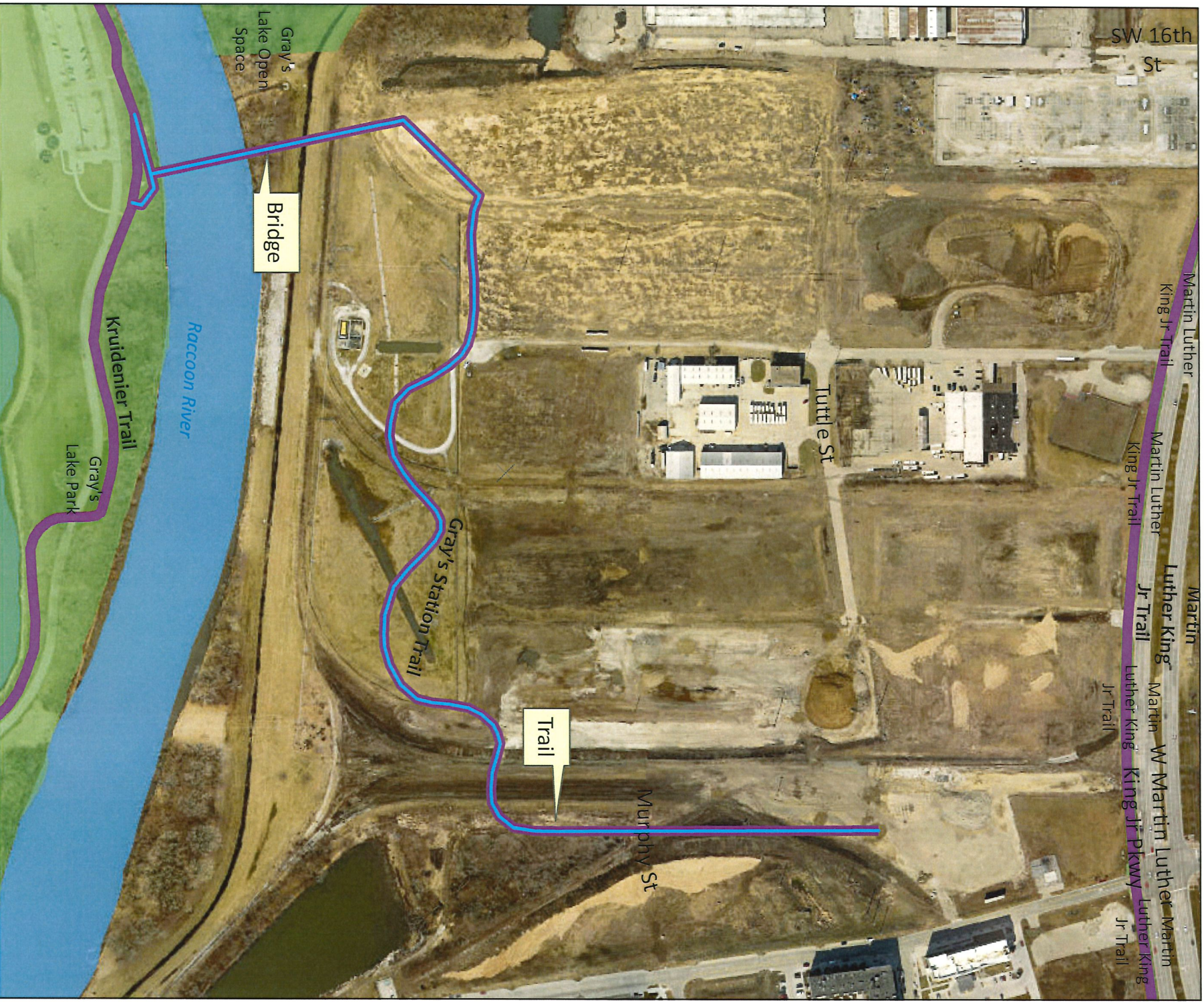
IN WITNESS WHEREOF, I have hereunto set my hand and affixed my seal the day and year first above written.

MOTION CARRIED APPROVED

_____ Mayor

_____ City Clerk

Gray's Station - Multi-Use Recreational Trail and Bridge



*Bridge and trail location are approximate